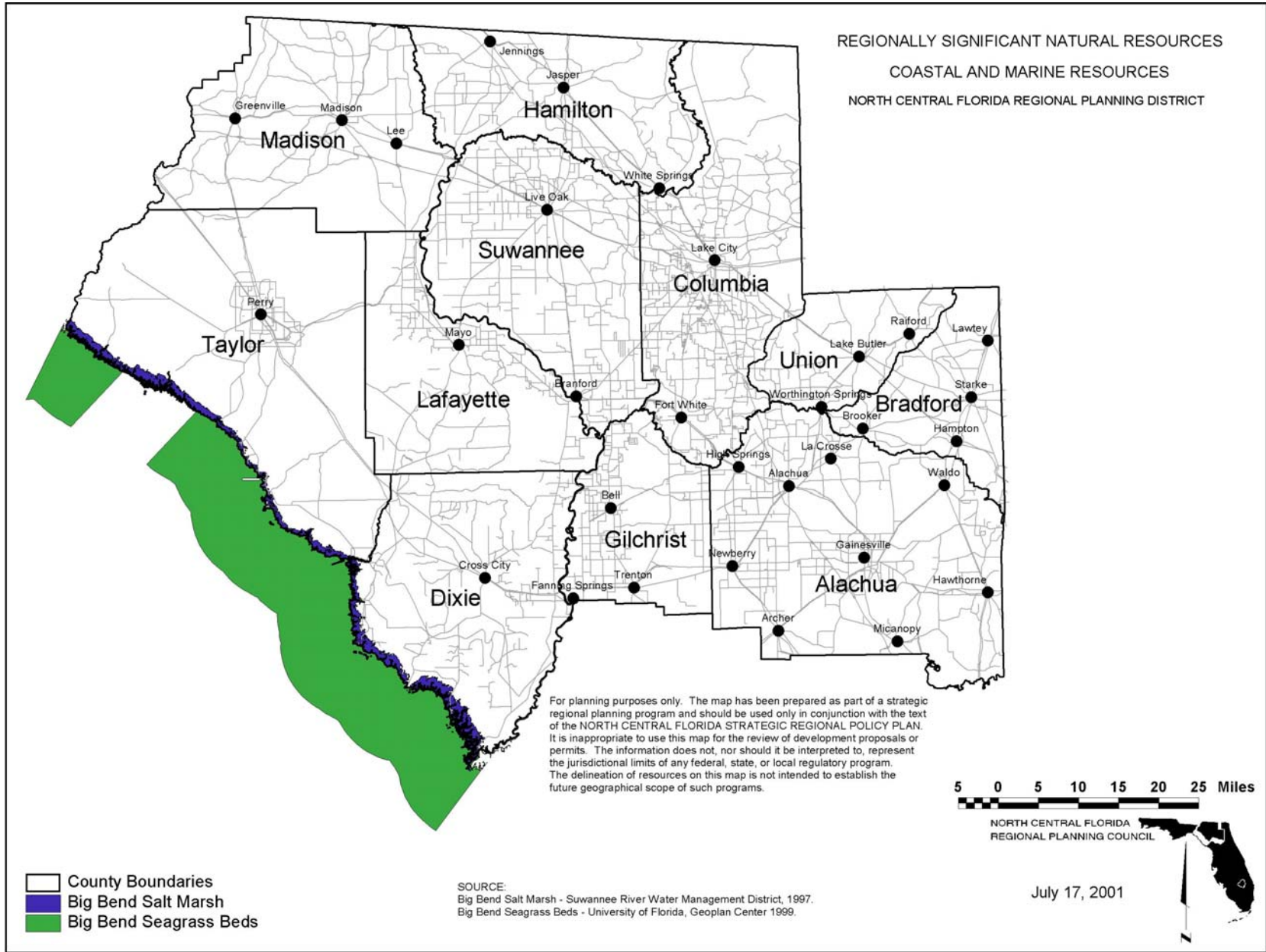
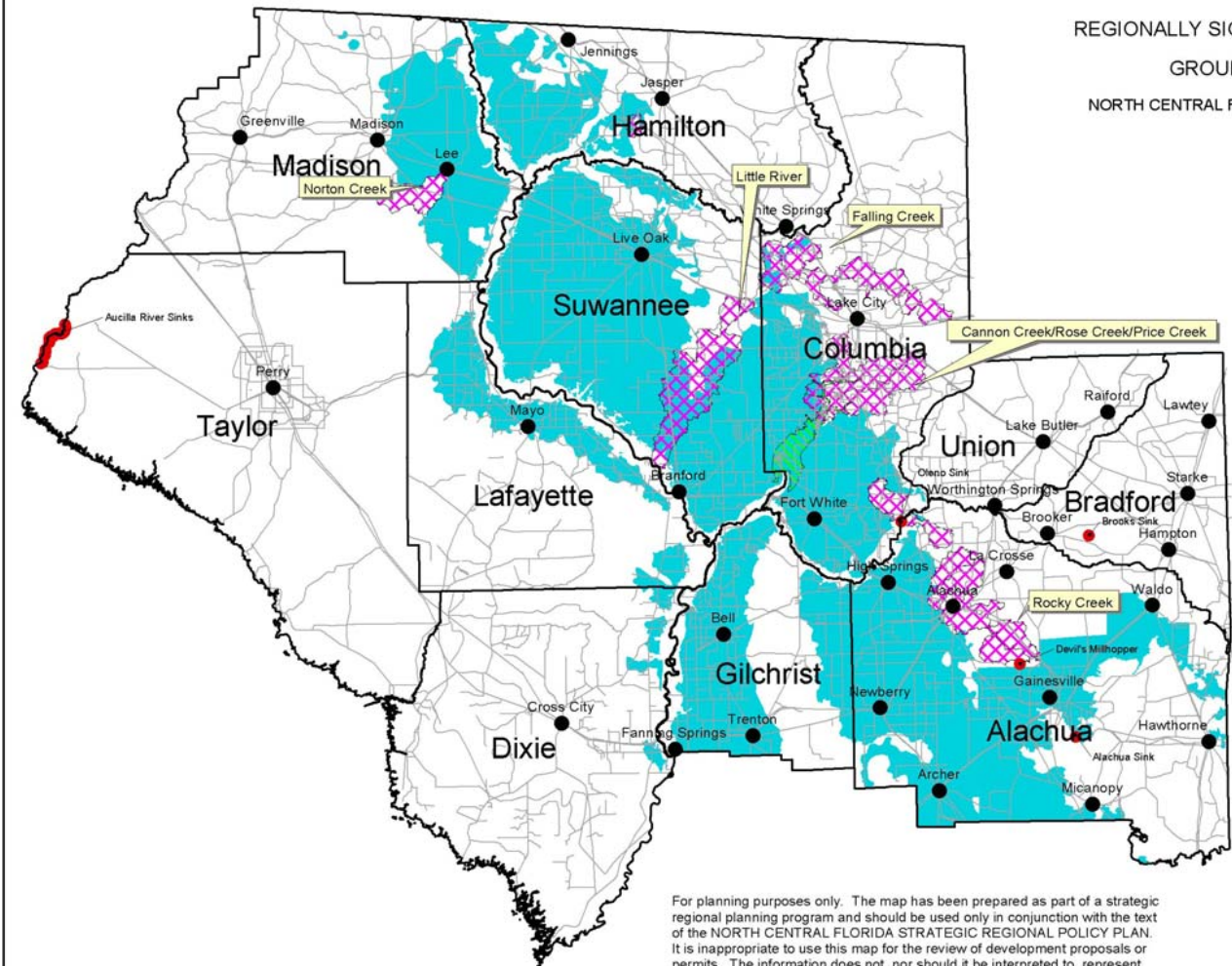


REGIONALLY SIGNIFICANT NATURAL RESOURCES
 COASTAL AND MARINE RESOURCES
 NORTH CENTRAL FLORIDA REGIONAL PLANNING DISTRICT



REGIONALLY SIGNIFICANT NATURAL RESOURCES
GROUND WATER RESOURCES
NORTH CENTRAL FLORIDA REGIONAL PLANNING DISTRICT



For planning purposes only. The map has been prepared as part of a strategic regional planning program and should be used only in conjunction with the text of the NORTH CENTRAL FLORIDA STRATEGIC REGIONAL POLICY PLAN. It is inappropriate to use this map for the review of development proposals or permits. The information does not, nor should it be interpreted to, represent the jurisdictional limits of any federal, state, or local regulatory program. The delineation of resources on this map is not intended to establish the future geographical scope of such programs.



NORTH CENTRAL FLORIDA
REGIONAL PLANNING COUNCIL

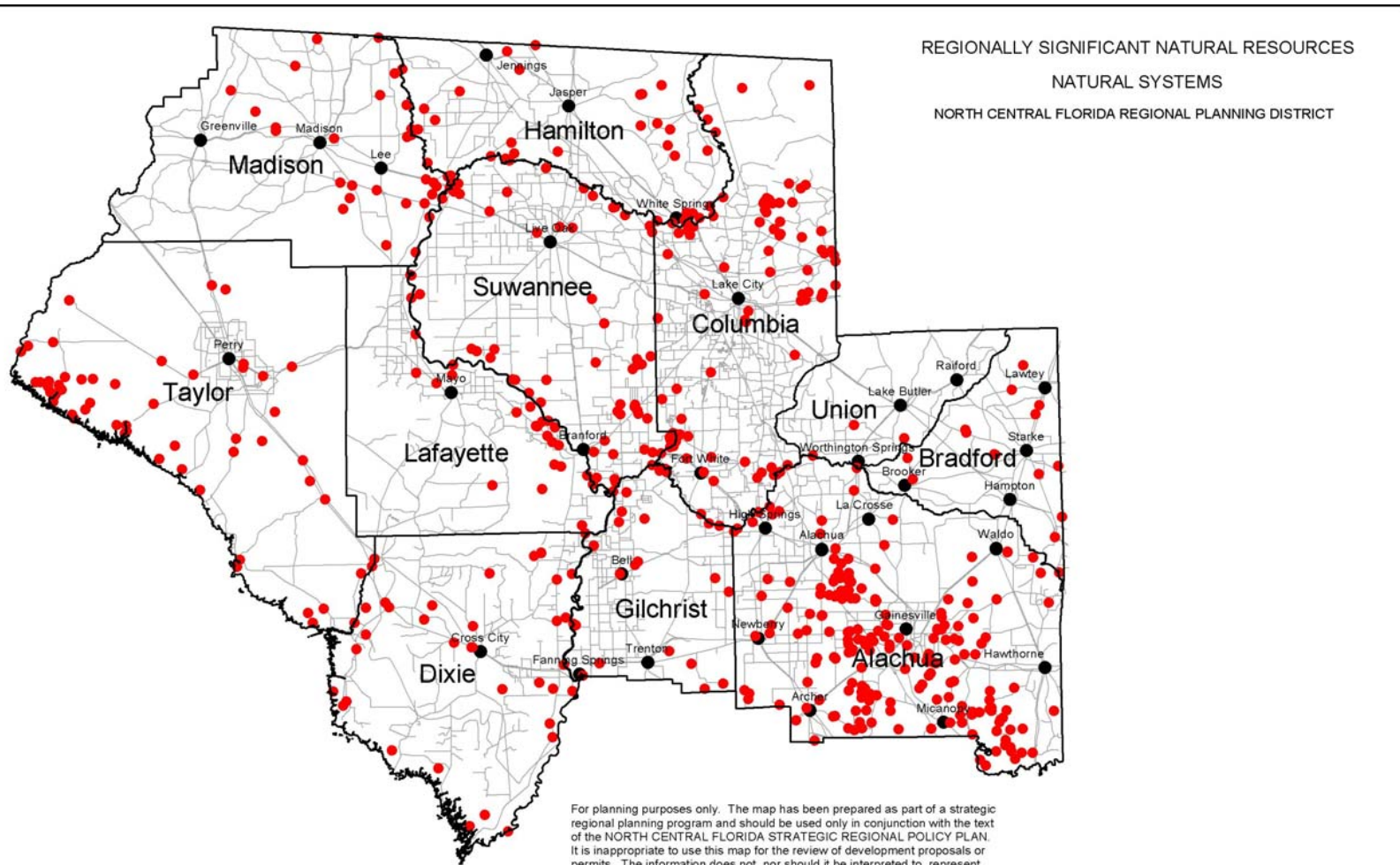
- County Boundaries
- Sinks
- Ichetucknee Trace
- Stream-to-Sink Watershed
- Areas Of High Recharge Potential To The Florida Aquifer

SOURCE:
Areas of High Recharge Potential to the Florida Aquifer - St. Johns River Water Management District, 1996 & Suwannee River Water Management District, 1997.
Ichetucknee Trace - Columbia County Comprehensive Plan, 1999.
Sinks - U.S. Geological Survey topographic maps, 1981.
Stream-to-Sink Watersheds - Suwannee River Water Management District, 1997.

July 17, 2001



REGIONALLY SIGNIFICANT NATURAL RESOURCES
 NATURAL SYSTEMS
 NORTH CENTRAL FLORIDA REGIONAL PLANNING DISTRICT



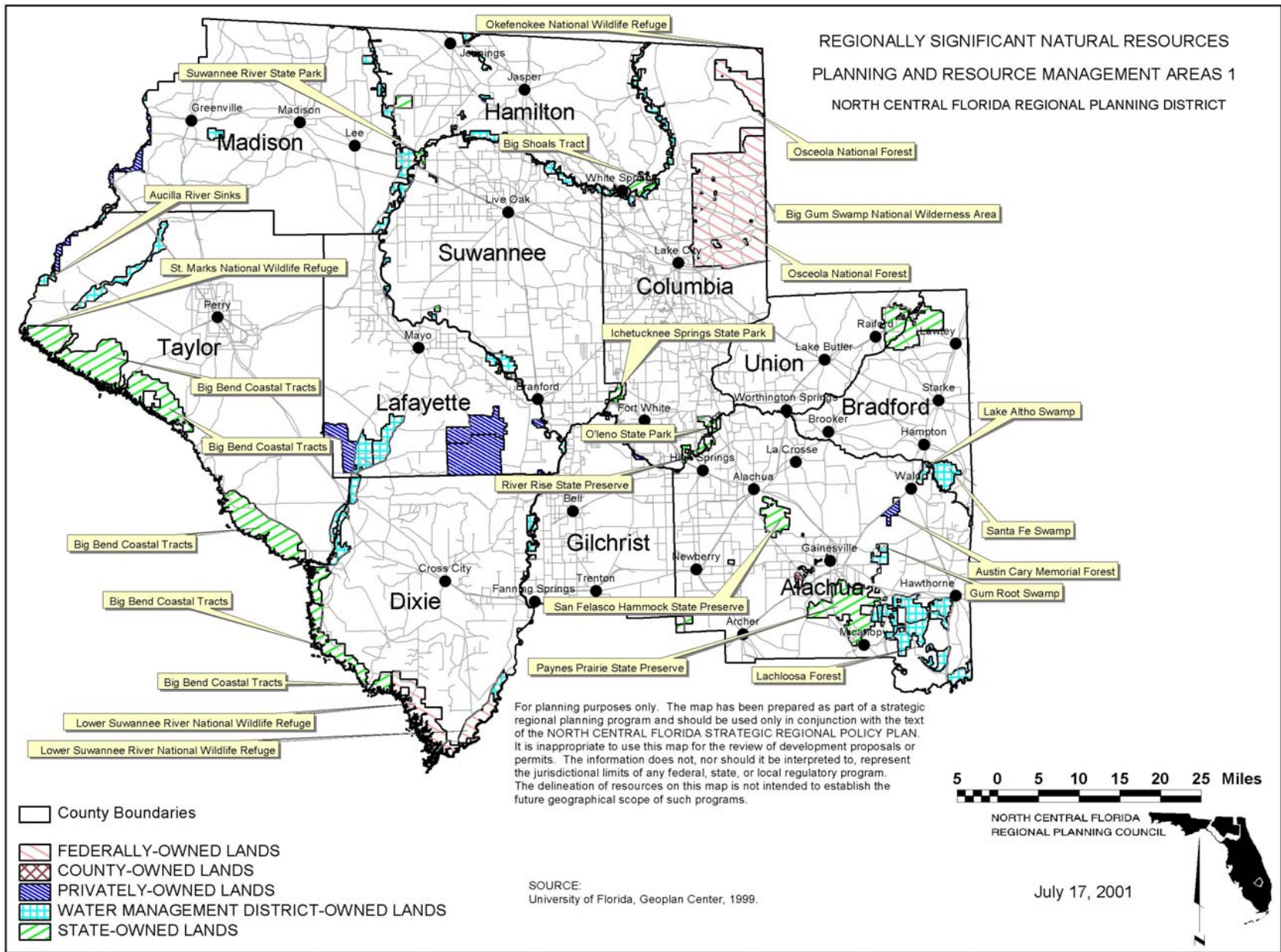
For planning purposes only. The map has been prepared as part of a strategic regional planning program and should be used only in conjunction with the text of the NORTH CENTRAL FLORIDA STRATEGIC REGIONAL POLICY PLAN. It is inappropriate to use this map for the review of development proposals or permits. The information does not, nor should it be interpreted to, represent the jurisdictional limits of any federal, state, or local regulatory program. The delineation of resources on this map is not intended to establish the future geographical scope of such programs.

□ County Boundaries
 ● Listed Species

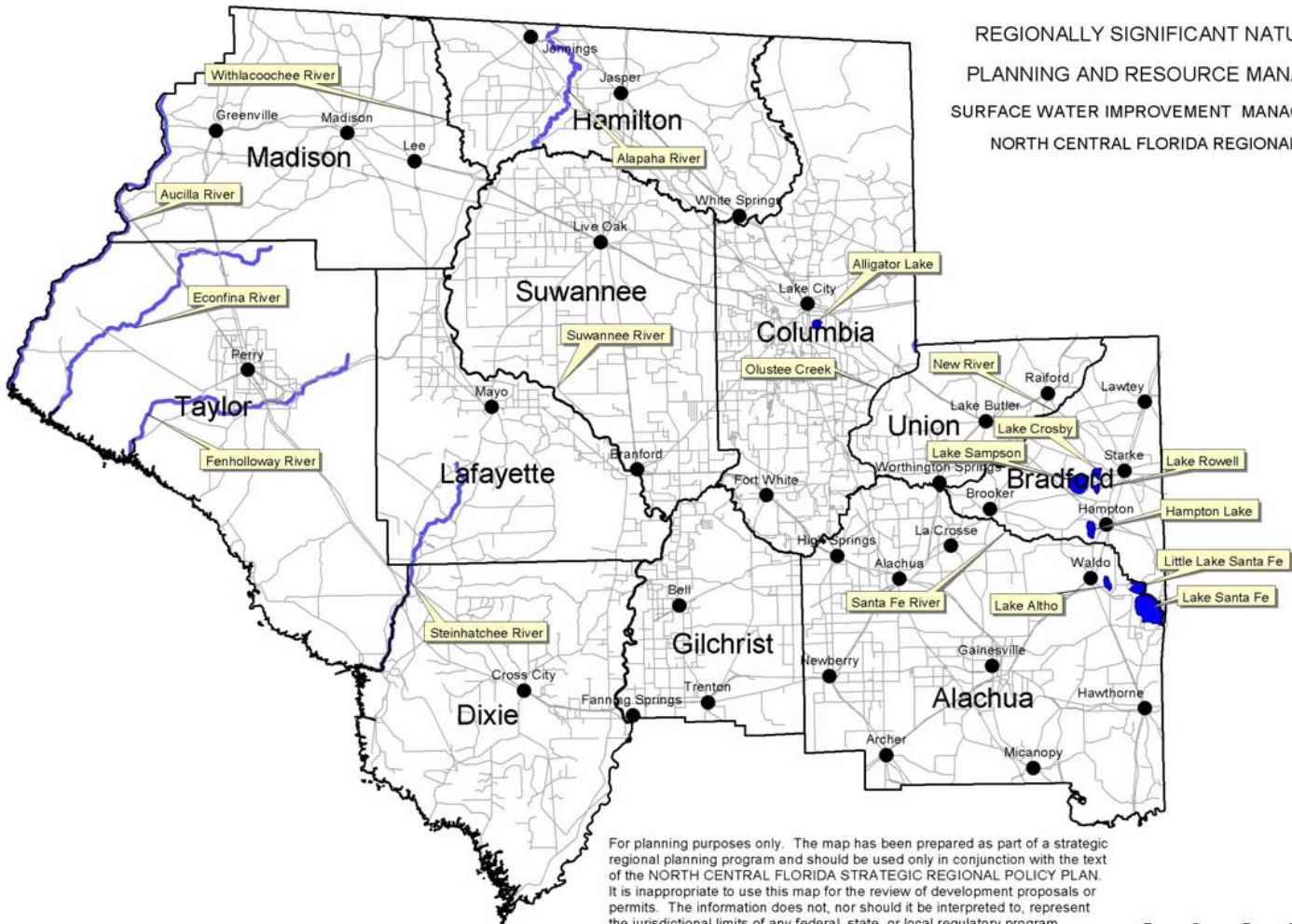
SOURCE:
 Florida Natural Areas Inventory Element Occurrence Database, 1999.



July 17, 2001



REGIONALLY SIGNIFICANT NATURAL RESOURCES
 PLANNING AND RESOURCE MANAGEMENT AREAS 2
 SURFACE WATER IMPROVEMENT MANAGEMENT WATERBODIES
 NORTH CENTRAL FLORIDA REGIONAL PLANNING DISTRICT



For planning purposes only. The map has been prepared as part of a strategic regional planning program and should be used only in conjunction with the text of the NORTH CENTRAL FLORIDA STRATEGIC REGIONAL POLICY PLAN. It is inappropriate to use this map for the review of development proposals or permits. The information does not, nor should it be interpreted to, represent the jurisdictional limits of any federal, state, or local regulatory program. The delineation of resources on this map is not intended to establish the future geographical scope of such programs.



NORTH CENTRAL FLORIDA
 REGIONAL PLANNING COUNCIL

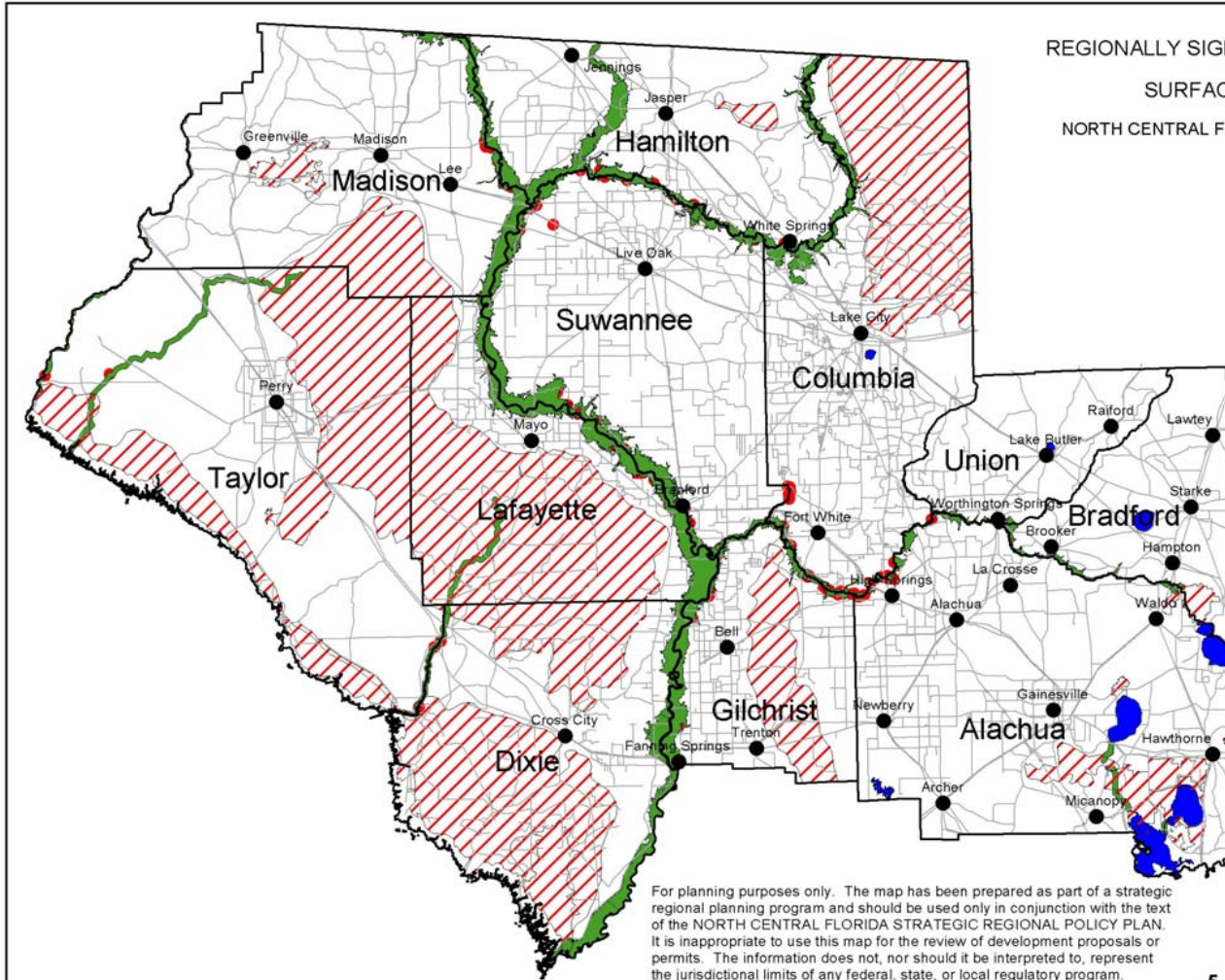


□ County Boundaries

SOURCE:
 SWIM Waterbodies - St. Johns and Suwannee River Water Management Districts, 2001.

July 17, 2001

REGIONALLY SIGNIFICANT NATURAL RESOURCES
 SURFACE WATER RESOURCES
 NORTH CENTRAL FLORIDA REGIONAL PLANNING DISTRICT



For planning purposes only. The map has been prepared as part of a strategic regional planning program and should be used only in conjunction with the text of the NORTH CENTRAL FLORIDA STRATEGIC REGIONAL POLICY PLAN. It is inappropriate to use this map for the review of development proposals or permits. The information does not, nor should it be interpreted to, represent the jurisdictional limits of any federal, state, or local regulatory program. The delineation of resources on this map is not intended to establish the future geographical scope of such programs.



NORTH CENTRAL FLORIDA
 REGIONAL PLANNING COUNCIL

July 17, 2001

- County Boundaries
- Fresh Water Wetlands
- Lakes
- River Corridors
- Springs

SOURCE:
 Fresh Water Wetlands - U.S. Fish and Wildlife Service National Wetlands Reconnaissance Survey, 1992.
 Lakes - Florida Department of Transportation, COUNTY GENERAL HIGHWAY MAP SERIES, 1989.
 River Corridors - Suwannee River Water Management District, 2001.
 Springs - State of Florida, Bureau of Geology, SPRINGS OF FLORIDA, 1977, and Suwannee River Water Management District, 1998.

