

List of Priority Projects

Fiscal Years 2014-15 to 2018-19

June 3, 2013

Metropolitan Transportation
Planning Organization
for the
Gainesville Urbanized Area



List of Priority Projects

Fiscal Years 2014-15 to 2018-19

ENDORSEMENT

This List of Priority Projects has been developed
consistent with federal and state requirements and
approved on June 3, 2013 by the
Metropolitan Transportation Planning Organization
for the Gainesville Urbanized Area
2009 NW 67th Place
Gainesville, FL 32653-1603

Randy Wells, Chair

The preparation of this report has been financed in part through grants from the Federal Highway Administration and Federal Transit Administration, United States Department of Transportation, under The State Planning and Research Program, Section 505 [or Metropolitan Planning Program, Section 104(f)] of Title 23, United States Code. The contents of this report do not necessarily reflect the official views or policy of the United States Department of Transportation.

Approved by the

**Metropolitan Transportation Planning Organization
for the Gainesville Urbanized Area**

2009 NW 67th Place
Gainesville, Florida 32653
www.ncfrpc.org/mtpo
352.955.2200

With Assistance from:
North Central Florida Regional Planning Council
2009 NW 67th Place
Gainesville, FL 32653
www.ncfrpc.org

June 3, 2013

Table of Contents

Chapter I: Introduction	3
A. Purpose of this Report	3
B. Methodology Used for Setting Priorities.....	3
C. Development.....	5
D. Transportation System Modifications Selected From the Gainesville Metropolitan Area 2035 Transportation Plan - The Livable Community Reinvestment Plan.....	5
E. Relationship to the Management Systems	5
F. Metropolitan Transportation Planning Organization for the Gainesville Urbanized Area Urban Design Policies.....	5
G. Public Involvement and Service Equity.....	5
H. Freight Shippers	6
I. Public Transportation Users.....	6
J. Safety and Security in the Transportation System Planning Process	6
Chapter II: Project Priorities	11
A. Bicycle/Pedestrian Priorities.....	13
B. Capacity/Multimodal Priorities.....	17
C. Intelligent Transportation System Priorities	21
D. Landscaping Priorities	25
E. Project, Development and Environment Study Priorities	27
F. Public Transportation Priorities	33
G. Right-of-Way Priorities	37
H. Safety Priorities	41
I. Strategic Intermodal System Priorities	45
J. Surface Transportation Program Fund Priorities.....	47
K. Traffic Operations Priorities	49
L. Transit Corridor Development Priorities	53
M. Transportation Disadvantaged Priorities	54
N. Transportation Regional Incentive Program Priorities	61

Tables

Table 1A Bicycle/Pedestrian Priorities - Transportation Alternatives Project Fund Fiscal Years 2014-15 to 2018-19	13
Table 1B Bicycle/Pedestrian Priorities - Alachua County - Maintained Facilities	14
Table 1C Bicycle/Pedestrian Priorities - City of Gainesville-Maintained Facilities	15
Table 2A Capacity/Multimodal Priorities - State Highway System	17
Table 2B Capacity/Multimodal Priorities - Alachua County-Maintained Facilities	18
Table 2C Capacity/Multimodal Priorities - City of Gainesville-Maintained Facilities	19
Table 3 Intelligent Transportation System Priorities.....	21
Table 4 Landscaping Priorities - State Highway System Only*	25
Table 5A Project, Development and Environment Study Priorities State Highway System.....	27
Table 5B Project, Development and Environment Study Priorities Alachua County - Maintained Facilities	28
Table 5C Project, Development and Environment Study Priorities City of Gainesville - Maintained Facilities	30
Table 6 Public Transportation Priorities.....	33
Table 7A Right-of-Way Priorities - State Highway System	37
Table 7B Right-of-Way Priorities - Alachua County-Maintained Facilities.....	38
Table 7C Right-of-Way Priorities - City of Gainesville-Maintained Facilities	39
Table 8 Safety Priorities.....	41
Table 9 Strategic Intermodal System Priorities	45
Table 10 Surface Transportation Program Fund Priorities.....	47
Table 11A Traffic Operations Priorities - State Highway System Only.....	49
Table 11B Traffic Operations Priorities - Local Facilities	51
Table 12 Transit Corridor Development Priorities.....	53
Table 13 Transportation Disadvantaged Priorities - Transportation Disadvantaged Trust Fund	54
Table 14 Transportation Disadvantaged Priorities - Federal Transit Administration Section 5310 - Capital Funding/Equipment Program	55
Table 15 Transportation Disadvantaged Priorities - Federal Transit Administration Section 5311 - Nonurbanized Area Formula Program	56
Table 16 Transportation Disadvantaged Priorities - Federal Transit Administration Section 5316 - Job Access And Reverse Commute Program	57
Table 17 Transportation Disadvantaged Priorities - Federal Transit Administration Section 5317 - New Freedom Program	58
Table 18 Transportation Regional Incentive Program Priorities.....	61
Table B-1 Roads Operating at an Unacceptable Highway Level of Service Gainesville Metropolitan Area, 2011	B-3
[does not include reserve trips].....	B-3
Table C-1 Year 2035 Bicycle/Pedestrian Cost Feasible Plan	C-3
Table C-2 Year 2035 Roadway Cost Feasible Plan	C-4
Table C-3 Year 2035 Transit Cost Feasible Plan.....	C-7
Table C-4 Year 2035 Cost Feasible Plan Intelligent Transportation System Appendix	C-8
Table C-5 Year 2035 Long Range Transportation Plan Existing Plus Committed Capacity Projects Appendix	C-11
Table D-1 Fiscal Years 2014-15 to 2018-19 Public Transportation Priorities Supplemental Information Priority 4 and 5 Projects	D-5
Table G-1 Alachua County and City of Gainesville Nonprioritized Surface Transportation Program Fund-Eligible Projects	G-3

Illustrations

Illustration I Metropolitan Transportation Planning Organization for the Gainesville Urbanized Area Calendar	4
Illustration II Transportation Alternative Project Priorities	12
Illustration III Capacity/Multimodal Priorities State Highway System.....	16
Illustration IV Intelligent Transportation System Priorities.....	20
Illustration V Landscaping Priorities.....	24
Illustration VI Project, Development and Environment (PD&E) Priorities	26
Illustration VII Public Transportation Priorities	32
Illustration VIII Right-of-Way Priorities State Highway System	36
Illustration IX Safety Priorities.....	40
Illustration X Strategic Intermodal System Priorities	44
Illustration XI Surface Transportation Program Fund Priorities	46
Illustration XII Traffic Operations Priorities Local Facilities	48
Illustration XIII Transit Corridor Development Priorities	52
Illustration XIV Transportation Regional Incentive Program Priorities.....	60
Illustration B-1 Roads Operating at an Unacceptable Highway Level of Service	B-4
Illustration C-1 Year 2035 Long Range Transportation Plan Cost Feasible Priority Ranking of Projects	C-13

Appendices

Appendix A: Transportation Plans and Programs - Eight Metropolitan Planning Factors to be Considered	A-3
Appendix B: Roads Operating at an Unacceptable Highway Level of Service	B-3
Appendix C: 2035 Long Range Transportation Plan - Livable Community Reinvestment Plan.....	C-3
Appendix D: Regional Transit System Supplemental Information.....	D-3
Appendix E: Safety Projects Supplemental Material	E-3
Appendix F: Federal Funds Obligation Project List, Fiscal Year 2011-12	F-3
Appendix G: Supplemental Surface Transportation Program Fund-Eligible Projects.....	G-3

THIS PAGE LEFT BLANK INTENTIONALLY

Chapter I

Introduction

THIS PAGE LEFT BLANK INTENTIONALLY

Chapter I: Introduction

Each spring, the Metropolitan Transportation Planning Organization for the Gainesville Urbanized Area approves a five-year program for transportation system modification projects to be funded with federal, state and local funds. This five-year program is referred to as the Transportation Improvement Program.

As shown in Illustration I, the Transportation Improvement Program has the following three phases.

- ☐ Spring - The Metropolitan Transportation Organization for the Gainesville Urbanized Area approves priority lists for projects it wants Florida Department of Transportation to fund;
- ☐ Late Fall - The Florida Department of Transportation reports to the Metropolitan Transportation Planning Organization for the Gainesville Urbanized Area what projects it proposes to fund; and
- ☐ Spring - The Metropolitan Transportation Planning Organization for the Gainesville Urbanized Area decides which federally-funded projects to approve.

A. Purpose of this Report

This report develops a list of needed, but unfunded, transportation projects. The projects listed later in this report are determined by the Metropolitan Transportation Planning Organization for the Gainesville Urbanized Area to be necessary to effectively implement the adopted 2035 Long Range Transportation Plan, the *Livable Community Reinvestment Plan*. Projects selected for funding will be incorporated into the Metropolitan Transportation Planning Organization for the Gainesville Urbanized Area Fiscal Years 2013-14 to 2017-18 Transportation Improvement Program.

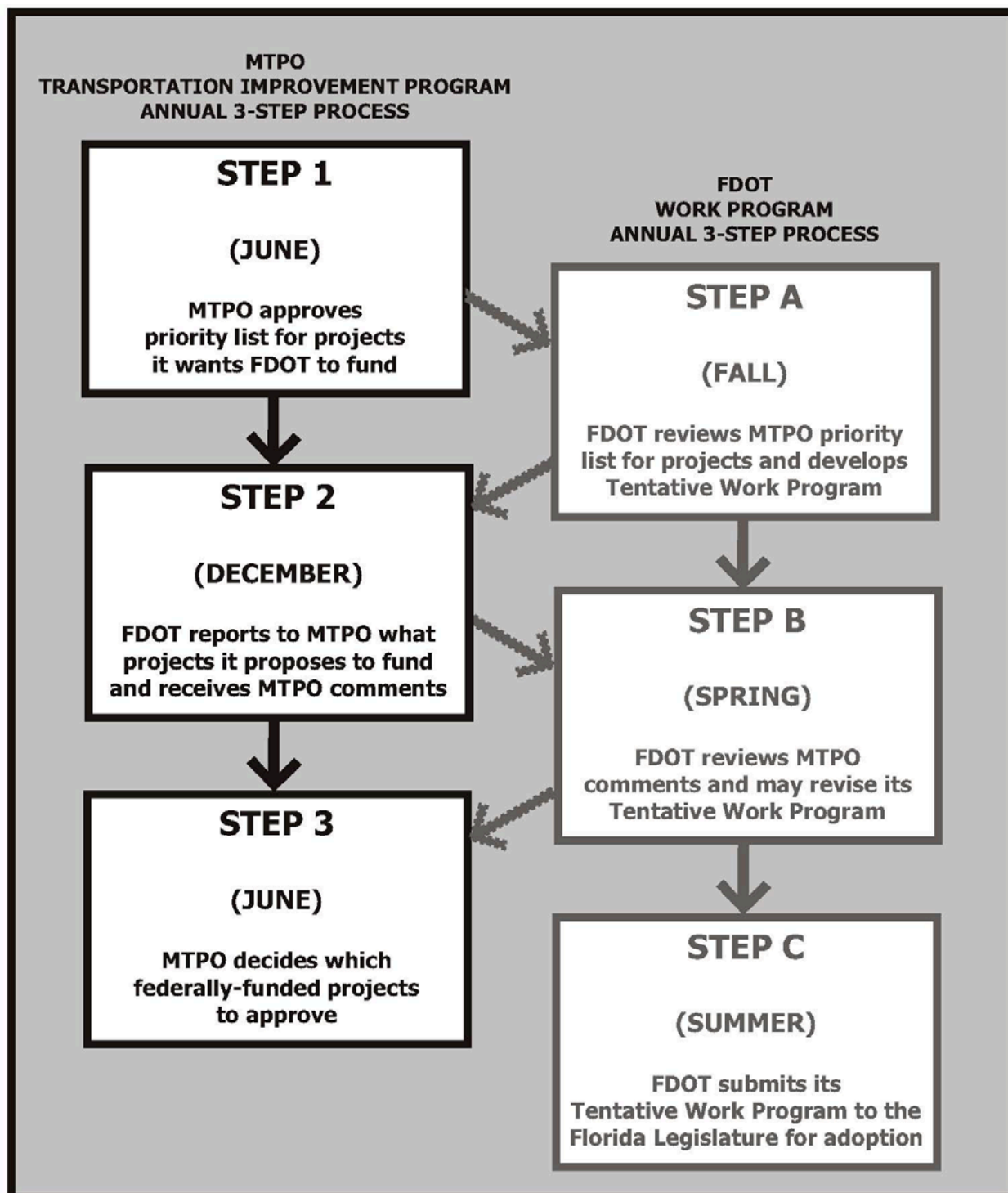
Development of the Long Range Transportation Plan, List of Priority Projects and Transportation Improvement Program address the transportation planning process requirements in the Moving Ahead for Progress in the 21st Century Act. In accordance with 23 United States Code 134 (c)(3) and 49 United States Code 5303 (a)(3), this document is developed based on a continuing, comprehensive, and cooperative process.

B. Methodology Used for Setting Priorities

The following methodology has been used to establish the priorities contained in this report.

- ☐ March - Draft report distributed to the Metropolitan Transportation Planning Organization for the Gainesville Urbanized Area advisory committees that identifies transportation priorities submitted last year and, of those, which ones were funded;
- ☐ May - The Metropolitan Transportation Planning Organization for the Gainesville Urbanized Area advisory committees develop recommended transportation priorities for the coming year; and
- ☐ June - The Metropolitan Transportation Planning Organization for the Gainesville Urbanized Area approves transportation priorities for the coming year and submits a List of Priority Projects to the Florida Department of Transportation.

Illustration I
Metropolitan Transportation Planning Organization
for the Gainesville Urbanized Area
Calendar



FDOT= Florida Department of Transportation
MTPO= Metropolitan Transportation Planning Organization for the Gainesville Urbanized Area

t:\mike\tp\priorities\lop1217\calendar.cdr

C. Development

Section 134(f) of Title 23, United States Code states that, in developing transportation programs, metropolitan planning organizations shall consider the eight factors contained in Appendix A. These factors have been considered in the development of the project priorities contained in this report.

D. Transportation System Modifications Selected From the Gainesville Metropolitan Area 2035 Transportation Plan - The Livable Community Reinvestment Plan

The transportation system modifications that have been identified as priorities from the adopted 2035 Long Range Transportation Plan, the *Livable Community Reinvestment Plan* are listed in the Public Transportation Priorities, Surface Transportation Program Fund Priorities and Traffic Operations Priorities project tables.

E. Relationship to the Management Systems

The transportation priorities contained in this report are developed from available information from the management systems required for the Gainesville Metropolitan Area as in accordance with the Moving Ahead for Progress in the 21st Century Act. The congestion management system for the Gainesville Metropolitan Area was fully operational by October 1, 1997.

F. Metropolitan Transportation Planning Organization for the Gainesville Urbanized Area Urban Design Policies

The Metropolitan Transportation Planning Organization for the Gainesville Urbanized Area has, over the years, adopted various urban design and streetscape policies. These policies have been consolidated into a document entitled Metropolitan Transportation Planning Organization for the Gainesville Urbanized Area Urban Design Policy Manual. Therefore, unless otherwise stated within this List of Priority Projects document, all priority project recommendations shall be in conformance with the Metropolitan Transportation Planning Organization for the Gainesville Urbanized Area Urban Design Policy Manual document.

G. Public Involvement and Service Equity

Citizen involvement in the Transportation Improvement Program three-step process is promoted through the Metropolitan Transportation Planning Organization for the Gainesville Urbanized Area Public Involvement Process which was developed and adopted pursuant to 23 Code of Federal Regulations 450.316(b)(1) requirements. The Metropolitan Transportation Planning Organization for the Gainesville Urbanized Area Public Involvement Plan describes a process to involve the public, including private transportation operators, in the transportation planning process, including the annual development of the Transportation Improvement Program, in accordance with Section 339.175(7), Florida Statutes. In addition, the Metropolitan Transportation Planning Organization for the Gainesville Urbanized Area Public

Involvement Plan includes strategies to address service equity, including outreach to socio-economic communities that have traditionally been underrepresented in the transportation planning process. The Metropolitan Transportation Planning Organization for the Gainesville Urbanized Area sponsors workshops and charrettes, as necessary, regarding projects in the Transportation Improvement Program.

The Metropolitan Transportation Planning Organization for the Gainesville Urbanized Area provides local news media notification of meetings when the List of Priority Projects is scheduled for review and approval by the Metropolitan Transportation Planning Organization for the Gainesville Urbanized Area and its advisory committees, thereby providing citizens an opportunity to participate in the development of the List of Priority Projects. To inform the general public and other interested persons who may want to review and comment on the List of Priority Projects, public notice is also provided through the Clerk of the City of Gainesville, who places meeting notices on City Community Calendar and in the local newspaper listing of public meetings of the week.

H. Freight Shippers

The Metropolitan Transportation Planning Organization for the Gainesville Urbanized Area maintains a database of freight shippers that serve and/or are based in the Gainesville Metropolitan Area. Correspondence is sent to the freight shippers inviting them to participate in the development of the Transportation Improvement Program. Freight shippers are notified of the Metropolitan Transportation Planning Organization for the Gainesville Urbanized Area meeting dates when the List of Priority Projects and the Transportation Improvement Program documents are considered by the Metropolitan Transportation Planning Organization for the Gainesville Urbanized Area.

I. Public Transportation Users

The Metropolitan Transportation Planning Organization for the Gainesville Urbanized Area coordinates with Regional Transit System staff for public involvement in the development of the Transportation Improvement Program. The Regional Transit System Advisory Board provides input for transit projects to be included in the List of Priority Projects. In addition, Regional Transit System staff conducts transit forums to gather public input. The Alachua County Transportation Disadvantaged Coordinating Board, which includes public transportation users, provides input for transportation disadvantaged projects to be included in the List of Priority Projects. Each year, the Metropolitan Transportation Planning Organization for the Gainesville Urbanized Area solicits input from the Regional Transit System and the Alachua County Transportation Disadvantaged Coordinating Board for projects to be included in the List of Priority Projects.

J. Safety and Security in the Transportation System Planning Process

The Florida Department of Transportation supports a network of Community Traffic Safety Teams. These Teams are comprised of state and local technical expertise for transportation system management and planning, public safety, including police and fire personnel, and education. In addition to a Metropolitan Transportation Planning Organization for the Gainesville Urbanized Area representative, the Alachua County Traffic Safety Team is comprised of representatives from:

Metropolitan Transportation Planning Organization for the Gainesville Urbanized Area
List of Priority Projects Fiscal Years 2014-15 to 2018-19

State of Florida	Alachua County	City of Gainesville
Florida Department of Transportation	Fire Rescue	Fire Rescue
Florida Highway Patrol	School Board	Police Department
University of Florida T ² Center	Sheriff's Office	Public Works Department
UF Facilities Planning & Construction	Public Works Department	-

UF = University of Florida

T² = Technology Transfer

The Metropolitan Transportation Planning Organization for the Gainesville Urbanized Area receives Alachua County Traffic Safety Team recommendations for safety-funded projects in the List of Priority Projects. Currently, the focus of transportation system security is on airport facilities.

THIS PAGE LEFT BLANK INTENTIONALLY

Chapter II

Project Priorities

THIS PAGE LEFT BLANK INTENTIONALLY

Chapter II: Project Priorities

This chapter includes the project priorities for several funding categories which are described on maps and tables. These project priority categories include:

- Bicycle/Pedestrian Enhancement Priorities;
- Capacity/Multimodal Priorities;
- Intelligent Transportation System Priorities;
- Landscaping Priorities;
- Project Development and Environment Study Priorities;
- Public Transportation Priorities;
- Right-of-Way Priorities;
- Safety Priorities;
- Strategic Intermodal System Priorities;
- Surface Transportation Program Priorities;
- Traffic Operations Priorities
- Transit Corridor Development Priorities; and
- Transportation Disadvantaged Priorities.

Illustration II Transportation Alternative Project Priorities Fiscal Years 2014-15 to 2018-19



A. Bicycle/Pedestrian Priorities

Table 1A identifies Transportation Alternatives Project-funded bicycle/pedestrian project priorities for the Fiscal Years 2014-15 to 2018-19 Transportation Improvement Program. Table 1B identifies Alachua County-maintained facility bicycle/pedestrian project priorities. Table 1C identifies City of Gainesville-maintained facility bicycle/pedestrian project priorities.

Table 1A
Bicycle/Pedestrian Priorities - Transportation Alternatives Project Fund
Fiscal Years 2014-15 to 2018-19
(within the Gainesville Metropolitan Area)

Number	Project	Location	Description
1	SW 27 Street/SW 40 Place/ SW 25 Terrace	FM: SW 35 Terrace TO: Williston Road	Construct ADA-compliant multi-use path
2	E University Avenue [SR 26]	FM: E 9 Street TO: Waldo Road [SR 24]	Pedestrian refuge islands
3	Norton Elementary Trail	FM: NW 39 Avenue TO NW 45 Avenue	Construct bicycle/pedestrian trail
4	NE 15 Street	FM: NE 12 Avenue TO: NE 16 Avenue	Construct ADA-compliant sidewalk
5	NW 2 Street	FM: NW 10 Avenue TO: NW 14 Avenue	Construct ADA-compliant sidewalk
6	Bus Stop Upgrades	AT: RTS Systemwide	Construct bus stops and sidewalk connections
7	SW 40 Boulevard/ SW 47 Avenue	FM: Archer Road TO SW 34 Street	Construct bicycle/pedestrian trail
8	E 10 Street	FM: Depot Avenue Trail TO: NE 3 Avenue	Construct bicycle/pedestrian trail; add refuge island at NE 3 Avenue/ Waldo Road intersection
9 <i>Partially Funded</i>	<i>SW 43 Street</i>	<i>FM: SW 40 Boulevard TO: SW 20 Avenue</i>	<i>Construct ADA-compliant sidewalk</i>
10	NW 3 Street	FM: W University Avenue TO: NW 8 Avenue	Construct ADA-compliant sidewalk
11	SW 34 Street Grade-Separated Crossing*	AT: SW 34 Street [SR 121]	Construct bicycle/pedestrian grade-separated crossing
12	Hull Road Connector*	FM: SW 20 Avenue TO: End of Parking Area	Construct bicycle/pedestrian trail
13	Lake Kanapaha Trail	FM: Tower Road TO: Interstate 75	Construct bicycle/pedestrian trail

Note: Projects in italic text are partially funded, as shown in the Transportation Improvement Program.

*2004 Alachua Countywide Bicycle Master Plan Addendum- Archer Braid projects

ADA = Americans with Disabilities Act of 1990; E = East; FM = From; NW = Northwest
RTS = Regional Transit System; SW = Southwest; UF = University of Florida; W = West

Initial Enhancement Priorities were developed by the Bicycle/Pedestrian Advisory Board.

Table 1B
Bicycle/Pedestrian Priorities - Alachua County - Maintained Facilities
Fiscal Years 2014-15 to 2018-19
(within the Gainesville Metropolitan Area)

Number	Project	Location	Description
NA	NW 143 Street	FM: Newberry Road TO: NW 39 Avenue	Construct multi-use path
NA	NW 63 Terrace	FM: NW 18 Avenue TO: NW 19 Place	Construct multi-use path

Note: Projects in italic text are partially funded, as shown in the Transportation Improvement Program.)

FM = From; NA = Not Applicable; RTS = Regional Transit System; SR = State Road; SW = Southwest
UF = University of Florida; ADA = Americans with Disabilities Act of 1990
FDOTTWP = Florida Department of Transportation Tentative Work Program-funded project

Bicycle/Pedestrian Priorities- Alachua County-Maintained Facilities are derived from the adopted 2035 Long Range Transportation Plan, the *Livable Community Reinvestment Plan*. These projects were included in the 2035 Long Range Transportation Plan, the *Livable Community Reinvestment Plan* at the request of Alachua County.

Table 1C
Bicycle/Pedestrian Priorities - City of Gainesville-Maintained Facilities
Fiscal Years 2014-15 to 2018-19
(within the Gainesville Metropolitan Area)

Number	Project	Location	Description
<i>NA</i> <i>Partially</i> <i>Funded</i>	<i>SW 35 Place Sidewalk</i>	<i>FM: SW 34 Street</i> <i>[SR 121]</i> <i>TO: SW 23 Terrace</i>	<i>Construct ADA-compliant concrete sidewalk</i>
NA	West 6 Street Rail/Trail	FM: NW 16 Avenue TO: NW 23 Avenue	Construct Rail/Trail
NA	NW 45 Avenue	FM: NW 13 Street TO: NW 6 Street	Construct ADA-compliant multi-use path

Note: Projects in italic text are partially funded, as shown in the Transportation Improvement Program.

ADA = Americans with Disabilities Act of 1990
NA = Not Applicable
SW = Southwest

FM = From
SR = State Road

Bicycle/Pedestrian Priorities- City of Gainesville-Maintained Facilities are derived from the adopted 2035 Livable Community Reinvestment Plan, the *Livable Community Reinvestment Plan*. These projects were included in the 2035 Long Range Transportation Plan, the *Livable Community Reinvestment Plan* at the request of the City of Gainesville.

Illustration III Capacity/Multimodal Priorities State Highway System Fiscal Years 2014-15 to 2018-19



B. Capacity/Multimodal Priorities

Table 2A identifies State Highway System capacity/multimodal project priorities for the Fiscal Years 2014-15 to 2018-19 Transportation Improvement Program. Table 2B identifies Alachua County-maintained facility capacity/multimodal project priorities. Table 2C identifies City of Gainesville-maintained capacity/multimodal project priorities.

Table 2A
Capacity/Multimodal Priorities - State Highway System
Fiscal Years 2014-15 to 2018-19
(within the Gainesville Metropolitan Area)

Number	Project	Location	Description
<i>1</i> <i>Partially</i> <i>Funded</i>	<i>NW 34 Street [SR 121]</i>	<i>FM: NW 16 Avenue</i> <i>TO: US 441</i>	<i>Construction of center turnlanes along this facility</i>
2	University Avenue [SR 26]	FM: Gale Lemerand Drive TO: Waldo Road [SR 24]	Conduct Multimodal Emphasis Corridor Study
3	W 13 Street [US 441]	FM: Archer Road [SR 24] TO: NW 33 Avenue	Conduct Multimodal Emphasis Corridor Study
4	Waldo Road Multiway Boulevard	FM: E University Avenue [SR 26] TO: NE 39 Avenue [SR 222]	Redesign to support bus rapid transit, multi-use trail and corridor redevelopment study (PD&E)
5	Bus Rapid Transit (BRT) Corridor Infrastructure-partial	FM: Santa Fe Village TO: Gainesville Regional Airport	Installation of BRT infrastructure
6	Archer Road [SR 24] BRT	FM: MTPO Boundary TO: SW 45 Street	Dedicated lane(s) design, additional roadway capacity and corridor management study (PD&E)
7	Williston Road [SR 121]	FM: SW 62 Avenue TO: SW 35 Way	Additional roadway capacity and corridor management study (PD&E)

Note: Projects in italic text are partially funded, as shown in the Transportation Improvement Program.

BRT = Bus Rapid Transit; FM = From; NW = Northwest; PD&E = Project Design and Environment
SE = Southeast; SW = Southwest; TSM = Transportation System Management
MTPO = Metropolitan Transportation Planning Organization for the Gainesville Urbanized Area

Initial Capacity/Multimodal Priorities were developed by Metropolitan Transportation Planning Organization for the Gainesville Urbanized Area, based on the 2035 Long Range Transportation Plan, the *Livable Community Reinvestment Plan*, Cost Feasible Plan projects.

Table 2B
Capacity/Multimodal Priorities - Alachua County-Maintained Facilities
Fiscal Years 2014-15 to 2018-19
(within the Gainesville Metropolitan Area)

Number	Project	Location	Description
1	SW 20 Avenue	FM: SW 61 Street TO: SW 52 Street	4-laning and multi-use path
2	SW 8 Avenue - Phase 2	FM: SW 143 Street TO: SW 122 Street	2-lane roadway and multi-use path
3	NW 23 Avenue	FM: NW 98 Street TO: NW 55 Street	4-laning
4	SE 43 Street	FM: Hawthorne Road [SR 20] TO: University Avenue [SR 26]	Construction of two-way left turnlanes, multi-use path and signalization
5	SW 45 Street / SW 47 Street	FM: Archer Road [SR 24] TO: SW 30 Avenue	New roadway with travel lanes, BRT dedicated transit lanes and multi-use path
6	SW 30 Avenue	FM: SW 47 Street TO: SW 43 Street	New Interstate 75 overpass with travel lanes, BRT dedicated transit lanes and the Archer Braid Trail
7	NW 83 Street	FM: NW 39 Avenue [SR 222] TO: NW 46 Avenue	New roadway with travel lanes, BRT dedicated transit lanes and the Millhopper Greenway
8	NW 83 Street	FM: NW 23 Avenue TO: NW 39 Avenue [SR 222]	BRT dedicated transit lanes
9	Ft. Clarke Boulevard / NW 83 Street Corridor	FM: Newberry Road [SR 26] TO: NW 23 Avenue	BRT dedicated transit lanes & new multimodal-only Interstate 75 overpass
10	NW 46 Avenue	FM: NW 98 Street TO: NW 83 Street	New roadway with travel lanes, BRT dedicated transit lanes & new multi-use path and new Interstate 75 overpass

Note: Projects in italic text are partially funded, as shown in the Transportation Improvement Program.

BRT = Bus Rapid Transit; FM = From; Ft = Fort; NW = Northwest; SE = Southeast; SW = Southwest
MTPO = Metropolitan Transportation Planning Organization for the Gainesville Urbanized Area

Initial Capacity/Multimodal Priorities - Alachua County-Maintained Facilities were developed by Metropolitan Transportation Planning Organization for the Gainesville Urbanized Area, based on the 2035 Long Range Transportation Plan Cost Feasible Plan, the *Livable Community Reinvestment Plan* projects. These projects were included in the 2035 Long Range Transportation Plan Cost Feasible Plan, the *Livable Community Reinvestment Plan* at the request of Alachua County.

Table 2C
Capacity/Multimodal Priorities - City of Gainesville-Maintained Facilities
Fiscal Years 2014-15 to 2018-19
(within the Gainesville Metropolitan Area)

Number	Project	Location	Description
NA	SE 4 Street- Phase 2	FM: Williston Road [SR 331] TO: Depot Avenue	Reconstruction
NA	SW 62 Boulevard	FM: Archer Road [SR 24] TO: Newberry Road [SR 24]	Four lanes plus two additional BRT lanes in the middle
NA	Hull Road Extension	FM: SW 43 Street TO: SW 34 Street	Construct Hull Road extension with approved 100-foot right-of-way cross-section *
NA	SW 38 Terrace	FM: SW 20 Avenue TO: Hull Road	Construct 2-lane extension
NA	SW 6 Street	FM: SW 16 Avenue [SR 226] TO: W University Avenue [SR 26]	Urban cross-section with bikelanes reconstruction from SW 4 Avenue to West University Avenue and add medians, bikelanes and onstreet parking from SW 16 Avenue to SW 4 Avenue
NA	SW 40 Boulevard	FM: SW 34 Street [SR 121] TO: Archer Road [SR 24]	Construct 2-lane extension
NA	SW 47 Avenue	FM: SW 34 Street [SR 121] TO: Williston Road [SR 331]	Construct 2-lane extension

Note: Projects in italic text are partially funded, as shown in the Transportation Improvement Program.

BRT = Bus Rapid Transit; FM = From; NA = Not Applicable; SE = Southeast; SR = State Road
SW = Southwest; W = West

Initial Capacity/Multimodal Priorities- City of Gainesville-Maintained Facilities were developed by Metropolitan Transportation Planning Organization for the Gainesville Urbanized Area, based on the 2035 Long Range Transportation Plan, the *Livable Community Reinvestment Plan*, Cost Feasible Plan projects. These projects were included in the 2035 Long Range Transportation Plan, the *Livable Community Reinvestment Plan* at the request of the City of Gainesville.

* At its February 4, 2013 meeting, the Metropolitan Transportation Planning Organization for the Gainesville Urbanized Area approved a waiver for a 90-foot cross-section for the Village Point development project.

Illustration IV Intelligent Transportation System Priorities Fiscal Years 2014-15 to 2018-19



C. Intelligent Transportation System Priorities

Table 3 identifies intelligent transportation system project priorities for the Fiscal Years 2014-15 to 2018-19 Transportation Improvement Program.

Table 3
Intelligent Transportation System Priorities
Fiscal Years 2014-15 to 2018-19
(Gainesville Metropolitan Area/Countywide)

Number	Project	Location	Description
1 Partially Funded	<i>Traffic Management System- Phase V- Interstate 75</i>	<i>FM: Marion County line TO: Columbia County line</i>	<p><i>A. Add Dynamic Message Signs to alert motorists of traffic conditions and travel times.</i></p> <p><i>B. Add pan-tilt-zoom traffic surveillance cameras for active traffic management of the freeway. This allows operators at the Gainesville Traffic Management Center to alert motorists of existing conditions using Dynamic Message Signs and the 511 information hotline.</i></p> <p><i>C. Add traffic detection technology so automated alerts can be sent to the Gainesville Traffic Management Center operators when highway speeds drop below a certain threshold as well as for highway traffic studies and travel time collection.</i></p>
	Regional Transit System - Bus Priority System-	-	
2	A. Route 9- Archer Road [SR 24]	FM: SW 23 Terrace TO: SW 23 Drive	
	Route 9- Williston Road [SR 331]	FM: SW 25 Terrace TO: SW 23 Terrace	
	B. Route 20 - SW 34 Street [SR 121]	FM: SW 20 Avenue TO: Hull Road	
	C. Route 21 - SW 34 Street [SR 121]	FM: SW 20 Avenue TO: Hull Road	
	D. Route 35- Archer Road [SR 24]	FM: Center Drive TO: Lemerand Drive	
		FM: SW 23 Terrace TO: SW 16 Avenue	
	Route 35- SW 16 Avenue [SR 226]	FM: Archer Road TO: Shealy Drive	
	Route 35- SW 34 Street [SR 121]	FM: SW 35 Place TO: Williston Road	
		FM: SW 34 Street [SR 121]	
	Route 35- Williston Road [SR 331]	TO: SW 23 Terrace	Adding signal priority to heavily used bus routes for University of Florida students will make those routes more reliable, thus resulting in higher passenger capacity and fewer vehicles on the road.

Table 3 (Continued)
Intelligent Transportation System Priorities
Fiscal Years 2014-15 to 2018-19
(Gainesville Metropolitan Area/Countywide)

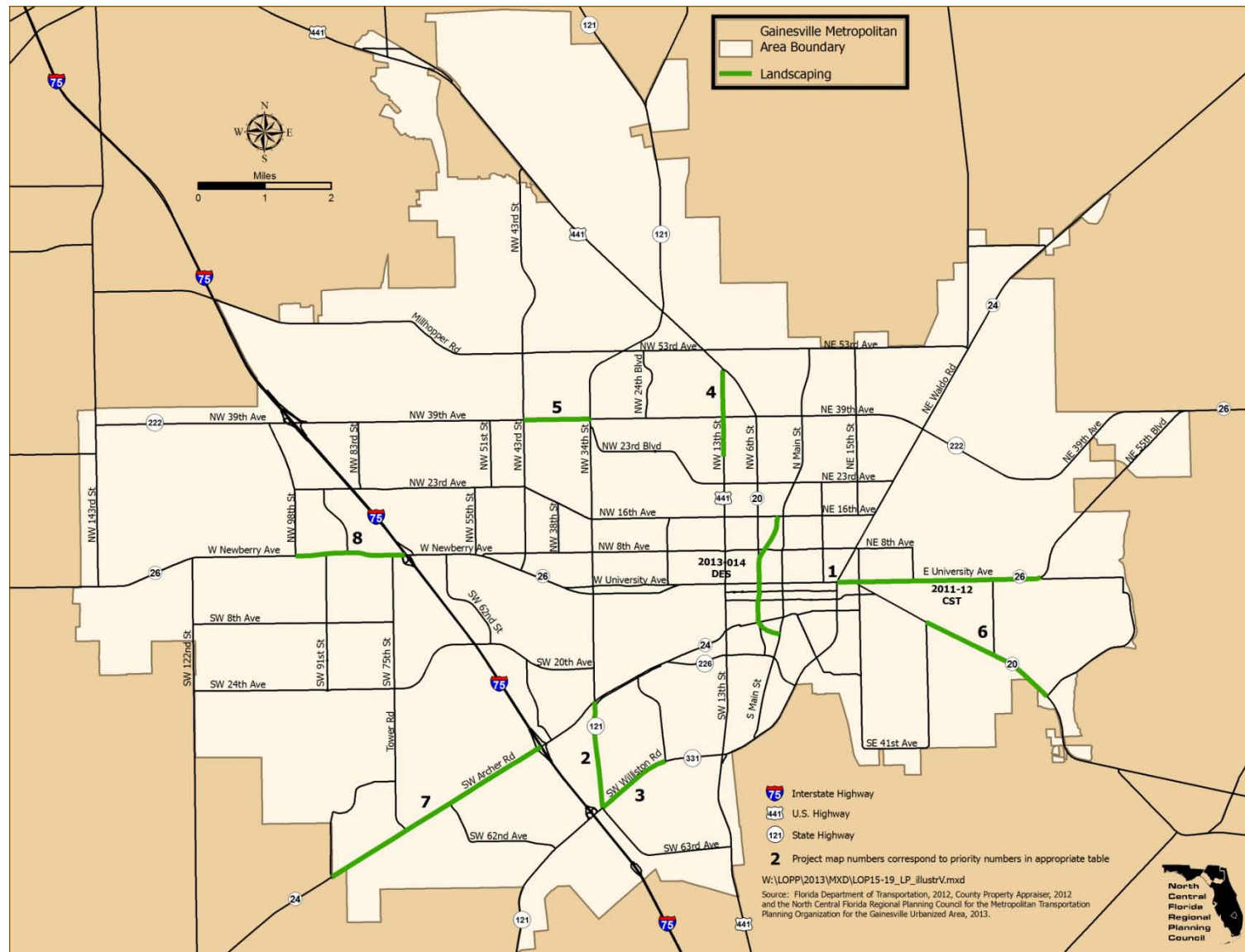
Number	Project	Location	Description
3 <i>Partially Funded</i>	<i>Dynamic Message Signs on State Highway Arterials</i>	-	<i>Dynamic message on arterials will alert drivers of existing traffic conditions, alternate routes, detour routes in the event Interstate 75 is shut down, and travel times.</i>
4	Travel Demand Management	AT: Gainesville Metropolitan Areawide	Information technologies project that addresses travel demand strategies, such as HOV lanes and other travel demand technologies.
5 <i>Partially Funded</i>	<i>Traffic Management System</i>	<i>AT: Countywide</i>	<i>Conversion to yellow flashing arrows</i>

HOV = High Occupancy Vehicles; FM = From; SE = Southeast; NW = Northwest; SW = Southwest
SR = State Road; W = West; TMC = Traffic Management Center

Initial intelligent transportation system priorities were developed by City of Gainesville Traffic Operations staff.

THIS PAGE LEFT BLANK INTENTIONALLY

Illustration V Landscaping Priorities Fiscal Years 2014-15 to 2018-19



D. Landscaping Priorities

Table 4 identifies landscaping project priorities for the Fiscal Years 2014-15 to 2018-19 Transportation Improvement Program.

Table 4
Landscaping Priorities - State Highway System Only*
Fiscal Years 2014-15 to 2018-19
(within the Gainesville Metropolitan Area)

Number	Project	Location	Description
1	University Avenue [SR 26]	AT: Waldo Road [SR 24]	Install a vegetative median on State Road 331 (Williston Road) at the State Road 26 (E. University Avenue) intersection to enhance pedestrian safety
2	SW 34 Street [SR 121]	FM: Williston Road [SR 331] TO: Archer Road [SR 24]	provide shade tree landscaping for pedestrian facilities where possible and landscaping to grassed medians where it is not possible
3	Williston Road [SR 331]	FM: SW 34 Street [SR 121] TO: SW 23 Terrace	provide shade tree landscaping for pedestrian facilities where possible
4	NW 13 Street [US 441]	FM: NW 39 Avenue [SR 222] TO: NW 6 Street [SR 20]	provide shade tree landscaping for pedestrian facilities where possible and landscaping to grassed medians where it is not possible
5	NW 39 Avenue [SR 222]	FM: NW 43 Street TO: NW 34 Street [SR 121]	provide shade tree landscaping for pedestrian facilities where possible and landscaping to grassed medians where it is not possible
6	Hawthorne Road [SR 20]	FM: SE 27 Street TO: SE 55 Boulevard	provide shade tree landscaping for pedestrian facilities where possible
7	Archer Road [SR 24]	FM: SW 91 Street TO: Interstate 75	provide shade tree landscaping for pedestrian facilities where possible and landscaping to grassed medians where it is not possible
8	Newberry Road [SR 26]	FM: NW 98 Street TO: Interstate 75	provide shade tree landscaping for pedestrian facilities where possible and landscaping to grassed medians where it is not possible

Note: Projects in italic text are partially funded, as shown in the Transportation Improvement Program.

* Projects must be constructible within the available State Road right-of-way.

FM = From; NW = Northwest; SE = Southeast; SW = Southwest; SR = State Road

Initial Landscaping Priorities were developed by Alachua County and City of Gainesville Public Works Department staff.

Illustration VI
Project, Development and Environment (PD&E) Priorities
Fiscal Years 2014-15 to 2018-19



E. Project, Development and Environment Study Priorities

Table 5A identifies State Highway System Project Development and Environment study project priorities for the Fiscal Years 2014-15 to 2018-19 Transportation Improvement Program. Table 5B identifies Alachua County-maintained facility Project Development and Environment study project priorities. Table 5C identifies City of Gainesville-maintained facility Project Development and Environment study project priorities.

Table 5A
Project, Development and Environment Study Priorities
State Highway System
Fiscal Years 2014-15 to 2018-19
(within the Gainesville Metropolitan Area)

Number	Project	Location	Description
1	Oaks Mall to Airport BRT	FM: Oaks Mall TO: Airport (via Archer Road and Downtown)	Conduct PD&E study
2	Santa Fe to Oaks Mall BRT	FM: Santa Fe College TO: Oaks Mall	Conduct PD&E study
3	University Avenue [SR 26]	FM: Gale Lemerand Drive TO: Waldo Road [SR 24]	Conduct Multimodal Emphasis Corridor Study
4	W 13 Street [US 441]	FM: Archer Road [SR 24] TO: NW 33 Avenue	Conduct Multimodal Emphasis Corridor Study
5	Waldo Road Multiway Boulevard	FM: E University Avenue [SR 26] TO: NE 39 Avenue [SR 222]	Redesign to support bus rapid transit, multi-use trail and corridor redevelopment study (PD&E)
6	Archer Road [SR 24] BRT	FM: MTPO Boundary TO: SW 45 Street	Dedicated lane(s) design, additional roadway capacity and corridor management study (PD&E)
7	Williston Road [SR 121]	FM: SW 62 Avenue TO: SW 35 Way	Additional roadway capacity and corridor management study (PD&E)

Note: Projects in italic text are partially funded, as shown in the Transportation Improvement Program.

BRT = Bus Rapid Transit; E = East; FM = From; NE = Northeast; NW = Northwest;
PD&E = Project Design and Environment Study; SR = State Road; US = United States
MTPO = Metropolitan Transportation Planning Organization for the Gainesville Urbanized Area

Initial Project Design and Environment Study Priorities were developed by Metropolitan Transportation Planning Organization for the Gainesville Urbanized Area, based on the 2035 Long Range Transportation Plan, the *Livable Community Reinvestment Plan*, Cost Feasible Plan projects.

Table 5B
Project, Development and Environment Study Priorities
Alachua County - Maintained Facilities
Fiscal Years 2014-15 to 2018-19
(within the Gainesville Metropolitan Area)

Number	Project	Location	Description
1	SW 20 Avenue Reconstruction	FM: SW 61 Street TO: SW 52 Street	Conduct PD&E study in order to construct a 4-lane divided facility and multi-use path
2	SW 8 Avenue- Phase 2	FM: SW 143 Street TO: SW 122 Street	Conduct PD&E study for 2-lane roadway and multi-use path
3	NW 23 Avenue	FM: NW 98 Street TO: NW 55 Street	Conduct PD&E study for 4-laning
4	SE 43 Street	FM: Hawthorne Road [SR 20] TO: University Avenue [SR 26]	Conduct PD&E study for construction of two-way left turnlanes, multi-use path and signalization
5	SW 45 Street / SW 47 Street	FM: Archer Road [SR 24] TO: SW 30 Avenue	Conduct PD&E study for new roadway with travel lanes, BRT dedicated transit lanes and multi-use path
6	SW 30 Avenue	FM: SW 47 Street TO: SW 43 Street	Conduct PD&E study for new Interstate 75 overpass with travel lanes, BRT dedicated transit lanes and the Archer Braid Trail
7	NW 83 Street	FM: NW 39 Avenue [SR 222] TO: NW 46 Avenue	Conduct PD&E study for new roadway with travel lanes, BRT dedicated transit lanes and the Millhopper Greenway
8	NW 83 Street	FM: NW 23 Avenue TO: NW 39 Avenue [SR 222]	Conduct PD&E study for BRT dedicated transit lanes
9	Ft. Clarke Boulevard / NW 83 Street Corridor	FM: Newberry Road [SR 26] TO: NW 23 Avenue	Conduct PD&E study for BRT dedicated transit lanes & new multimodal-only Interstate 75 overpass

Table 5B (Continued)
Project, Development and Environment Study Priorities
Alachua County - Maintained Facilities
Fiscal Years 2014-15 to 2018-19
(within the Gainesville Metropolitan Area)

Number	Project	Location	Description
11	NW 46 Avenue	FM: NW 98 Street TO: NW 83 Street	Conduct PD&E study for new roadway with travel lanes, BRT dedicated transit lanes & new multi-use path and new Interstate 75 overpass

Note: Projects in italic text are partially funded, as shown in the Transportation Improvement Program.

BRT = Bus Rapid Transit; FM = From; Ft. = Fort; NW = Northwest;

PD&E = Project Design and Environment Study; SE = Southeast; SR = State Road; SW = Southwest

Initial Project Design and Environment Study Priorities- Alachua County-Maintained Facilities were developed by Metropolitan Transportation Planning Organization for the Gainesville Urbanized Area, based on the 2035 Long Range Transportation Plan, the *Livable Community Reinvestment Plan*, Cost Feasible Plan projects. These projects were included in the 2035 Long Range Transportation Plan, the *Livable Community Reinvestment Plan* at the request of Alachua County.

Table 5C
Project, Development and Environment Study Priorities
City of Gainesville - Maintained Facilities
Fiscal Years 2014-15 to 2018-19
(within the Gainesville Metropolitan Area)

Number	Project	Location	Description
NA	Hull Road Extension	FM: SW 20 Avenue TO: SW 34 Street [SR 121]	Conduct PD&E study for MTPO-approved 100-foot cross-section *

Note: Projects in italic text are partially funded, as shown in the Transportation Improvement Program.

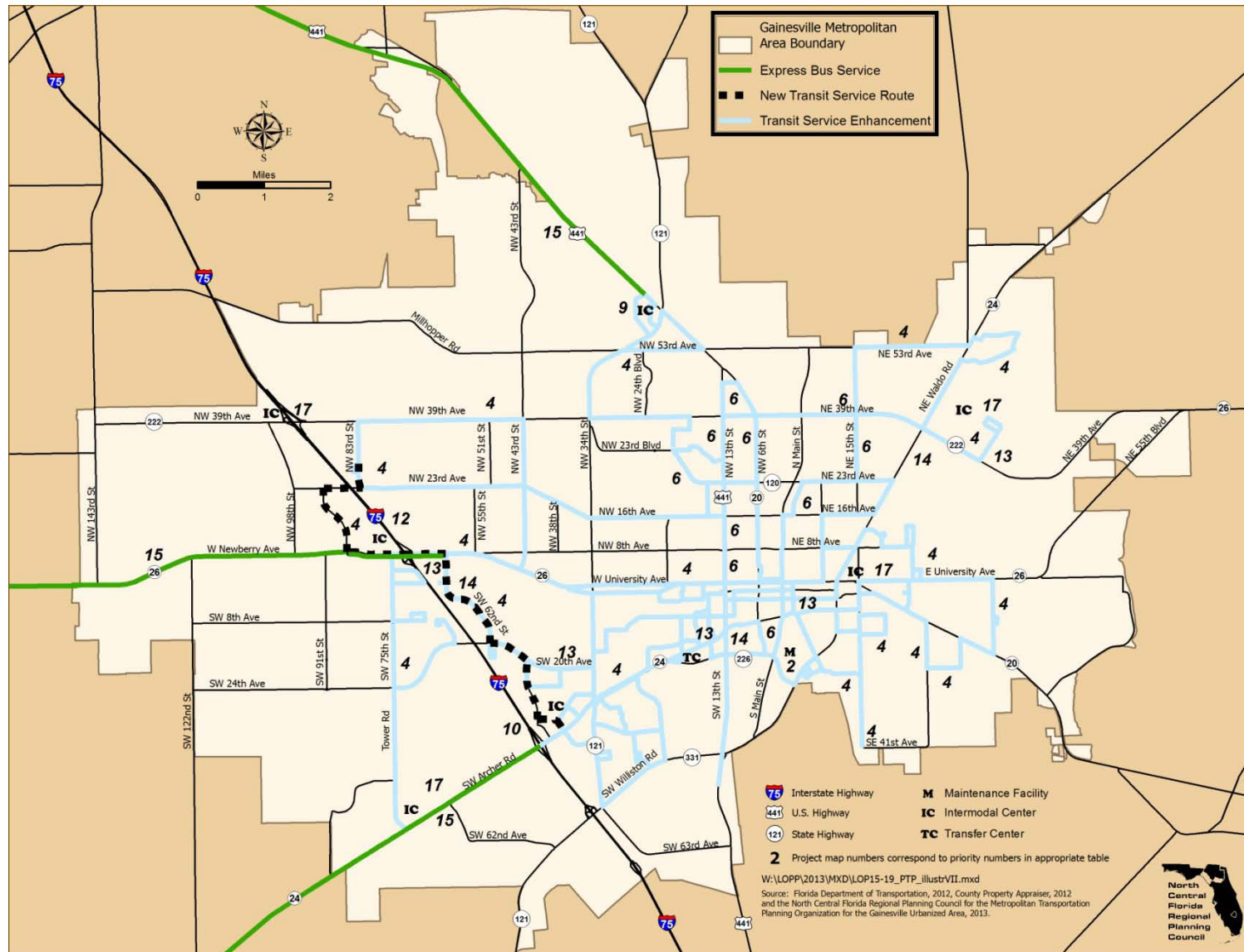
BRT = Bus Rapid Transit; FM = From; NA = Not Applicable; PD&E = Project Design and Environment Study; SE = Southeast; SR = State Road; SW = Southwest
MTPO = Metropolitan Transportation Planning Organization for the Gainesville Urbanized Area

Initial Project Design and Environment Study Priorities- City of Gainesville-Maintained Facilities were developed by Metropolitan Transportation Planning Organization for the Gainesville Urbanized Area, based on the 2035 Long Range Transportation Plan, the *Livable Community Reinvestment Plan*, Cost Feasible Plan projects. These projects were included in the 2035 Long Range Transportation Plan, the *Livable Community Reinvestment Plan* at the request of the City of Gainesville.

* At its February 4, 2013 meeting, the Metropolitan Transportation Planning Organization for the Gainesville Urbanized Area approved a waiver for a 90-foot cross-section for the Village Point development project.

THIS PAGE LEFT BLANK INTENTIONALLY

Illustration VII
Public Transportation Priorities
Fiscal Years 2014-15 to 2018-19



F. Public Transportation Priorities

Table 6 identifies public transportation project priorities. This category includes: commuter assistance projects; intermodal facility projects; park-and-ride facility projects; railroad right-of-way projects; and transit system projects for the Fiscal Years 2014-15 to 2018-19.

Table 6
Public Transportation Priorities
Fiscal Year 2014-15 to 2018-19
(within the Gainesville Metropolitan Area)

Number	Project	Location	Description
1 <i>Funded Annually</i>	<i>Block Grant- Public Transit Operating</i>	<i>RTS Systemwide</i>	<i>Operating Assistance [Funded annually by State]*</i>
2	RTS Phase 2 of 2 Maintenance Facility	AT: 34 SE 13th Road	Project includes construction of bus parking lot, including acquisition of property and demolition of existing building. RTS has received SIB Loan contingent on the use of STP funds for loan repayment in the amount of \$3.9 million
3 <i>Partially Funded</i>	<i>Capital Equipment- purchase of rolling stock</i>	<i>RTS Systemwide</i>	<i>Replace and expand bus fleet as needed to preserve fleet age and support existing and planned service improvement as identified in the RTS ten-year TDP</i>
4	Implement new transit service- Service Development Funding - to include any of the TDP service enhancements	RTS Systemwide	Implementation of new routes, increased frequencies of routes and extended hours of service as per RTS Transit Development Plan, MTPO 2035 Long Range Transportation Plan and City Comprehensive Plan
5	Enhance Bus Service	RTS Systemwide	Implement increases of service frequencies of routes and extended hours of service according to the RTS Transit Development Plan and MTPO 2035 Transportation Plan
6	RTS Bus Stop Amenities	RTS Systemwide	Purchase and install bus shelters bicycle racks, etc.
7	Capital Equipment- Purchase transit support vehicles	RTS Systemwide	Purchase non-revenue vehicles to support transit service
8	Enhance transit facilities- Regional Intermodal Transportation Center	AT: Archer Road [SR 24] & SW 16 Avenue [SR 226] intersection	Planning, design, engineering and construction of a regional multimodal regional transportation center [site not determined]
9	Commuter Assistance	RTS Systemwide	Commuter Assistance Grants

Table 6 (Continued)
Public Transportation Priorities
Fiscal Years 2014-15 to 2018-19
(within the Gainesville Metropolitan Area)

Number	Project	Location	Description
10 <i>Partially Funded</i>	<i>Park-and-Ride Lot with bus service</i>	<i>AT: US 441 / SR 121</i>	<i>Construct park-n-ride lot with transit service</i>
11	Archer Road [SR 24] Intermodal Center [Butler Plaza]	AT: Interstate 75	Construct transit transfer facility with park-n-ride lot- Butler Plaza
12	Capital Equipment- Purchase Fare Collection Equipment	RTS Systemwide	Purchase new fareboxes for existing fleet, upgrade vault, ticket vending and card service equipment
13	Newberry Road [SR 26] Transfer Station with Park-and-Ride	Oaks Mall Area	Station would include park-and-ride lot with connections to future BRT service
14	Capital- Corridor infrastructure for Bus Rapid Transit (BRT)	Along Preferred Configuration	Construct transit stations along preferred BRT configuration(s)
15	Service- Bus Rapid Transit (BRT)	Preferred BRT Configuration	BRT service according to Alternatives Analysis (Go-Enhance RTS Study) results
16	Capital- Construct Park- And-Ride Lots to Support Express Bus Service	Transportation Corridors- State Road 20; State Road 26; State Road 24; State Road 222; & US 441	Locations and funding to be determined
17	Limited Stop Bus Service to Outlying Municipalities or Unincorporated Alachua County to Park-And-Ride Lots or Traditional Neighborhood developments	Transportation Corridors- State Road 20; State Road 26; State Road 24; State Road 222; & US 441	Initiate full funding agreement with Alachua County for services outside Gainesville City Limit, including ADA trips. Implement park-and-n-ride service from areas outside Gainesville City Limit into the City of Gainesville, Cities to include Alachua, Archer, Hawthorne, High Springs and Newberry [no funding available and no locations determined - service priority contingent on community funding support]

Table 6 (Continued)
Public Transportation Priorities
Fiscal Years 2014-15 to 2018-19
(within the Gainesville Metropolitan Area)

Number	Project	Location	Description
18	Intermodal Centers	AT: Five Points - [SR 20 @ SR 24]; Gainesville Regional Airport; SpringHills / Santa Fe College [SR 222 @ I-75]; & Archer Road [SR 24] & Tower Road intersection	Construct transit transfer facility with park-n-ride lot [no parcel sites have been determined]

Note: Projects in italic text are partially funded, as shown in the Transportation Improvement Program.

@ = at; ADA = Americans with Disabilities Act of 1990; BRT = Bus Rapid Transit; I = Interstate
PD&E = Project Design and Environment Study; RTS = Regional Transit System;
SIB = State Infrastructure Bank; SR = State Road; TDP = Transit Development Plan; US = United States
MTPO = Metropolitan Transportation Planning Organization for the Gainesville Urbanized Area

* Block Grant program is an annual formula program with funds provided by State legislation.

Initial Public Transportation Priorities were developed by Regional Transit System staff, based on the Regional Transit System Transit Development Plan.

Illustration VIII Right-of-Way Priorities State Highway System Fiscal Years 2014-15 to 2018-19



G. Right-of-Way Priorities

Table 7A identifies State Highway System Right-of-Way project priorities for the Fiscal Years 2014-15 to 2018-19 Transportation Improvement Program. Table 7B identifies Alachua County-maintained facility Right-of-way project priorities. Table 7C identifies City of Gainesville-maintained facility Right-of-way project priorities.

Table 7A
Right-of-Way Priorities - State Highway System
Fiscal Years 2014-15 to 2018-19
(within the Gainesville Metropolitan Area)

Number	Project	Location	Description
1	NW 34 Street [SR 121]	FM: NW 16 Avenue TO: US 441	Acquire necessary ROW for construction of center turnlanes along this facility
2	BRT Corridor Infrastructure-partial	FM: Santa Fe Village TO: Gainesville Regional Airport	Acquire necessary ROW for installation of BRT infrastructure
3	Archer Road [SR 24] BRT	FM: MTPO Boundary TO: SW 45 Street	Acquire necessary ROW for Dedicated lane(s) design, and additional roadway capacity
4	Williston Road [SR 121]	FM: SW 62 Avenue TO: SW 35 Way	Acquire necessary ROW for additional roadway capacity

Note: Projects in italic text are partially funded, as shown in the Transportation Improvement Program.

BRT = Bus Rapid Transit; FM = From; NW = Northwest; ROW = Right-of-Way; SR = State Road;
TSM = Transportation System Management; US = United States
MTPO = Metropolitan Transportation Planning Organization for the Gainesville Urbanized Area

Initial Right-of-way Priorities were developed by Metropolitan Transportation Planning Organization for the Gainesville Urbanized Area, based on the 2035 Long Range Transportation Plan, the *Livable Community Reinvestment Plan*, Cost Feasible Plan projects.

Table 7B
Right-of-Way Priorities - Alachua County-Maintained Facilities
Fiscal Years 2014-15 to 2018-19
(within the Gainesville Metropolitan Area)

Number	Project	Location	Description
1	SW 20 Avenue Reconstruction	FM: SW 61 Street TO: SW 52 Street	Acquire necessary ROW to construct a 4-lane divided facility and multi-use path
2	SW 8 Avenue- Phase 2	FM: SW 143 Street TO: SW 122 Street	Acquire necessary ROW for 2-lane roadway and multi-use path
3	NW 23 Avenue	FM: NW 59 Terrace TO: NW 51 Street	Acquire necessary ROW for 4-laning and resurfacing
4	NW 23 Avenue	FM: NW 98 Street TO: NW 55 Street	Acquire necessary ROW for 4-laning
5	SE 43 Street	FM: Hawthorne Road [SR 20] TO: University Avenue [SR 26]	Acquire necessary ROW for construction of two-way left turnlanes, multi-use path and signalization
6	SW 45 Street / SW 47 Street	FM: Archer Road [SR 24] TO: SW 30 Avenue	Acquire necessary ROW for new roadway with travel lanes, BRT dedicated transit lanes and multi-use path
7	SW 30 Avenue	FM: SW 47 Street TO: SW 43 Street	Acquire necessary ROW for new Interstate 75 overpass with travel lanes, BRT dedicated transit lanes and the Archer Braid Trail
8	NW 83 Street	FM: NW 39 Avenue [SR 222] TO: NW 46 Avenue	Acquire necessary ROW for new roadway with travel lanes, BRT dedicated transit lanes and the Millhopper Greenway
9	NW 83 Street	FM: NW 23 Avenue TO: NW 39 Avenue [SR 222]	Acquire necessary ROW for BRT dedicated transit lanes
10	Ft. Clarke Boulevard / NW 83 Street Corridor	FM: Newberry Road [SR 26] TO: NW 23 Avenue	Acquire necessary ROW for BRT dedicated transit lanes & new multimodal-only Interstate 75 overpass
11	NW 46 Avenue	FM: NW 98 Street TO: NW 83 Street	Acquire necessary ROW for new roadway with travel lanes, BRT dedicated transit lanes & new multi-use path and new Interstate 75 overpass

Note: Projects in italic text are partially funded, as shown in the Transportation Improvement Program.

BRT = Bus Rapid Transit; FM = From; Ft = Fort; NW = Northwest; ROW = Right-of-Way;
SR = State Road; SW = Southwest

Initial Right-of-way Priorities- Alachua County-Maintained Facilities were developed by Metropolitan Transportation Planning Organization for the Gainesville Urbanized Area, based on the 2035 Long Range Transportation Plan, the *Livable Community Reinvestment Plan*, Cost Feasible Plan projects. These projects were included in the 2035 Long Range Transportation Plan, the *Livable Community Reinvestment Plan* at the request of Alachua County.

Table 7C
Right-of-Way Priorities - City of Gainesville-Maintained Facilities
Fiscal Years 2014-15 to 2018-19
(within the Gainesville Metropolitan Area)

Number	Project	Location	Description
NA	SE 4 Street- Phase 2	FM: Williston Road [SR 331] TO: Depot Avenue	Acquire necessary ROW for reconstruction
NA	SW 62 Boulevard	FM: Archer Road [SR 24] TO: Newberry Road [SR 24]	Acquire necessary ROW for four lanes plus two additional BRT lanes in the middle
NA	Hull Road Extension	FM: SW 20 Avenue TO: SW 34 Street [SR 121]	Identify adequate right-of-way for MTPO-approved 100-foot cross-section *

Note: Projects in italic text are partially funded, as shown in the Transportation Improvement Program.

BRT = Bus Rapid Transit; FM = From; NA = Not Applicable; ROW = Right-of-Way; SE = Southeast
SR = State Road; SW = Southwest
MTPO = Metropolitan Transportation Planning Organization for the Gainesville Urbanized Area

Initial Right-of-way Priorities- City of Gainesville-Maintained Facilities were developed by Metropolitan Transportation Planning Organization for the Gainesville Urbanized Area, based on the 2035 Long Range Transportation Plan, the *Livable Community Reinvestment Plan*, Cost Feasible Plan projects. These projects were included in the 2035 Long Range Transportation Plan, the *Livable Community Reinvestment Plan* at the request of the City of Gainesville.

* At its February 4, 2013 meeting, the Metropolitan Transportation Planning Organization for the Gainesville Urbanized Area approved a waiver for a 90-foot cross-section for the Village Point development project.

**Illustration IX
Safety Priorities
Fiscal Years 2014-15 to 2018-19**



H. Safety Priorities

Table 8 identifies transportation safety project priorities developed by the Metropolitan Transportation Planning Organization for the Gainesville Urbanized Area Technical Advisory Committee and Alachua County Traffic Safety Team for the Fiscal Years 2014-15 to 2018-19 Transportation Improvement Program.

Table 8
Safety Priorities
Fiscal Years 2014-15 to 2018-19
(within the Gainesville Metropolitan Area)

Number	Project	Location	Description
1	SW 62 Boulevard	AT: NW 4 Place / Oaks Mall entrance	Access management*
2	Santa Fe College Area	Areawide	Traffic analysis on/off campus
3	University Avenue [SR 26]	AT: Waldo Road [SR 24]	Intersection modifications to enhance pedestrian/cyclist crossing consisting of: ----- 1. adding Rail/Trail Signage to provide wayfinding and increase aesthetics ----- 2. adding ladder striping to crosswalks ----- 3. moving the stop bars further back ----- 4. install a vegetative median on State Road 331 (Williston Road) at the State Road 26 (E. University Avenue) intersection to enhance pedestrian safety
4	NW 13 Street [US 441]	AT: NW 6 Street [SR 20]	Realign intersection
5 <i>Partially Funded</i>	<i>Traffic Management System</i>	<i>AT: Countywide</i>	<i>Conversion to flashing yellow</i>

Note: Projects in italic text are partially funded, as shown in the Transportation Improvement Program.

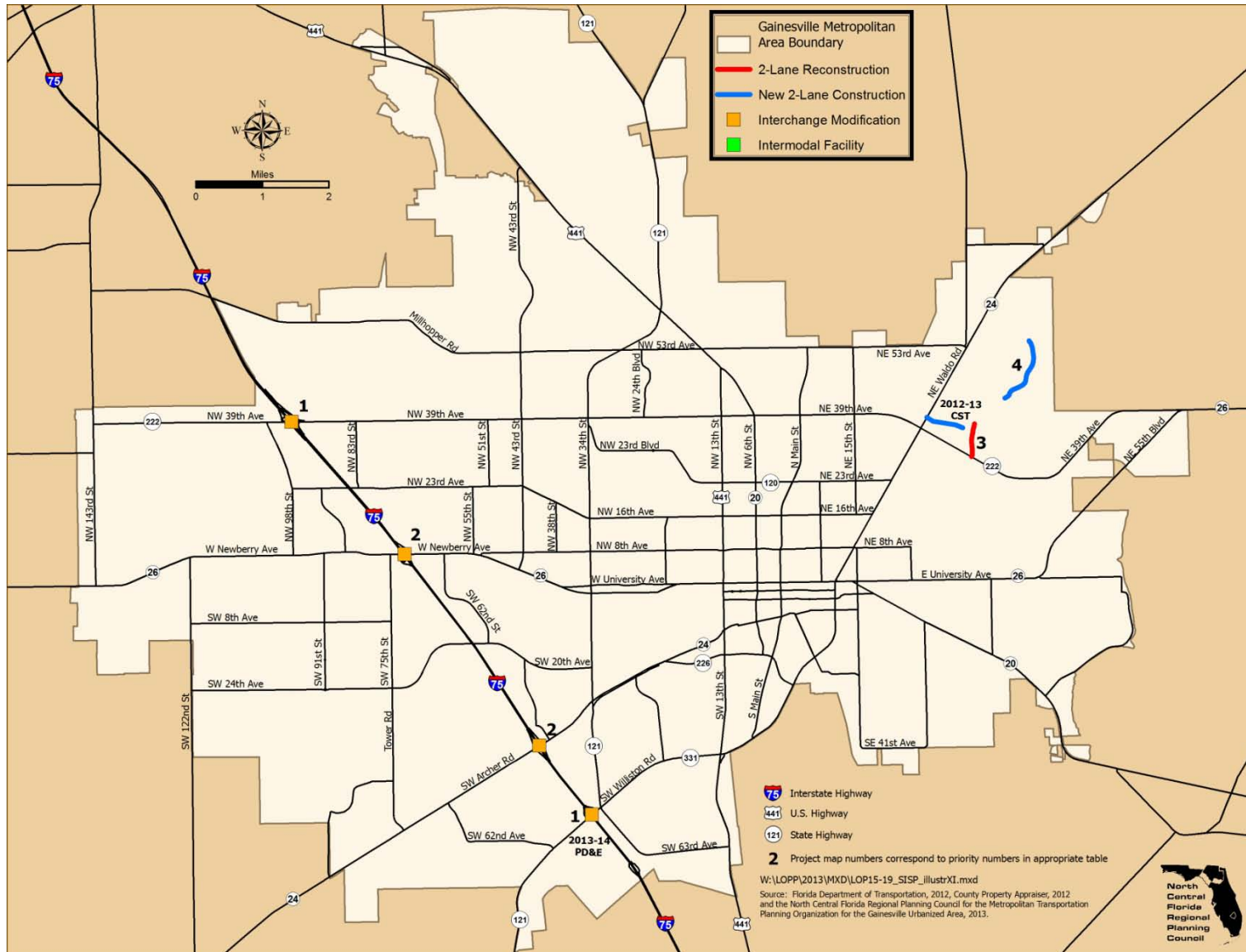
E = East; NW = Northwest; SR = State Road; SW = Southwest

*At this intersection, the observed major crash pattern is angle collisions involving southbound through and eastbound left-turning vehicles. Eastbound vehicles exiting the Oaks Mall fail to yield the right-of-way and collide with southbound vehicles. This type of crash accounted for 82% of all crashes at this intersection. Peak periods were observed between 1:00 pm to 2:00 pm and 5:00 pm to 6:00 pm. Therefore, explore the possibility of a raised median on NW 62 Boulevard to restrict turning movements, particularly eastbound left. Traffic exiting the Oaks Mall traveling towards north has several other exit options with signalized and non-signalized driveways along State Road 26/Newberry Road and a signalized driveway at NW 62 Street & NW 1 Place.

Initial Safety Priorities were developed by the Alachua County Traffic Safety Team.

THIS PAGE LEFT BLANK INTENTIONALLY

Illustration X Strategic Intermodal System Priorities Fiscal Years 2014-15 to 2018-19



I. Strategic Intermodal System Priorities

Table 9 identifies Strategic Intermodal System project priorities for the Fiscal Years 2014-15 to 2018-19 Transportation Improvement Program.

Table 9
Strategic Intermodal System Priorities
Fiscal Years 2014-15 to 2018-19
(within the Gainesville Metropolitan Area)

Number	Project	Location	Description
1 <i>Partially Funded (PD&E)</i>	<i>Interstate 75 Interchange</i>	<i>AT: Williston Road [SR 121] AT: NW 39 Avenue [SR 222]</i>	<i>Interchange modifications per SIS Cost Feasible Plan</i>
2	Interstate 75 Interchange	AT: Archer Road [SR 24] AT: Newbery Road [SR 26]	Interchange modifications per SIS Cost Feasible Plan
3	NE 39 Avenue [SR 222] access to airport	FM: NE 39 Avenue [SR 222] TO: Airport Terminal (Gainesville Regional Airport)	Reconfigure ingress-egress, improve curb-and-gutter system, add bike lanes and sidewalks, install stormwater drainage, install traffic guidance system of signs and signals; and install bike lockers
4	Extension of Airport Industrial Park Road	FM: Airport service road TO: NE 49 Road (east end of Airport Industrial Park)	Extend existing service road to provide access to Waldo Road (Extend existing access road through east end of Airport Industrial Park, from Waldo Road [SR 24])

Notes: 1. Projects in italic text are partially funded, as shown in the Transportation Improvement Program.

2. Priorities #3 and #4 listed above are endorsed by the Metropolitan Transportation Planning Organization for the Gainesville Urbanized Area with the following conditions:
- A. Provided they do not compete with roadway capacity construction funding typically available from the Surface Transportation Program; and
 - B. With the understanding that these funds do not come from existing funds that could be used for other projects within the Gainesville Metropolitan Area.

FM = From;

MTPO = Metropolitan Transportation Planning Organization for the Gainesville Urbanized Area

N = North; NE = Northeast; NW = Northwest; PD&E = Project Design and Environment;

SIS = Strategic Intermodal System; SR = State Road

Initial Strategic Intermodal System Priorities were developed by Gainesville Regional Airport staff and the Metropolitan Transportation Planning Organization for the Gainesville Urbanized Area based on the Strategic Intermodal System Cost Feasible Plan.

Illustration XI
Surface Transportation Program Fund Priorities
Fiscal Years 2014-15 to 2018-19



J. Surface Transportation Program Fund Priorities

Table 10 identifies Surface Transportation Program-eligible capacity modification priorities. This category includes: bicycle facility projects; Non-State resurfacing projects; pedestrian facility (including school safety concern) projects; road construction and reconstruction projects; streetlighting; and additional public transportation, traffic operations and transportation disadvantaged projects for the Fiscal Years 2014-15 to 2018-19 Transportation Improvement Program.

Table 10
Surface Transportation Program Fund Priorities
Fiscal Years 2014-15 to 2018-19
(within the Gainesville Metropolitan Area)

Number	Project	Location	Description
1	Streetcar Feasibility Study	FM: Downtown TO: Butler Plaza (via University of Florida)	Conduct Streetcar feasibility study *
2	Intermodal Center/Park-N-Ride Lot	AT: Ft. Clarke Boulevard / Newberry Road area	Construct Intermodal Center / Park-N-Ride Lot
3	Transit Maintenance Facility	AT: RTS location	Construct transit maintenance facility expansion- Phase 2 of 2; repayment of \$3.9 million State Infrastructure Bank loan to be repaid with Surface Transportation Program funds

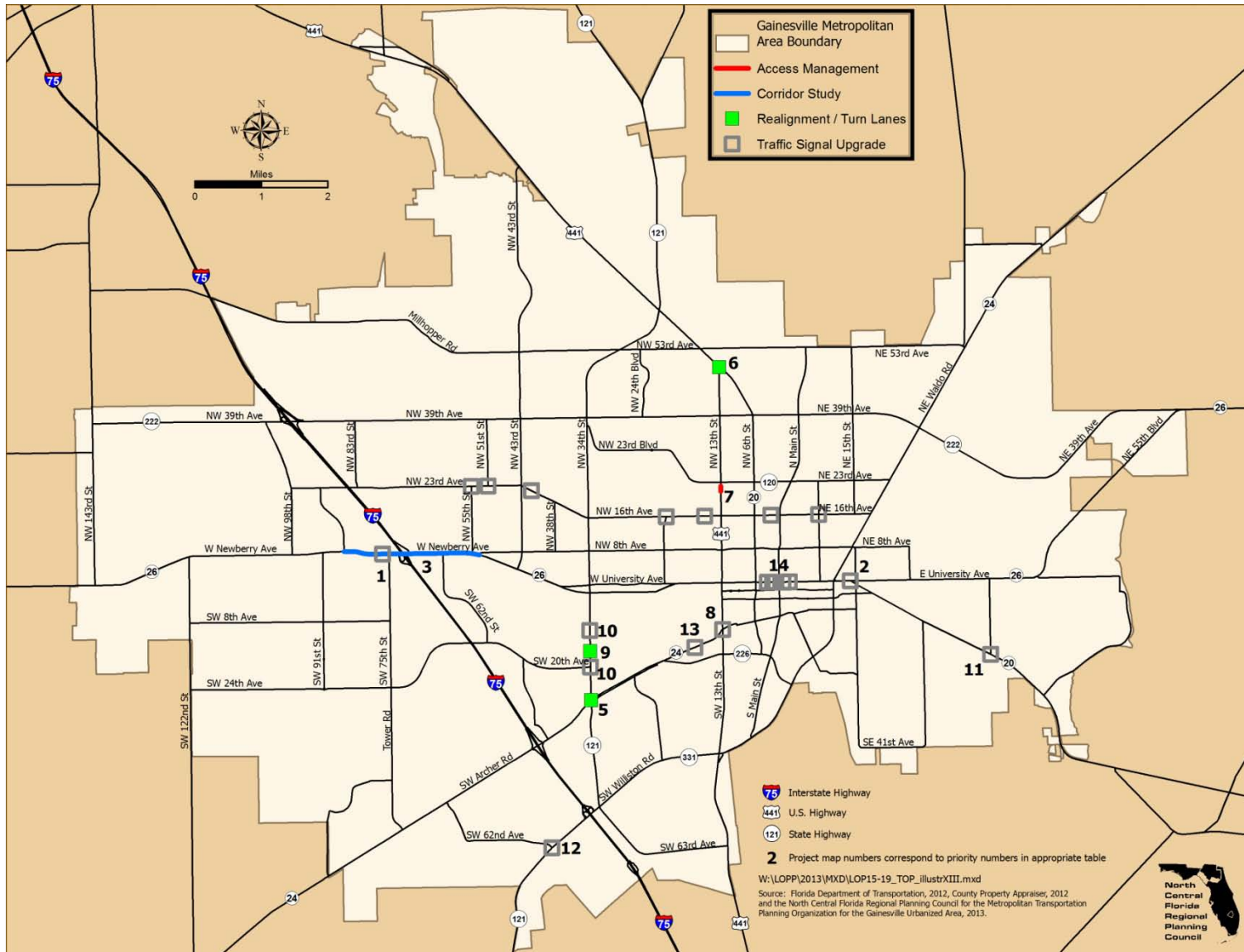
Note: Projects in italic text are partially funded, as shown in the Transportation Improvement Program.

FM = From; Ft. = Fort; RTS = Regional Transit System

Initial Surface Transportation Program Fund Priorities were developed by Metropolitan Transportation Planning Organization for the Gainesville Urbanized Area, based on the 2035 Long Range Transportation Plan, the *Livable Community Reinvestment Plan*, Cost Feasible Plan projects.

* The City of Gainesville has funded \$100,000 for a conceptual study.

Illustration XII
Traffic Operations Priorities Local Facilities
Fiscal Years 2014-15 to 2018-19



K. Traffic Operations Priorities

Table 11A identifies State Highway System traffic operations project priorities. Table 11B identifies local facility traffic operations project priorities. This category includes: congestion management system projects; intelligent transportation system projects; and intersection modification projects for the Fiscal Years 2014-15 to 2018-19 Transportation Improvement Program.

Table 11A
Traffic Operations Priorities - State Highway System Only
Fiscal Years 2014-15 to 2018-19
(within the Gainesville Metropolitan Area)

Number	Project	Location	Description
1 <i>Partially Funded</i>	<i>Newberry Road [SR 26]</i>	<i>AT: NW 76 Street</i>	<i>Reconstruction of traffic signal</i>
2	University Avenue [SR 26]	AT: Hawthorne Road [SR 20]	Reconstruction of traffic signal
3	Newberry Road [SR 26]	FM: Ft Clarke Boulevard TO: NW 8 Avenue	Corridor study
4	Traffic Management System	AT: Countywide	Conversion to yellow flashing arrows
5	SW 34 Street [SR 121]	AT: Archer Road [SR 24]	Construct eastbound right turnlane and lengthen southbound left turnlane as noted in FDOT Technical Report
6	NW 13 Street [US 441]	AT: NW 6 Street [SR 20]	Intersection realignment/construction/ signalization
7	NW 13 Street [US 441]	FM: 2100 block TO: 2200 block	Access management and pedestrian refuge islands
8 <i>Partially Funded*</i>	<i>SW 13 Street [US 441]</i>	<i>AT: Archer Road [SR 24]</i>	<i>Signal reconstruction and retaining wall modifications</i>
9 <i>Partially Funded</i>	<i>SW 34 Street [SR 121]</i>	<i>AT: Hull Road</i>	<i>Extend southbound left turnlane; install northbound right exclusive right turnlane variable message board</i>
10	SW 34 Street [SR 121]	AT: Radio Road AT: SW 20 Avenue	Traffic signal replacement to address structural deficiency
11	Hawthorne Road [SR 20]	AT: SE 43rd Street	Intersection modification
12	Williston Road [SR 121]	AT: SW 62nd Avenue	Intersection modification
13 <i>Partially Funded</i>	<i>Archer Road [SR 24]</i>	<i>AT: Center Drive / VA Entrance</i>	<i>Traffic signal replacement to address structural deficiency</i>

Table 11A (Continued)
Traffic Operations Priorities- State Highway System Only
Fiscal Years 2014-15 to 2018-19
(within the Gainesville Metropolitan Area)

Number	Project	Location	Description
14	University Avenue [SR 26]	AT: W 3 Street, W 2 Street, W 1 Street, E 1 Street & E 3 Street	Replace five existing galvanized mast arms with MTPO-approved mast arms
15	Traffic Signal Upgrade - Non-SHS	At various intersections (see Table 12B)	Replace existing signal with horizontal mast arm signals

Note: Projects in italic text are partially funded, as shown in the Transportation Improvement Program.

* This project is partially funded with University of Florida Campus Development Agreement funds. Initial Traffic Operations Priorities were developed by the City of Gainesville/Alachua County Traffic Operations Team.

FM = From; NW = Northwest; PD&E = Project Design and Environment; SE = Southeast
SHS = State Highway System; SR = State Road; SW = Southwest; VA = Veterans Administration
MTPO = Metropolitan Transportation Planning Organization for the Gainesville Urbanized Area

Table 11B
Traffic Operations Priorities - Local Facilities
Fiscal Years 2014-15 to 2018-19
(within the Gainesville Metropolitan Area)

Number	Project	Location	Description
1 <i>Partially Funded</i>	<i>Traffic Management System</i>	<i>AT: Countywide</i>	<i>Conversion to yellow flashing arrows</i>
2	NE 8 Avenue	AT: NE 7 Street	Traffic signal reconstruction
3	NW 8 Avenue	AT: NW 10 Street	Traffic signal reconstruction
4	SE 4 Avenue	AT: SE 3 Street	Traffic signal reconstruction
5	SE 3 Avenue	AT: SE 15 Street	Replace traffic signal with roundabout
6	NW 16 Avenue	AT: NW 2 Street	Traffic signal reconstruction to mast arms
7	NW 16 Avenue	AT: NW 16 Terrace	Traffic signal reconstruction to mast arms
8	NE 16 Avenue	AT: NE 9 Street	Traffic signal reconstruction to mast arms
9	NW 16 Avenue	AT: NW 22 Terrace	Traffic signal reconstruction to mast arms
10	NW 23 Avenue	AT: NW 55 Street	Traffic signal reconstruction to mast arms
11	NW 23 Avenue	AT: NW 51 Street	Traffic signal reconstruction to mast arms
12	NW 16 Boulevard	AT: NW 41 Street	Traffic signal reconstruction to mast arms

Note: Projects in italic text are partially funded, as shown in the Transportation Improvement Program.

NE = Northeast; NW = Northwest

Initial Traffic Operations Priorities were developed by the City of Gainesville/Alachua County Traffic Operations Team.

Illustration XIII
Transit Corridor Development Priorities
Fiscal Years 2014-15 to 2018-19



L. Transit Corridor Development Priorities

Table 12 identifies transit corridor development project priorities for the Fiscal Years 2014-15 to 2018-19 Transportation Improvement Program.

Table 12
Transit Corridor Development Priorities
Fiscal Years 2014-15 to 2018-19
(within the Gainesville Metropolitan Area)

Number	Project	Location	Description
1	Newberry Road [SR 26]	FM: City of Newberry TO: City of Gainesville	Express bus service from Newberry Road park-n-ride lot to the City of Gainesville
2	Archer Road [SR 24]	FM: City of Archer TO: Gainesville	Express bus service from Archer Road park-n-ride lot to the City of Gainesville
3	US 441 [SR 25]	FM: City of High Springs TO: Gainesville	Express bus service from High Springs and Alachua to the City of Gainesville
4	Hawthorne Road [SR 20]	FM: City of Hawthorne TO: Gainesville	Express bus service from Hawthorne to the City of Gainesville

FM = From; SR = State Road; US = United States

Initial Transit Corridor Development Priorities were developed by Metropolitan Transportation Planning Organization for the Gainesville Urbanized Area, based on the Regional Transit System Transit Development Plan.

M. Transportation Disadvantaged Priorities

Table 13, Table 14, Table 15, Table 16 and Table 17 identify transportation disadvantaged project priorities for the Fiscal Years 2014-15 to 2018-19 Transportation Improvement Program.

Table 13
Transportation Disadvantaged Priorities - Transportation Disadvantaged Trust Fund
Fiscal Years 2014-15 to 2018-19
(Alachua County Areas Outside of the Gainesville Metropolitan Area)

Number	Project	Location	Description
1	Provision of paratransit trips for vital medical purposes (dialysis, cancer care).	Areas outside of the Gainesville Metropolitan Area	Provide paratransit trips to eligible individuals with state TD Trust Funds.
2	Provision of paratransit trips for medical purposes (doctor appointments, pharmacy, physical therapy).	Areas outside of the Gainesville Metropolitan Area	Provide paratransit trips to eligible individuals with state TD Trust Funds.
3	Provision of paratransit trips for employment purposes.	Areas outside of the Gainesville Metropolitan Area	Provide paratransit trips to eligible individuals with state TD Trust Funds.
4	Provision of paratransit trips for shopping purposes.	Areas outside of the Gainesville Metropolitan Area	Provide paratransit trips to eligible individuals with state TD Trust Funds.
5	CTC Paratransit Van Fleet Expansion- TD Trust Funds	Countywide	Purchase two lift-equipped paratransit vans each year with any TD Trust Funds remaining after all TD Trust Fund paratransit trip priorities have been fulfilled.

- Notes: 1. The grant funds allocated from the Transportation Disadvantaged Trust Fund are for the specific purpose of purchasing passenger trips for non-sponsored transportation disadvantaged individuals, or for equipment to be utilized by a Community Transportation Coordinator. Twenty-five percent of the Transportation Disadvantaged Trust Fund allocation may be spent to purchase capital equipment.
2. The Alachua County Transportation Disadvantaged Coordinating Board, in cooperation with the Community Transportation Coordinator, prioritize the use of the state Transportation Disadvantaged Trust Funds. The current and past Transportation Disadvantaged Trust Fund allocations are sufficient to provide trips under priorities 1 and 2 on a first come, first served basis.

CTC = Community Transportation Coordinator; TD = Transportation Disadvantaged

Initial Transportation Disadvantaged Priorities were developed by the Alachua County Transportation Disadvantaged Coordinating Board.

Table 14
Transportation Disadvantaged Priorities - Federal Transit Administration
Section 5310 - Capital Funding/Equipment Program
Fiscal Years 2014-15 to 2018-19
(Alachua Countywide)

Number	Project	Location	Description
1	RTS Paratransit Van Fleet Expansion- Section 5310 funds	Countywide	Purchase a replacement vehicle to provide transportation for the elderly and disabled in Alachua County and the City of Gainesville
2*	Quality of Life Community Services Accessible Taxicab Fleet Expansion- Section 5310 funds	Countywide	Purchase accessible taxicab vehicles

Note: Capital expenditures shall be in accordance with United States Code Section 5310 funding eligibility criteria.

* In accordance with Chapter 427, Florida Statutes, the service provider (Quality of Life Community Services Taxicab) must execute a coordination agreement with the Alachua County Community Transportation Coordinator (MV Transportation) in order to receive these funds.

RTS = Regional Transit System

Initial Transportation Disadvantaged Priorities were developed by the Alachua County Transportation Disadvantaged Coordinating Board.

Table 15
Transportation Disadvantaged Priorities - Federal Transit Administration
Section 5311 - Nonurbanized Area Formula Program
Fiscal Years 2014-15 to 2018-19
(Alachua County Areas Outside of the Gainesville Urbanized Area)

Number	Project	Location	Description
1 <i>Partially Funded</i>	<i>Provision of paratransit trips that cannot be provided with TD Trust Funds.</i>	<i>Areas outside of the Gainesville Urbanized Area</i>	<i>Maintain the fixed route between the Oaks mall and Santa Fe College in the unincorporated portions of the Gainesville Urbanized Area. Provide demand response service in the nonurbanized areas of Alachua County</i>
2	RTS Paratransit Van Fleet Expansion- Section 5311 funds	Countywide- Nonurbanized	Purchase two demand response vehicles

Note: Capital and operating expenditures shall be in accordance with United States Code Section 5311 funding eligibility criteria.

RTS = Regional Transit System; TD = Transportation Disadvantaged

Initial Transportation Disadvantaged Priorities were developed by the Alachua County Transportation Disadvantaged Coordinating Board.

Table 16
Transportation Disadvantaged Priorities - Federal Transit Administration
Section 5316 - Job Access And Reverse Commute Program
Fiscal Years 2014-15 to 2018-19
(Gainesville Metropolitan Area)

Number	Project	Location	Description
1	Job Access and Reverse Commute Program	Areas within the Gainesville Metropolitan Area and outside the Regional Transit System fixed-route ADA service area	Use FTA grant to provide job access and job-related transportation to TD-eligible individuals.

ADA = Americans with Disabilities Act of 1990; FTA = Federal Transit Administration
TD = Transportation Disadvantaged

Initial Transportation Disadvantaged Priorities were developed by the Alachua County Transportation Disadvantaged Coordinating Board.

Table 17
Transportation Disadvantaged Priorities - Federal Transit Administration
Section 5317 - New Freedom Program
Fiscal Years 2014-15 to 2018-19
(Gainesville Metropolitan Area/Alachua County)

Number	Project	Location	Description
1	New Freedom Program	Areas within the Gainesville Metropolitan Area and outside the Regional Transit System fixed-route Americans with Disabilities Act of 1990 service area	Use FTA grant to provide paratransit service to disabled citizens
2	Regional Transit System Capital Purchase of Replacement Paratransit Vehicle	Countywide	Purchase replacement paratransit vehicle to provide transportation to the elderly and disabled in Alachua County and the City of Gainesville
3*	Quality of Life Community Services Taxicab Operating Capital- Section 5317 funds	Countywide	Operating subsidies for transportation disadvantaged persons needing taxicab service

* In accordance with Chapter 427, Florida Statutes, the service provider (Quality of Life Community Services Taxicab) must execute a coordination agreement with the Alachua County Community Transportation Coordinator (MV Transportation) in order to receive these funds.

FTA = Federal Transit Administration

Initial Transportation Disadvantaged Priorities were developed by the Alachua County Transportation Disadvantaged Coordinating Board.

THIS PAGE LEFT BLANK INTENTIONALLY

Illustration XIV
Transportation Regional Incentive Program Priorities
Fiscal Years 2014-15 to 2018-19



N. Transportation Regional Incentive Program Priorities

Table 18 identifies Transportation Regional Incentive Program project priorities for the Fiscal Years 2014-15 to 2018-19 Transportation Improvement Program.

Table 18
Transportation Regional Incentive Program Priorities
Fiscal Years 2014-15 to 2018-19
(within the Gainesville Metropolitan Area)

Number	Project	Location	Description
1 <i>Partially Funded</i>	<i>SW 62 Connector</i>	<i>FM: Williston Road [SR 331] TO: Newberry Road [SR 26]</i>	<i>SW 62 Boulevard extension project, including extension of SW 40 Boulevard south to SW 34 Street, extending it east to connect at Williston Road – regionally significant project: 1. would alleviate congestion along Interstate-75 between Newberry Road and Williston Road, and other state roads such as Archer Road [SR 24], SW 34 Street [SR 121], Newberry Road [SR 26]; 2. improve system connectivity; and 3. add roadway capacity.</i>
2	Archer Road	FM: Levy County line TO: Tower Road	Reconstruct as a 4-lane facility

Note: Projects in italic text are partially funded, as shown in the Transportation Improvement Program.

FM = From; SR = State Road; SW = Southwest

Initial Transportation Regional Incentive Program Priorities were developed by Metropolitan Transportation Planning Organization for the Gainesville Urbanized Area, based on Alachua County and City of Gainesville Comprehensive Plan Transportation Elements.

THIS PAGE LEFT BLANK INTENTIONALLY

Appendix A Transportation Plans and Programs - Eight Metropolitan Planning Factors to be Considered

THIS PAGE LEFT BLANK INTENTIONALLY

Appendix A: Transportation Plans and Programs - Eight Metropolitan Planning Factors to be Considered

The following is a listing of the factors to be considered pursuant to the Moving Ahead for Progress in the 21st Century Act that was enacted July 6, 2012 as Public Law 112-141. As required by the Act, these factors are being addressed in the development of transportation plans and programs.

- FACTOR 1 The metropolitan transportation planning process shall provide for consideration of projects and strategies that will support the economic vitality of the metropolitan area, especially by enabling global competitiveness, productivity, and efficiency;
- FACTOR 2 The metropolitan transportation planning process shall provide for consideration of projects and strategies that will increase the safety of the transportation system for motorized and nonmotorized users;
- FACTOR 3 The metropolitan transportation planning process shall provide for consideration of projects and strategies that will increase the security of the transportation system for motorized and nonmotorized users;
- FACTOR 4 The metropolitan transportation planning process shall provide for consideration of projects and strategies that will increase the accessibility and mobility options available to people and for freight;
- FACTOR 5 The metropolitan transportation planning process shall provide for consideration of projects and strategies that will protect and enhance the environment, promote energy conservation, and improve quality of life;
- FACTOR 6 The metropolitan transportation planning process shall provide for consideration of projects and strategies that will enhance the integration and connectivity of the transportation system, across and between modes, for people and freight;
- FACTOR 7 The metropolitan transportation planning process shall provide for consideration of projects and strategies that will promote efficient system management and operation; and
- FACTOR 8 The metropolitan transportation planning process shall provide for consideration of projects and strategies that will emphasize the preservation of the existing transportation system.

THIS PAGE LEFT BLANK INTENTIONALLY

Appendix B

Roads Operating at an Unacceptable Highway Level of Service

THIS PAGE LEFT BLANK INTENTIONALLY

Appendix B: Roads Operating at an Unacceptable Highway Level of Service

Table B-1
Roads Operating at an Unacceptable Highway Level of Service
Gainesville Metropolitan Area, 2011
[does not include reserve trips]

Roadway Facility	From	To	2011 AADT	2011 LOS	2010 MSV	2011 MSV
SW 13 Street [US 441] (S-3)	Archer Road	University Avenue	35,000	F	28,200	28,200
NW 13 Street [US 441]. (S-4)	University Avenue	NW 29 Road	29,500	F	29,500	28,200
Newberry Road [SR 26] (S-14)	NW 122 Street	Interstate 75 (West Ramp)	40,000	F	35,500	35,500
Newberry Road [SR 26] (S-15)	Interstate 75 (West Ramp)	NW 8 Avenue	51,500	F	43,700	43,700
SW 2 Avenue [SR 26A] (S-21)	Newberry Road	SW 34 Street	14,700	E	12,495	12,495
NW 34 Street [SR 121] (S-25)	University Avenue	NW 16 Avenue	20,450	F	15,960	15,960
Archer Road [SR 24] (S-47)	GMA Boundary	SW 75 Street	19,600	E	15,960	15,960
Archer Road [SR 24] (S-55)	SW 34 Street	SW 16 Avenue	51,000	F	50,300	50,300
NW 23 Avenue (A-9)	NW 98 Street	NW 55 Street	15,770	F	15,675	15,675
SW 20 Avenue (A-16)	SW 62 Boulevard	SW 34 Street	21,524	F	15,675	15,675
NW 83 Street (A-23)	NW 23 Avenue	NW 39 Avenue	14,157	F	13,668	13,668
Radio Road/ Museum Drive (G-32)	SW 34 Street	SW 13 Street	13,621	F	11,260	11,260
Gale Lemerand Drive (G-39)	Archer Road	University Avenue	12,368	F	10,530	10,530

AADT = Average Annual Daily Traffic; GMA = Gainesville Metropolitan Area; NW = Northwest

LOS = Level of Service; MSV = Maximum Service Volume; SW = Southwest

Maximum service volume for Level of Service D is not attainable.

* Roadway is within the City of Gainesville Transportation Concurrency Exception Area

Illustration B-I Roads Operating at an Unacceptable Highway Level of Service



Appendix C

2035 Long Range Transportation Plan - Livable Community Reinvestment Plan

THIS PAGE LEFT BLANK INTENTIONALLY

Appendix C: 2035 Long Range Transportation Plan - Livable Community Reinvestment Plan

Table C-1
Year 2035 Bicycle/Pedestrian Cost Feasible Plan

Segment Priority	Description	From / To	Length (Miles)	Estimated Cost in 2007 Dollars (Millions)
Surface Transportation Program Enhancements <i>(Cost Feasible Plan Revenues = \$11.5 million)</i>				
B-1	Cross Campus Greenway	Archer Road to SW 34 Street	2.1	\$1.9
B-2	Hull Road Parking Area	SW 34 Street to End of Hull Road Parking Area	0.2	\$0.2
B-3	Hull Road Connector	Hull Road Parking Area/SW 20 Avenue	0.5	\$0.5
B-4	Lake Kanapaha Trail	Tower Road west to Interstate 75	2.3	\$2.1
B-5	SW 34 Street Grade Separated Crossing	SW 34 Street at Hull Road	0.2	\$7.0
Total Surface Transportation Program Enhancement Funded Projects				\$11.7
Local Funds- Alachua County Projects (identified as Cost Feasible by Year 2020)				
NA	SW 8 Avenue multi-use offroad facility	SW 122 Street to SW 91 Street	2.0	\$0.4
NA	NW 98 Street multi-use offroad facility	NW 23 Avenue to NW 39 Avenue	1.0	\$0.3
Total Alachua County Projects				\$0.7
Local Funds- City of Gainesville Projects (identified as Cost Feasible by Year 2015)				
NA	SW 35 Place sidewalk	SW 34 Street to SW 23 Terrace	1.1	\$0.5
Total City of Gainesville Projects				\$0.5
Grand Total Bicycle/Pedestrian Projects				\$12.9

NA = Not attainable; NW = Northwest; SW = Southwest

**Table C-2
Year 2035 Roadway Cost Feasible Plan**

Priority	Description	From / To	Length (Miles)	Estimated Cost in 2010 Dollars (Millions)
Strategic Intermodal System (Cost Feasible Plan Revenues = \$6.4 Million)				
-	Interstate 75 Interchange Modifications	AT Williston Road	-	\$6.4
		AT Archer Road		
		AT Newberry Road		
		AT NW 39 Avenue		
Total Strategic Intermodal System				\$6.4
State Highway System (Cost Feasible Plan Revenues = \$92.0 Million Year of Expenditure Dollars)				
S-1	State Road 226 (SE 16 Avenue) Widen To Four Lanes	Main Street To Williston Road	0.6	\$15.0
S-2	State Road 121 (NW 34 Street)- Construction Of Turnlanes To Improve Safety And Traffic Flow	NW 16 Avenue to US 441	3.5	\$6.0
S-3	State Road 26 (University Avenue) Multimodal Emphasis Corridor Study (See Footnote ^a)	Gale Lemerand Drive to Waldo Road	1.5	\$4.75
S-4	US 441 (W. 13 Street) Multimodal Emphasis Corridor Study (See Footnote ^a)	NW 33 Avenue to Archer Road	2.8	\$4.75
S-5	Waldo Road Multiway Boulevard Redesign To Support Bus Rapid Transit, Multi-Trail And Corridor Redevelopment Study (PD&E) [See Footnote ^b]	University Avenue to NE 39 Avenue	2.5	\$3.0
S-6	BRT Corridor Infrastructure- Partial	Santa Fe Village to Gainesville Regional Airport	14.0	\$28.0
7	State Road 24 (Archer Road) BRT Dedicated Lane(S) Design, Additional Roadway Capacity And Corridor Management Study (PD&E)	MTPO Boundary to SW 45 Street	3.5	\$0.5
8	State Road 121 (Williston Road) Additional Roadway Capacity And Corridor Management Study (PD&E)	SW 62 Avenue to SW 35 Way	0.5	\$0.5
Total State Highway System				\$62.5

Table C-2 (Continued)
Year 2035 Roadway Cost Feasible Plan

Priority	Description	From / To	Length (Miles)	Estimated Cost (Millions)
Alachua County Transit and Roadway Projects <i>(local funds identified as Cost Feasible by the Year 2020)</i>				
1	SW 20 Avenue , four laning and multi-use path	SW 52 Blvd to SW 61 Blvd	0.5	\$8.8
2	SW 8 Avenue-Phase 2 , two lane roadway and multi-use path	SW 122 Street to SW 143 Street	0.7	\$2.7
3	NW 23 Avenue , four laning and resurfacing	NW 51 Street to NW 59 Terrace	0.7	\$1.8
4	NW 23 Avenue , four laning	NW 83 Street to Ft. Clarke Blvd.	0.5	\$12.0
5	SE 43 Street , construction of two-way left turn lanes, multi-use path and signalization	SR 26 (University Avenue) to SR 20 (Hawthorne Road)	1.1	\$0.9
6	SW 45 / 47 Street , new roadway with travel lanes, BRT Dedicated Transit Lanes and multi-use path	Archer Road to SW 30 Avenue	0.8	\$4.5
7	SW 30 Avenue , new Interstate 75 overpass with travel lanes, BRT Dedicated Transit Lanes and the Archer Braid Trail	SW 43 Street to SW 47 Street	0.5	\$13.0
8	NW 83 Street , new roadway with travel lanes, BRT Dedicated Transit Lanes and the Millhopper Greenway	NW 46 Avenue to NW 39 Avenue (SR 222)	0.4	\$2.5
9	NW 83 Street BRT Dedicated Transit Lanes	NW 23 Avenue to NW 39 Avenue	1.0	\$7.8
10	Ft. Clarke/NW 83 Street Corridor , BRT Dedicated Transit Lanes & new multi-modal only Interstate 75 overpass	NW 23 Avenue to Newberry Road (SR 26)	1.0	\$14.0

Table C-2 (Continued)
Year 2035 Roadway Cost Feasible Plan

Priority	Description	From / To	Length (Miles)	Estimated Cost (Millions)
11	NW 46 Avenue , new roadway with travel lanes, BRT Dedicated Transit Lanes, multi-use path and new Interstate 75 overpass	NW 83 Street to NW 98 Street	1.3	\$15.5
Total Alachua County Transit and Roadway System				\$83.5
City of Gainesville Projects <i>(local funds identified as Cost Feasible by the Year 2020)</i>				
N/A	SE 4 Street- Phase 2 reconstruction	Williston Road to Depot Avenue	0.7	\$2.3
N/A	SW 62 Boulevard-four lanes plus two additional BRT lanes in the middle	Newberry Road to Archer Road	3.2	\$111.0
Total City of Gainesville Roadway System				\$113.3
Grand Total Combined Roadway Systems				\$265.7

BRT = Bus Rapid Transit; Ft. = Fort; N/A = Not Applicable; NW = Northwest; SE = Southeast
SR = State Road; SW = Southwest

^aMultimodal corridors are defined as major transportation facilities which accommodate automobile, truck, bus, bicycle and pedestrian travel and link different modes together, such as bikes on buses, car and walk and/or park and ride. These projects employ policies and design elements that ensure that the safety and convenience of all users of a transportation system are considered in all phases of project planning and development. Typical elements of a multimodal corridor include sidewalks, bicycle lanes (or wide, paved shoulders), shared-use bicycle and pedestrian paths, designated bus lanes, safe and accessible transit stops and frequent and safe crossings for pedestrians, including median islands, accessible pedestrian signals, and curb extensions. These projects do not include lane reductions.

^bWaldo Road Multiway Boulevard includes the reconstruction of the Waldo Road Corridor to support commercial and residential redevelopment and enhanced pedestrian crossings to the proposed Waldo Road Bus Rapid Transit line.

Note- Estimated costs are shown in Year 2010 dollars, except for the Strategic Intermodal System project that is shown in Year 2009 dollars.

Table C-3
Year 2035 Transit Cost Feasible Plan

Project Priority	Description	From / To	Length (Miles)	Estimated Cost in 2010 Dollars (Millions)
Transit (<i>Cost Feasible Plan Revenues = \$3.7 million</i>)				
T-1	Transit Maintenance Facility	NA	NA	\$50.0
Total				\$50.0
Surface Transportation Program (<i>Cost Feasible Plan Revenues = \$36.1 million</i>)				
F-1	Oaks Mall to Airport Bus Rapid Transit Alternatives Analysis	Oaks Mall to Airport (via Archer Road and Downtown)	NA	\$0.4
F-2	Santa Fe to Oaks Mall Bus Rapid Transit Feasibility Study and Alternatives Analysis	Santa Fe to Oaks Mall	NA	\$0.6
F-3	Streetcar Feasibility Study	Downtown to Butler Plaza via University of Florida	9.0 (One-way)	\$1.0
F-4	Intermodal Center/Park and Ride Lot	(location to be determined)	NA	\$1.4
F-5	Transit Maintenance Facility	NA	NA	\$50.0
Total				\$53.4

NA = Not Applicable

Table C-4
Year 2035 Cost Feasible Plan
Intelligent Transportation System Appendix

Project Priority	Project Name	Description	Estimated Cost (2010 Dollars)
1	<p><u>Interstate 75 Intelligent Transportation System Corridor</u></p> <p>Marion County line to Columbia County Line</p>	<p>A. Add Dynamic Message Signs to alert motorists of traffic conditions and travel times.</p> <p>B. Add pan-tilt-zoom traffic surveillance cameras for active traffic management of the freeway. This will allow operators at the Gainesville Traffic Management Center to alert motorists of existing conditions using the Dynamic Message Signs and the 511 information hotline.</p> <p>C. Add traffic detection technology so automated alerts can be sent to Gainesville Traffic Management Center operators when highway speeds drop below a certain threshold as well as for highway traffic studies and travel time collection.</p>	\$9,900,000
2	<p><u>Regional Transportation System Bus Priority System</u></p> <p>Adding signal priority to heavily used bus routes for University of Florida students will make those routes more reliable, thus resulting in higher passenger capacity and fewer vehicles on the road.</p>	<p>A. <u>Route #9</u> <u>State Road 24 (Archer Road)</u> from SW 23 Terrace to SW 23 Drive <u>State Road 331 (Williston Road)</u> from SW 25 Terrace to SW 23 Street</p> <p>B. <u>Route # 20</u> <u>State Road 121 (SW 34 Street)</u> from Hull Road to SW 20 Avenue</p> <p>C. <u>Route# 21</u> <u>State Road 121 (SW 34 Street)</u> from Hull Road to SW 20 Avenue</p> <p>D. <u>Route #35</u> <u>State Road 24 (Archer Road)</u> from SW 23 Terrace to State Road 226 (SW 2 Avenue) <u>State Road 226 (SW 16 Avenue)</u> from State Road 24 (Archer Road) to Shealy Drive <u>State Road 12 (SW 34th Street)</u> from SW 35 Place to State Road 226 (SW 16 Avenue) <u>State Road 226 (SW 16 Avenue)</u> from State Road 121 (SW 34 Street) to SW 23 Street</p>	\$600,000

Table C-4 (Continued)
Year 2035 Cost Feasible Plan
Intelligent Transportation System Appendix

Project Priority	Project Name	Description	Estimated Cost (2010 Dollars)
3	<p><u>Dynamic Message Signs on State Highway Arterials</u></p> <p>Dynamic message on the arterials will alert drivers of existing traffic conditions, alternate routes, detour routes in the event Interstate 75 is shut down, and travel times.</p>	<p>A. State Road 121 (SW 34 Street) @ SW 20 Avenue (Southbound)</p> <p>B. State Road 121 (SW 34 Street) @ State Road 331 (Eastbound)</p> <p>C. State Road 25 (W 13 Street) @ State Road 26 (W University Avenue)</p> <p>D. State Road 25 (NW 13 Street) @ State Road 222 (NW 39 Avenue) (Westbound)</p> <p>E. State Road 25 (NW 13 Street) @ State Road 222 (NW 39 Avenue) (Northbound)</p> <p>F. State Road 222 (NW 39 Avenue) @ State Road 93 (Eastbound)</p>	\$700,000
4	<p><u>Expand Automated Arterial Travel Time System</u></p> <p>Expanding the Arterial Travel Time System will provide motorists with more real time information via Google maps or Dynamic Message Signs for actual travel times to various spots in the urban area. Motorists may be able to make a different route choice based on the information they receive. The travel times can also be used for traffic studies to measure development related impacts.</p>	<p>A. <u>State Road 25 (NW 13 Avenue)</u> State Road 222 (NW 39 Avenue) to State Road 331 (Williston Road)</p> <p>B. <u>State Road 121 (SW 34 Street)</u> NW 16 Avenue to State Road 93 (Interstate 75) Southbound Ramp</p>	\$600,000

Table C-4 (Continued)
Year 2035 Cost Feasible Plan
Intelligent Transportation System Appendix

Project Priority	Project Name	Description	Estimated Cost (2010 Dollars)
5	<u>Travel Demand Management</u> Information technologies project that addresses travel demand strategies, such as HOV lanes, HOT lanes and other travel demand management technologies.	Gainesville Metropolitan Areawide	(to be determined)
Grand Total Intelligent Transportation System Projects			\$11,800,000

HOT = High Occupancy Toll; HOV = High Occupancy Vehicle; NA = Not Applicable; NW = Northwest
SW = Southwest

Table C-5
Year 2035 Long Range Transportation Plan
Existing Plus Committed Capacity Projects Appendix

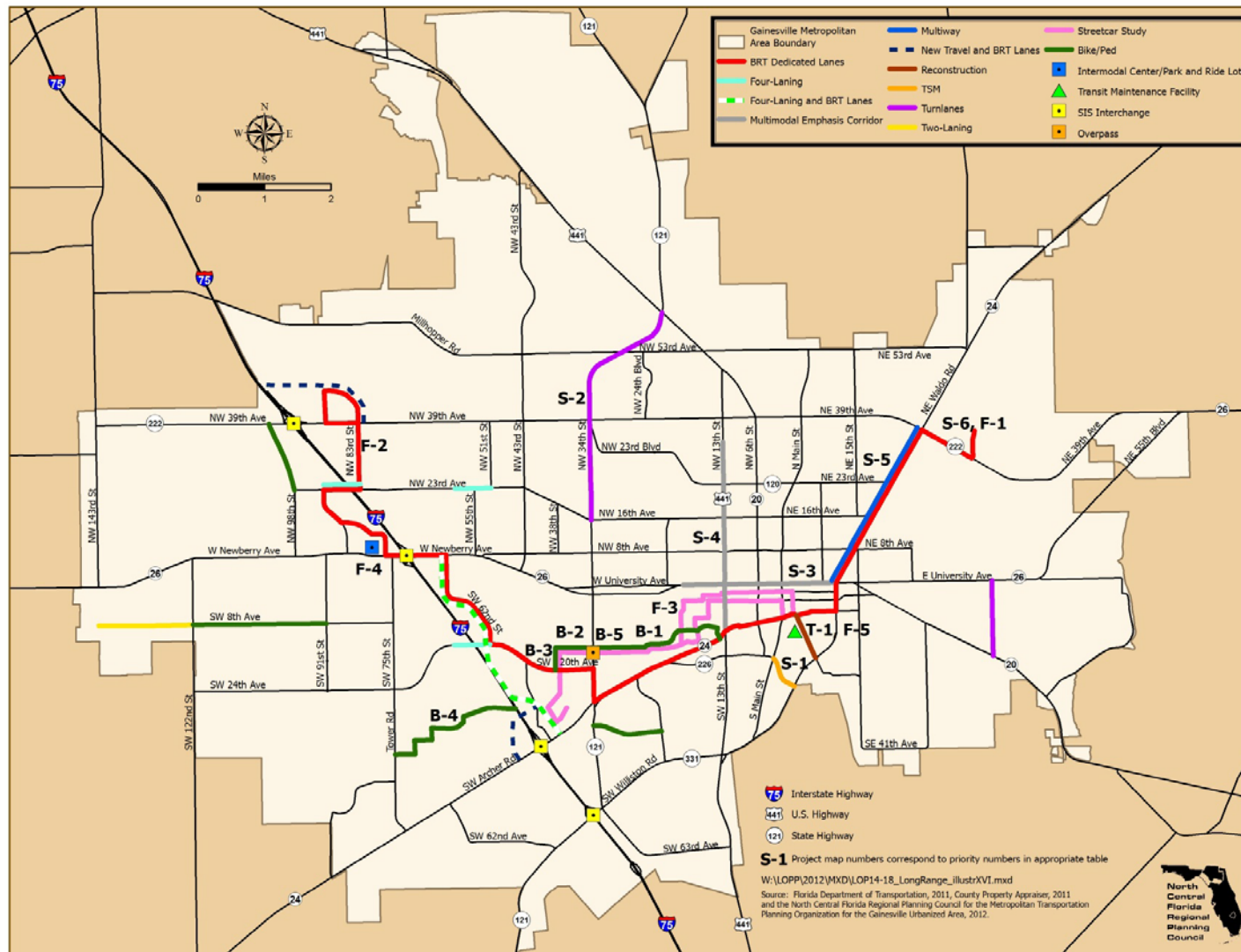
Facility/Location	Type	Fiscal Year	Source
I-75 at SR 26 (W Newberry Road) (SE quadrant of interchange only)	Interchange Modification/Operational Improvement	2011	FDOT WP
SE 4 Street from Williston Road to Depot Avenue- Phase 1	Reconstruction- Design & Right-of- Way	2014	MTPO - TIP
SW 8 Avenue to SW 20 Avenue: Connection of SW 8 Avenue to SW 61 Street	New Road Connection - SW 8 Ave to SW 61 St	2012	MTPO - TIP
SW 8 Ave from SW 122 Street to SW 143 Street- Phase 1	New Roadways/2 lane reconstruction	2015	Alachua County CIP
SR 121 (NW 34 Street/NW 22 Street) from NW 58 Avenue to NW 67 Place	4-laning	2015	City of Gainesville
SR 226 (SE 16 Avenue) from Main Street to Williston Road	4-laning- Preliminary Engineering	2013	MTPO - TIP
SR 329 (Main Street) from Depot Avenue to NW 8 Avenue	Road Diet - Resurface/Reduce from 4 lanes to 2 lanes with center turn lane	under construction	FDOT WP
SR 329 (Main Street) from NW 8 Ave to NW 16 Avenue	Road Diet - Resurface/Reduce from 4 lanes to 2 lanes with center turn lane	under construction	Alachua County budget
SW 40 Boulevard Extension to SW 47 Avenue	New 2-lane roadway	2014	City of Gainesville CIP
Depot Avenue from US 441/SR 25/SW 13 Street to Williston Road	Reconstruction	2012	FDOT WP; City of Gainesville CIP

Table C-5 (Continued)
Year 2035 Long Range Transportation Plan
Existing Plus Committed Capacity Projects Appendix

Facility/Location	Type	Fiscal Year	Source
SW 6 Street from SW 4 Avenue to University Avenue	Reconstruction	2012	City of Gainesville CIP

CIP = Capital Improvements Program; FDOT = Florida Department of Transportation; NW = Northwest;
SE = Southeast; SR = State Road; SW = Southwest; TIP = Transportation Improvement Program
US = United States; WP = Work Program
MTPO = Metropolitan Transportation Organization for the Gainesville Urbanized Area

Illustration XV
Year 2035 Long Range Transportation Plan Cost Feasible Priority Ranking of Projects
Adopted October 27, 2010



THIS PAGE LEFT BLANK INTENTIONALLY

Appendix D

Regional Transit System

Supplemental Information

THIS PAGE LEFT BLANK INTENTIONALLY

Appendix D: Regional Transit System Supplemental Information

Table D-1 provides supplemental project descriptions from the Regional Transit System Transit Development Plan for project priorities No. 4 and No. 5 of Table 6 of the List of Priority projects. This supplemental information is provided at the request of the Regional Transit System.

THIS PAGE LEFT BLANK INTENTIONALLY

Table D-1
Fiscal Years 2014-15 to 2018-19
Public Transportation Priorities Supplemental Information
Priority 4 and 5 Projects

Project	Location	Description
Priority 4 New Transit Routes		
Enhance bus service via Fort Clarke Boulevard	RTS Route 23	Implement new route to provide service from the Oaks Mall to SFC
Enhance bus service from Urban Core to Airport Area	RTS Route 25	Implement new route to provide service from the University of Florida to the Airport Area
Enhance bus service via W 62 Boulevard and N 23 Avenue	RTS Route 62	Implement new route to provide service from Oaks Mall to Butler Plaza
Enhance bus service within Urban Core	RTS Route 46	Implement new circulator route to provide service between downtown and the University of Florida
Enhance bus service via N 39 Avenue	RTS Route 39	Implement new route to provide service from Spring Hill Development to Gainesville Regional Airport
Enhance bus service for southwest and northwest areas	RTS Route 44	Implement new route to provide service from Shands to Hunters Crossing
Priority 5 Existing Route Service Enhancements		
Enhance bus service via N 23 Avenue	RTS Route 10	Increase fixed-route service to 40 minutes
Enhance bus service via W 43 Street	RTS Route 43	Increase fixed-route service to 30 minutes
Enhance bus service via Archer Road	RTS Routes 1, 8 & 11	Extend fixed-route hours to 11:00 pm
Enhance bus service for southeast and northwest areas	RTS Routes 6 & 11	Increase fixed-route service to 30 minutes
Enhance bus service for southeast and northeast areas	RTS Routes 2 & 24	Increase fixed-route service to 30 minutes
Enhance Saturday service	RTS Routes 14, 75, 400, 402, 403, 404, 405, 406, 409 & 410	Extend fixed-route service to 7:58 pm
Enhance bus service via Archer Road and Tower Road	RTS Route 75	Increase fixed-route service to 35 minutes; extend Saturday fixed-route service to 7:58 pm; add Sunday fixed-route service; and increase weekend fixed-route service to 45 minutes
Enhance bus service for southeast area	RTS Route 7	Increase fixed-route service to 30 minutes
Enhance Sunday service	RTS Route 410	Add Sunday fixed-route service

N = North
SFC = Santa Fe College

RTS = Regional Transit System
W = West

THIS PAGE LEFT BLANK INTENTIONALLY

Appendix E Safety Project Supplemental Material

THIS PAGE LEFT BLANK INTENTIONALLY

Appendix E: Safety Projects Supplemental Material

There is not any Safety Project Supplemental Material in Year 2013.

THIS PAGE LEFT BLANK INTENTIONALLY

Appendix F

Federal Funds Obligation

Project List

Fiscal Year 2011-12

(10/1/11 to 9/30/12)

THIS PAGE LEFT BLANK INTENTIONALLY

Appendix F: Federal Funds Obligation Project List, Fiscal Year 2011-12 (10/1/11 to (9/30/12)

The Federal Funds Obligation Project List is included in this List of Priority Projects document at the request of the Florida Department of Transportation.

THIS PAGE LEFT BLANK INTENTIONALLY

Metropolitan Transportation Planning Organization for the Gainesville Urbanized Area
List of Priority Projects Fiscal Years 2014-15 to 2018-19

PAGE 1
 GAINESVILLE MTPO

FLORIDA DEPARTMENT OF TRANSPORTATION
 OFFICE OF WORK PROGRAM
 ANNUAL OBLIGATIONS REPORT

 HIGHWAYS

DATE RUN: 10/03/2012
 TIME RUN: 07.06.34
 MBROBLTP

ITEM NUMBER: 207837 4 PROJECT DESCRIPTION: SR24/ARCHER RD TRAIL FROM: CITY OF ARCHER TO: SW 91ST STREET
 DISTRICT: 02 COUNTY: ALACHUA
 ROADWAY ID: 26090000 PROJECT LENGTH: 6.037MI

NON-SIS
 TYPE OF WORK: BIKE PATH/TRAIL
 LANES EXIST/IMPROVED/ADDED: 2/ 0/ 0

FUND
 CODE

2012

FEDERAL PROJECT NUMBER: 3761 039 P

PHASE: CONSTRUCTION / RESPONSIBLE AGENCY: MANAGED BY FDOT
 SE

1,047,040

TOTAL 3761 039 P
 TOTAL 207837 4

1,047,040
 1,047,040

ITEM NUMBER: 211363 2 PROJECT DESCRIPTION: W. 6TH ST. RAIL CORR. FR: SW 2ND AVE. TO NW 10TH AVE
 DISTRICT: 02 COUNTY: ALACHUA
 ROADWAY ID: 26000001 PROJECT LENGTH: .792MI

NON-SIS
 TYPE OF WORK: BIKE PATH/TRAIL
 LANES EXIST/IMPROVED/ADDED: 2/ 0/ 0

FUND
 CODE

2012

FEDERAL PROJECT NUMBER: 8887 724 A

PHASE: CONSTRUCTION / RESPONSIBLE AGENCY: MANAGED BY FDOT

EB
 SA
 SE

100
 0

TOTAL 8887 724 A
 TOTAL 211363 2

3,924
 4,024
 4,024

ITEM NUMBER: 211365 3 PROJECT DESCRIPTION: SW 62ND BLVD. 4-LANE ARTERIAL CONNECTOR
 DISTRICT: 02 COUNTY: ALACHUA
 ROADWAY ID: 26000094 PROJECT LENGTH: 1.516MI

NON-SIS
 TYPE OF WORK: PRELIMINARY ENGINEERING
 LANES EXIST/IMPROVED/ADDED: 4/ 0/ 0

FUND
 CODE

2012

FEDERAL PROJECT NUMBER: S124 002 R

PHASE: PRELIMINARY ENGINEERING / RESPONSIBLE AGENCY: MANAGED BY ALACHUA COUNTY BOCC
 HPP

35,000

PHASE: PRELIMINARY ENGINEERING / RESPONSIBLE AGENCY: MANAGED BY FDOT

EB

1,301

TOTAL S124 002 R
 TOTAL 211365 3

36,301
 36,301

ITEM NUMBER: 212949 8 PROJECT DESCRIPTION: I-75 OPERATIONAL IMPROVEMENT @ SR26
 DISTRICT: 02 COUNTY: ALACHUA
 ROADWAY ID: 26260000 PROJECT LENGTH: .494MI

SIS
 TYPE OF WORK: INTERCHANGE IMPROVEMENT
 LANES EXIST/IMPROVED/ADDED: 0/ 0/ 0

FUND
 CODE

2012

FEDERAL PROJECT NUMBER: 0752 146 I

PHASE: CONSTRUCTION / RESPONSIBLE AGENCY: MANAGED BY FDOT
 HSP

594,587

NH

231,080

TOTAL 0752 146 I
 TOTAL 212949 8

825,667
 825,667

Metropolitan Transportation Planning Organization for the Gainesville Urbanized Area
List of Priority Projects Fiscal Years 2014-15 to 2018-19

PAGE 2

GAINESVILLE MTPO

FLORIDA DEPARTMENT OF TRANSPORTATION
OFFICE OF WORK PROGRAM
ANNUAL OBLIGATIONS REPORT

HIGHWAYS

DATE RUN: 10/03/2012
TIME RUN: 07.06.34
MBROBLTP

ITEM NUMBER: 404628 1	PROJECT DESCRIPTION: OLD GAINESVILLE DEPOT REHABILITATION	*NON-SIS*
DISTRICT: 02	COUNTY: ALACHUA	TYPE OF WORK: MISCELLANEOUS CONSTRUCTION
ROADWAY ID: 26000000	PROJECT LENGTH: 99.000MI	LANES EXIST/IMPROVED/ADDED: 0/ 0/ 0

FUND
CODE

2012

FEDERAL PROJECT NUMBER: 4220 020 C

PHASE: CONSTRUCTION / RESPONSIBLE AGENCY: MANAGED BY FDOT

TOTAL 4220 020 C	882
TOTAL 404628 1	882

ITEM NUMBER: 420537 1	PROJECT DESCRIPTION: DEPOT AVE/SW 9TH RD. FROM US 441/SW 13TH ST TO SR 331/WILLISTON RD	*NON-SIS*
DISTRICT: 02	COUNTY: ALACHUA	TYPE OF WORK: FLEXIBLE PAVEMENT RECONSTRUCT.
ROADWAY ID: 26090500	PROJECT LENGTH: 1.746MI	LANES EXIST/IMPROVED/ADDED: 2/ 2/ 0

FUND
CODE

2012

FEDERAL PROJECT NUMBER: SFTL 238 R

PHASE: PRELIMINARY ENGINEERING / RESPONSIBLE AGENCY: MANAGED BY FDOT

TOTAL SFTL 238 R	9,981
TOTAL 420537 1	9,981

ITEM NUMBER: 420537 3	PROJECT DESCRIPTION: DEPOT AVE/SW 9TH RD FROM SR 25/US441/SW 13 ST TO SR 329/MAIN STREET	*NON-SIS*
DISTRICT: 02	COUNTY: ALACHUA	TYPE OF WORK: RIGHT OF WAY ACQUISITION
ROADWAY ID:	PROJECT LENGTH: .000	LANES EXIST/IMPROVED/ADDED: 0/ 0/ 0

FUND
CODE

2012

FEDERAL PROJECT NUMBER: SFT1 238 R

PHASE: RIGHT OF WAY / RESPONSIBLE AGENCY: MANAGED BY FDOT

TOTAL SFT1 238 R	184,000
TOTAL 420537 3	1,525,402
	1,709,402
	1,709,402

ITEM NUMBER: 423071 1	PROJECT DESCRIPTION: I-75 (SR 93) AT SR 222 (39TH AVENUE)	*SIS*
DISTRICT: 02	COUNTY: ALACHUA	TYPE OF WORK: INTERCHANGE IMPROVEMENT
ROADWAY ID: 26260000	PROJECT LENGTH: 1.360MI	LANES EXIST/IMPROVED/ADDED: 6/ 6/ 0

FUND
CODE

2012

FEDERAL PROJECT NUMBER: 0752 153 I

PHASE: PRELIMINARY ENGINEERING / RESPONSIBLE AGENCY: MANAGED BY FDOT

TOTAL 0752 153 I	100,000
TOTAL 423071 1	100,000
	100,000

Metropolitan Transportation Planning Organization for the Gainesville Urbanized Area
List of Priority Projects Fiscal Years 2014-15 to 2018-19

PAGE 3
 GAINESVILLE MTPO

FLORIDA DEPARTMENT OF TRANSPORTATION
 OFFICE OF WORK PROGRAM
 ANNUAL OBLIGATIONS REPORT

HIGHWAYS

DATE RUN: 10/03/2012
 TIME RUN: 07.06.34
 MBROBLTP

ITEM NUMBER:423396 1 PROJECT DESCRIPTION:SR 24 FROM LEVY C/L TO SR 45
 DISTRICT:02 COUNTY:ALACHUA
 ROADWAY ID:26090000 PROJECT LENGTH: 2.762MI
 TYPE OF WORK:RESURFACING *NON-SIS*
 LANES EXIST/IMPROVED/ADDED: 2/ 2/ 0

FUND
 CODE

2012

FEDERAL PROJECT NUMBER: 3761 042 P

PHASE: CONSTRUCTION / RESPONSIBLE AGENCY: MANAGED BY FDOT

SA	940,635
TOTAL 3761 042 P	940,635
TOTAL 423396 1	940,635

ITEM NUMBER:423608 2 PROJECT DESCRIPTION:SR 226 (SE 16TH AVE) AT MAIN ST AT SR 331 (WILLISTON RD)
 DISTRICT:02 COUNTY:ALACHUA
 ROADWAY ID:26004000 PROJECT LENGTH: .550MI
 TYPE OF WORK:INTERSECTION IMPROVEMENT *NON-SIS*
 LANES EXIST/IMPROVED/ADDED: 2/ 2/ 0

FUND
 CODE

2012

FEDERAL PROJECT NUMBER: 8887 725 A

PHASE: PRELIMINARY ENGINEERING / RESPONSIBLE AGENCY: MANAGED BY FDOT

SA	0
TOTAL 8887 725 A	0
TOTAL 423608 2	0

ITEM NUMBER:424473 1 PROJECT DESCRIPTION:SR 20 FROM SE 55TH BLVD. TO SE CR 325
 DISTRICT:02 COUNTY:ALACHUA
 ROADWAY ID:26080000 PROJECT LENGTH: 5.435MI
 TYPE OF WORK:RESURFACING *SIS*
 LANES EXIST/IMPROVED/ADDED: 2/ 2/ 0

FUND
 CODE

2012

FEDERAL PROJECT NUMBER: 4226 038 P

PHASE: CONSTRUCTION / RESPONSIBLE AGENCY: MANAGED BY FDOT

SL	3,311,370
TOTAL 4226 038 P	3,311,370
TOTAL 424473 1	3,311,370

ITEM NUMBER:424632 1 PROJECT DESCRIPTION:I-75 (SR 93) FRONTAGE ROAD FROM US 441 TO 1.5 MILES NORTH
 DISTRICT:02 COUNTY:ALACHUA
 ROADWAY ID:26260058 PROJECT LENGTH: 1.550MI
 TYPE OF WORK:RESURFACING *SIS*
 LANES EXIST/IMPROVED/ADDED: 2/ 2/ 0

FUND
 CODE

2012

FEDERAL PROJECT NUMBER: 0752 144 I

PHASE: PRELIMINARY ENGINEERING / RESPONSIBLE AGENCY: MANAGED BY FDOT

IMAC	4,000
TOTAL 0752 144 I	4,000
TOTAL 424632 1	4,000

Metropolitan Transportation Planning Organization for the Gainesville Urbanized Area
List of Priority Projects Fiscal Years 2014-15 to 2018-19

PAGE 4
 GAINESVILLE MTPO

FLORIDA DEPARTMENT OF TRANSPORTATION
 OFFICE OF WORK PROGRAM
 ANNUAL OBLIGATIONS REPORT

DATE RUN: 10/03/2012
 TIME RUN: 07.06.34
 MBROBLTP

 HIGHWAYS

ITEM NUMBER:424685 1
 DISTRICT:02
 ROADWAY ID:26260000

PROJECT DESCRIPTION:I-75 (SR 93) AT US 441 OPERATIONAL IMPROVEMENTS
 COUNTY:ALACHUA
 PROJECT LENGTH: .167MI

SIS
 TYPE OF WORK:INTERCHANGE IMPROVEMENT
 LANES EXIST/IMPROVED/ADDED: 0/ 0/ 0

FUND
 CODE

2012

FEDERAL PROJECT NUMBER: 0752 147 I

PHASE: PRELIMINARY ENGINEERING / RESPONSIBLE AGENCY: MANAGED BY FDOT

EB
 SA

68,539
 287,333
355,872

TOTAL 0752 147 I

FEDERAL PROJECT NUMBER: 0752 152 I

PHASE: RIGHT OF WAY / RESPONSIBLE AGENCY: MANAGED BY FDOT

ACNH

0

TOTAL 0752 152 I
TOTAL 424685 1

0
355,872

ITEM NUMBER:425280 1
 DISTRICT:02
 ROADWAY ID:26130002

PROJECT DESCRIPTION:SR 26/ORANGE HEIGHTS -REBUILD RAILROAD CROSSING #624994-U
 COUNTY:ALACHUA
 PROJECT LENGTH: .976MI

NON-SIS
 TYPE OF WORK:RAILROAD CROSSING
 LANES EXIST/IMPROVED/ADDED: 2/ 0/ 0

FUND
 CODE

2012

FEDERAL PROJECT NUMBER: 4121 012 P

PHASE: RAILROAD AND UTILITIES / RESPONSIBLE AGENCY: MANAGED BY FDOT

EB

55,000
55,000
55,000

TOTAL 4121 012 P
TOTAL 425280 1

ITEM NUMBER:427215 1
 DISTRICT:02
 ROADWAY ID:26060000

PROJECT DESCRIPTION:SR 200 (US 301) @ HAWTHORNE - REBUILD RR CROSSING #627443-W
 COUNTY:ALACHUA
 PROJECT LENGTH: .100MI

SIS
 TYPE OF WORK:RAILROAD CROSSING
 LANES EXIST/IMPROVED/ADDED: 4/ 0/ 0

FUND
 CODE

2012

FEDERAL PROJECT NUMBER: 3114 033 P

PHASE: RAILROAD AND UTILITIES / RESPONSIBLE AGENCY: MANAGED BY FDOT

SA

0
 0
0

TOTAL 3114 033 P
TOTAL 427215 1

ITEM NUMBER:427327 1
 DISTRICT:02
 ROADWAY ID:26000000

PROJECT DESCRIPTION:NE 19TH PL FROM NE 9TH ST TO NE 15TH ST
 COUNTY:ALACHUA
 PROJECT LENGTH: .530MI

NON-SIS
 TYPE OF WORK:SIDEWALK
 LANES EXIST/IMPROVED/ADDED: 0/ 0/ 0

FUND
 CODE

2012

FEDERAL PROJECT NUMBER: SRTS 170 A

PHASE: PRELIMINARY ENGINEERING / RESPONSIBLE AGENCY: MANAGED BY FDOT

SL

0
 0
0

TOTAL SRTS 170 A
TOTAL 427327 1

Metropolitan Transportation Planning Organization for the Gainesville Urbanized Area
List of Priority Projects Fiscal Years 2014-15 to 2018-19

PAGE 5

GAINESVILLE MTPO

FLORIDA DEPARTMENT OF TRANSPORTATION
OFFICE OF WORK PROGRAM
ANNUAL OBLIGATIONS REPORT

DATE RUN: 10/03/2012
TIME RUN: 07.06.34
MBROBLTP

HIGHWAYS

ITEM NUMBER:428802 1
DISTRICT:02
ROADWAY ID:26260000

PROJECT DESCRIPTION:I-75 (SR 93) FROM N. OF SR25/US441 TO SANTA FE RIVER
COUNTY:ALACHUA
PROJECT LENGTH: 8.750MI

SIS
TYPE OF WORK:RESURFACING
LANES EXIST/IMPROVED/ADDED: 6/ 6/ 0

FUND
CODE

2012

FEDERAL PROJECT NUMBER: 0752 150 I

PHASE: PRELIMINARY ENGINEERING / RESPONSIBLE AGENCY: MANAGED BY FDOT
ACIM
TOTAL 0752 150 I
TOTAL 428802 1

102,148
102,148
102,148

ITEM NUMBER:428803 1
DISTRICT:02
ROADWAY ID:26260000

PROJECT DESCRIPTION:I-75 (SR 93) FROM S. OF SR 222 TO N. OF SR 25/US 441
COUNTY:ALACHUA
PROJECT LENGTH: 9.757MI

SIS
TYPE OF WORK:RESURFACING
LANES EXIST/IMPROVED/ADDED: 6/ 6/ 0

FUND
CODE

2012

FEDERAL PROJECT NUMBER: 0752 151 I

PHASE: PRELIMINARY ENGINEERING / RESPONSIBLE AGENCY: MANAGED BY FDOT
ACIM
TOTAL 0752 151 I
TOTAL 428803 1

98,667
98,667
98,667

ITEM NUMBER:428894 1
DISTRICT:02
ROADWAY ID:

PROJECT DESCRIPTION:NEWBERRY BIKE/PED VARIOUS TRAIL CONNECTIONS TO TRAILHEADS & SCHOOLS
COUNTY:ALACHUA
PROJECT LENGTH: .000

NON-SIS
TYPE OF WORK:BIKE LANE/SIDEWALK
LANES EXIST/IMPROVED/ADDED: 0/ 0/ 0

FUND
CODE

2012

FEDERAL PROJECT NUMBER: 8887 929 A

PHASE: PRELIMINARY ENGINEERING / RESPONSIBLE AGENCY: MANAGED BY FDOT
EB
SE
TOTAL 8887 929 A

83,996
12,147
96,143

FEDERAL PROJECT NUMBER: 8887 967 A

PHASE: RAILROAD AND UTILITIES / RESPONSIBLE AGENCY: MANAGED BY FDOT
SE

650,000

PHASE: CONSTRUCTION / RESPONSIBLE AGENCY: MANAGED BY FDOT
EB

12,108
662,108
758,251

TOTAL 8887 967 A
TOTAL 428894 1

ITEM NUMBER:428895 1
DISTRICT:02
ROADWAY ID:26000095

PROJECT DESCRIPTION:SW 8TH AVE FROM SW 122ND STREET TO SW 91ST STREET
COUNTY:ALACHUA
PROJECT LENGTH: 2.007MI

NON-SIS
TYPE OF WORK:BIKE LANE/SIDEWALK
LANES EXIST/IMPROVED/ADDED: 2/ 0/ 0

FUND
CODE

2012

FEDERAL PROJECT NUMBER: 8886 116 A

PHASE: PRELIMINARY ENGINEERING / RESPONSIBLE AGENCY: MANAGED BY ALACHUA COUNTY BOARD OF COUNTY
SE

0

Metropolitan Transportation Planning Organization for the Gainesville Urbanized Area
List of Priority Projects Fiscal Years 2014-15 to 2018-19

PAGE 6
 GAINESVILLE MTPO

FLORIDA DEPARTMENT OF TRANSPORTATION
 OFFICE OF WORK PROGRAM
 ANNUAL OBLIGATIONS REPORT

HIGHWAYS

DATE RUN: 10/03/2012
 TIME RUN: 07.06.34
 MBROBLTP

PHASE: PRELIMINARY ENGINEERING / RESPONSIBLE AGENCY: MANAGED BY FDOT
 SA
TOTAL 8886 116 A
TOTAL 428895 1

0
 0
 0

ITEM NUMBER: 428896 1 PROJECT DESCRIPTION: UF CAMPUS GREENWAY FROM SR 121 (SW 34TH ST) TO GALE LEMERAND DR.
 DISTRICT: 02 COUNTY: ALACHUA
 ROADWAY ID: PROJECT LENGTH: .000

NON-SIS
 TYPE OF WORK: BIKE LANE/SIDEWALK
 LANES EXIST/IMPROVED/ADDED: 0/ 0/ 0

FUND
 CODE

2012

FEDERAL PROJECT NUMBER: 3311 040 P

PHASE: PRELIMINARY ENGINEERING / RESPONSIBLE AGENCY: MANAGED BY FDOT
 EB
 SE
TOTAL 3311 040 P
TOTAL 428896 1

0
 0
 0
 0

ITEM NUMBER: 429029 1 PROJECT DESCRIPTION: ARCHER BRAID TRAIL FROM SR 24 (ARCHER RD) TO KANAPAH PARK
 DISTRICT: 02 COUNTY: ALACHUA
 ROADWAY ID: 26544000 PROJECT LENGTH: 3.457MI

NON-SIS
 TYPE OF WORK: BIKE PATH/TRAIL
 LANES EXIST/IMPROVED/ADDED: 2/ 0/ 0

FUND
 CODE

2012

FEDERAL PROJECT NUMBER: 3761 040 P

PHASE: PRELIMINARY ENGINEERING / RESPONSIBLE AGENCY: MANAGED BY FDOT
 EB
TOTAL 3761 040 P
TOTAL 429029 1

1,000
 1,000
 1,000

ITEM NUMBER: 429211 1 PROJECT DESCRIPTION: JOHNSON STREET AT 71ST AVE IN HAWTHORNE RAILROAD X-ING #625013-E
 DISTRICT: 02 COUNTY: ALACHUA
 ROADWAY ID: PROJECT LENGTH: .000

NON-SIS
 TYPE OF WORK: RAIL SAFETY PROJECT
 LANES EXIST/IMPROVED/ADDED: 0/ 0/ 0

FUND
 CODE

2012

FEDERAL PROJECT NUMBER: 00S2 049 J

PHASE: RAILROAD AND UTILITIES / RESPONSIBLE AGENCY: MANAGED BY FDOT
 RHH
TOTAL 00S2 049 J
TOTAL 429211 1

149,900
 149,900
 149,900

ITEM NUMBER: 429212 1 PROJECT DESCRIPTION: CR 235A NEAR CR 235 IN ALACHUA INSTALL LED LIGHTS CROSSING #625878-J
 DISTRICT: 02 COUNTY: ALACHUA
 ROADWAY ID: PROJECT LENGTH: .000

NON-SIS
 TYPE OF WORK: RAIL SAFETY PROJECT
 LANES EXIST/IMPROVED/ADDED: 0/ 0/ 0

FUND
 CODE

2012

FEDERAL PROJECT NUMBER: 00S2 049 J

PHASE: RAILROAD AND UTILITIES / RESPONSIBLE AGENCY: MANAGED BY FDOT
 RHH
TOTAL 00S2 049 J
TOTAL 429212 1

31,000
 31,000
 31,000

Metropolitan Transportation Planning Organization for the Gainesville Urbanized Area
List of Priority Projects Fiscal Years 2014-15 to 2018-19

PAGE 7

GAINESVILLE MTPO

FLORIDA DEPARTMENT OF TRANSPORTATION
OFFICE OF WORK PROGRAM
ANNUAL OBLIGATIONS REPORT

HIGHWAYS

DATE RUN: 10/03/2012
TIME RUN: 07.06.34
MBROBLTP

ITEM NUMBER:430062 1
DISTRICT:02
ROADWAY ID:26000000

PROJECT DESCRIPTION:SW 30TH AVENUE RAIL CROSSING OVER FLORIDA NORTHERN RR
COUNTY:ALACHUA
PROJECT LENGTH: .001MI

NON-SIS
TYPE OF WORK:RAILROAD CROSSING
LANES EXIST/IMPROVED/ADDED: 0/ 0/ 0

FUND
CODE

2012

FEDERAL PROJECT NUMBER: 8887 930 A

PHASE: RAILROAD AND UTILITIES / RESPONSIBLE AGENCY: MANAGED BY FDOT
SN

TOTAL 8887 930 A
TOTAL 430062 1

72,159
72,159
72,159

ITEM NUMBER:430614 1
DISTRICT:02
ROADWAY ID:26000000

PROJECT DESCRIPTION:UF CAMPUS GREENWAY FROM GALE LEMBRAND DR TO SR 24 (ARCHER RD)
COUNTY:ALACHUA
PROJECT LENGTH: 1.000MI

NON-SIS
TYPE OF WORK:BIKE LANE/SIDEWALK
LANES EXIST/IMPROVED/ADDED: 0/ 0/ 0

FUND
CODE

2012

FEDERAL PROJECT NUMBER: 8886 117 A

PHASE: PRELIMINARY ENGINEERING / RESPONSIBLE AGENCY: MANAGED BY FDOT

EB
SE
TOTAL 8886 117 A
TOTAL 430614 1
TOTAL DIST: 02
TOTAL HIGHWAYS

0
0
0
0
9,613,299
9,613,299

Metropolitan Transportation Planning Organization for the Gainesville Urbanized Area
List of Priority Projects Fiscal Years 2014-15 to 2018-19

PAGE 8

GAINESVILLE MTPO

FLORIDA DEPARTMENT OF TRANSPORTATION
OFFICE OF WORK PROGRAM
ANNUAL OBLIGATIONS REPORT

PLANNING

DATE RUN: 10/03/2012
TIME RUN: 07.06.34
MBROBLTP

ITEM NUMBER: 214094 9
DISTRICT: 02
ROADWAY ID:

PROJECT DESCRIPTION: GAINESVILLE UFWP/PL FY 2010/2011 & 2011/2012
COUNTY: ALACHUA
PROJECT LENGTH: .000

NON-SIS
TYPE OF WORK: TRANSPORTATION PLANNING
LANES EXIST/IMPROVED/ADDED: 0/ 0/ 0

FUND
CODE

2012

FEDERAL PROJECT NUMBER: 0241 048 M

PHASE: PRELIMINARY ENGINEERING / RESPONSIBLE AGENCY: RESPONSIBLE AGENCY NOT AVAILABLE

PL	220,540
TOTAL 0241 048 M	220,540
TOTAL 214094 9	220,540

ITEM NUMBER: 422186 2
DISTRICT: 02
ROADWAY ID:

PROJECT DESCRIPTION: GAINESVILLE UFWP/PL FY 2012/2013 & 2013/2014
COUNTY: ALACHUA
PROJECT LENGTH: .000

NON-SIS
TYPE OF WORK: TRANSPORTATION PLANNING
LANES EXIST/IMPROVED/ADDED: 0/ 0/ 0

FUND
CODE

2012

FEDERAL PROJECT NUMBER: 0241 049 M

PHASE: PRELIMINARY ENGINEERING / RESPONSIBLE AGENCY: RESPONSIBLE AGENCY NOT AVAILABLE

PL	146,003
TOTAL 0241 049 M	146,003
TOTAL 422186 2	146,003
TOTAL DIST: 02	366,543
TOTAL PLANNING	366,543

GRAND TOTAL	9,979,842
-------------	-----------

Appendix G

Supplemental Surface Transportation Program Fund- Eligible Projects

THIS PAGE LEFT BLANK INTENTIONALLY

Appendix G: Supplemental Surface Transportation Program Fund-Eligible Projects

Table G-1
Alachua County and City of Gainesville
Nonprioritized Surface Transportation Program
Fund-Eligible Projects

Project	Location	Description
Archer Road	FM: SW 91 Street TO: SW 75 Street	Reconstruct as a 4-lane divided facility
County Road 225	AT: NE 53 Avenue	Reconstruct intersection and signalize
Lake Shore Drive / County Road 329B	FM: Hawthorne Road TO: State Road 26	Mill and resurface; add paved shoulders and turnbays
North Main Street	FM: N 39 Avenue TO: N 53 Avenue	Mill and resurface
NE 8 Avenue	FM: N Main Street TO: NE Boulevard	Mill and resurface
Rocky Point Road	FM: Williston Road TO: SW 13 Street	Reconstruct with wider lanes, paved shoulders, turnbays; mill and resurface existing pavement
SE 4 Street	FM: Williston Road TO: Depot Avenue	Mill and resurface
SE 16 Avenue	FM: Main Street TO: Williston Road	Reconstruct as a 4-lane divided facility
State Roads 26/26A	FM: NW 38 Street TO: Gale Lemerand Drive	Implement one-way pair configuration
SW 8 Avenue	FM: SW 122 Street TO: Tower Road	Resurface/reconstruct; add paved shoulders and sidewalk on one side
SW 20 Avenue	AT: SW 34 Street	Construct grade-separated crossing
SW 35 Place	FM: SW 34 Street TO: SW 23 Terrace	Mill and resurface
SW 62 Boulevard	FM: SW 20 Avenue TO: Newberry Road	Mill and resurface
SW 91 Street	FM: SW 24 Avenue TO: Newberry Road	Mill and resurface; add paved shoulders

FM = From; N = North; NE = Northeast; SE = Southeast; SW = Southwest

t:\mike\tp\priorities\lop1318\lopp13dftms2sd.docx

THIS PAGE LEFT BLANK INTENTIONALLY

Metropolitan Transportation Planning Organization for the Gainesville Urbanized Area

List of Priority Projects Team

Scott R. Koons, AICP, Executive Director

Marlie Sanderson, AICP, Director of Transportation Planning

** Steven Dopp, Senior Planner

* Michael Escalante, AICP, Senior Planner

** Michael DePalma, Associate Planner

** Kevin Parrish, Information Technology and Property Management Director

** Carol Laine, Executive Assistant to the Executive Director

* Primary Responsibility
** Secondary Responsibility



Use the QR Reader App
on your smart phone to
visit our website!

Metropolitan Transportation Planning Organization for the Gainesville Urbanized Area

2009 NW 67th Place
Gainesville, FL 32653-1603
352.955.2200

www.ncfrpc.org/mtpo