



Serving

Alachua • Bradford

Columbia • Dixie • Gilchrist

Hamilton • Lafayette • Madison

Suwannee • Taylor • Union Counties

2009 NW 67th Place, Gainesville, FL 32653-1603 • 352.955.2200

November 20, 2012

TO: Citizens and Technical Advisory Committees

FROM: Marlie Sanderson, Director of Transportation Planning

SUBJECT: Meeting Announcement and Agenda

On Wednesday, November 28, 2012, the Technical Advisory Committee will meet at 2:00 p.m. in the **Gainesville Regional Utilities (GRU) General Purpose Meeting Room, 301 SE 4th Avenue**. Also on Wednesday, November 28, 2012, the Citizens Advisory Committee will meet at 7:00 p.m. in the **Grace Knight Conference Room, Alachua County Administration Building 12 SE 1st Street**. Times shown on this agenda are for the Citizens Advisory Committee meeting.

STAFF RECOMMENDATION

- | | | | |
|---|------|---|---------------------------------|
| 7:00 p.m. | I. | Introductions (if needed)* | |
| | II. | Approval of Meeting Agenda | APPROVE AGENDA |
| Page #3
7:05 p.m. | III. | Approval of Committee Minutes | APPROVE MINUTES |
| Page #11
7:10 p.m. | IV. | Florida Department of Transportation (FDOT)
Tentative Five Year Work Program | APPROVE STAFF
RECOMMENDATION |
| <u>The purpose of this agenda item is to decide if the MTPO should request changes to the draft Tentative Work Program.</u> | | | |
| Page #19
7:30 p.m. | V. | MTPO Planning Boundary and Voting Membership | DEVELOP MTPO
RECOMMENDATION |
| <u>The MTPO must submit a letter to FDOT by February 1, 2013 stating if it wants to keep its current planning boundary and voting membership or make changes.</u> | | | |
| Page #27
7:40 p.m. | VI. | South Main Street- Scoping Plans | APPROVE STAFF
RECOMMENDATION |
| <u>Enclosed are scoping plans for this Gainesville Community Redevelopment Agency project.</u> | | | |

Dedicated to improving the quality of life of the Region's citizens,
by coordinating growth management, protecting regional resources,
promoting economic development and providing technical services to local governments.

Page #41 VII. Year 2040 Long Range Transportation Plan- APPROVE STAFF
8:00 p.m. Scope of Work Emerging Issues RECOMMENDATION

The MTPO needs to decide if it wants to address any of the optional emerging issues in the next update of the long range transportation plan.

Page #47 VIII. Public Involvement Plan Update APPROVE STAFF RECOMMENDATION
8:15 p.m.
CAC ONLY

Each year, the MTPO reviews its public involvement process to ensure that it provides for full and open access to all citizens.

Page #49 IX. Draft Transportation Policy Manual APPROVE STAFF
8:30 p.m. RECOMMENDATION
CAC ONLY

On March 21, 2012, the TAC voted to “sunset” the MTPO’s Urban Design Manual. However, the CAC voted to defer this agenda item and requested additional information.

Page #59 X. Dr. Kermit Sigmon Citizen Participation Award SELECT RECIPIENT
8:50 p.m.
CAC ONLY

Each CAC member will be asked to vote for one person.

XI. Information Items

The following materials are for your information only and are not scheduled to be discussed unless otherwise requested.

- Page #61 A. CAC and TAC Attendance Records
Page #63 B. Tree Replacement Project- Williston Road
Page #65 C. FDOT Work Program and Transportation Improvement Program Amendment email
Page #67 D. Meeting Calendar- 2012
Page #69 E. Meeting Calendar- 2013

*No handout included with the enclosed agenda material.

MINUTES

GAINESVILLE URBANIZED AREA TRANSPORTATION STUDY
METROPOLITAN TRANSPORTATION PLANNING ORGANIZATION (MTPO)
TECHNICAL ADVISORY COMMITTEE (TAC)

Gainesville Regional Utilities
301 SE 4th Avenue
Gainesville, Florida

2:00 p.m.
Wednesday
September 19, 2012

MEMBERS PRESENT

Doug Robinson, Chair
Dekova Batey
Chris Dawson
Linda Dixon
Steve Dopp
Debbie Leistner
Dean Mimms
Karen Taulbee
Chris Ziegler

MEMBERS ABSENT

Ron Fuller
John Gifford
Mike Iguina
Steve Kabat
Harrell Harrison

OTHERS PRESENT

Jiachen Lu
Gene Lampp
Chandler Otis
Brian Singleton

STAFF PRESENT

Marlie Sanderson
Michael Escalante

CALL TO ORDER

Chair Doug Robinson, Regional Transit System Chief Transit Planner, called the meeting to order at 2:28 p.m.

I. INTRODUCTIONS

Chair Robinson introduced himself and asked others to introduce themselves.

II. APPROVAL OF THE MEETING AGENDA

Chair Robinson asked for approval of the agenda.

Mr. Marlie Sanderson, Director of Transportation Planning, asked that the agenda be amended to move item XI. State Road 226 Transportation System Management Project Scoping after item III. Approval of Committee Minutes.

item for the County Transportation Sales Tax.

MOTION: Dean Mimms moved to approve the meeting agenda amended to move item XI. State Road 226 Transportation System Management Project Scoping after item III. Approval of Committee Minutes. Linda Dixon seconded; motion passed unanimously.

III. APPROVAL OF COMMITTEE MINUTES

Chair Robinson asked for approval of the May 23, 2012 minutes.

MOTION: Dean Mimms moved to approve the May 23, 2012 TAC minutes. Debbie Leistner seconded; motion passed unanimously.

XI. STATE ROAD 226 TRANSPORTATION SYSTEM MANAGEMENT PROJECT SCOPING

Mr. Sanderson stated that Florida Department of Transportation (FDOT) staff requested an opportunity to present the State Road 226 Transportation System Management Project Scoping to the committee.

Ms. Karen Taulbee, FDOT Transportation Specialist, discussed the State Road 226 Transportation System Management Project Scoping and answered questions.

MOTION: Linda Dixon moved to recommend that the Metropolitan Transportation Planning Organization for the Gainesville Urbanized Area approve the State Road 226 Transportation System Management Project Scoping. Dean Mimms seconded; motion passed unanimously.

IV. SW 8TH AVENUE MULTI-USE PATH

Mr. Sanderson stated that Alachua County staff requested an opportunity to present the SW 8th Avenue Multi-use Path Project to the committee.

Mr. Brian Singleton, Alachua County Civil Engineer I, discussed the SW 8th Avenue Multi-use Path Project and answered questions.

MOTION: Karen Taulbee moved to recommend that the Metropolitan Transportation Planning Organization for the Gainesville Urbanized Area forward a recommendation to the Alachua County Board of County Commissioners to approve the SW 8th Avenue Multi-use Path Scoping Plans. Linda Dixon seconded; motion passed unanimously.

**V. YEAR 2040 LONG RANGE TRANSPORTATION PLAN-
SCOPE OF WORK EMERGING ISSUES**

Mr. Sanderson stated that Alachua County staff requested an opportunity to present the Archer Braid Project to the committee. He discussed the Year 2040 Long Range Transportation Plan- Scope of Work Emerging Issues and answered questions.

Ms. Linda Dixon, University of Florida Assistant Director for Facilities Planning, discussed bicycle and pedestrian alternatives.

Mr. Chris Dawson, Alachua County Transportation Planner, discussed the County Mobility Plan's performance measures, vehicle miles travelled/capita and maintenance costs and fiscal sustainability.

VIII. ARCHER ROAD AT SW 34TH STREET INTERSECTION MODIFICATIONS

Mr. Sanderson stated that, at its June 4th meeting, the MTPO requested information about ways to accommodate southbound right turns. He discussed SW 34th Street intersection modifications and answered questions.

Mr. Chris Ziegler, Alachua County Senior Engineering technician, announced that there would be a Traffic Operations Committee meeting on September 20, 2012 at 1:30 p.m.

IX. VICE CHAIR ELECTION

Mr. Sanderson stated that, with the resignation of former Vice Chair Ha Nguyen, the committee needs to elect a new Vice Chair.

MOTION: Dean Mimms moved to elect Jeff Hays as TAC Vice Chair. Steve Dopp second; motion passed unanimously.

X. INFORMATION ITEMS

There was no discussion of the information items.

ADJOURNMENT

The meeting was adjourned at 3:17 p.m.

Date

Doug Robinson, Chair

MINUTES

GAINESVILLE URBANIZED AREA TRANSPORTATION STUDY METROPOLITAN TRANSPORTATION PLANNING ORGANIZATION (MTPO) CITIZENS ADVISORY COMMITTEE (CAC)

Grace Knight Conference Room
12 SE 1st Street
Gainesville, Florida

7:00 p.m.
Wednesday
September 19, 2012

MEMBERS PRESENT

Jan Frentzen, Chair
E. J. Bolduc
Nelle Bullock
Mary Ann DeMatas
Melinda Koken
Chandler Otis
James Samec
Ruth Steiner
Ewen Thomson
Chris Towne

MEMBERS ABSENT

Rob Brinkman, Vice Chair
Blake Fletcher
John Richter
Holly Shema

OTHERS PRESENT

Joseph Floyd
Jeff Hays
Tricia Kyzar
Gene Lampp
Ben Lytle
Marely Ortiz
Jessica Pace
Karen Taulbee

STAFF PRESENT

Marlie Sanderson
Michael Escalante

CALL TO ORDER

Chair Jan Frentzen called the meeting to order at 7:02 p.m.

I. INTRODUCTIONS

Chair Frentzen introduced himself and asked others to introduce themselves.

II. APPROVAL OF THE MEETING AGENDA

Mr. Marlie Sanderson, Director of Transportation Planning, asked that the agenda be amended to move items XI. State Road 226 Transportation System Management Project Scoping and VII. Fix Our Roads Alachua County Surtax to follow item III. Approval of Committee Minutes.

MOTION: Ruth Steiner moved to approve the meeting agenda amended to move items XI. State Road 226 Transportation System Management Project Scoping and VII. Fix Our Roads Alachua County Surtax to follow item III. Approval of Committee Minutes. James Samec seconded; motion passed unanimously.

III. APPROVAL OF COMMITTEE MINUTES

Chair Frentzen asked for approval of the CAC meeting minutes.

MOTION: Ruth Steiner moved to approve the July 25, 2012 CAC minutes. James Samec seconded; motion passed unanimously.

XI. STATE ROAD 226 TRANSPORTATION SYSTEM MANAGEMENT PROJECT SCOPING

Mr. Sanderson stated that Florida Department of Transportation (FDOT) staff requested an opportunity to present the State Road 226 Transportation System Management Project Scoping to the committee.

Ms. Karen Taulbee, FDOT Transportation Specialist, discussed the State Road 226 Transportation System Management Project Scoping and answered questions.

MOTION: Ruth Steiner moved to recommend that the Metropolitan Transportation Planning Organization for the Gainesville Urbanized Area approve the State Road 226 Transportation System Management Project Scoping. James Samec seconded; motion passed unanimously.

VII. FIX OUR ROADS ALACHUA COUNTY SALES SURTAX

Mr. Sanderson stated that the CAC requested a presentation on the proposed Alachua County Sales Surtax.

Mr. Jeff Hays, Alachua County Transportation Planning Manager and Tricia Kyzar, Alachua County Administrative Assistant, discussed the Alachua County Sales Surtax and answered questions.

IV. SW 8TH AVENUE MULTI-USE PATH

Mr. Sanderson stated that Alachua County staff requested an opportunity to present the SW 8th Avenue Multi-use Path Project to the committee.

Mr. Brian Singleton, Alachua County Civil Engineer I, and Mr. Hays discussed the SW 8th Avenue Multi-use Path Project and answered questions.

MOTION: Ruth Steiner moved to recommend that the Metropolitan Transportation Planning Organization for the Gainesville Urbanized Area forward a recommendation to the Alachua County Board of County Commissioners to approve the SW 8th Avenue Multi-use Path Scoping Plans. E. J. Bolduc seconded; motion passed 6 to 2.

V. YEAR 2040 LONG RANGE TRANSPORTATION PLAN-
SCOPE OF WORK EMERGING ISSUES

Mr. Sanderson stated that Alachua County staff requested an opportunity to present the Archer Braid Project to the committee. He discussed the Year 2040 Long Range Transportation Plan- Scope of Work Emerging Issues and answered questions.

VI. DRAFT TRANSPORTATION POLICY MANUAL

Mr. Sanderson stated that the CAC deferred the draft Transportation Policy Manual to staff for development of additional information. Mr. Sanderson discussed revisions to the draft Transportation Policy Manual and answered questions.

MOTION: Melinda Koken moved to recommend that the MTPO approve the draft Transportation Policy Manual as the replacement of the Urban Design Policy Manual. Ruth Steiner seconded; after further discussion and a request for additional information, the motion was withdrawn.

X. INFORMATION ITEMS

There was no discussion of the information items.

ADJOURNMENT

The meeting was adjourned at 9:23 p.m.

Date

Jan Frentzen, Chair



2009 NW 67th Place, Gainesville, FL 32653-1603 • 352.955.2200

November 21, 2012

TO: Metropolitan Transportation Planning Organization for the Gainesville Urbanized Area

FROM: Marlie Sanderson, Director of Transportation Planning

SUBJECT: Florida Department of Transportation Tentative Five Year Work Program

STAFF RECOMMENDATION

Recommend that the Metropolitan Transportation Planning Organization for the Gainesville Urbanized Area send a letter to Florida Department of Transportation thanking them for the opportunity to review Tentative Five Year Work Program.

BACKGROUND

Each year, FDOT submits a Five Year Work Program to the State Legislature. The Florida Department of Transportation Tentative Five Year Work Program lists all of the projects that are funded with state and federal funds over the next five fiscal years (Fiscal Years 2014 to 2018).

The enclosed Exhibit 1 is the FDOT District 2 Tentative Work Program for Fiscal Years 2014 - 2018 for Alachua County. At the Committee meeting, Florida Department of Transportation staff will present and discuss the Tentative Five Year Work Program. The Tentative Five Year Work Program can also be downloaded from the website below.

<http://www.d2wpph.com/PDF/Alachua%20Citizen's%20Plan%2011-9-2012.pdf>

Action Being Requested

The reason that this is on the agenda is to give the Metropolitan Transportation Planning Organization for the Gainesville Urbanized Area the opportunity to request changes to existing or proposed projects and to hear requests for new projects to be added to, or existing projects to be deleted from, the Tentative Five Year Work Program.

t:\marlie\ms13\mtpo\memo\fdotwpccommittees.docx

Dedicated to improving the quality of life of the Region's citizens,
by coordinating growth management, protecting regional resources,
promoting economic development and providing technical services to local governments.

EXHIBIT 1

FLORIDA DEPARTMENT OF TRANSPORTATION
5 - YEAR TRANSPORTATION PLAN (\$ IN THOUSANDS)
TENTATIVE FY 2014 - 2018 (11/09/2012 01:09:11)

ALACHUA COUNTY

Item No	Project Description	Work Description	Length	2014	2015	2016	2017	2018
Highways: Interstate								
Item No	Project Description	Work Description	Length	2014	2015	2016	2017	2018
4230713	I-75 (SR 93) AT SR 121	PD&E/EMO STUDY	.006	151 PDE		501 PE	1 PE	
4230711	I-75 (SR 93) AT SR 222 (39TH AVENUE)	INTERCHANGE IMPROVEMENT	1.360	5 PE				
4246851	I-75 (SR 93) AT US 441 OPERATIONAL IMPROVEMENTS	INTERCHANGE IMPROVEMENT	.167	104 DSB	108 DSB			
4288051	I-75 (SR 93) FR MARION C/L TO S. OF SR 121	RESURFACING	9.270			17,448 CST		
4288041	I-75 (SR 93) FR S. OF SR 121 TO S. OF SR 222	RESURFACING	7.413			16,787 CST		
4288021	I-75 (SR 93) FROM N. OF SR25/US441 TO SANTA FE RIVER	RESURFACING	8.750	5 PE	13,708 CST		124 CST	
4288031	I-75 (SR 93) FROM S. OF SR 222 TO N. OF SR 25/US 441	RESURFACING	9.757	5 PE	19,340 CST	171 CST	176 CST	
4269821	I-75 (SR 93) FROM 39TH AVE. TO END OF ROADWAY	RESURFACING	.682	1 CST				
4335101	I-75 FROM MARION C/L TO SR 441	ITS FREEWAY MANAGEMENT	.000	2,775 CST				
Highways: State Highways								
Item No	Project Description	Work Description	Length	2014	2015	2016	2017	2018
4320181	SR 121 FROM LACROSSE TO UNION COUNTY LINE	RESURFACING	6.082		25 RRU	3,363 CST	31 CST	32 CST
4322631	SR 121 FROM US 441 TO LACROSSE	RESURFACING	2.020	326 PE	100 RRU	3,969 CST		
4305131	SR 121 FROM: NW 202 PLACE TO: S. OF CSX RAILROAD	SIDEWALK	.463	75 PE		851 CST		
4305471	SR 121 FROM: SR24 TO: NW 5TH AVENUE	RESURFACING	1.949		3,629 CST	34 CST	35 CST	
4272031	SR 121 NW 34TH ST. @ YMCA DRIVEWAY	ADD LEFT TURN LANE(S)	.200	1 PE				
4247671	SR 121 NW 34TH ST. FROM NORTHSIDE PARK TO US 441	SIDEWALK	.313	3 PE				
				397 CST	4 CST	4 CST		
4244401	SR 20 (US 27) AT SANTA FE RIVER BRIDGE#260006	BRIDGE - PAINTING	.041	40 CST				
2078182	SR 20 FROM EAST OF US 301 TO PUTNAM C/L	ADD LANES & RECONSTRUCT	1.460	1 PE	1,500 RRU	16,709 CST	28 CST	205 CST
				1 ROW				
4322411	SR 200 (US 301) FR END OF EXIST SIDEWALK TO NE 177TH PLACE	SIDEWALK	1.200	509 CST				
4305541	SR 200 (US 301) FROM: MARION C/L TO: CR 325	RESURFACING	1.320	3 PE	2,462 CST	23 CST	24 CST	
4305551	SR 200 (US 301) FROM: SOUTH OF C & G TO: NORTH OF C & G	RESURFACING	1.972	25 PE	3,103 CST	29 CST	30 CST	
				20 RRU				
4236082	SR 226 (SE 16TH AVE) AT MAIN ST AT SR 331 (WILLISTON RD)	INTERSECTION IMPROVEMENT	.550	1 PE		1,680 CST		
				394 ROW				
4307501	SR 226 (SW 16TH AVE) FROM SHEALY DRIVE TO SW 16TH STREET	TRAFFIC SIGNAL UPDATE	.543	5 PE		1,075 CST	11 CST	11 CST
				2 ROW				
4288931	SR 24 (SW ARCHER RD) FR SW 169TH DR/BOYKIN AVE TO SW 73RD CT/MACDOWELL	SIDEWALK	.505	212 CST				
4286911	SR 24 FROM SR200 / US 301 TO SR 24	RIGID PAVEMENT REHABILITATION	.437	2 PE				
				775 CST	6 CST	7 CST		
4286901	SR 25 (US 441) FROM 6TH STREET TO CR 340A/CSX RR	RESURFACING	10.704	3 PE				
				10,898 CST	102 CST	105 CST		
4307591	SR 26 (E.UNIVERSITY) FROM SR 20 TO 15TH STREET	TRAFFIC SIGNAL UPDATE	.097	1 PE		276 CST	3 CST	3 CST
				31 ROW				
4305421	SR 26 (NEWBERRY RD) FR: WEST OF NW 80TH BLVD. TO: SW 38TH ST.	RESURFACING	2.925		5,379 CST	50 CST	52 CST	
2078502	SR 26 CORRIDOR FROM GILCHRIST C/L TO CR 26A E OF NEWBERRY	PRELIM ENG FOR FUTURE CAPACITY	4.031	800 PDE				5,108 PE
4272161	SR 45 NEWBERRY REBUILD RR CROSSING #625896-C	RAILROAD CROSSING	.100	300 RRU				
Highways: Local Roads								
Item No	Project Description	Work Description	Length	2014	2015	2016	2017	2018
4322401	SE 221 ST (N.JOHNSON) FROM TRAILHEAD TO SR 20	BIKE LANE/SIDEWALK	.504	10 PE		69 CST		
4333571	SW 170TH STREET FROM SO. OF SW 147TH AVE TO SW 128TH PLACE	SIDEWALK	1.180					273 CST
4288951	SW 8TH AVE FROM SW 122ND STREET TO SW 91ST STREET	BIKE LANE/SIDEWALK	2.007	1,050 CST				
Highways: Off State Hwy Sys/Off Fed Sys								
Item No	Project Description	Work Description	Length	2014	2015	2016	2017	2018
4322551	CHOLOKKA BLVD FR END OF EXIST SIDEWALK TO US 441	SIDEWALK	.400	40 PE		134 CST		

ALACHUA COUNTY

Item No	Project Description	Work Description	Length	2014	2015	2016	2017	2018
4322421	HULL ROAD FROM PARKING LOT TO SR 121/SW 34TH STREET	BIKE PATH/TRAIL	.300	1 ROW	328 CST			
4288941	NEWBERRY BIKE/PED VARIOUS TRAIL CONNECTIONS TO TRAILHEADS & SCHOOLS	BIKE LANE/SIDEWALK	.000	632 CST				
4307171	SW 8TH AVENUE FROM: SW 143RD STREET TO: SW 122ND STREET	NEW ROAD CONSTRUCTION	2.391		2,430 CST			
4306141	UF CAMPUS GREENWAY FROM GALE LEMERAND DR TO SR 24 (ARCHER RD)	BIKE LANE/SIDEWALK	1.000	1 ROW	1,006 CST			
4288961	UF CAMPUS GREENWAY FROM SR 121 (SW 34TH ST) TO GALE LEMERAND DR,	BIKE LANE/SIDEWALK	.000	19 PE	1,548 CST			
				1 ROW				
Freight, Logistic And Passenger Operation: Aviation								
Item No	Project Description	Work Description	Length	2014	2015	2016	2017	2018
4331251	GAINESVILLE REG APT DGN & CONST AUTO PARKING LOT EXPANSION PFL0006240	AVIATION PRESERVATION PROJECT	.000					225 CAP
4331241	GAINESVILLE REG APT DGN & CONST COMMERCIAL APRON EXPANSION PFL006249	AVIATION SAFETY PROJECT	.000					50 CAP
4331231	GAINESVILLE REG APT DGN & CONST NEW AIR TRAFF IC CONTROL TOWER PFL09834	AVIATION SAFETY PROJECT	.000					200 CAP
4329611	GAINESVILLE REG APT RUNWAY 7-25 RECONST/REPAI R/OVERLAY PFL0009571	AVIATION PRESERVATION PROJECT	.000	1,410 CAP				
4288311	GAINESVILLE REGIONAL AIRPORT BUILDING REPAIR/ TERMINAL ROOF PFL0006266	AVIATION PRESERVATION PROJECT	.000			14 CAP		
4288301	GAINESVILLE REGIONAL AIRPORT FUEL FACILITY PFL0008725	AVIATION REVENUE/OPERATIONAL	.000				250 CAP	
4290341	GAINESVILLE REGIONAL APT SAFETY PROJECT ARFF FACILITY PFL0005723	AVIATION SAFETY PROJECT	.000			30 CAP		
4313091	GAINESVILLE REGIONAL APT DGN & CONST TAXIWAY " A" PHASE II PFL0009324	AVIATION CAPACITY PROJECT	.000				25 CAP	
4331201	GAINESVILLE REGIONAL APT PAPI AND BEACON REPLACEMENT PF0009132	AVIATION SAFETY PROJECT	.000					55 CAP
4290331	GAINESVILLE REGIONAL APT REVENUE PARKING LOT AUTO PARKING PFL0006242	AVIATION PRESERVATION PROJECT	.000	108 CAP	215 CAP			
4288291	GAINESVILLE REGIONAL APT ROAD RECONST/REPAIR/ OVERLAY PFL0008731	AVIATION CAPACITY PROJECT	.000			200 CAP		
4288321	GAINESVILLE REGIONAL APT TAXIWAY A DRAINAGE/ RETENTION PFL0008733	AVIATION PRESERVATION PROJECT	.000			46 CAP		
4290351	GAINESVILLE REGIONAL APT TERMINAL REHAB PHASE III PFL0002243	AVIATION PRESERVATION PROJECT	.000	38 CAP				
Freight, Logistic And Passenger Operation: Transit								
Item No	Project Description	Work Description	Length	2014	2015	2016	2017	2018
4330771	ALACHUA CO GAINESVILLE RTS SERVICE DEVELOPMENT	TRANSIT SERVICE DEMONSTRATION	.000	60 OPS				
4330761	ALACHUA CO GAINESVILLE RTS SERVICE DEVELOPMENT PROJECT	TRANSIT SERVICE DEMONSTRATION	.000	56 OPS				
4330781	ALACHUA CO GAINESVILLE RTS SERVICE DEVELOPMENT PROJECT	TRANSIT SERVICE DEMONSTRATION	.000	90 OPS				
4272501	ALACHUA COUNTY FED SEC 5311 RURAL TRANSIT FUNDING	OPERATING/ADMIN. ASSISTANCE	.000		303 OPS	318 OPS	334 OPS	351 OPS
4233121	ALACHUA COUNTY FED SECT 5311 RURAL TRANSIT FUNDING	OPERATING/ADMIN. ASSISTANCE	.000	288 OPS				
4117581	GAINESVILLE RTS FED SECT 5309 DISCRETIONARY CAPITAL GRANT	CAPITAL FOR FIXED ROUTE	.000					4,755 CAP
4309621	GAINESVILLE RTS SERVICE DEVELOPMENT	TRANSIT SERVICE DEMONSTRATION	.000	46 OPS				
4327681	GAINESVILLE RTS SERVICE DEVELOPMENT BUS PASS PROGRAM	TRANSIT SERVICE DEMONSTRATION	.000	10 OPS				
4326151	GAINESVILLE SERVICE DEVELOPMENT PROJECT ROUTE 76 RTS	TRANSIT SERVICE DEMONSTRATION	.000	56 OPS				
4299272	RTS BUS FACILITY GAINESVILLE	BUILDINGS	.000			4,000 CAP	4,100 CAP	

Selection Criteria

Report Element	Requested Value
Report Description:	Styled PDF Detail Report: By Local Name
Component Groups:	Highways=Yes; FLP=Yes; Turnpike=Yes; Maintenance=No; Planning=No; FCO=No; Research and Testing=No; FI Rail Enterprise=Yes; Transportation Disadvantaged=Yes; Miscellaneous=Yes;
Version:	G1
Fiscal Year:	2014
Number of Years:	5
District:	Managing District 02
County:	26
Snapshot:	11/09/2012 01:09:11
Allocation Type:	1
Report Format:	PDF
Transportation System:	Not specified (Select All)
Contract Class:	B
Work Mix:	Not specified (Select All)
Phase Group:	Not specified (Select All)
Phase Type:	Not specified (Select All)
Program Number:	Not specified (Select All)
Fund Group:	Not specified (Select All)
Item Status - from:	Not specified
Item Status - to:	020
Item Group:	Not specified (Select All)

Phase Group Descriptions

Phase	Description	Phase Group	Phase Type	Exceptions
ADM	Administration	A	Any	Excl pgm 52; Ph A8 w/pgm 39
CAP	Capital	9	Any	
CST	Construction	5,6	Any	Excl Ph 5A,5D,56,57; Cndcls 9
DSB	Design Build	5,6	Any	With Conclass 9 only
ENV	Environmental	C	Any	
INC	Contract Incentives	5	A	
LAR	Local Advance Reimburse	A	8	With Program 39 only
MNT	Brdg/Rdwy/Contract Maint	7	Any	
OPS	Operations	8	Any	
PDE	P D & E	2	Any	
PE	Preliminary Engineering	3	Any	
PLN	Planning	1	Any	
RES	Research	B	Any	
ROW	Right of Way	4	Any	Excl Phase 46 and 47
RRU	Railroad & Utilities	4,5	6,7	
MSC	Miscellaneous	Other	Other	
RPY	Repayments	5	D	Also incl Ph A8 w/pgm 61,78,SB

Component Descriptions

Component Description	Trans System	Phase Group	Phase Type	Budget Dist
Highways	01,03-07,16	Any	Any	Any
Turnpike	02	Any	Any	Any
Fixed Capital Outlay	12	Any	Any	Any
Research & Testing	Any	B	Any	Any
Transportation Planning	13	1	Any	Any
Maintenance	Any	7	Any	Any
F, L and PO	08-11,15	Any	Any	Any
Transportation Disadvantaged	14	Any	Any	Any
Florida Rail Enterprise	Any	any	Any	31
Miscellaneous	Any Other	Other	Other	Any

System Group Descriptions

System Group	Trans System	Program	Exceptions
Interstate	01	Any	Excl pgm 90
State Highways	03,04,05	Any	Excl pgm 90
Local Roads	06,07	Any	Excl pgm 90
Intermodal	08-11,15	Any	Excl pgm 90
High Speed Rail Development	Any	90	
Other	Any Other	Other	Excl pgm 90



Serving

Alachua • Bradford

Columbia • Dixie • Gilchrist

Hamilton • Lafayette • Madison

Suwannee • Taylor • Union Counties

2009 NW 67th Place, Gainesville, FL 32653-1603 • 352.955.2200

November 20, 2012

TO: Metropolitan Transportation Planning Organization for the Gainesville Urbanized Area

FROM: Marlie Sanderson, Director of Transportation Planning

SUBJECT: **Metropolitan Planning Area Boundary, Voting Members and Voting Procedures**

STAFF RECOMMENDATION

Recommend that the Metropolitan Transportation Planning Organization for the Gainesville Urbanized Area authorize the Chair to sign the draft letter attached as Exhibit 1.

BACKGROUND

Attached is a letter from the Florida Department of Transportation concerning whether modifications are needed to the metropolitan planning area boundary, Board membership apportionment plan and other related documents based on the Year 2010 Census. The Metropolitan Transportation Planning Organization for the Gainesville Urbanized Area must submit a response letter by February 1, 2013.

The attached draft letter reaffirms the existing Board membership apportionment plan, including existing voting procedures, and approves adjustments to the existing metropolitan planning area boundary. The metropolitan transportation planning area has been expanded to include all of the City of Gainesville and all of the Year 2010 Census urbanized areas.

This letter also requests authorization for staff to prepare a report concerning the advantages and disadvantages of expanding the metropolitan area planning boundary to include either all of Alachua County or all of Alachua and Gilchrist counties, including corresponding modifications that would be needed to existing membership and voting procedures. The reason that Gilchrist County is included in one of the options to study is because federal and state laws state that the metropolitan planning area "*may encompass the entire metropolitan statistical area.....*" The metropolitan statistical area includes both Alachua County and Gilchrist County.

Attachment

t:\marlie\ms13\reapportionment\cactacnov28.docx

Dedicated to improving the quality of life of the Region's citizens,
by coordinating growth management, protecting regional resources,
promoting economic development and providing technical services to local governments.

1. The first part of the report discusses the general situation of the country and the progress of the work in the various departments. It also mentions the results of the work done in the past year.

2. The second part of the report discusses the work done in the various departments during the past year. It mentions the results of the work done in the various departments and the progress made in the various departments.

3. The third part of the report discusses the work done in the various departments during the past year. It mentions the results of the work done in the various departments and the progress made in the various departments.

4. The fourth part of the report discusses the work done in the various departments during the past year. It mentions the results of the work done in the various departments and the progress made in the various departments.

EXHIBIT 1

DRAFT

December 4, 2012

Secretary Ananth Prasad, P.E.
Florida Department of Transportation (FDOT)
605 Suwannee Street
Tallahassee, Florida 32399-0450

RE: Metropolitan Planning Area Boundary and Membership Apportionment Plan

Dear Secretary Prasad:

In regards to your November 2, 2012 letter to the Metropolitan Transportation Planning Organization for the Gainesville Urbanized Area requesting a determination *"if any modifications to the metropolitan planning area boundary, Board membership apportionment plan, and other related documents are needed based upon the 2010 Census."* On December 3, 2012, the Metropolitan Transportation Planning Organization for the Gainesville Urbanized Area approved a motion to:

"reaffirm the existing Board membership apportionment plan, including existing voting procedures, and approve adjustments to the existing metropolitan planning area boundary as shown in Illustration I."

A description of the current Metropolitan Transportation Planning Organization for the Gainesville Urbanized Area membership and how it complies with the statutory requirements is enclosed as Exhibits 1, 2 and 3. According to Florida Department of Transportation District 2 staff, we do not need to modify any of our existing agreements.

For your information, the Metropolitan Transportation Planning Organization for the Gainesville Urbanized Area will consider expanding its planning area boundary. This may include either expanding its metropolitan planning area boundary to include all of Alachua County or expanding its boundary to include all of Alachua and Gilchrist Counties. The reason that Gilchrist County is included in one of the options to study is because federal and state laws state that the metropolitan planning area *"may encompass the entire metropolitan statistical area....."* The metropolitan statistical area includes both Alachua and Gilchrist Counties. For each of these options, we will also consider corresponding revisions to our voting membership, voting procedures and existing agreements. We anticipate completing this evaluation by June 30, 2013.

If you have any questions concerning this matter, please contact Mr. Marlie Sanderson, AICP, Director of Transportation Planning, at 352.955.2200, extension 103.

Sincerely,

Mike Byerly, Chair
Metropolitan Transportation Planning Organization for the
Gainesville Urbanized Area

xc: Greg Evans, FDOT District 2 Secretary
James Bennett, FDOT District 2 Planning Manager
Karen Taulbee, FDOT District 2 MTPO Liaison

Kathleen Neill FDOT Policy Planning Director
Yvonne Arens, FDOT MPO Statewide Coordinator
Bob Romig, State Transportation Development
Administrator

Enclosures

T:\Marlie\MS13\MTPO\LETTERS\apportionresponse.docx

145

Page 13

146

147

Page 14

148

149

150

151

152

Page 15

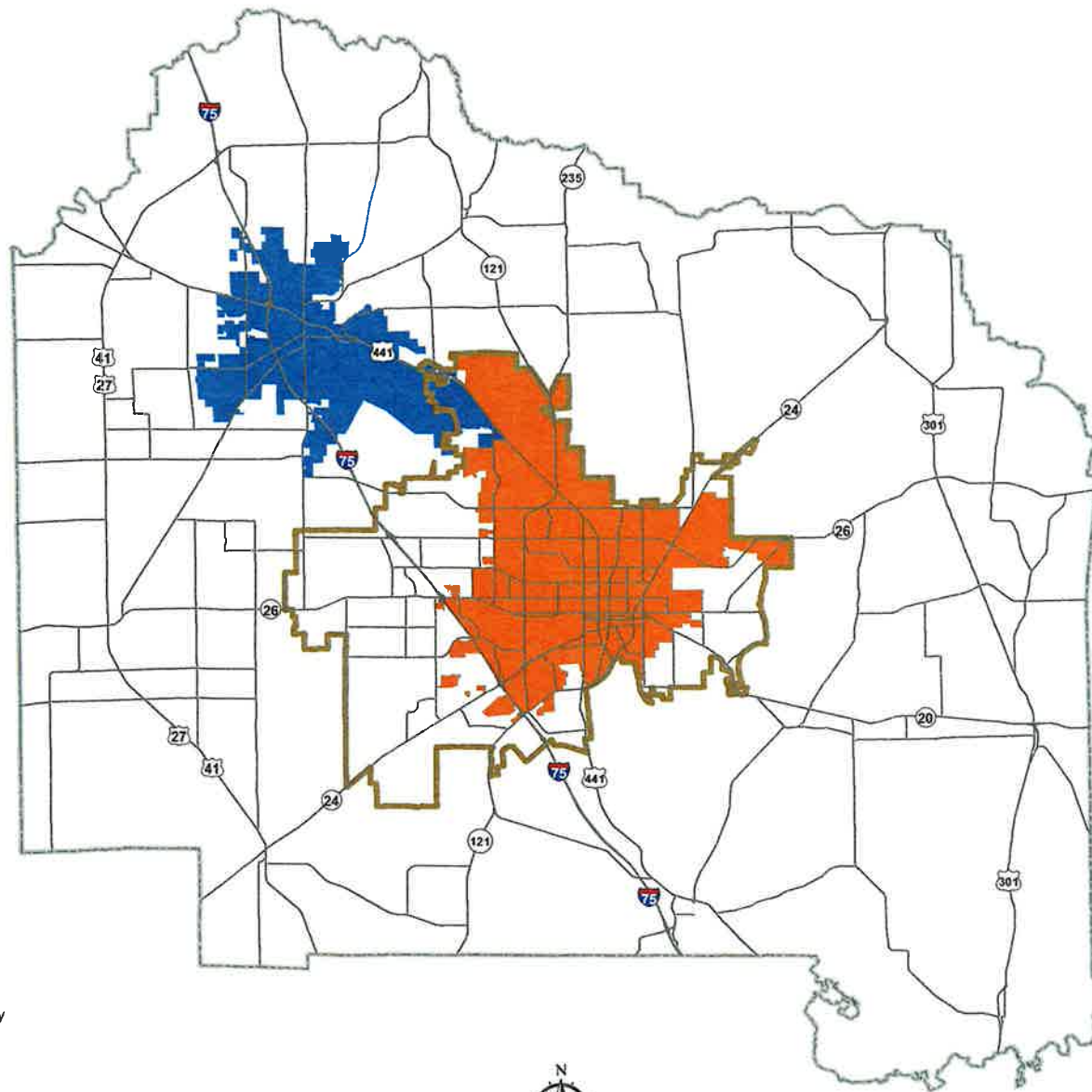
153

154

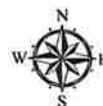
Page 16

155

Illustration I Proposed Metropolitan Planning Area Boundary



- City of Gainesville
- City of Alachua
- Proposed Metropolitan Planning Area Boundary
- Alachua County
- Roads
- Interstate Highway
- U.S. Highway
- State Highway
- County Road



Miles
0 5

W:\MTPO\MAP\MXD\GA_MTPA_Proposed.mxd

Source: U.S. Census, 2010, U.S. Department of Transportation, 2012, Florida Geographic Data Library, 2012, Alachua County, Department of Growth Management, 2012 and City of Gainesville, Planning Department, 2012.

Exhibit 1

Gainesville Urbanized Area Population

Jurisdiction	Population	Percent
City of Alachua [portion]	2,084	1
City of Gainesville [portion]	123,293	66
Unincorporated Alachua County [portion]	62,410	33
Gainesville Urbanized Area	187,787	100

Source: United States Census, 2010; United States Census American Community Survey 2006 - 2010; and Alachua County Property Appraiser, 2012.

Exhibit 2

Metropolitan Transportation Planning Organization for the Gainesville Urbanized Area Membership and Advisors

Metropolitan Planning Organization Membership Composition		
Number	Voting Status	Jurisdiction/Agency
5	Voting	Alachua County Board of County Commissioners
7	Voting	City of Gainesville Mayor and City Commissioners
1	Non-Voting Advisor	Florida Department of Transportation District 2 Secretary or his/her designee
1	Non-Voting Advisor	University of Florida President or his/her designee
1	Non-Voting Advisor	Rural Advisor [selected by the Alachua County League of Cities]

Exhibit 3

Metropolitan Transportation Planning Organization for the Gainesville Urbanized Area Membership Regulatory Compliance

Membership Statutory Compliance		
Florida Statutes Citation	Requirement	Compliance Comment
339.175(2)(a)1	Units of general government representing 75 percent of the urbanized area	Yes- As shown in Exhibit 1, the Alachua County Commission and the Gainesville City Commission represent 99 percent of the urbanized area population.
339.175(3)(a)	5 to 19 voting members [geography/population based]	Yes 12 voting members
339.175(3)(a)	County Commission at least one-third membership	Yes 41.7 percent Alachua County Commission membership
339.175(3)(a)	Elected officials of general purpose government	Yes 5 Alachua County Commissioners 6 City of Gainesville Commissioners 1 City of Gainesville Mayor
339.176	City with 50,000 population has voting member	Yes City of Gainesville

**VI**

Serving

Alachua • Bradford

Columbia • Dixie • Gilchrist

Hamilton • Lafayette • Madison

Suwannee • Taylor • Union Counties

2009 NW 67th Place, Gainesville, FL 32653-1603 • 352.955.2200

September 24, 2012

TO: Metropolitan Transportation Planning Organization for the Gainesville Urbanized Area

FROM: Marlie Sanderson, AICP, Director of Transportation Planning

SUBJECT: South Main Street- Scoping Plans

JOINT RECOMMENDATIONS

Staff recommends approval of the “scoping” plans for the South Main Street Project.

BACKGROUND

Gainesville Community Redevelopment Agency staff has prepared “scoping” plans for the South Main Street Project (see attached Exhibit 1).

Attachment

t:\marlie\ms13\mntpo\memo\southmain.docx

Dedicated to improving the quality of life of the Region's citizens,
by coordinating growth management, protecting regional resources,
promoting economic development and providing technical services to local governments.



South Main Street

Basis of Design

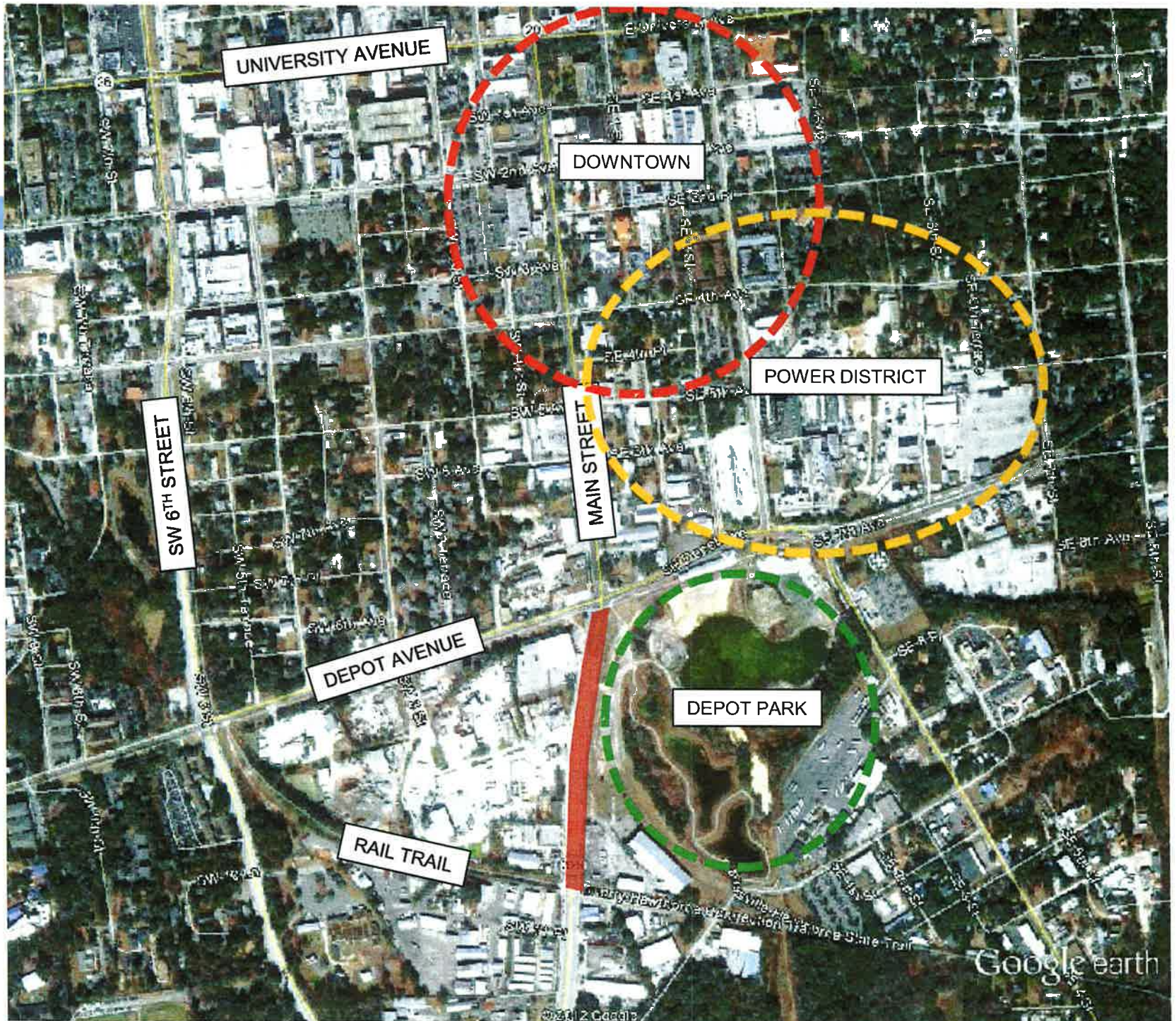
MTPO Presentation Nov-Dec 2012



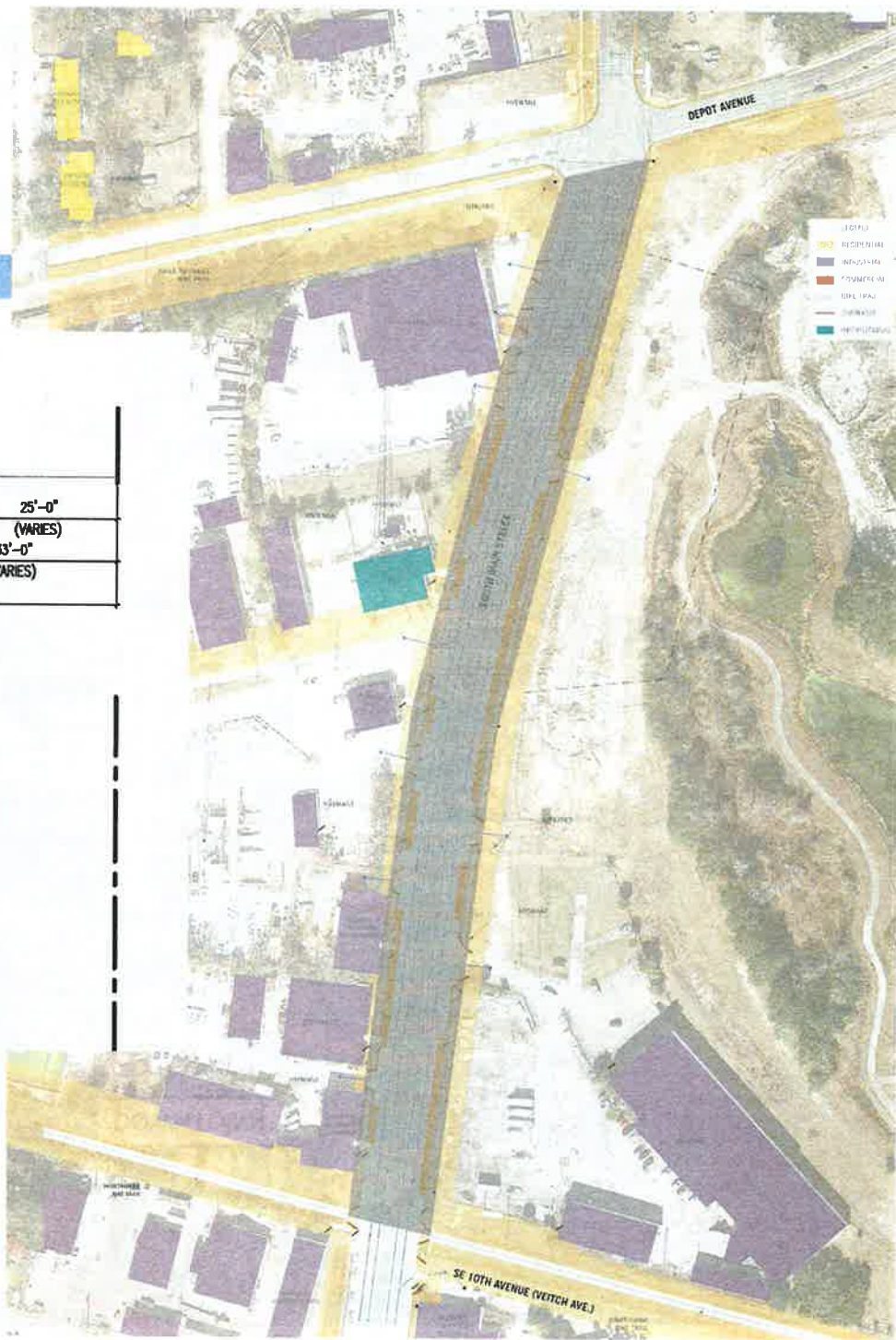
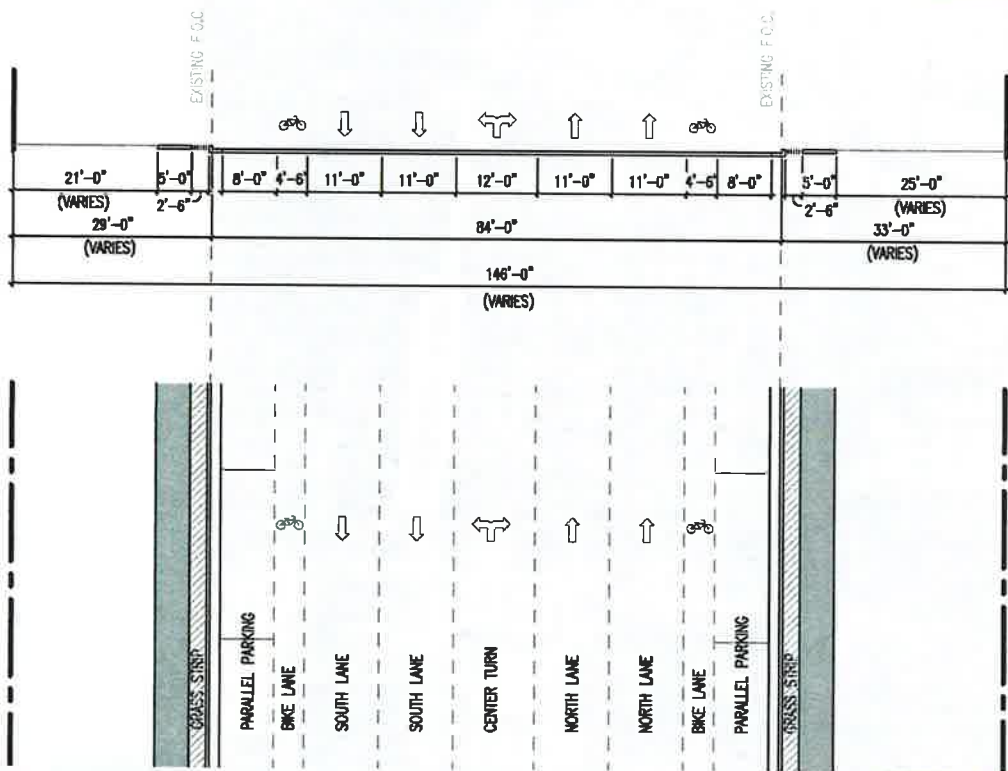
South Main Street Project



- Context
- Existing conditions
- Potential
- Goals
- Basis of Design Process
- Scoping Plan
- Next Steps



Existing Conditions



Existing Conditions



S Main St – looking north



-33-
S Main St – looking south



S Main St – looking north



S Main St – looking north

Potential



- Destination: Cade Museum & Depot Park
- Gateway
- Connection to Downtown & Power District
- Park Edge

Goals

- Destination: Cade Museum & Depot Park:
Maximize on-street parking, create a safe and inviting multi-modal environment, while maintaining through vehicle flow, clear orientation
- Gateway: Landmark, distinctive design
- Connection to Downtown & Power District:
Connect to other redevelopment efforts, signage
- Park Edge: Landscaping

Basis of Design Process

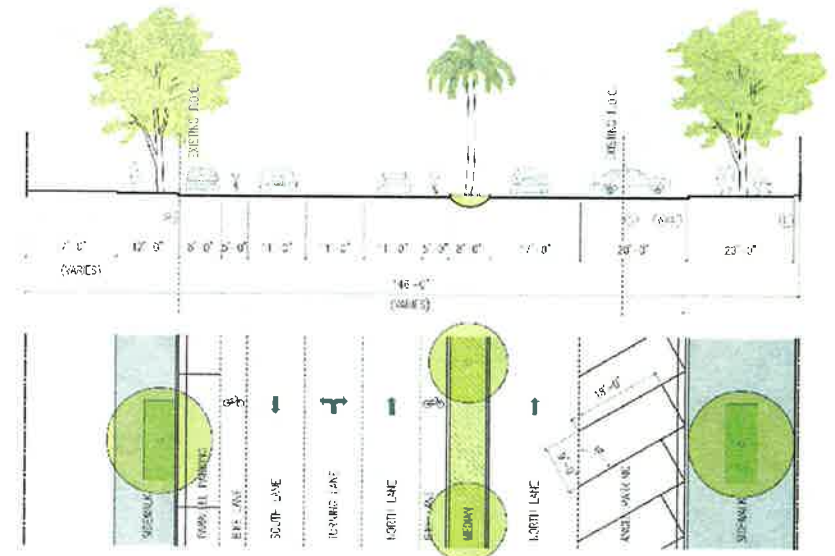
- Two rounds of Stakeholder meetings:
 - ▣ Local Business & Property Owners, Code Representative
 - ▣ Public Works, Planning, Parks & Recreation, Fire Rescue, GRU, GRUCom, RTS, MTPO, AT&T, and Code Enforcement Staff



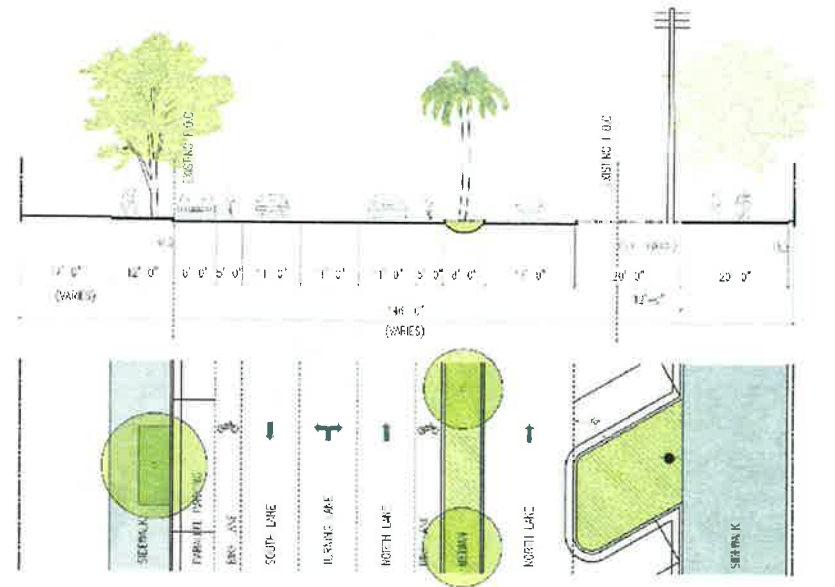
Scoping Plan



Enlarged Scoping Plans and Sections



OPTION 3A- AT DIAGONAL PARKING



OPTION 3A- AT EXISTING POWER POLE

Next Steps

- Engineering Design, Construction documents and required approvals: 2013-2014
- Construction: 2014-2015



Thank You





November 21, 2012

TO: Metropolitan Transportation Planning Organization for the Gainesville Urbanized Area

FROM: Marlie Sanderson, AICP, Director of Transportation Planning

SUBJECT: **Year 2040 Long Range Transportation Plan- Scope of Work Emerging Issues**

STAFF RECOMMENDATION

Incorporate the performance measurement “emerging issue” into the Year 2040 scope of work.

BACKGROUND

The purpose of this agenda item is for the Metropolitan Transportation Planning Organization for the Gainesville Urbanized Area to decide if it wants to incorporate any of the “emerging issues” into the scope of work for the Year 2040 long range transportation plan update.

Year 2040 Long Range Transportation Plan Update

Every five years, the long range transportation plan for the community is updated. The last plan was approved on October 27, 2010. Therefore, the next plan update needs to be approved by October 26, 2015. Exhibit 1 is a timeline of major events for the Year 2040 long range transportation plan update. As shown in Exhibit 1, the Metropolitan Transportation Planning Organization for the Gainesville Urbanized Area is scheduled to approve a scope of work for this project at its first meeting in 2013.

Emerging Issues

The Federal Highway Administration has identified several “emerging issues” that they encourage metropolitan planning organizations to consider addressing when updating the long range transportation plan (see Exhibit 2). These “emerging issues” include the following:

1. Performance Measurement;
2. Climate Change;
3. Freight;
4. Sustainable Transportation and Context Sensitive Solutions; and
5. Scenario Planning.

Performance Measures

We are recommending that the performance measurement “emerging issue” be incorporated into the scope of work. This is because recent federal transportation legislation requires that metropolitan planning organizations develop a performance-based planning approach. In approximately three years, the Metropolitan Transportation Planning Organization for the Gainesville Urbanized Area will be required to set performance targets in support of national transportation goals and develop transportation plans, and select transportation projects for funding, that will help achieve the performance targets.

The performance measures will be used to test and evaluate the following three Year 2040 alternatives transportation networks that are being recommended for testing and evaluation in the draft scope of work:

Alternative 1- Transit Emphasis- includes a mix of highway and transit solutions, but will primarily consider transit related modifications. This network alternative will include some highway modifications, but will consist primarily of a future bus rapid transit and streetcar system, new and/or extended regular and express bus routes, busways and other transit related modifications.

Alternative 2- Highway Emphasis- includes a mix of highway and transit solutions, but will primarily consider highway related modifications that expand the grid network of roads. This network alternative will include transit modifications, but will consist primarily of new roads or projects that add capacity to existing roads. This alternative will also include the projects in the currently adopted Year 2035 Livable Community Reinvestment Cost Feasible Plan.

Alternative 3- Draft Needs Plan- includes a combination of effective approaches identified in the previous two tasks.

Some examples of performance measures that could be used to evaluate these Year 2040 alternative networks include:

- Congested highway lane miles
- Number of roadway traffic crashes
- Carbon monoxide concentrations at specific locations
- Total transit ridership
- Total bus rapid transit ridership

EXHIBIT 1

**YEAR 2040 LONG RANGE TRANSPORTATION PLAN
TIMELINE**

DATE	EVENT
MTPO decides if any “emerging issues” are included in the scope of work	December 2012
Scope of work and request for proposal approved by the MTPO	February 2013
Request for proposal process begins	March 2013
Work begins on consultant contract	
University of Florida, Bureau of Economic Business Research populations projections released	
Work begins on Socioeconomic Report	April 2013
Consultant proposals ranked and scored	August 2013
Consultant contract executed by MTPO	September 2013
Consult begins work	October 2013
Staff completes Socioeconomic Report	December 2013
Model validated	August 2014
Needs Plan adopted	June 2015
Cost Feasible Plan adopted	October 26, 2015
Final documents completed 90 days after Cost Feasible Plan adopted	(to be determined)

Exhibit 2

Federal Highway Administration Emerging Issues

This section describes topics that are not currently required by federal laws and rules to be addressed in LRTPs. As such, MPOs are not required to include these considerations in their current planning processes and plans. However, these issues are receiving considerable attention in current discussions related to the next transportation bill. Each MPO has the discretion to determine whether or not to address these topics in their LRTP, and the appropriate level of detail. Depending upon when new federal surface transportation legislation is enacted, new requirements may have to be addressed within a short timeframe, so beginning to address these issues early on may potentially minimize the level of effort needed to achieve future compliance.

Performance Measurement: Issues anticipated to be part of a new transportation bill include performance measurements. FHWA and FTA encourage the MPOs to consider ways to incorporate performance measures/metrics for system-wide operation, as well as more localized measures/metrics into their LRTPs. As funding for transportation capacity projects becomes more limited, increasing emphasis will be placed on maximizing the efficiency and effectiveness of our current transportation system. Consequently, measures to assess the LRTP's effectiveness in increasing system performance may be needed.

Climate Change: MPOs may also wish to give consideration to climate change and strategies which minimize impacts from the transportation system. FHWA supports and recognizes the importance of exploring the effects of climate change on transportation, as well as the limited environmental resources and fuel alternatives. State legislation now encourages each MPO to consider strategies that integrate transportation and land use planning in their LRTP to provide for sustainable development and reduce greenhouse gas emissions, as well as include energy considerations in all state, regional and local planning. As a result, MPO LRTP Updates are encouraged to include discussions and strategies aimed at addressing this issue.

Freight: The planning process is required to address the eight planning factors as described in 23 CFR 450.306(a). The degree to which each factor is addressed will vary depending upon the unique conditions of the MPO areas, but efforts should be made to think through and carefully consider how to address each factor. The importance of freight to the nation's economic well-being and global competitiveness, as well as its support and promotion of job creation and retention has heightened its status at the national and regional level. MPOs should be aware that discussions of a future transportation bill have largely included a reference to the increasing importance of freight. While this is part of one of the eight planning factors, special emphasis should be given to the freight factor, as it is anticipated to play a more prominent role in future planning requirements.

Sustainable Transportation and Context Sensitive Solutions: The MPOs are encouraged to identify and suggest contextual solutions for appropriate transportation corridors. For example, Context Sensitive Solutions (CSS) may be appropriate for historic parkways, historic districts, town centers, dense "walkable" neighborhood areas, arterial "gateways", greenway trails and pedestrian ways, environmentally sensitive areas or simply where right of way is not readily available. The value of the resources present may suggest the need for alternative or special treatments (or even accepting a level of congestion and lower speeds that respects the resources). In these instances, specific livability principles might be employed for improved pedestrian and transit access – especially to schools and even traffic calming. Also, spatial relationships that support public transit like transit oriented development and the "trip not taken" while reducing greenhouse gases might be recognized as characteristics of a town center

or mixed use area with public transit access. Other livability planning goals might need to be recognized like preserving affordable housing, improving/preserving special resources like parks, monuments and tourism areas, increasing floor area ratios and reducing parking minimums in select corridors to encourage walking trips and public transit, transportation demand management, etc.

Scenario Planning: The MPOs are encouraged to use the tools and techniques that collectively are called scenario planning. Scenarios are narratives or sets of assumptions that explore plausible trajectories of change and provide a means of visioning possible future changes and different policy and investment options. The key elements in scenario planning include the use of scenarios to compare and contrast interactions between multiple factors, such as transportation, land use, and economic development; analysis of how different land-use, demographic, or other types of scenarios could impact transportation networks; identification of possible strategies that lead a community, region, or study area toward achieving elements of the preferred future; and emphasizes public stakeholder involvement throughout the process to help create options (scenarios) and assess outcomes. Scenario planning shares common elements with both alternatives analysis and visioning exercises, but primarily differs from these processes in that it examines the interactions between multiple factors, including both internal and external forces, as a way to assess possible future outcomes.

*Source- June 13, 2012 Draft Federal Highway Administration Long Range Transportation Plan
"Expectations Letter*



November 26, 2012

TO: Metropolitan Transportation Planning Organization for the Gainesville Urbanized Area
FROM: Marlie Sanderson, Director of Transportation Planning
SUBJECT: **Public Involvement Plan**

STAFF RECOMMENDATION

Approve the revised Public Involvement Plan.

BACKGROUND

Each year, the Public Involvement Plan is reviewed, and revised if necessary, in order to ensure that the planning program provides for a proactive public involvement process. This edition of the attached Public Involvement Plan includes the following substantive revisions.

- Updated the Community Profile in Appendix C to replace the 2000 Census information with 2010 Census information;
- Revised the webpage at www.ncfrpc.org/mtpo to include a feature that allows for Spanish translation, which is shown on page 26;
- Added a Business Office/Regular Business Meeting Locations and Underinvolved/Underserved Communities (page 22);
- Added a Public Notice Location and Underinvolved/Underserved Communities location map (page 23);
- Added a Houses of Worship and Underinvolved/Underserved Communities location map (page 24);
- Added a Title VI Nondiscrimination Notice in Spanish (page 27); and
- Added a Houses of Worship location map (page C-8).

Attachment

t:\marlie\ms13\mtpo\memo\pipmtpodec3.docx



**IX**

Serving

Alachua • Bradford

Columbia • Dixie • Gilchrist

Hamilton • Lafayette • Madison

Suwannee • Taylor • Union Counties

2009 NW 67th Place, Gainesville, FL 32653-1603 • 352.955.2200

November 21, 2012

TO: Citizens Advisory Committee

FROM: Marlie Sanderson, AICP, Director of Transportation Planning

SUBJECT: **Draft Transportation Policy Manual**

TECHNICAL ADVISORY COMMITTEE RECOMMENDATION

Recommend that the Metropolitan Transportation Planning Organization for the Gainesville Urbanized Area “sunset” the currently adopted Urban Design Policy Manual at the following website:

http://ncfrpc.org/mtpo/publications/MTPOUrbanDesignPolicy/MTPO_UDPM.pdf

STAFF RECOMMENDATION

Recommend that the Metropolitan Transportation Planning Organization for the Gainesville Urbanized Area “replace” the currently adopted Urban Design Policy Manual with the Transportation Policy Manual enclosed as Exhibit 1.

BACKGROUND

Over the years, the Metropolitan Transportation Planning Organization for the Gainesville Urbanized Area has adopted urban design/planning policies for the Gainesville Metropolitan Area. These policies establish design standards that are expected to be consistently applied in both the City of Gainesville and unincorporated portions of Alachua County. For example, one adopted policy is to require mast arm traffic signals that are painted black with horizontal signal heads. Over the years, these design/planning policies have been incorporated into the document entitled Urban Design Policy Manual (see website address above).

A review of this Manual indicates that it is out of date and some of the policies are not consistent with current policies of the Florida Department of Transportation (FDOT), City of Gainesville and/or Alachua County. For example, Section 7.5 on page 19 states that “*Future modifications of all signalized intersections within the GMA [Gainesville Metropolitan Area] should include the installation of traffic signal preemption system devices.*” With the installation of the Gainesville/Alachua County Traffic Management System, these devices are no longer needed.



Figure 1- Mast arms with horizontal signal heads

Alachua County staff and City of Gainesville staff have concluded that the Urban Design Policy Manual is no longer needed and that the Metropolitan Transportation Planning Organization for the Gainesville Urbanized Area should “sunset” the Manual. According to Alachua County and the City of Gainesville staff, the City and County have their own respective project design standards, specifications and review procedures and that separate Metropolitan Transportation Planning Organization for the Gainesville Urbanized Area design standards and project reviews are a duplication of project reviews conducted by Alachua County and the City of Gainesville.

Citizens Advisory Committee March 21, 2012 Review Comments

At the March 21, 2012 meeting, the Citizens Advisory Committee discussed the Technical Advisory Committee’s recommendation to “sunset” the currently adopted Urban Design Policy Manual. During this discussion, the Citizens Advisory Committee approved a motion “to table the recommendation that the MTPO sunset the Urban Design Policy Manual pending further information regarding:

1. *comparisons of the Alachua County, City of Gainesville and Metropolitan Transportation Planning Organization for the Gainesville Urbanized Area design policies;*
2. *what Metropolitan Transportation Planning Organization for the Gainesville Urbanized Area design policies are not covered in the Alachua County and City of Gainesville policies by the sunseting of the Urban Design Policy Manual; and*
3. *what differences there would be if the Urban Design Policy Manual is “sunsetting.”*

Exhibit 1

Exhibit 1 is a draft document that addresses many of the issues discussed by the Citizens Advisory Committee at recent meetings. The purpose of the proposed Transportation Policy Manual is to have an alternative to “sunsetting” the currently adopted Urban Design Policy Manual that retains the most important policy issues approved by the Metropolitan Transportation Planning Organization for the Gainesville Urbanized Area in the past.

Exhibit 2

Exhibit 2 provides a summary overview of proposed revisions to the Urban Design Policy Manual. This Exhibit shows which policies have been retained, modified, deleted and added. Of the 35 policies in the Urban Design Policy Manual, two have been retained without revisions, seven have modified language and 26 have been deleted. In addition, two new policies have been added- one concerning “Monotube Mast Arms” and the other concerning “Pedestrian Traffic Signal Timing.”

Exhibit 3

Exhibit 3 provides background information concerning specific policies in the Urban Design Policy Manual. This material provides additional information concerning why individual policies have been either retained, modified, deleted and/or added.

Exhibit 4

As noted earlier in this memorandum,

Alachua County staff and City of Gainesville staff have concluded that the Urban Design Policy Manual is no longer needed and that the Metropolitan Transportation Planning Organization for the Gainesville Urbanized Area should “sunset” the Manual. According to Alachua County and the City of Gainesville staff, the City and County have their own respective project design standards, specifications and review procedures and that separate Metropolitan Transportation Planning Organization for the Gainesville Urbanized Area design standards and project reviews are a duplication of project reviews conducted by Alachua County and the City of Gainesville.

We requested information that identified where a specific policy in the proposed Transportation Policy Manual is addressed in existing Florida Department of Transportation, Alachua County and City of Gainesville project design standards, specifications and review procedures. Our analysis of this information is provided in Exhibit 4. One summary conclusion of Exhibit 4 is that about half of the proposed policies in the Transportation Policy Manual can be found in existing Florida Department of Transportation, Alachua County and City of Gainesville project design standards, specifications and review procedures.

EXHIBIT 2

MTPO URBAN DESIGN MANUAL POLICIES- OVERVIEW

CATEGORY	#	POLICY	RETAIN	MODIFY	DELETE	ADD
Bicycle	1.1	Bicycle Travel Facilities		X		
	1.2	Bicycle Parking Facilities	X			
Intermodal/ Multimodal	2.1	Intermodal and Multimodal Travel Facilities			X	
Joint Bicycle, Pedestrian, Intermodal/ Multimodal	3.1	Advisory and Administrative Activities			X	
	3.2	Education, Encouragement and Enforcement Activities			X	
	3.3	Facilities and Program Activities			X	
Landscaping	4.1	General Landscaping Principles		X		
	4.2	Tree and Natural Area Protection Zones			X	
	4.3	Mitigation of Trees to be Removed and Minimum Tree Planting Standards			X	
	4.4	Drainage Retention Basin Landscaping			X	
	4.5	Surface Waters and Wetlands			X	
Pedestrian	5.1	Pedestrian Travel Facilities		X		
	5.2	Patterned/Textured Crosswalks			X	
	5.3	School Zone Safety			X	
	5.4	Pedestrian Traffic Signals			X	
Planning	6.1	Transportation Language Policy	X			
	6.2	Metropolitan Transportation Planning Organization Advisory Council			X	
	6.3	Graphic Depictions			X	
	6.4	Transportation Design for Livable Communities			X	
Roadway	7.1	Main Street [SW 16th Ave to Depot Ave]			X	
	7.2	Mast Arms		X		
	7.3	Newberry Road [NW 43rd St to NW 38th St]			X	
	7.4	Retention/Detention Basins			X	
	7.5	Traffic Signal Preemption Devices			X	
	7.6	Travel Demand Management/ Transportation System Management			X	
	7.7	Congestion Management System (CMS) Policy (Truck Route System)		X		
	7.8	Signage Policy			X	
	7.9	Streetlighting Fixture Policy		X		
Transit	8.1	Year 2020 LRTP Transit Element Activities			X	
	8.2	Bus Bays			X	
Transportation Enhancement	9.1	Project Cost Increase Policy			X	
MTPO Design Team	10.1	MTPO Design Team Composition			X	
	10.2	Design Team Project Review Criteria			X	
	10.3	Design Team Project Referral Criteria			X	
	10.4	Design Plan Percentage Review		X		
New Policies	-	Pedestrian Traffic Signal Timing				X
		Monotube Mast Arms				X

THE HISTORY OF THE UNITED STATES

The history of the United States is a story of growth, change, and struggle. It is a story that has shaped the nation and continues to shape the world.

The story begins with the first settlers, who came to the Americas in search of a new life.

They found a land of opportunity, but also a land of challenge.

They faced a harsh environment, with long winters and hot summers.

They also faced a people who were different from them.

But they persevered, and they built a new life for themselves.

They grew crops, raised animals, and built homes.

They learned the ways of the land, and they became part of it.

They built a society, and they created a new way of life.

They fought for freedom, and they won it.

They built a nation, and they made it great.

They are the heroes of our story, and they are the ones who made us who we are today.

They are the ones who built the United States, and they are the ones who will continue to build it.

They are the ones who will make our nation a better place for everyone.

They are the ones who will make our nation a place where everyone can thrive.

They are the ones who will make our nation a place where everyone can live in peace and harmony.

They are the ones who will make our nation a place where everyone can be proud to call home.

They are the ones who will make our nation a place where everyone can live in freedom and justice.

They are the ones who will make our nation a place where everyone can live in hope and faith.

They are the ones who will make our nation a place where everyone can live in love and compassion.

They are the ones who will make our nation a place where everyone can live in peace and harmony.

They are the ones who will make our nation a place where everyone can live in freedom and justice.

They are the ones who will make our nation a place where everyone can live in hope and faith.

They are the ones who will make our nation a place where everyone can live in love and compassion.

They are the ones who will make our nation a place where everyone can live in peace and harmony.

They are the ones who will make our nation a place where everyone can live in freedom and justice.

They are the ones who will make our nation a place where everyone can live in hope and faith.

They are the ones who will make our nation a place where everyone can live in love and compassion.

They are the ones who will make our nation a place where everyone can live in peace and harmony.

They are the ones who will make our nation a place where everyone can live in freedom and justice.

They are the ones who will make our nation a place where everyone can live in hope and faith.

They are the ones who will make our nation a place where everyone can live in love and compassion.

They are the ones who will make our nation a place where everyone can live in peace and harmony.

They are the ones who will make our nation a place where everyone can live in freedom and justice.

They are the ones who will make our nation a place where everyone can live in hope and faith.

They are the ones who will make our nation a place where everyone can live in love and compassion.

They are the ones who will make our nation a place where everyone can live in peace and harmony.

They are the ones who will make our nation a place where everyone can live in freedom and justice.

They are the ones who will make our nation a place where everyone can live in hope and faith.

They are the ones who will make our nation a place where everyone can live in love and compassion.

They are the ones who will make our nation a place where everyone can live in peace and harmony.

They are the ones who will make our nation a place where everyone can live in freedom and justice.

They are the ones who will make our nation a place where everyone can live in hope and faith.

They are the ones who will make our nation a place where everyone can live in love and compassion.

They are the ones who will make our nation a place where everyone can live in peace and harmony.

They are the ones who will make our nation a place where everyone can live in freedom and justice.

They are the ones who will make our nation a place where everyone can live in hope and faith.

They are the ones who will make our nation a place where everyone can live in love and compassion.

They are the ones who will make our nation a place where everyone can live in peace and harmony.

They are the ones who will make our nation a place where everyone can live in freedom and justice.

They are the ones who will make our nation a place where everyone can live in hope and faith.

They are the ones who will make our nation a place where everyone can live in love and compassion.

EXHIBIT 3

URBAN DESIGN POLICY MANUAL DISCUSSION

CATEGORY	#	POLICY/DISCUSSION
Bicycle	1.1	Bicycle Travel Facilities- The Florida Department of Transportation, Alachua County and the City of Gainesville have their own respective project design standards and specifications for bicycle facilities. However, the long range transportation plan is a multimodal plan that recognizes bicycling as an important mode of transportation in the Gainesville Area. Therefore, this policy is included to reinforce how important instreet bicycle facilities are to the area's transportation system by stating that they are expected on all federal aid eligible arterial and collector roads.
	1.2	Bicycle Parking Facilities- This section is included for the same reasons discussed above in Section 1.1 and to recognize that the provision of adequate bicycle parking facilities is needed to support bicycling as an important mode of transportation in the Gainesville Area.
Intermodal/ Multimodal	2.1	Intermodal and Multimodal Travel Facilities- This section is deleted because the Florida Department of Transportation, Alachua County and the City of Gainesville have their own respective project design standards and specifications that adequately address this issue.
Joint Bicycle, Pedestrian, Intermodal/ Multimodal	3.1, 3.2 and 3.3	These three sections are deleted because this material is concerned with administrative activities that do not need to be included in the updated <u>Policy Manual</u> .
Landscaping	4.1, 4.2, 4.3, 4.4 and 4.5	Sections 4.1 to 4.5 are deleted because the Florida Department of Transportation, Alachua County and the City of Gainesville have their own respective project design standards and specifications that adequately address these issues. The material that is included in the updated <u>Policy Manual</u> documents the current Florida Department of Transportation policy with respect to landscaping on the State Highway System.
Pedestrian	5.1	The Florida Department of Transportation, Alachua County and the City of Gainesville have their own respective project design standards and specifications for pedestrian facilities. However, the long range transportation plan is a multimodal plan that recognizes that the pedestrian is as an important mode of transportation in the Gainesville Area. Therefore, this policy is included to reinforce how important pedestrian facilities are to the area's transportation system by stating that they are expected on all federal aid eligible arterial and collector roads.
	5.2,	The material concerning patterned/textured crosswalks has been deleted because this treatment is not the current practice for pedestrian crosswalks by either the Florida Department of Transportation, Alachua County or the City of Gainesville.
	5.3 and 5.4	These two sections are deleted because this material is concerned with administrative activities that do not need to be included in the updated <u>Policy Manual</u> .
Planning	6.1	This policy is retained without revisions.
	6.2 and 6.3	These policies are deleted because this material is concerned with administrative activities that do not need to be included in the updated <u>Policy Manual</u> .
	6.4	This section is deleted because this material is included in the Florida Department of Transportation's Plans <u>Preparation Manual</u> , Volume 1, Chapter 21 and does not need to be repeated in the updated <u>Policy Manual</u> .

CATEGORY	#	POLICY/DISCUSSION
Roadway	7.1	This project is completed and does not need to be repeated in the updated <u>Policy Manual</u> .
	7.2	This section is retained in the updated <u>Policy Manual</u> .
	7.3 and 7.4	These sections are deleted because the Florida Department of Transportation, Alachua County and the City of Gainesville have their own respective project design standards and specifications that adequately address these issues.
	7.5	This section is deleted because the City's traffic management system does not need the installation of these devices.
	7.6	This section is deleted because this policy is no longer used to identify where these strategies should be implemented.
	7.7	This section is retained in the updated <u>Policy Manual</u> under a new heading concerning trucks.
	7.8	This section is deleted because the Florida Department of Transportation, Alachua County and the City of Gainesville have their own respective project design standards and specifications that adequately address these issues.
	7.9	This section is retained in the updated <u>Policy Manual</u> .
Transit	8.1 and 8.2	These sections are deleted because the City of Gainesville has its own respective project design standards and specifications that adequately address these Regional Transit System issues.
Transportation Enhancement	9.1	This section is deleted because these policies are not currently monitored.
MTPO Design Team	10.1, 10.2, and 10.3	These sections have been deleted since the Design Team no longer exists.
	10.4	This section has been modified to only require scoping for road construction projects that construct new roads, add additional through lanes to existing roads or delete through lanes to existing roads on arterial and collector roadways.
New Policies	-	One new policy is being added that was recently approved concerning "pedestrian traffic signal timing."
	-	One new policy is being recommended that prohibits "monotube" mast arms unless they are specifically approved by the MTPO.

EXHIBIT 4

DRAFT TRANSPORTATION POLICY MANUAL- SUMMARY OVERVIEW

CHAPTER	DESCRIPTION	FDOT	COUNTY	CITY
Chapter II: A. Language Policy	Objective language shall be used for all correspondence, resolutions, ordinances, plans, language at meetings and when updating past work.	No	No	Yes
Chapter III: A. Plan Reviews	All road construction projects that construct new roads, add additional through lanes to existing roads or delete through lanes to existing roads on arterial and collector roadways shall be reviewed by the MTPO and its Advisory Committees at the scoping phase.	Yes	No	No
Chapter V: A. 1. Bicycle Travel Facilities	Instreet bike lanes or wide curb lanes shall be provided on all arterial and collector roadways to accommodate bicycle travel.	Yes	Yes	Yes
Chapter V: A. 2. Bicycle Parking Facilities	MTPO recommends that the City and County require the provision of adequate, secure parking facilities in local zoning regulations.	Not Applicable	Yes	Yes
Chapter V: B. 1. Pedestrian Travel Facilities	Pedestrian travel facilities, such as sidewalks, crosswalks, ramps and refuge islands, shall be provided on all arterial and collector roadways, unless it can be documented that physical space constraints preclude such facilities.	Yes	Yes	Yes
Chapter V: B. 2. Pedestrian Traffic Signal Timing Policy	Along corridors that have high pedestrian volumes, a pedestrian crossing cycle is required, regardless of whether a pedestrian button is pushed, every time the green light cycle would accommodate the pedestrian "walk and don't walk cycle."	Not Applicable	Not Applicable	Yes
Chapter V: C. 1. Primary Streetlighting Fixture	When streetlights are installed, they shall be conventional (cobra head-shaped) "cutoff" luminaire fixtures on those roadways that are not within local government-designated special streetlighting fixture districts.	No	No	Yes
Chapter V: C. 2. Pedestrian-Scale Streetlighting Fixture	When pedestrian-scale lighting is installed, it shall be traditional (acorn-shaped) "cutoff" luminaire fixtures on those roadways that are not within local government-designated special lighting fixture districts.	No	No	Yes
Chapter V: D. 1. b. Traffic Signals Mast Arms City of Gainesville and/or Alachua County Roads	If a mast arm is installed in the Gainesville Metropolitan Area on City of Gainesville or Alachua County roads, it shall be painted black and have horizontal signal heads.	Yes- horizontal signal heads	No	Yes
		No- painted black		
Chapter V: D. 1. d. Traffic Signals Mast Arms Monotube Mast Arms	Monotube mast arms shall not be constructed within the Gainesville Metropolitan Area unless specifically approved by the MTPO.	No	No	Yes



Serving

Alachua • Bradford

Columbia • Dixie • Gilchrist

Hamilton • Lafayette • Madison

Suwannee • Taylor • Union Counties

2009 NW 67th Place, Gainesville, FL 32653-1603 • 352.955.2200

November 21, 2012

TO: Metropolitan Transportation Planning Organization for the Gainesville Urbanized Area

FROM: Marlie Sanderson, Director of Transportation Planning

SUBJECT: **Dr. Kermit Sigmon Citizen Participation Award**

STAFF RECOMMENDATION

Be prepared to vote for one person (anyone is eligible) or group.

BACKGROUND

In 1997, the Metropolitan Transportation Planning Organization approved the annual Dr. Kermit Sigmon Citizen Participation Award. This award is presented each year to someone, selected by the Citizens Advisory Committee, to be recognized for their contribution to the community's transportation planning process.

Previous Recipients

1997- Ruth Sigmon
1998- Perry Maull
1999- South West Alliance for Planning
2000- Var Heyl and Cindy Smith
2001- Chandler Otis
2002- Gerry Dedenbach
2003- Dr. Linda Crider
2004- Dan Burden
2005- Julia Reiskind
2006- Dr. Ruth Steiner
2007- Professor Martin Gold
2008- Susan and Mike Wright
2009- Sharon Hawkey
2010- Mayor Mark Goldstein
2011 Ed Poppell

t:\marlie\ms13\cac\sigmon_award.docx

TECHNICAL ADVISORY COMMITTEE (TAC) ATTENDANCE RECORD

TAC MEMBER AND ALTERNATE	ORGANIZATION	MEETING DATE 5/23/2012	MEETING DATE 9/19/2012	IN VIOLATION IF ABSENT AT NEXT MEETING?
STEVE LACHNICHT Alt - Jeff Hays [Vice Chair] Alt - Chris Dawson Alt - Kathleen Pagan	Alachua County Department of Growth Management Office of Planning and Development	P	P	NO
RICHARD HEDRICK Alt- Chris Zeigler Alt- Michael Fay Alt - Dave Cerlanek Alt- Ha Nguyen [former member]	Alachua County Public Works Department	P	P	NO
DEKOVA BATEY Alt- Vacant	Alachua County/City of Gainesville/MTPO Bicycle/Pedestrian Advisory Board	P	P	NO
Vacant Alt- Steve Kabat	Alachua County/City of Gainesville Arborist	A	A	YES
ERIK BREDFELDT Alt - Dean Mimms Alt - Onelia Lazzari* Alt - Jason Simmons**	City of Gainesville Department of Community Development	P	P	NO
DEBBIE LEISTNER Alt- Don Hambidge Alt- Phil Mann	City of Gainesville Department of Public Works	P	P	NO
JESUS GOMEZ Alt- Doug Robinson, Chair Alt- David Smith	City of Gainesville Regional Transit System	P	P	NO
MICHAEL IGUINA Alt- David Gordon Alt- Laura Aguiar Alt- Allan Penksa	Gainesville/Alachua County Regional Airport Authority	P	A	NO
JOHN GIFFORD Alt - Steve Phelps	Gainesville Regional Utilities	A	A	YES
KAREN TAULBEE Alt - Thomas Hill Alt - Vacant	Florida Department of Transportation	P	P	NO
SCOTT KOONS Alt - Steve Dopp	North Central Florida Regional Planning Council	P	P	NO
BILL REESE~	Santa Fe College Facilities Services	-	-	-
HARREL HARRISON Alt- Edward Gable Alt- David Deas	School Board of Alachua County	A	A	YES
LINDA DIXON Alt - Carol Walker	University of Florida Facilities Planning & Construction Division	P	P	NO
RON FULLER Alt- Scott Fox	University of Florida Transportation & Parking Services	P	E	NO

LEGEND KEY - P = Present A = Absent * = New Member

me\plem13\tac\attendanceTAC.xls

* City of Gainesville Level of Service (LOS) Subcommittee Member; ** LOS Subcommittee Alternate only.

~ Santa Fe College representative currently is a non-voting position.

Attendance Rule:

- Each voting member of the TAC may name one (1) or more alternates who may vote only in the absence of that member on a one vote per member basis.
- Each member of the TAC is expected to demonstrate his or her interest in the TAC's activities through attendance of the scheduled meetings, except for reasons of an unavoidable nature. In each instance of an unavoidable absence, the absent member should ensure that one of his or her alternates attends. No more than three (3) consecutive absences will be allowed by the member. The TAC shall deal with consistent absences and is empowered to recommend corrective action for MTPO consideration.

CITIZENS ADVISORY COMMITTEE (CAC)

ATTENDANCE RECORD

NAME	TERM EXPIRES	9/21/2011	11/30/2011	3/21/2012	5/23/2012	7/25/2012	9/19/2012	PERCENT IF ABSENT AT NEXT MEETING 11/28/2012
Vacant	13-Dec	-	-	-	-	-	-	-
Rob Brinkman	14-Dec	-	-	P	P	P	A	-
E J Bolduc	14-Dec	-	-	P	P	P	P	-
Nelle Bullock	13-Dec	P	P	P	A	P	P	71%
Mary Ann DeMatas	14-Dec	-	-	P	A	P	P	-
<i>Blake Fletcher</i>	<i>13-Dec</i>	<i>P</i>	<i>P</i>	<i>A</i>	<i>P</i>	<i>P</i>	<i>A</i>	<i>57%</i>
<i>Jan Frentzen</i>	<i>12-Dec</i>	<i>A</i>	<i>P</i>	<i>P</i>	<i>E</i>	<i>P</i>	<i>P</i>	<i>57%</i>
Melinda Koken	12-Dec	-	-	P	P	A	P	-
Chandler Otis	12-Dec	P	P	A	P	P	P	71%
John Richter	13-Dec	P	P	P	P	P	E	71%
James Samec	14-Dec	-	-	P	P	P	P	-
Vacant	12-Dec	-	-	-	-	-	-	-
Ruth Steiner	14-Dec	-	-	P	P	P	P	-
Ewen Thomson	13-Dec	P	P	P	P	P	P	86%
Chris Towne	12-Dec	P	P	P	P	P	P	86%

LEGEND KEY - P-Present; E-Excused Absence; A-Unexcused Absence

\\mike\em13\cac\attdd_cac1213.xls

ATTENDANCE RULE

Any appointee of the MTPO to the CAC shall be automatically removed from the committee upon filing with the Chairman of the MTPO appropriate proof that such person has had three (3) or more consecutive unexcused absences, or that the overall attendance record of any such person (including excused and unexcused absences) is less than 66-2/3% for any six (6) month consecutive period or less than 66-2/3% for six (6) consecutive meetings if meetings are not held each month, whichever is longer. Excused absences are here defined to be those absences which occur from regular or special meetings after notification by such person to the Chairman prior to such absence explaining the reasons therefore. All other absences are here defined to be unexcused.

ADDITIONAL NOTES:

- On October 30, 1985, staff asked the CAC to clarify the procedures staff should use to record attendance at CAC meetings. The CAC instructed staff to use the following procedures:
 - all CAC meetings will require mandatory attendance by all members; and
 - attendance is recorded at all CAC meetings, even if a quorum is not present.
- On April 28, 1999, the CAC decided to limit attendance by teleconferencing to medical emergencies only.
- Members denoted in **ITALICS** are at risk for attendance rule violation if the next meeting is missed.

Marlie Sanderson

From: Taulbee, Karen [Karen.Taulbee@dot.state.fl.us]
Sent: Thursday, November 01, 2012 6:32 PM
To: Marlie Sanderson
Subject: Tree Replacement Project - Williston Road

Marlie,

The FDOT has actively been pursuing a tree replacement project on SR 331/Williston Road. The Department has provided state funding to replace the trees.

The FDOT District Two office has a new district-wide landscape contractor and thanks to our district landscape architect the first task work order this fiscal year is the Williston Road tree replacement. District staff coordinated with the City of Gainesville Urban Forester.

The contractor has received a notice to proceed and the replacement project should begin Monday, November 5th. The project will consist of replacing one (1) crepe myrtle and eighty three (83) cathedral oaks. The District will monitor the execution of the tree replacement project and ensure the watering and the establishment of the trees for an optimal result.

The default of the original contractor as well as the bonding agency was an unfortunate circumstance and we appreciate the patience of the public while the Department looked for ways to secure funding and negotiate a new district-wide contract. Please provide this project update to the Metropolitan Transportation Planning Organization as an information item.

Thank you,

Karen S. Taulbee, AICP

Transportation Specialist
Jacksonville Urban Office
904-360-5652
karen.taulbee@dot.state.fl.us

Marlie Sanderson

From: Taulbee, Karen [Karen.Taulbee@dot.state.fl.us]
Sent: Wednesday, November 14, 2012 12:54 PM
To: Marlie Sanderson
Cc: Mike Escalante; Cloud, Barbara
Subject: November MTPO committees and December MTPO
Attachments: MAP21FUNDcodes.pdf

Good morning, Marlie.

The Florida Department of Transportation would like to request placement on the agendas for both the Nov. 28th Technical Advisory Committee and Citizens Advisory Committee meetings and the Dec. 3rd Metropolitan Transportation Planning Organization meeting.

The Department requests consideration of three (3) Transportation Improvement Program amendments. Please see details below for each amendment request.

<u>Project</u>	<u>Description</u>	<u>Request</u>
428804-1	I-75 South of SR 121 to South of SR 222 Resurfacing design in Fiscal Year 2013	Add Preliminary Engineering (PE) for Fund: DIH \$ 10,000 ACNP \$ 83,600
428805-1	I-75 Marion County Line to South of SR 121 Resurfacing design in Fiscal Year 2013	Add Preliminary Engineering (PE) for Fund: DIH \$ 50,000 ACNP \$ 79,100
432242-1	Hull Road From Parking Lot to SR 121/34 th in Fiscal Year 2013 Street	Add Preliminary Engineering (PE) for Bike Trail Fund: TALL \$ 59,146

As a reminder, the Florida Department of Transportation Website for the Tentative Five Year Work Program is located at:

<http://www.d2wpph.com>

Tentative Work Program for all counties for FY 2014 – 2018 is now posted on this website. On the website page, the left dialog box has a tab for **Downloads**. That is the tab to get to the Tentative Work Program by County.

We would like to ensure this website link and the information is also provided to the committees and the MTPO. Please see attached fund code explanations. Funding codes for programs reflect the MAP-21 legislation and program changes.

Karen S. Taulbee, AICP

Transportation Specialist
 Jacksonville Urban Office
 904-360-5652
karen.taulbee@dot.state.fl.us

SCHEDULED 2012 MTPO AND COMMITTEE MEETING DATES AND TIMES

PLEASE NOTE: All of the dates and times shown in this table are subject to being changed during the year.

MTPO MEETING MONTH	TAC [At 2:00 p.m.] CAC [At 7:00 p.m.]	B/PAB [At 7:00 p.m.]	MTPO MEETING
FEBRUARY	<i>CANCELLED</i>	January 26	<i>CANCELLED</i>
APRIL	March 21	March 22	April 2 at 3:00 p.m.
JUNE	May 23	May 24	June 4 at 5:00 p.m.
AUGUST	TAC @ NCFRPC July 25	July 26	August 6 at 3:00 p.m.
OCTOBER	September 19	September 20	October 1 at 3:00 p.m.
DECEMBER	November 28	November 29	December 3 at 5:00 p.m.

Note, unless otherwise scheduled:

1. Shaded boxes indicate the months that we may be able to cancel MTPO meetings if agenda items do not require a meeting and corresponding Advisory Committee meeting may also be cancelled;
2. TAC meetings are conducted at the Gainesville Regional Utilities (GRU) Administration general purpose meeting room;
3. CAC meetings are conducted in the Grace Knight conference room of the County Administration Building; and
4. MTPO meetings are conducted at the Jack Durrance Auditorium of the County Administration Building unless noted.

SCHEDULED 2013 MTPO AND COMMITTEE MEETING DATES AND TIMES

PLEASE NOTE: All of the dates and times shown in this table are subject to being changed during the year.

MTPO MEETING MONTH	TAC [At 2:00 p.m.] CAC [At 7:00 p.m.]	B/PAB [At 7:00 p.m.]	MTPO MEETING
FEBRUARY	January 23	January 24	February 4 at 3:00 p.m.
MARCH	February 20	February 21	March 4 at 3:00 p.m.
JUNE	May 22	May 23	June 3 at 5:00 p.m.
AUGUST	July 24	July 25	August 5 at 3:00 p.m.
SEPTEMBER	September 18	September 19	September 30 at 3:00 p.m.
DECEMBER	November 20	November 21	December 2 at 5:00 p.m.

Note, unless otherwise scheduled:

1. Shaded boxes indicate the months that we may be able to cancel MTPO meetings if agenda items do not require a meeting and corresponding Advisory Committee meeting may also be cancelled;
2. TAC meetings are conducted at the Gainesville Regional Utilities (GRU) Administration general purpose meeting room;
3. CAC meetings are conducted in the Grace Knight conference room of the County Administration Building; and
4. MTPO meetings are conducted at the Jack Durrance Auditorium of the County Administration Building unless noted.

1. The first part of the document discusses the importance of maintaining accurate records of all transactions and activities. It emphasizes the need for transparency and accountability in all financial dealings.

2. The second part of the document outlines the various methods and techniques used to collect and analyze data. It includes a detailed description of the experimental procedures and the statistical analysis performed.

3. The third part of the document presents the results of the study. It includes a series of tables and graphs that illustrate the findings of the research. The data shows a clear trend of increasing activity over time, which is consistent with the hypothesis.

4. The fourth part of the document discusses the implications of the findings. It suggests that the results have significant implications for the field of study and may lead to further research in this area.

5. The fifth part of the document concludes the study. It summarizes the main findings and provides a final statement on the importance of the research.