

Archer Braid Trail

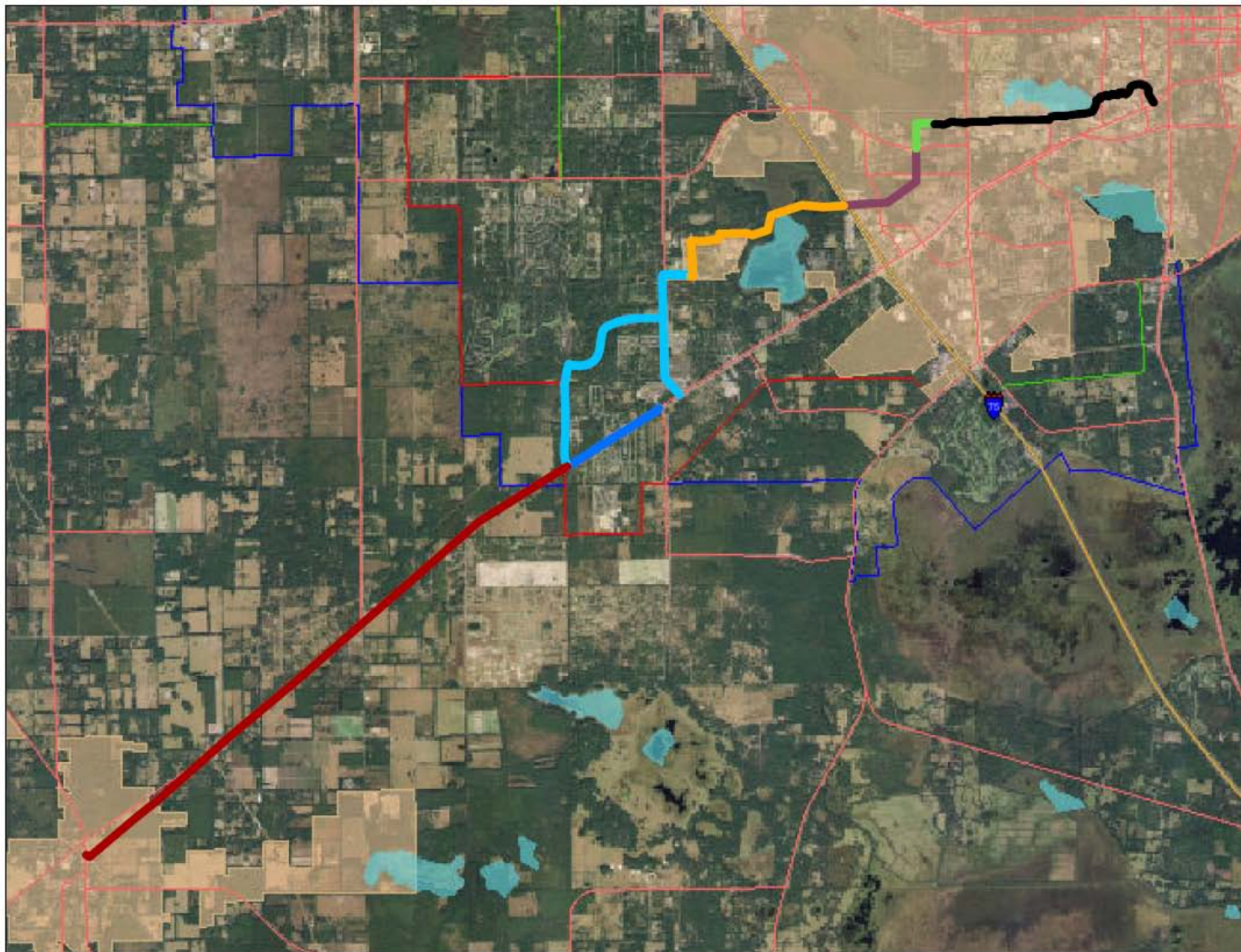
Phase 2: 60% Design Plans

Metropolitan Transportation Planning Organization

February 4, 2013



Archer Braid 2012 Status



Legend

Cross Campus Greenway FY 2014/15

Existing Multiuse Trail

Archer Braid Phase 1 FY 2011/12

Archer Braid Phase 2 FY 2012/13

Celebration Pointe to Construct

Unfunded Segments

Status

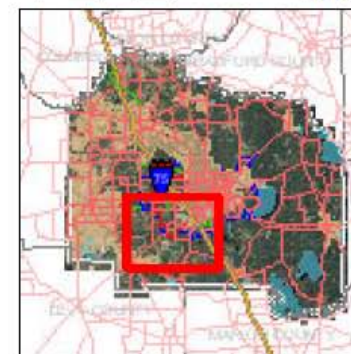
2011 Enhancement App

Butler and Existing Path

Prepared by Alachua County
Growth Management Department
February 2012
Data Valid for
Display Purposes Only



0 0.5 1 2
Miles



SW 91st Street Segment



Existing Conditions – SW 91st Street

- ▶ 100' Right-of-Way
- ▶ No Sidewalks Or Pathway Within Right-of-Way
- ▶ Drainage Swales Both Sides Except At SW 46th Blvd.
- ▶ Raised Median/ Curb And Gutter At SW 46th Blvd.
- ▶ Vegetation And Trees To Back Of Swale
- ▶ Minor Utilities

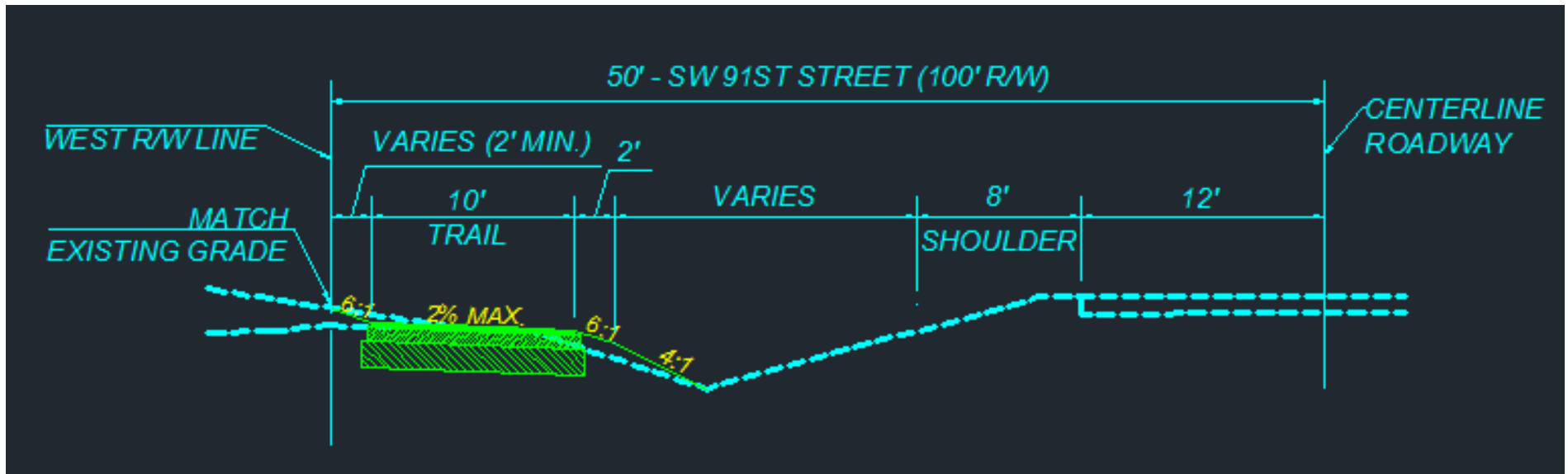


Proposed Alignment – SW 91st Street

- ▶ Trail To Be Located On West Side of Roadway
- ▶ Trail To Be Located Near West R/W Line
- ▶ Most Of The Trail Located 2' Off West R/W Line
- ▶ Exceptions:
 - 10' +/- Off Pavement Edge Along Retention Area
 - Beyond Stop Bar At Intersections

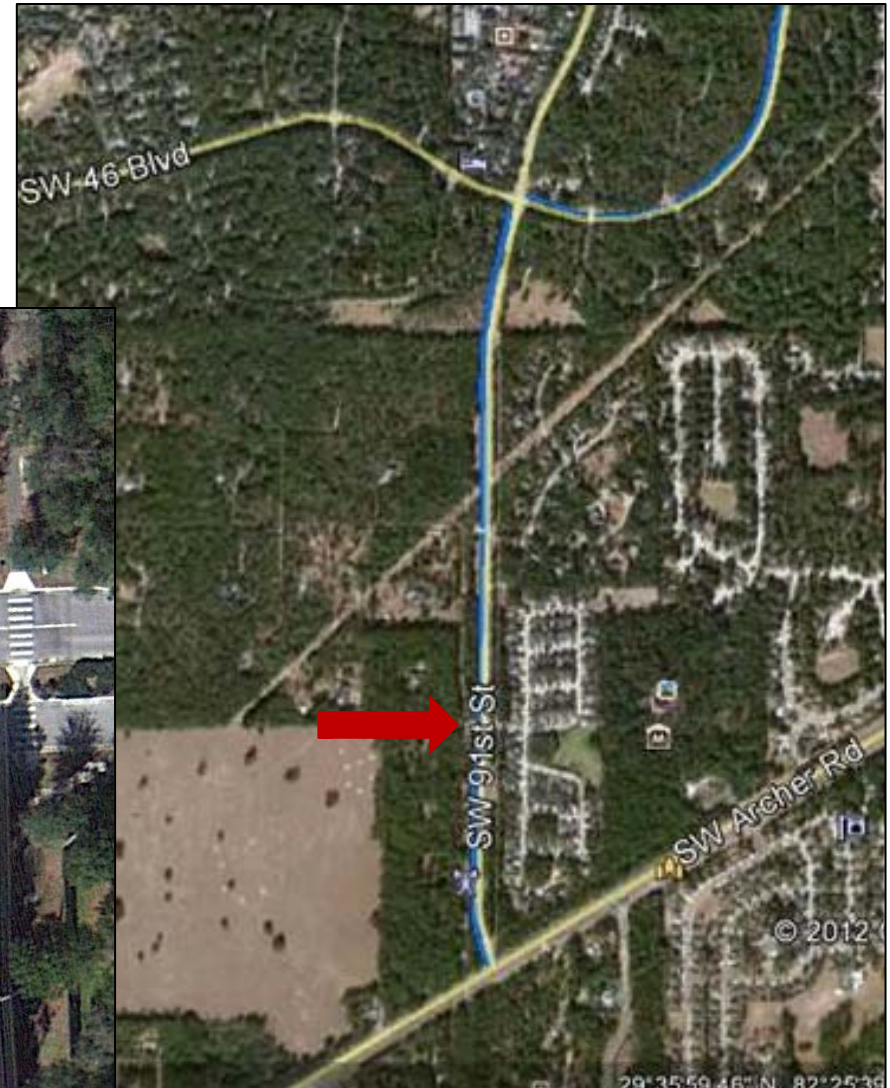


Proposed Typical – SW 91st Street



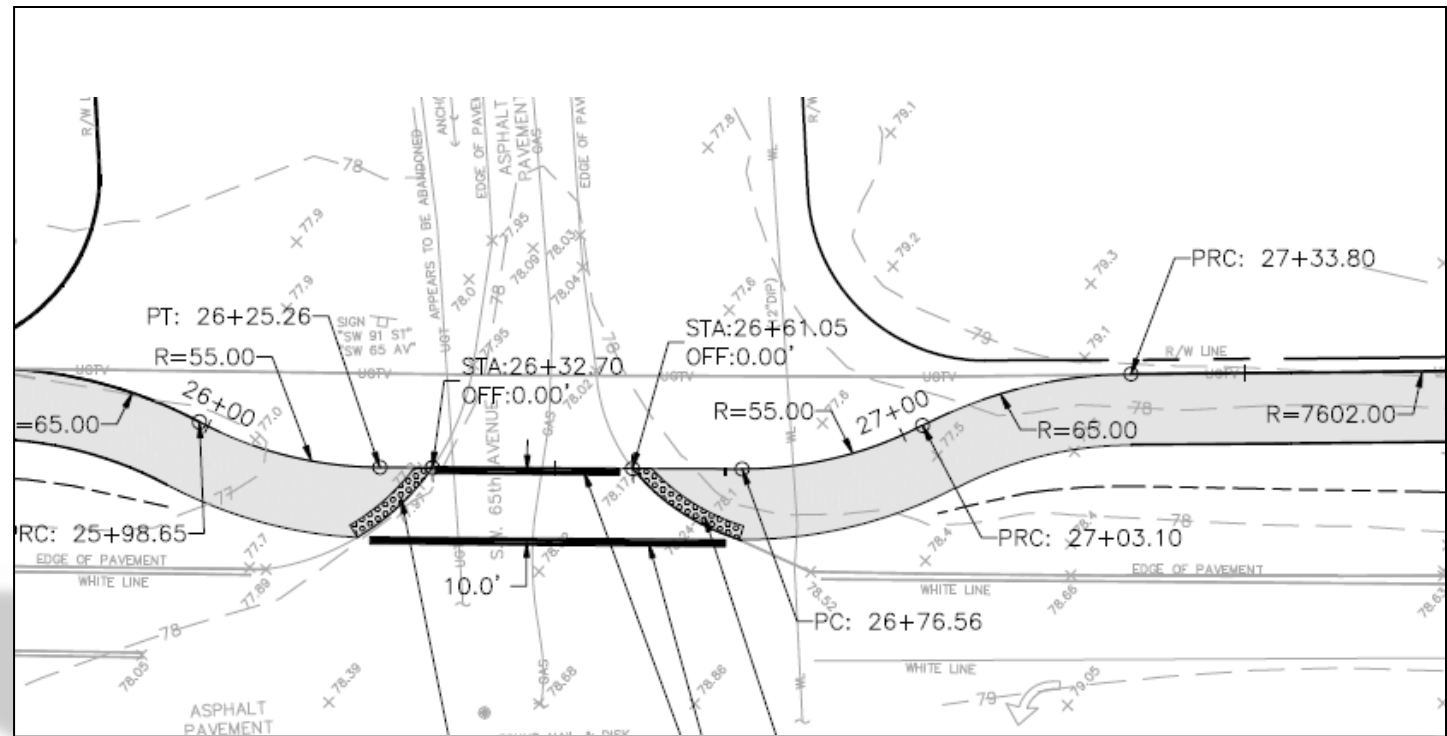
Deviation from the R/W – SW 91st St.

- ▶ SW 65th Avenue
- ▶ Beyond Stop Bar
- ▶ Increase Visibility



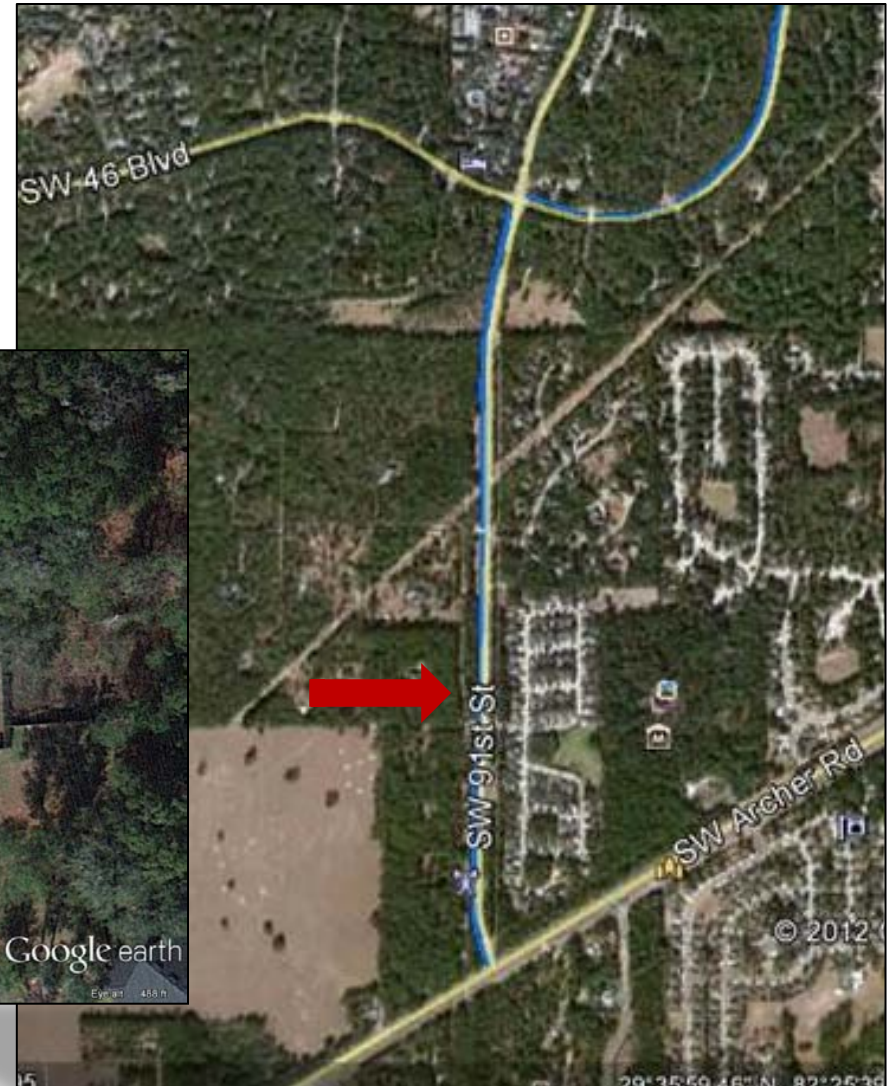
Deviation from the R/W – SW 91st St.

- ▶ SW 65th Avenue Intersection



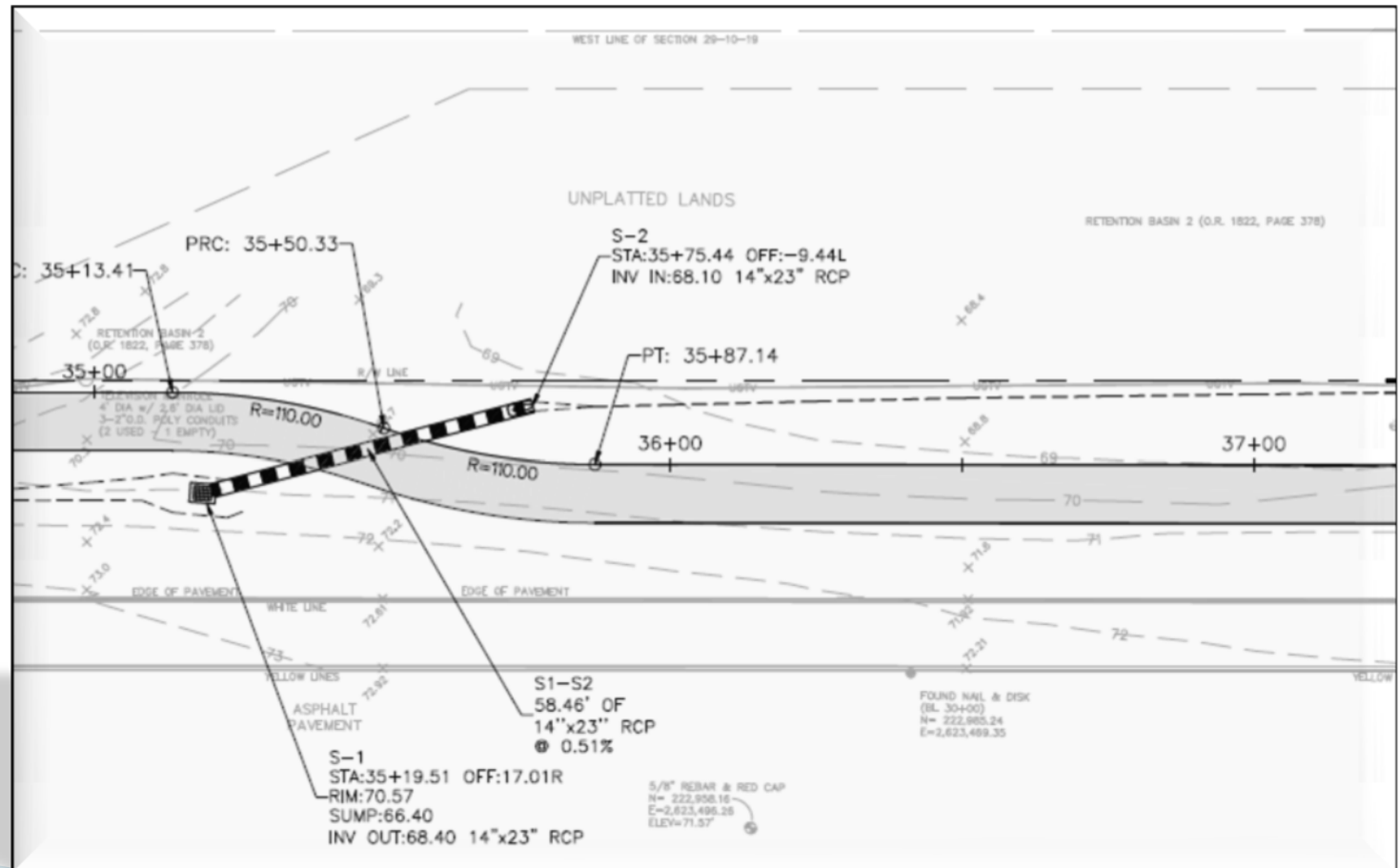
Deviation from the R/W – SW 91st St.

- ▶ Retention Basin 2
- ▶ Capacity Preserved
- ▶ Avoid Volume Reduction



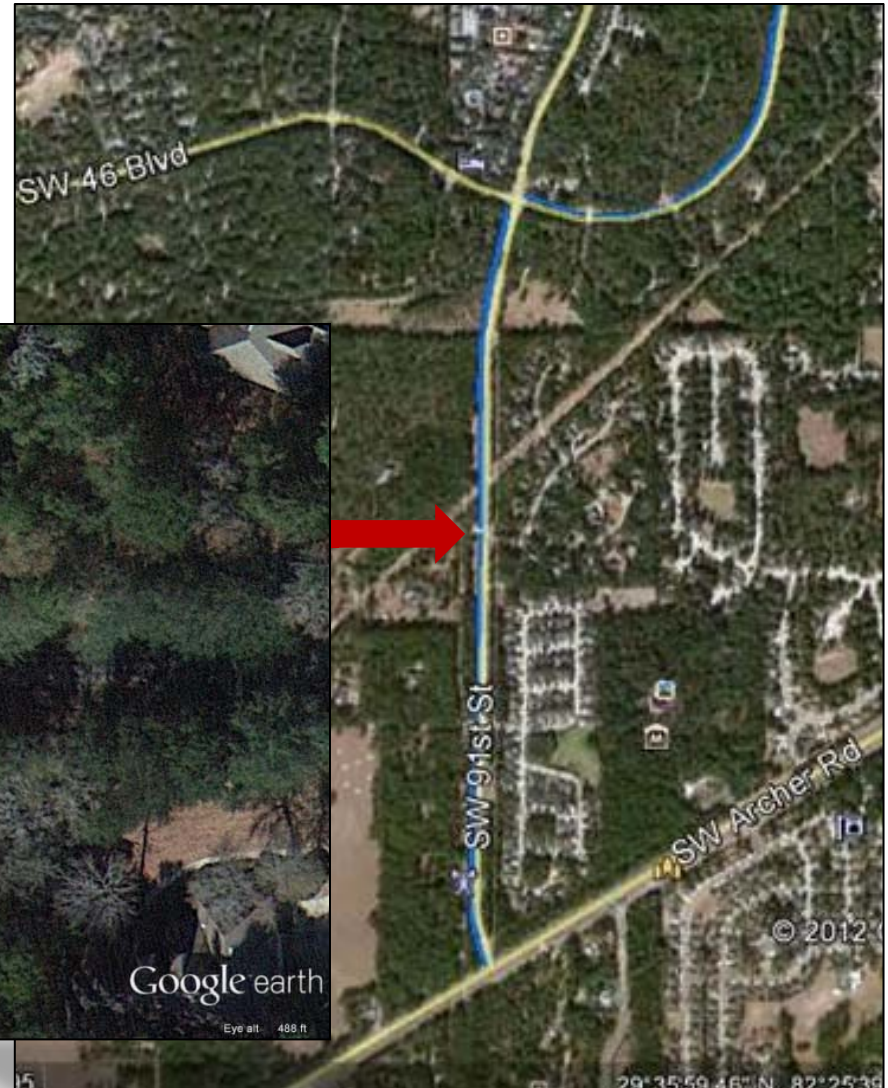
Deviation from the R/W – SW 91st St.

► Retention Basin 2



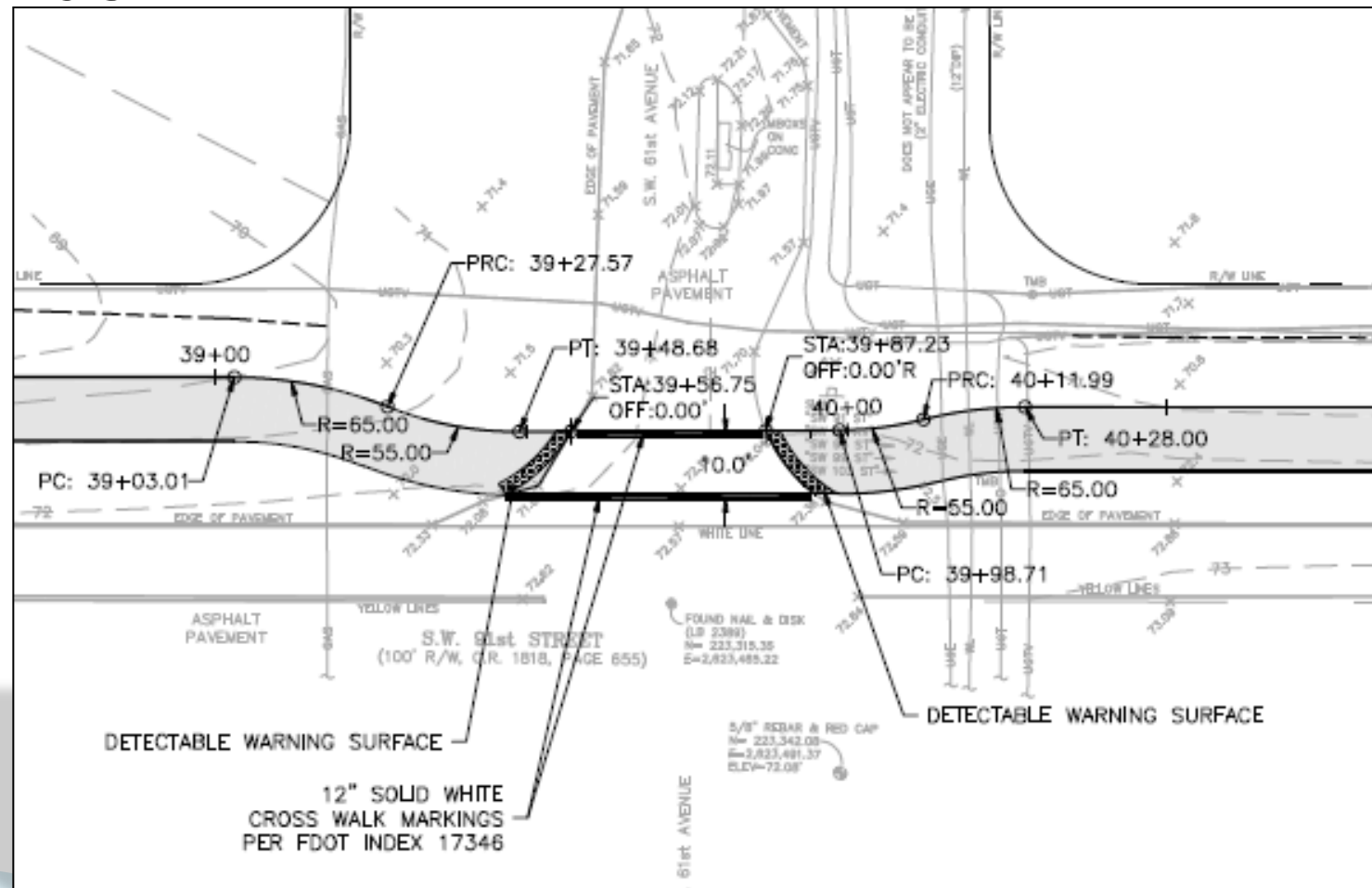
Deviation from the R/W – SW 91st St.

- ▶ SW 61th Avenue
- ▶ Beyond Stop Bar
- ▶ Increase Visibility



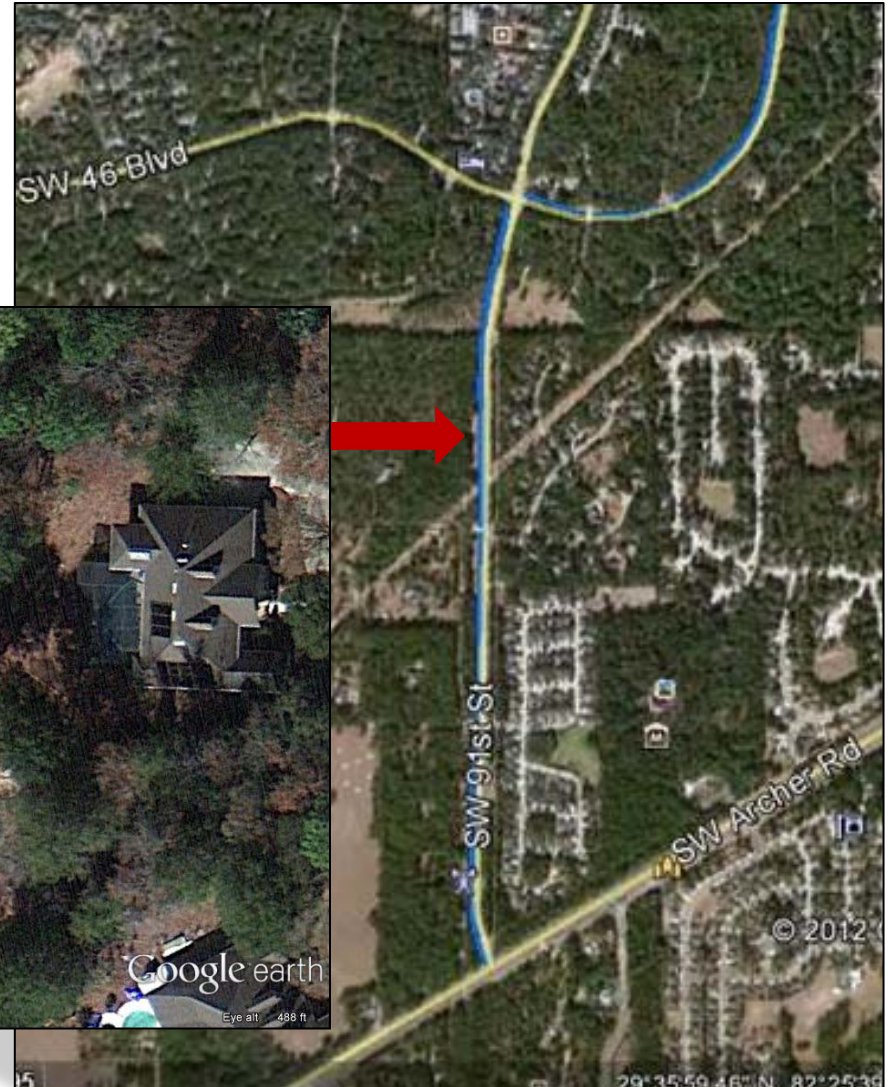
Deviation from the R/W – SW 91st St.

► SW 61st Avenue



Deviation from the R/W – SW 91st St.

- ▶ Retention Basin 1
- ▶ Capacity Preserved
- ▶ Avoid Volume Reduction

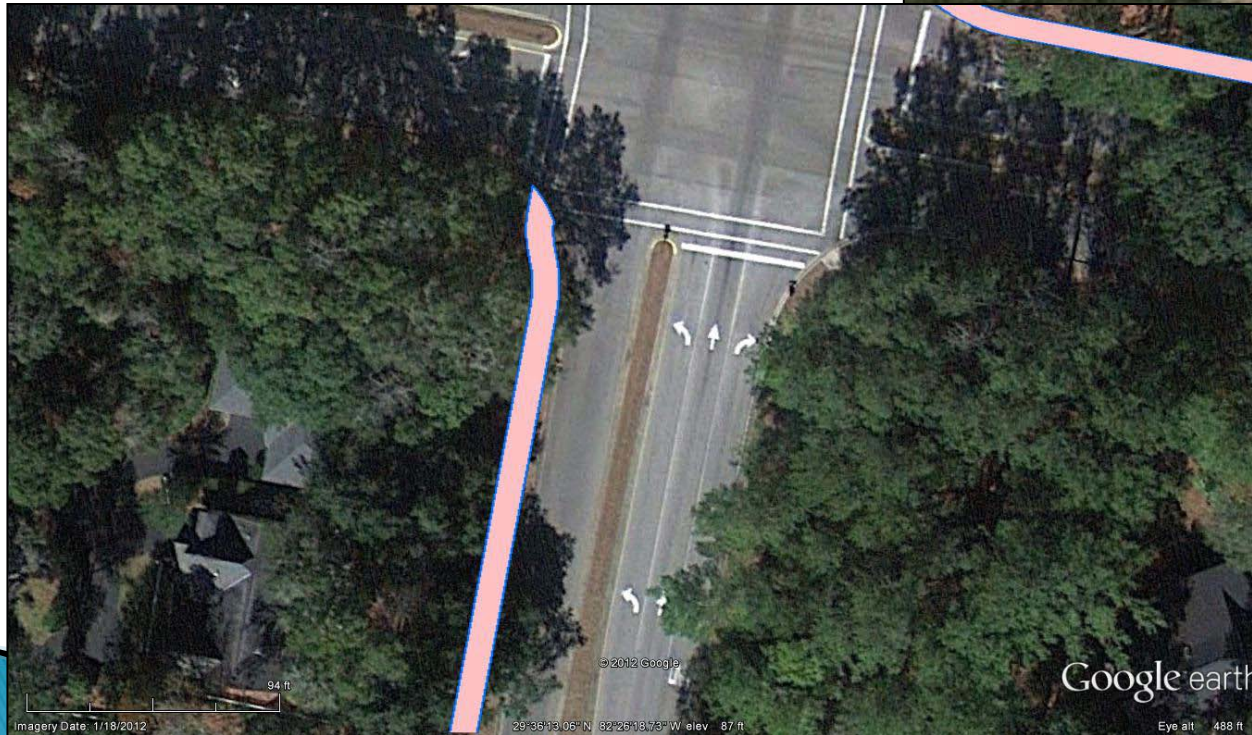
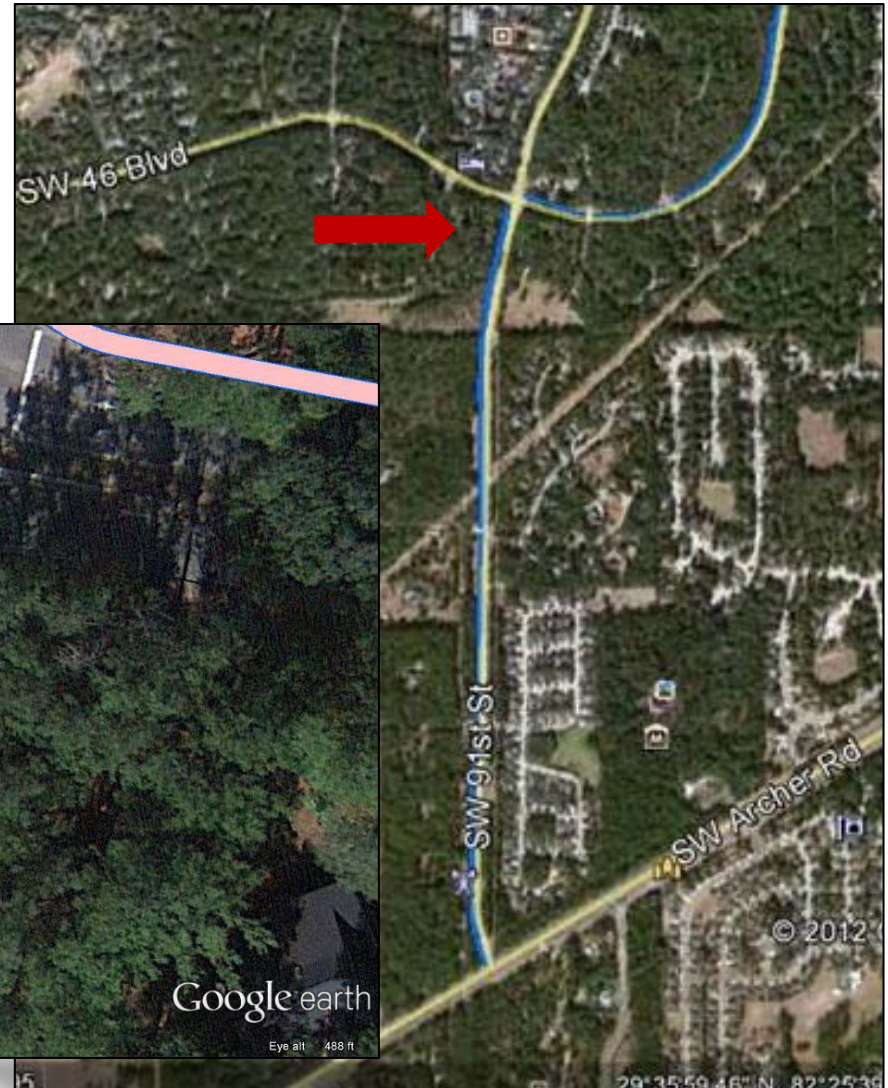


► Retention Basin 1



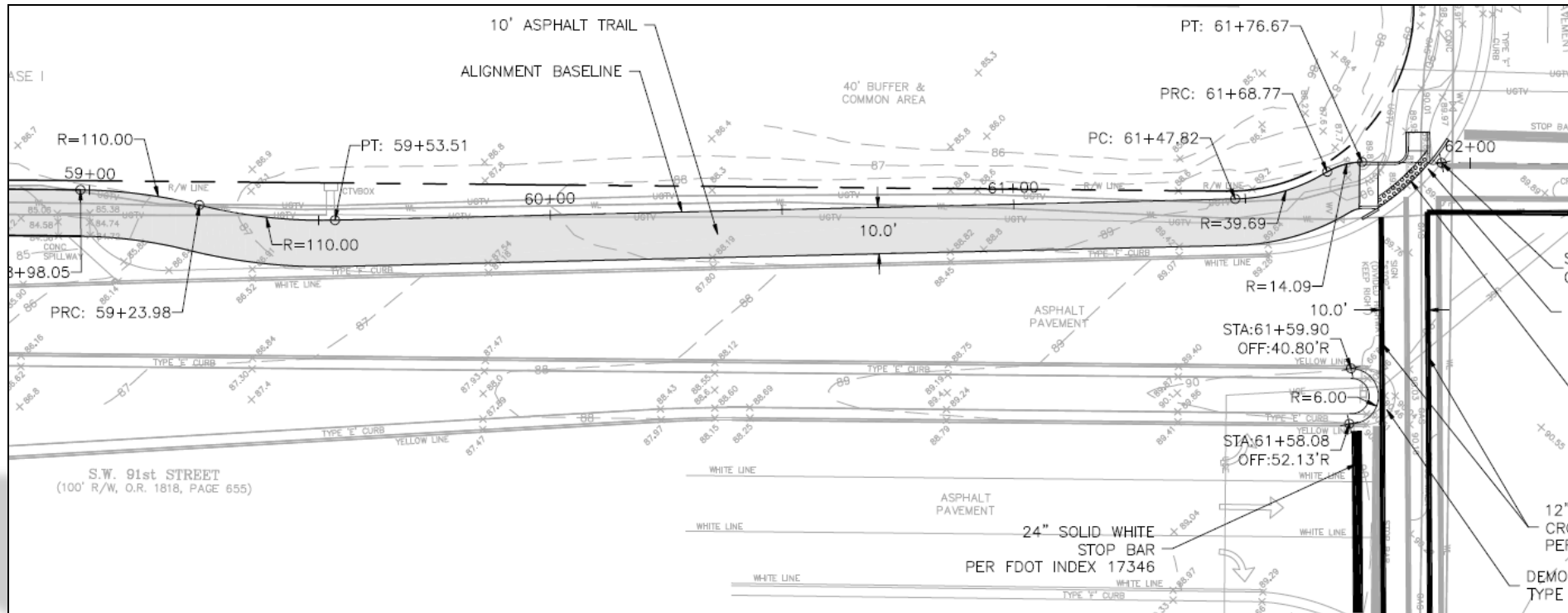
Deviation from the R/W – SW 91st St.

- ▶ Limited Right-of-Way
- ▶ Vegetation Impacts



Deviation from the R/W – SW 91st St.

- SW 91st Street south of SW 46th Boulevard



SW 46th Boulevard Segment



Existing Conditions – SW 46th Blvd.

- ▶ 100' Right-of-Way
- ▶ Centerline Of Roadway 2' South & West Of C/L
- ▶ No Sidewalks Or Trails Within Right-of-Way
- ▶ Drainage Swales Both Sides Except At SW 91st St.
- ▶ Raised Median/ Curb And Gutter At SW 91st St.
- ▶ Vegetation/Trees/Swale Back
- ▶ Minor Utilities

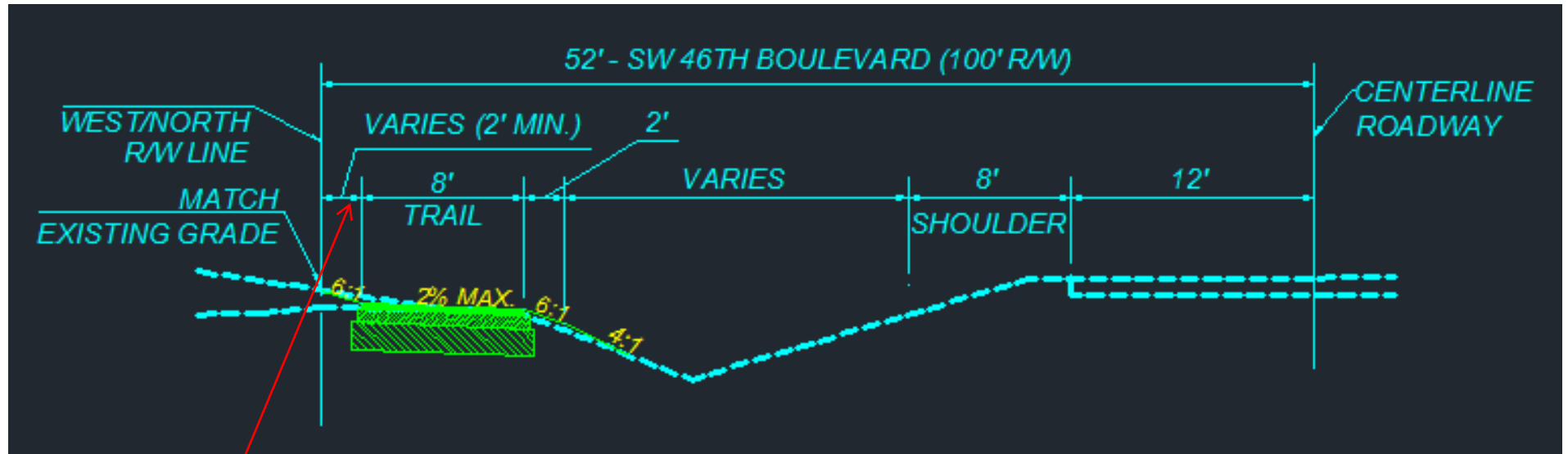


Proposed Alignment – SW 46th Blvd.

- ▶ Trail To Be Located Near North R/W Line
- ▶ Most Of The Trail Located 2' Off North R/W Line
- ▶ Exceptions:
 - Meander To Avoid Obstacles Near SW 91st Street.
 - Beyond Areas Of Steep Embankment
 - 10' South Of North R/W Line Near SW 75th Street



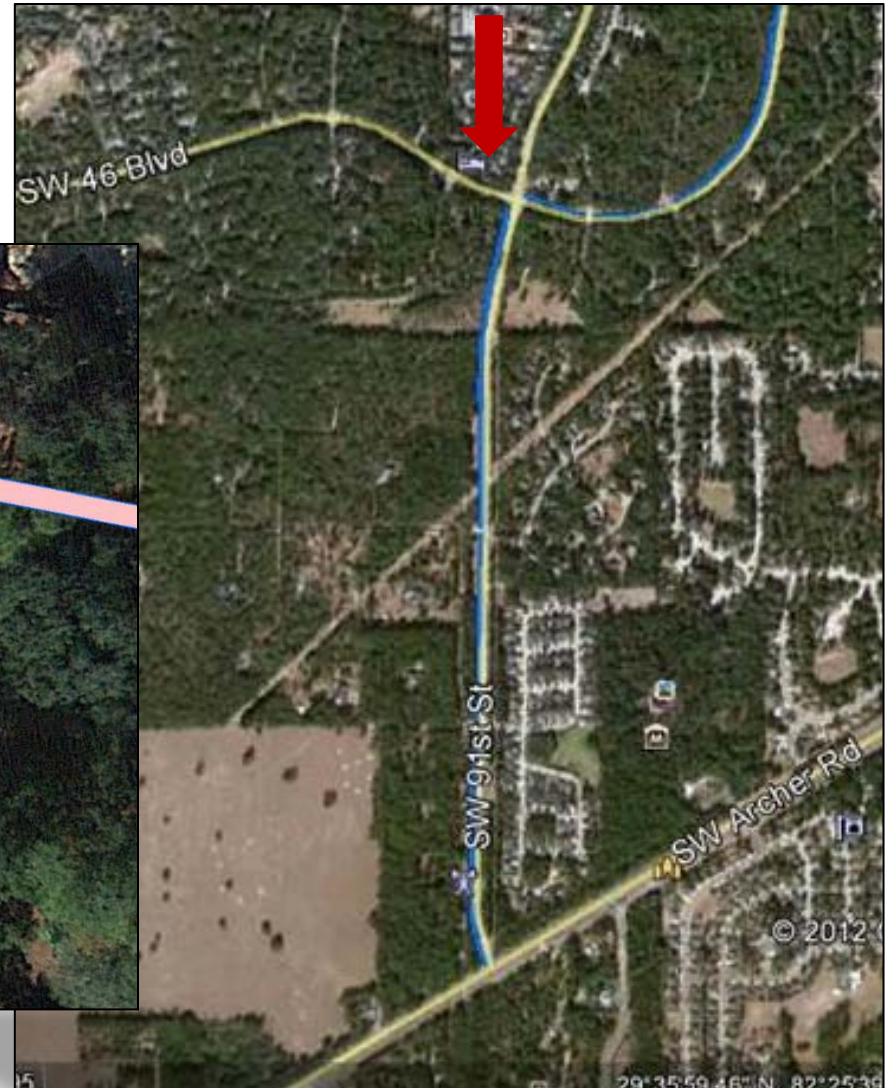
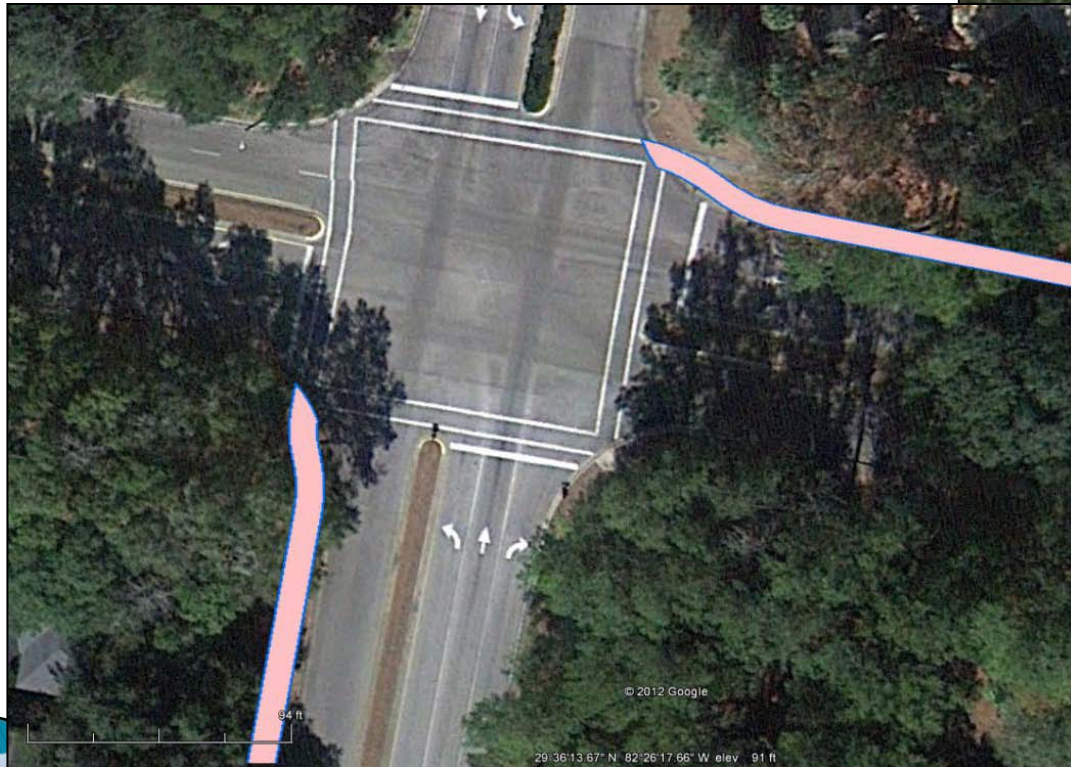
Proposed Typical – SW 46th Blvd.



January 22nd BoCC
moves path to 2' from
the right-of-way line
wherever possible

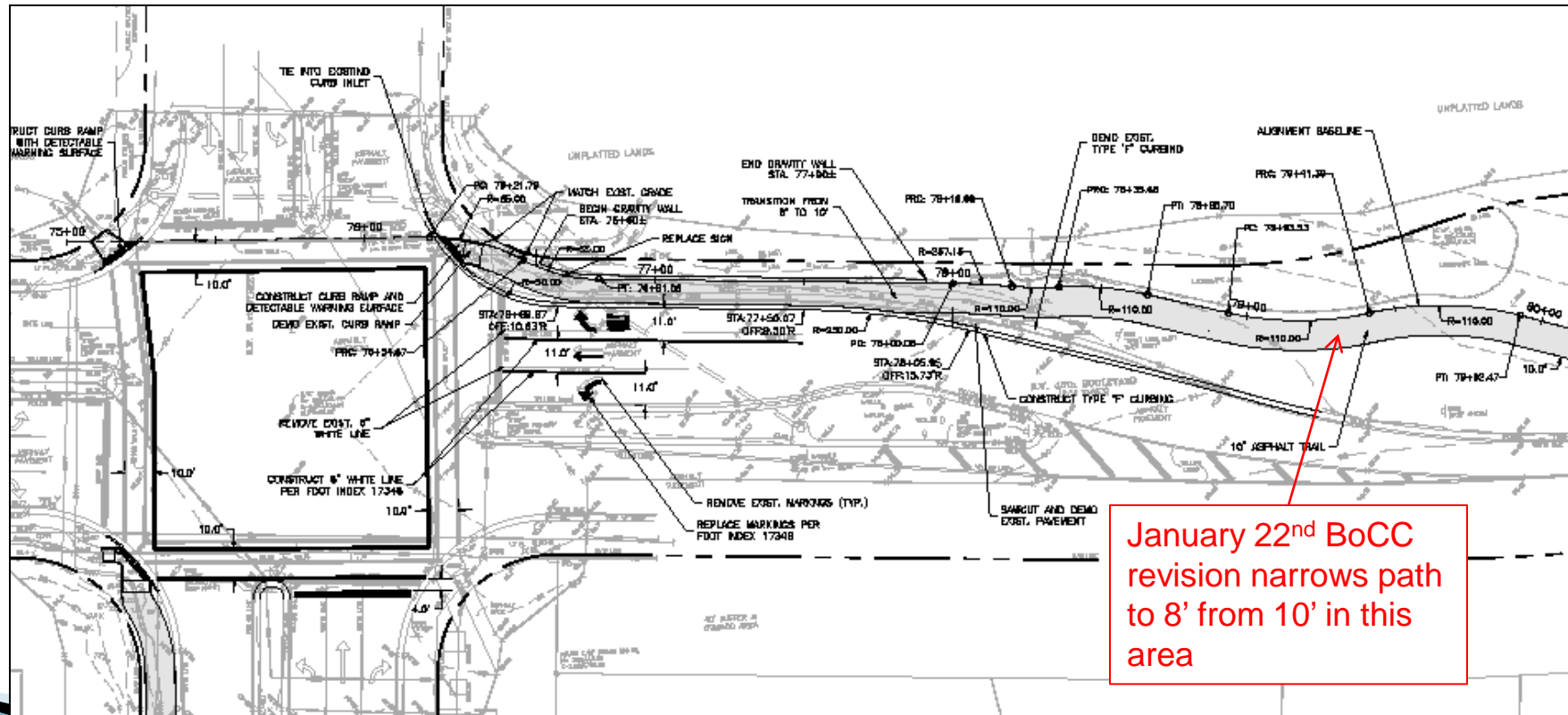
SW 91st Street/SW 46th Blvd. Intersection

- ▶ Limited Right-of-Way
- ▶ Grade Change



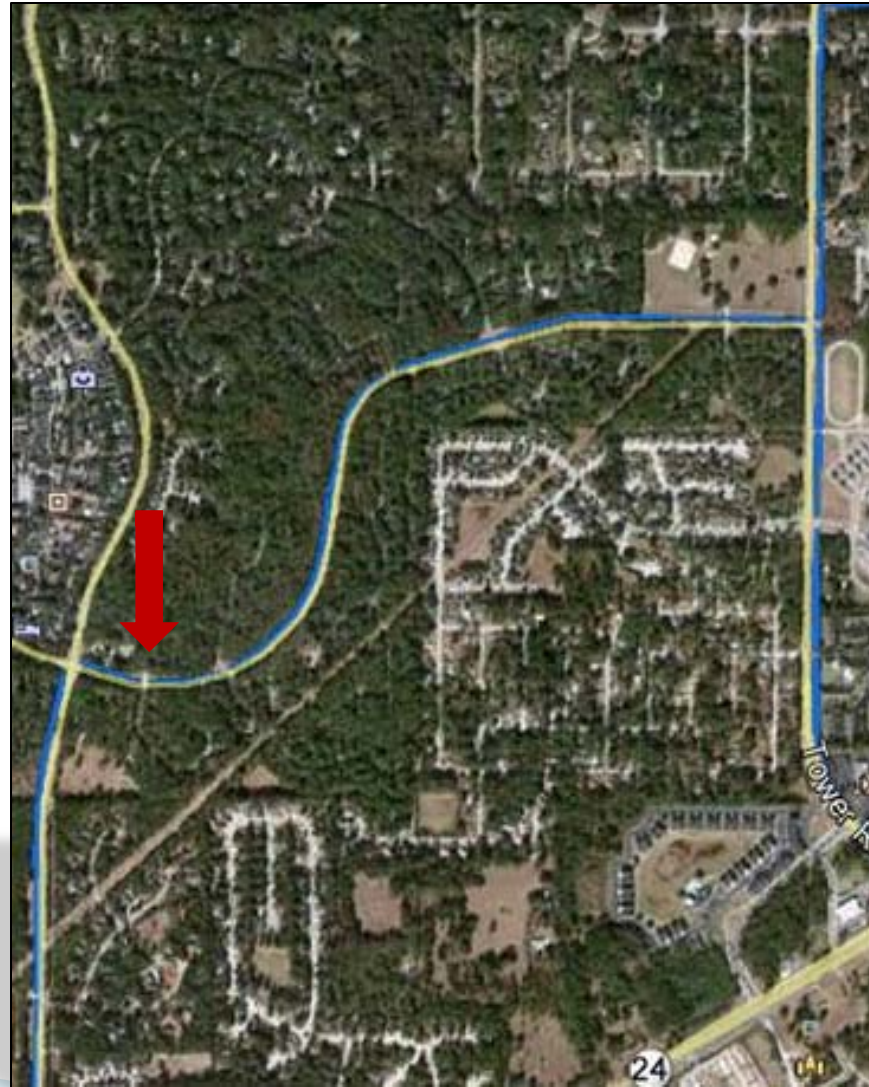
SW 91st Street/SW 46th Blvd. Intersection

- ▶ Limited Right-of-Way
- ▶ Grade Change



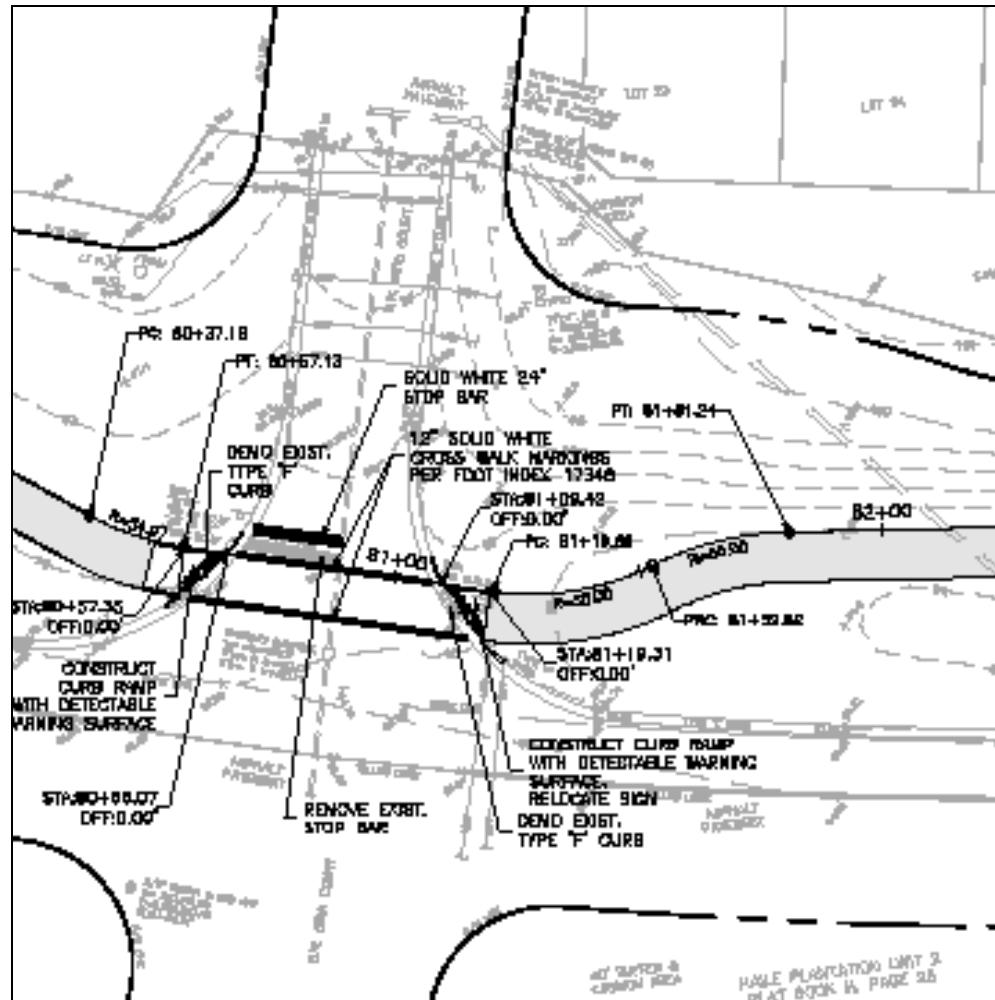
Deviation from the R/W – SW 46th Blvd.

- ▶ SW 88th Court
- ▶ Beyond Stop Bar
- ▶ Increase Visibility



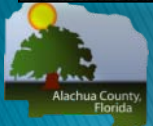
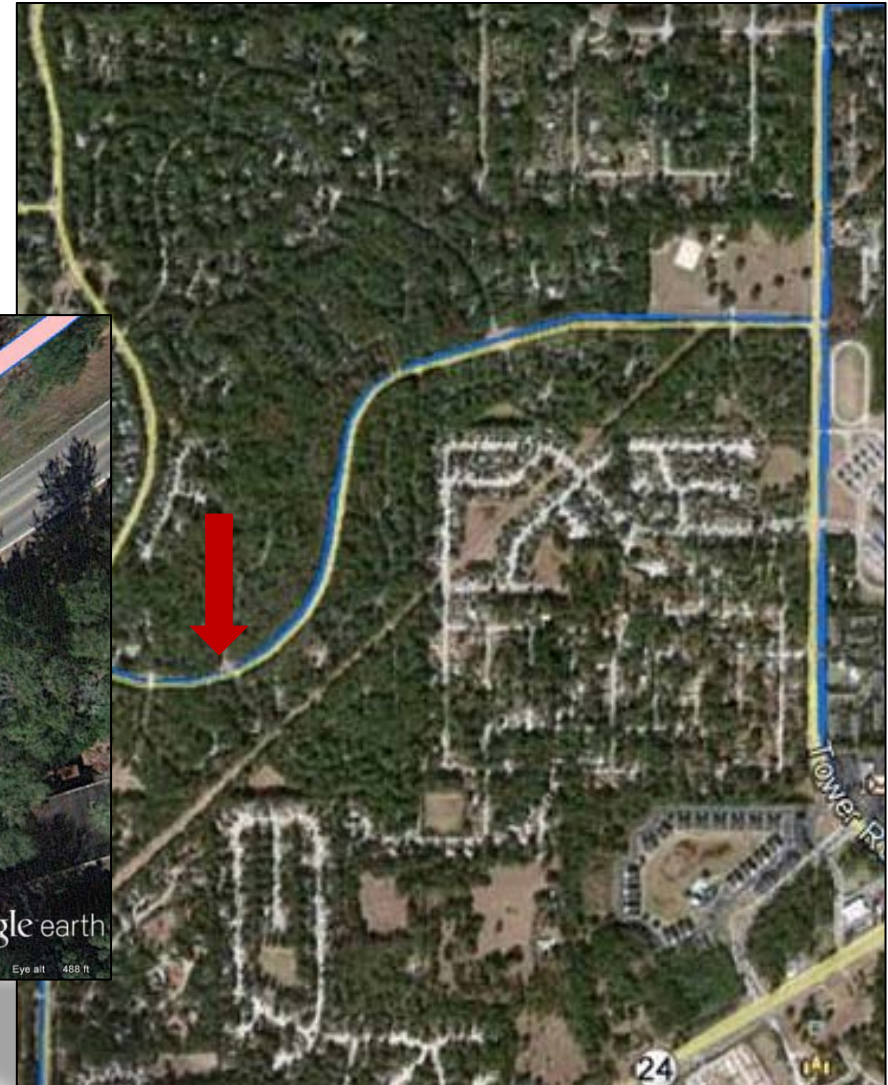
Deviation from the R/W – SW 46th Blvd.

► SW 88th Court



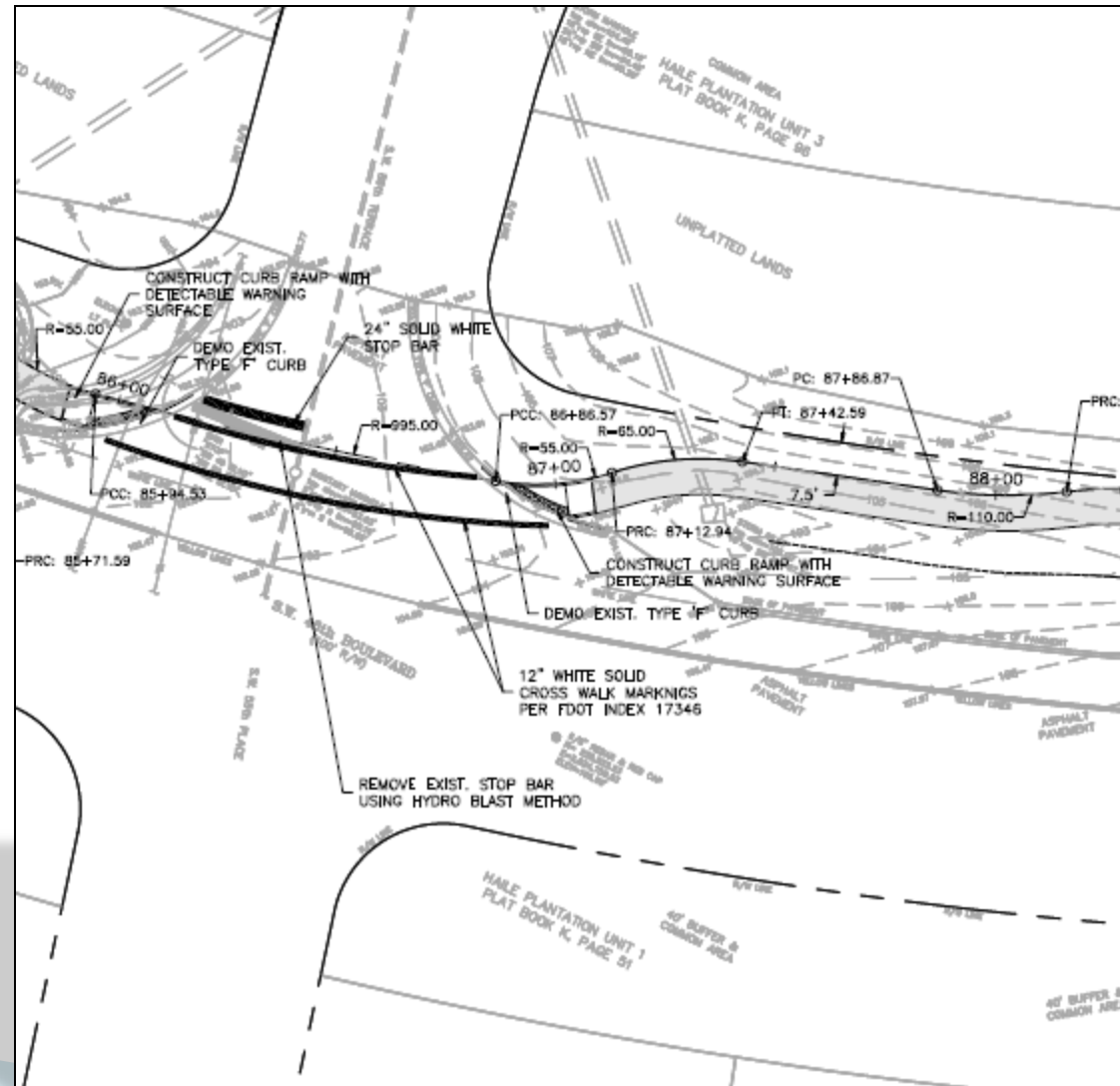
Deviation from the R/W – SW 46th Blvd.

- ▶ SW 86th Terrace
- ▶ Beyond Stop Bar
- ▶ Increase Visibility



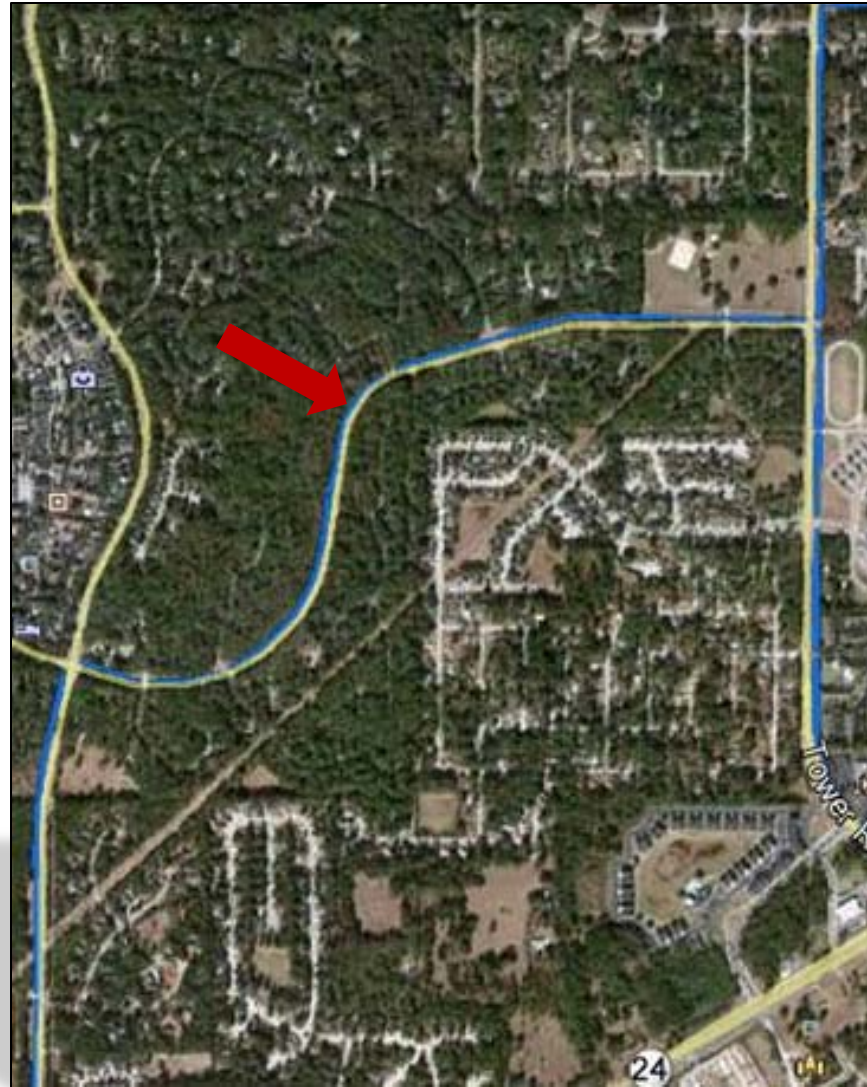
Deviation from the R/W – SW 46th Blvd.

► SW 86th Terrace



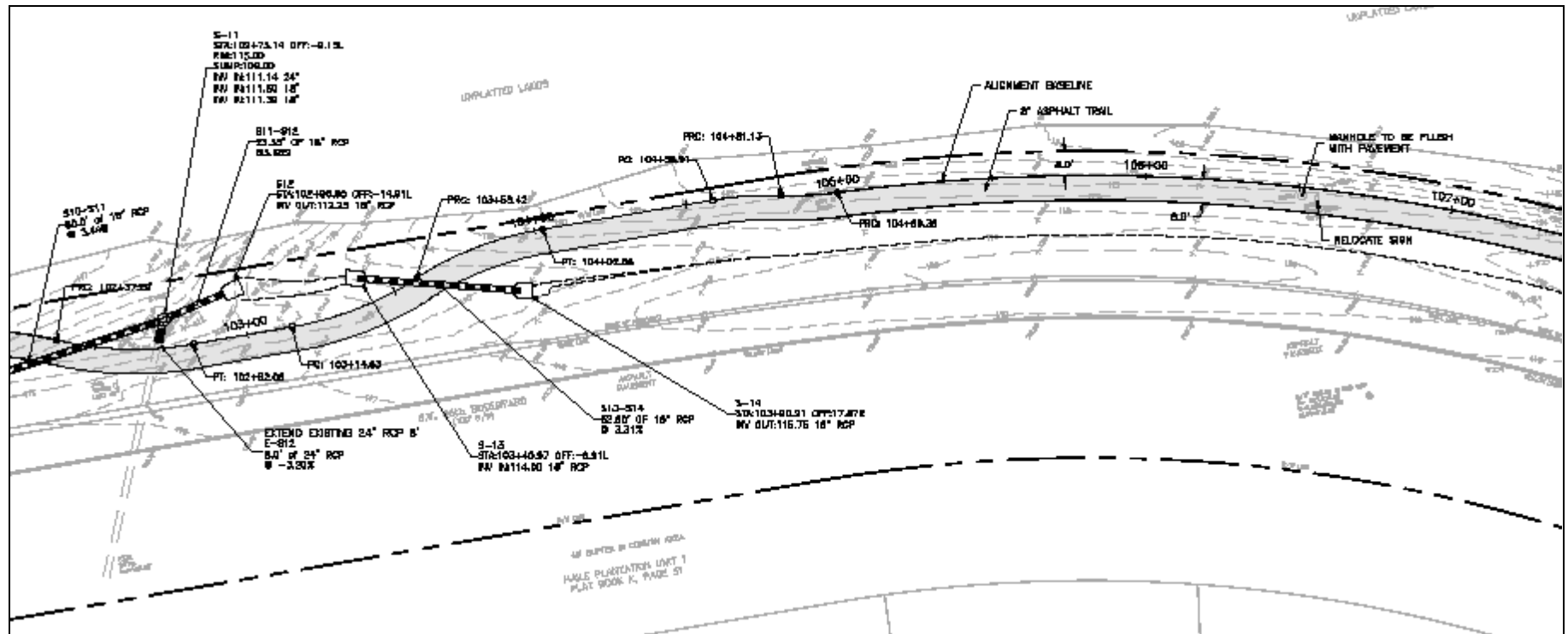
Deviation from the R/W – SW 46th Blvd.

- ▶ North/South “Leg”
- ▶ Drainage Ditch
- ▶ Steep Grades



Deviation from the R/W – SW 46th Blvd.

► North/South “Leg”



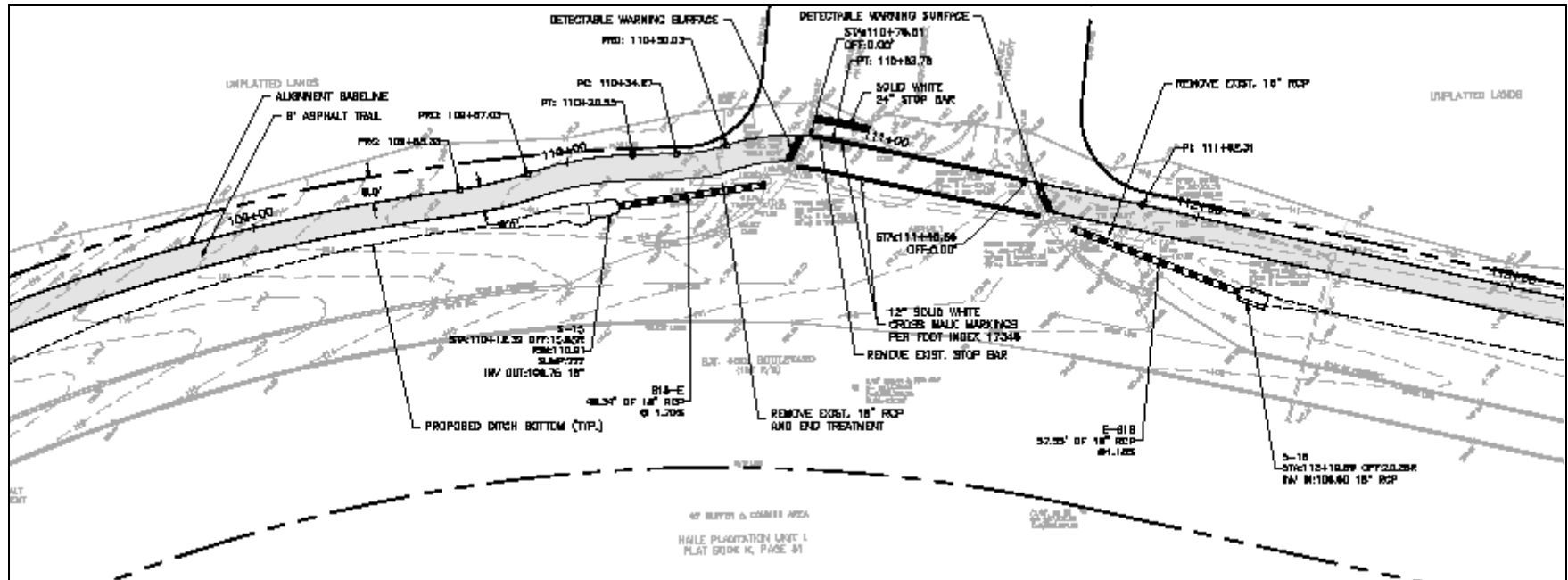
Deviation from the R/W – SW 46th Blvd.

- ▶ SW 83rd Terrace
- ▶ Beyond Stop Bar and Behind Storm Inlet
- ▶ Increase Visibility



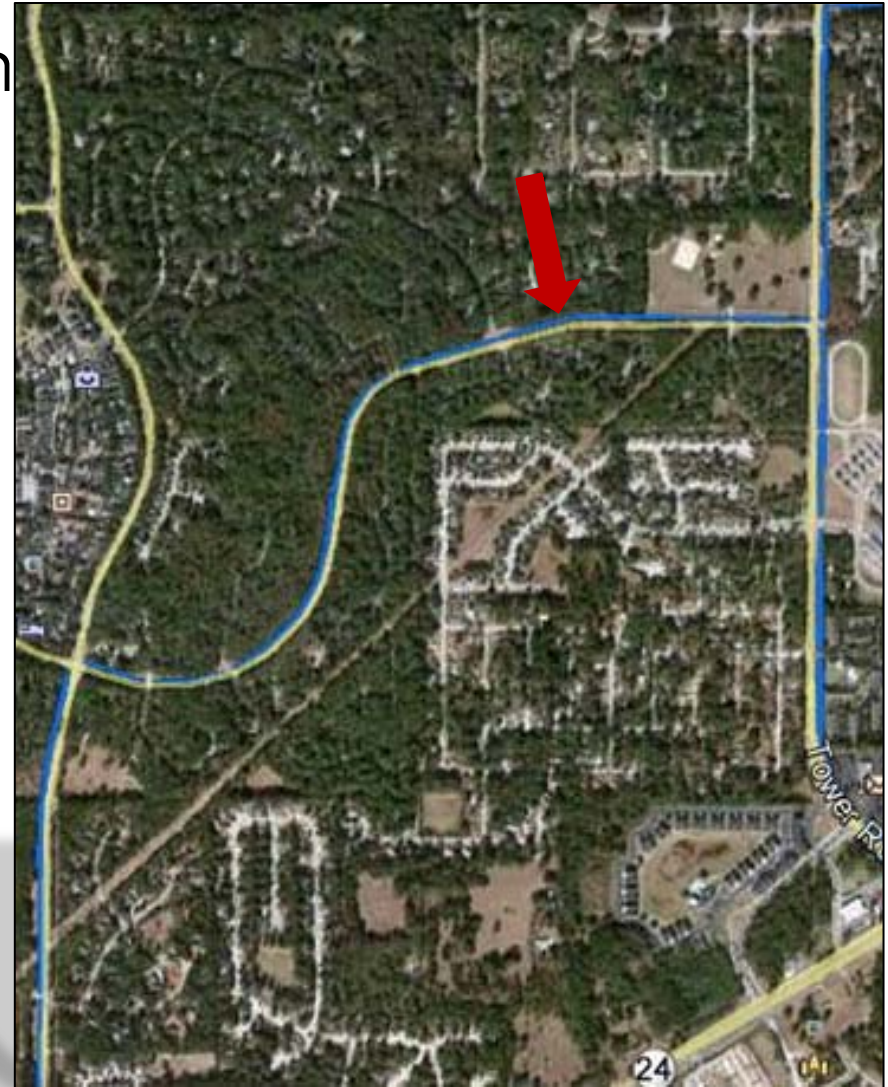
Deviation from the R/W – SW 46th Blvd.

► SW 83rd Terrace



Deviation from the R/W – SW 46th Blvd.

- ▶ SW 81st Terrace and Ditch Crossing
- ▶ Beyond Stop Bar
- ▶ Increase Visibility



► SW 81st Terrace



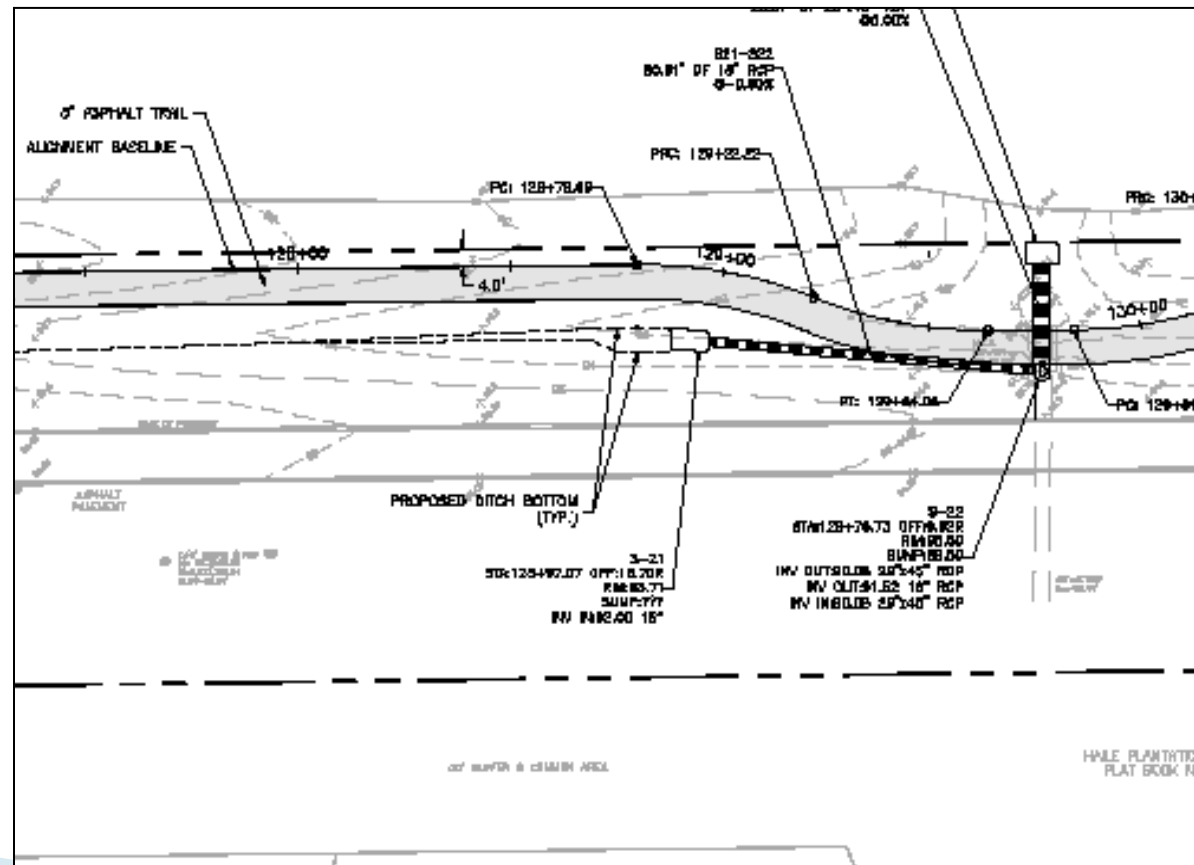
Deviation from the R/W – SW 46th Blvd.

- ▶ Ditch Crossing at Pasture
- ▶ No Need for Handrail



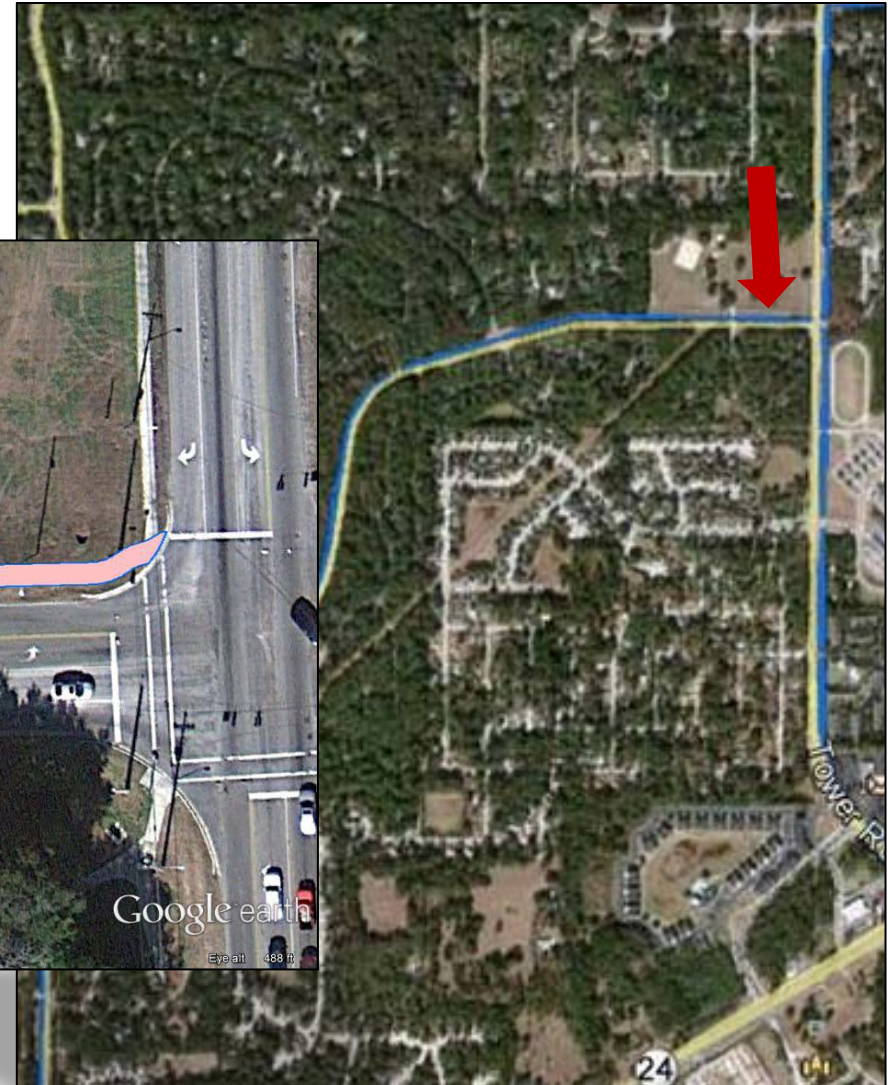
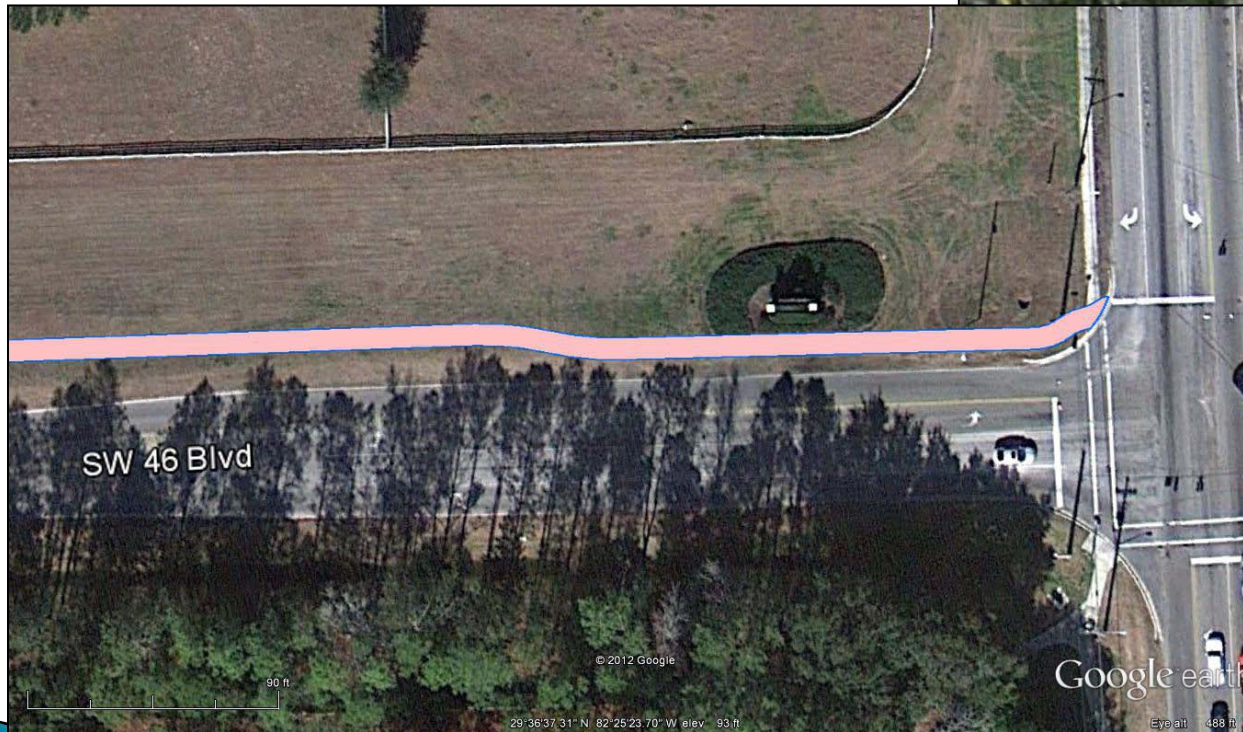
Deviation from the R/W – SW 46th Blvd

► Ditch Crossing



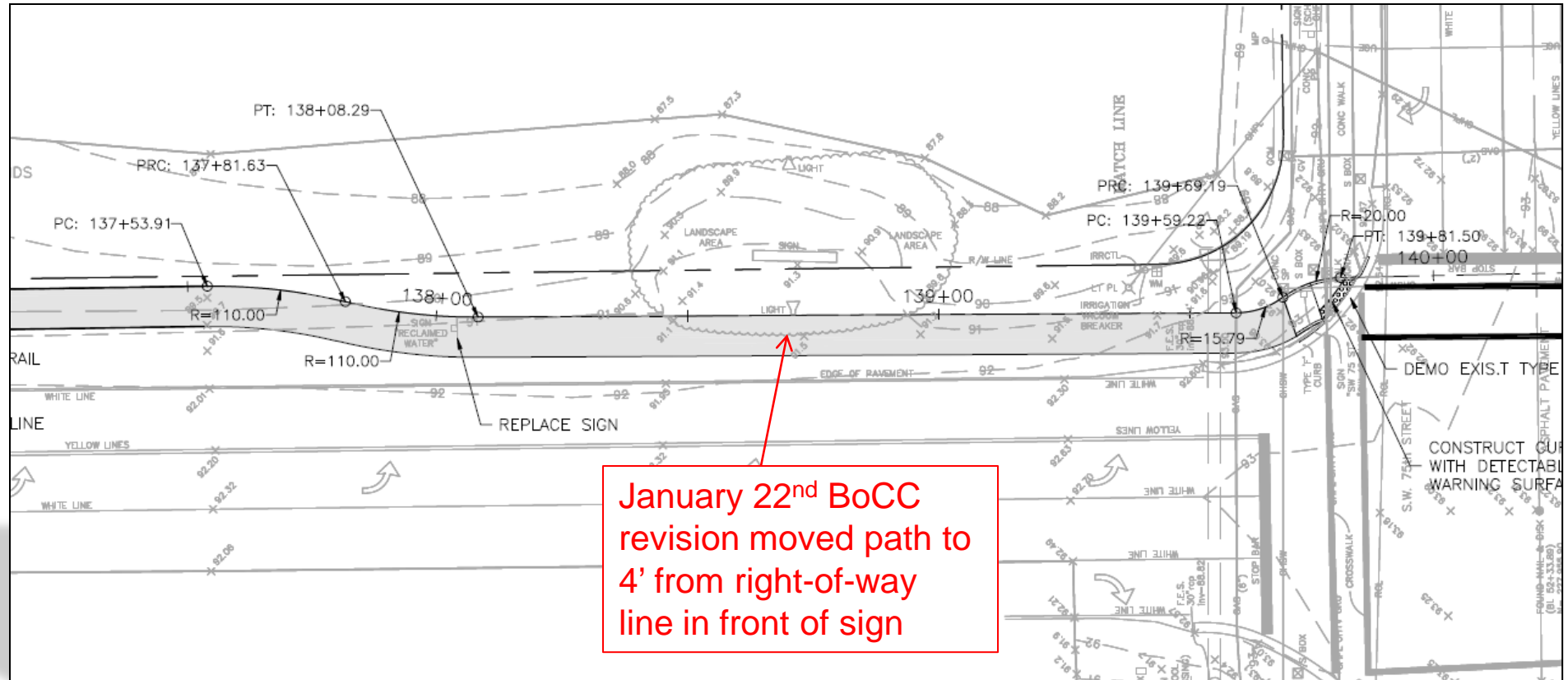
Deviation from the R/W – SW 46th Blvd.

- ▶ Tower Road Intersection
- ▶ Haile Plantation Signage



Deviation from the R/W – SW 46th Blvd.

► Tower Road Intersection



SW 75th Street and SW 41st Place Segments



Existing Conditions – SW 75th Street

- ▶ Right-of-Way Varies From 110' to 167'
- ▶ 5' Sidewalks Within Right-of-Way
- ▶ Drainage Swales Both Sides Except @ Archer Rd.
- ▶ Urbanized With Minimal Vegetation And Trees
- ▶ Major Utilities

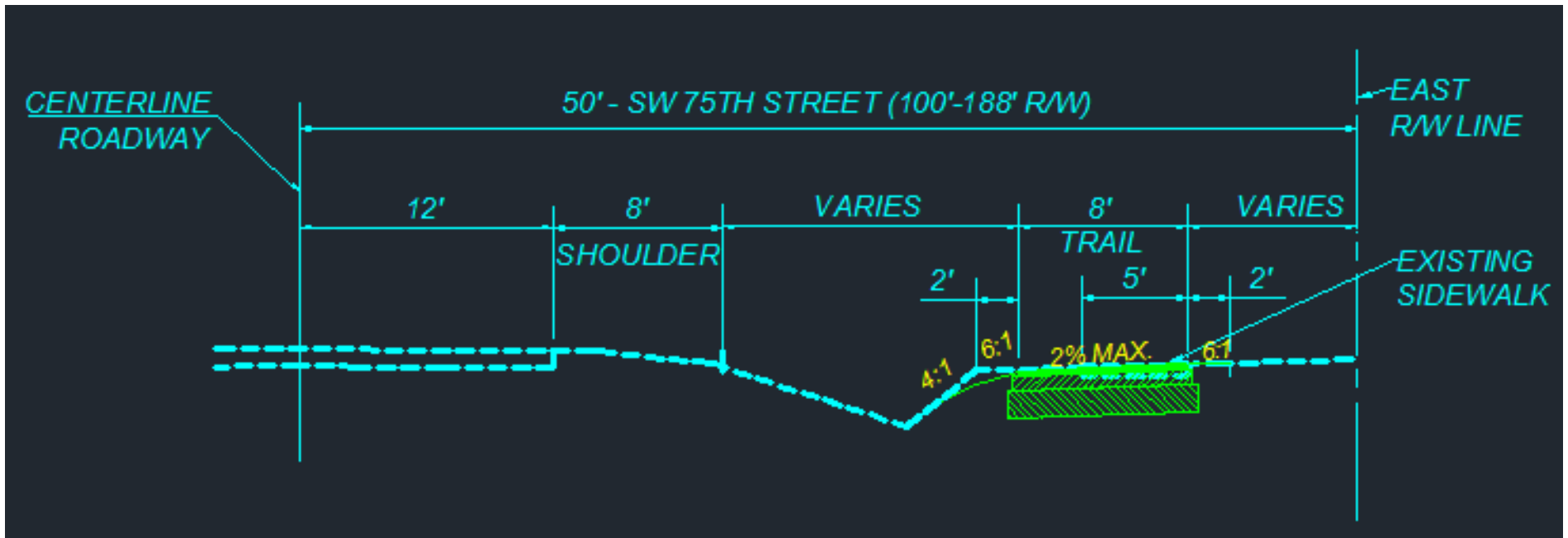


Proposed Alignment – SW 75st Street

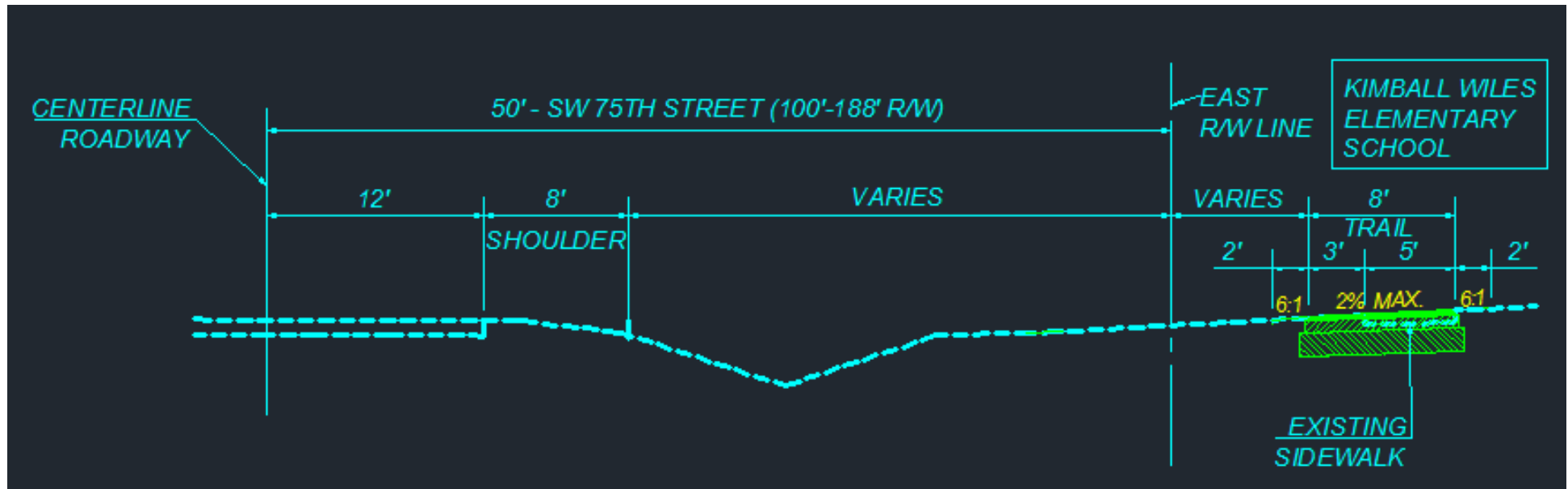
- ▶ Trail To Be Located On East Side of Roadway
- ▶ East Side Of Trail Coincides With Existing Sidewalk
- ▶ Exceptions:
 - Kimball Elementary School/Outside R/W/At Existing Sidewalk Edge
 - Beyond Stop Bar At Intersections



Proposed Typical 1 – SW 75th Street



Proposed Typical 2 – SW 75th Street



Existing Conditions – SW 41st Place

- ▶ 80' Right-of-Way
- ▶ No Sidewalks or Trails Within Right-of-Way
- ▶ Poorly Defined Drainage Swales
- ▶ FEMA 100 Year Flood Plain
- ▶ Vegetation and Trees to Back of Swale
- ▶ Minimal Horizontal and Vertical Geometry Change
- ▶ Minor Utilities

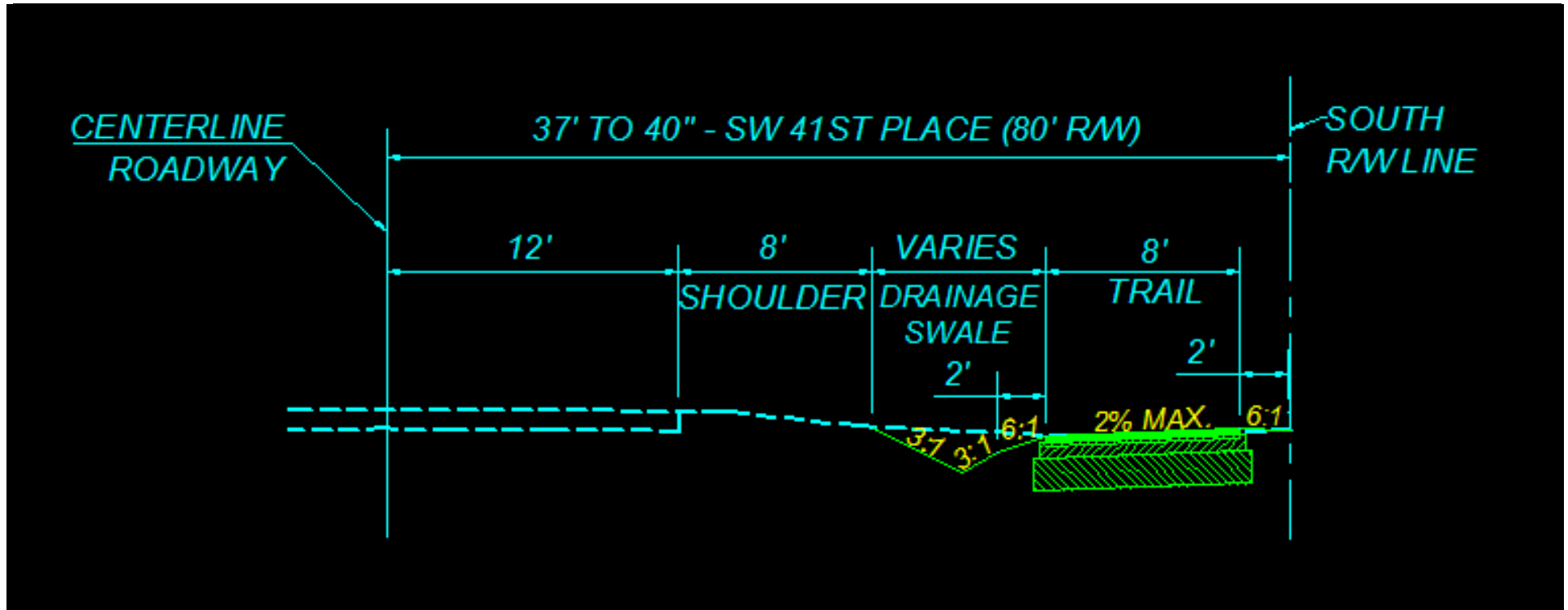


Proposed Alignment – SW 41st Place

- ▶ Trail To Be Located On South Side Of Roadway
- ▶ Trail Located Along South Right-of-Way Line
- ▶ Exceptions:
 - Near SW 75th Intersection
 - Beyond Stop Bar At Intersections



Proposed Typical – SW 41st Place



Project Schedule

- ▶ February 4th – Metropolitan Transportation Planning Organization
- ▶ March 2013 – Final Plans to FDOT
- ▶ April 2013 – Bidding
- ▶ Fall 2013 - Construction



Questions

Archer Braid Trail

