



Serving
Alachua • Bradford
Columbia • Dixie • Gilchrist
Columbia • Lafayette • Madison
Suwannee • Taylor • Union Counties

2009 NW 67th Place, Gainesville, FL 32653-1603 • 352.955.2200

April 25, 2013

TO: Columbia, Hamilton and Suwannee County Transportation Disadvantaged Coordinating Boards

FROM: Lynn Godfrey, AICP, Senior Planner

SUBJECT: Meeting Announcement

The Columbia, Hamilton and Suwannee County Transportation Disadvantaged Coordinating Boards will meet concurrently on Friday, May 3, 2013 at 2:00 p.m. in the **Florida Department of Transportation District II Office, Madison Meeting Room located at 1109 South Marion Avenue, Lake City, Florida (location map attached).**

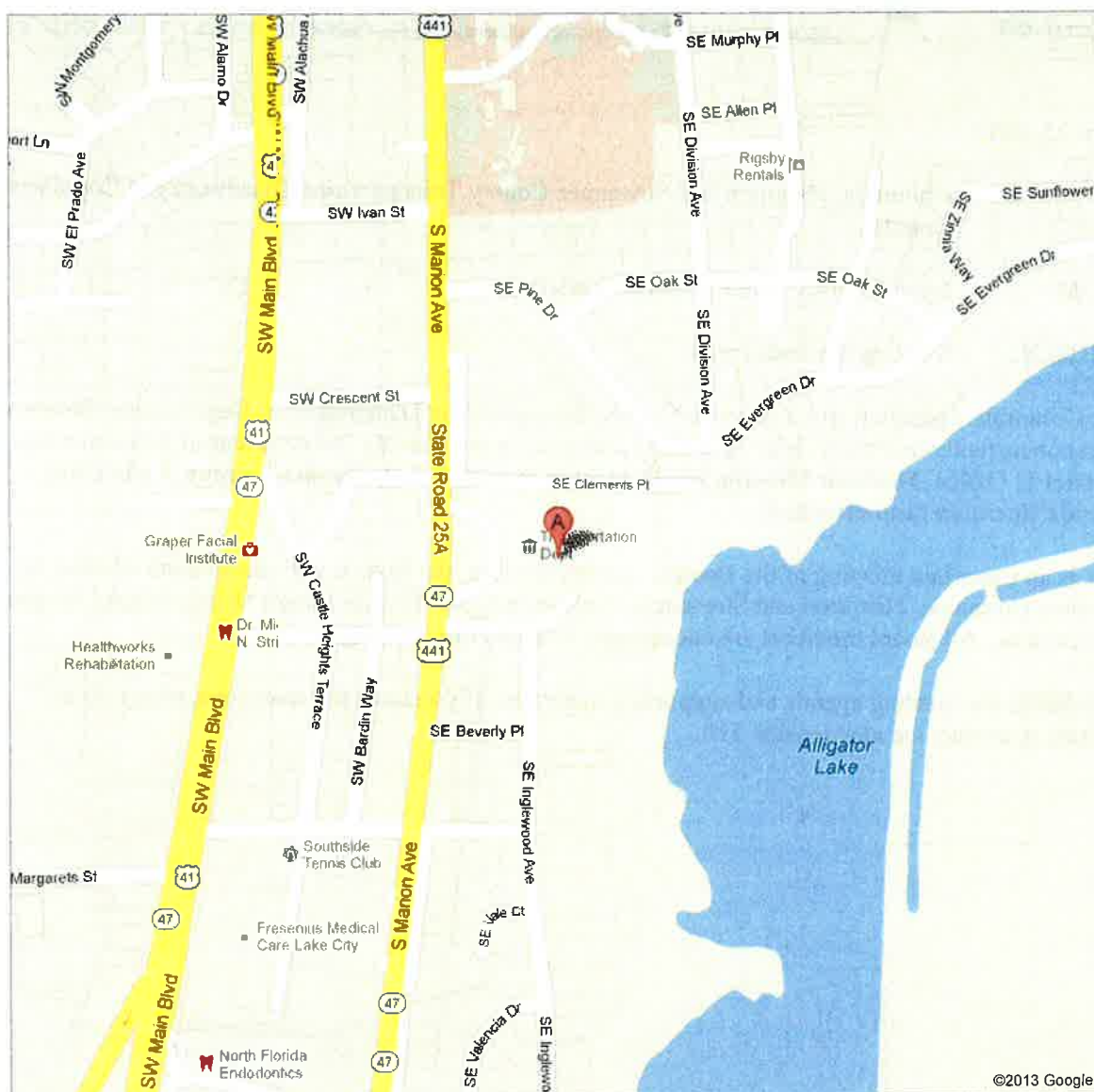
This is an important meeting of the Boards. At this meeting, the Boards will recommend whether to combine Columbia, Hamilton and Suwannee Counties into one Transportation Disadvantaged Program service area. All Board members are encouraged to attend this meeting.

Attached is the meeting agenda and supporting materials. If you have any questions, please do not hesitate to contact me at extension 110.

Attachments

t:\lynn\td13\columbia\memos\may3.docx

Dedicated to improving the quality of life of the Region's citizens,
by coordinating growth management, protecting regional resources,
promoting economic development and providing technical services to local governments.





Serving
Alachua • Bradford
Columbia • Dixie • Gilchrist
Hamilton • Lafayette • Madison
Suwannee • Taylor • Union Counties

2009 NW 67th Place, Gainesville, FL 32653-1603 • 352.955.2200

**CONCURRENT MEETINGS OF THE
COLUMBIA COUNTY, HAMILTON COUNTY AND SUWANNEE COUNTY
TRANSPORTATION DISADVANTAGED COORDINATING BOARDS**

MEETING ANNOUNCEMENT AND AGENDA

**Florida Department of Transportation
District II Office
Madison Meeting Room
1109 South Marion Avenue
Lake City, Florida**

**Friday
May 3, 2013
2:00 p.m.**

I. CALL TO ORDER

A. Introductions

B. Multi-County Transportation Disadvantaged Program Service Area NO ACTION REQUIRED

The Boards need to discuss combining Columbia, Hamilton and Suwannee Counties into a combined designated Transportation Disadvantaged Program service area

C. Adopt Resolutions ACTION REQUIRED

Each Board will consider adopting the respective attached draft resolutions

If you have any questions concerning the draft agenda, please do not hesitate to contact Lynn Godfrey, Senior Planner, at 1.800.226.0690, extension 110.

t:\lynn\td13\columbia\agendas\may3.docx



Serving
 Alachua • Bradford
 Columbia • Dixie • Gilchrist
 Hamilton • Lafayette • Madison
 Suwannee • Taylor • Union Counties

2009 NW 67th Place, Gainesville, FL 32653-1603 • 352.955.2200

April 25, 2013

TO: Columbia, Hamilton and Suwannee County Transportation Disadvantaged Coordinating Boards

FROM: Lynn Godfrey, AICP, Senior Planner

SUBJECT: Designation of a Combined Designated Service Area and Establishment of a Multi-County Transportation Disadvantaged Coordinating Board

STAFF RECOMMENDATION

Review the attached information concerning the designation of a combined designated service area under Florida's Transportation Disadvantaged Program and the establishment of a multi-county Transportation Disadvantaged Coordinating Board.

BACKGROUND

The Columbia, Hamilton and Suwannee County Transportation Disadvantaged Coordinating Boards have discussed combining Columbia, Hamilton and Suwannee Counties as a combined designated service area under Florida's Transportation Disadvantaged Program. The Boards have also discussed the establishment of a multi-county Transportation Disadvantaged Coordinating Board for Columbia, Hamilton and Suwannee Counties.

Attached is an organizational overview of the proposed combined service area and data package for the Board's information.

If you have any questions concerning this matter, please do not hesitate to contact me.

Attachment

t:\lynn\td13\columbia\memos\multidata.docx



**Transportation
Disadvantaged**

Rick Scott
Governor

David Darm
Chairman

Mike Willingham
Vice Chairman

Steve Holmes
Executive Director

MEMORANDUM

DATE: April 24, 2013

TO: North Florida Regional Planning Council
Suwannee Valley Transportation Authority

FROM: 
Steve Holmes, Executive Director

SUBJECT: Commission's Position on Combining Service Areas and
Creating a Multi-County Coordinating Board

The purpose of this memorandum is to state the Commission's position on combining service areas and creating a multi-county coordinating board. The Attorney General's Office has confirmed that the Commission's position is a correct interpretation of law.

Rule 41-2.012 F.A.C. states, "... when agreed upon in writing, by all Board of County Commissions in each county to be covered in the service area, multi-county Coordinating Boards may be appointed." The written recommendation from the Board of County Commission in each county is for combining each county's coordinating boards into a multi-county one. Rule 41-2.012 does not give Board of County Commissions the authority to combine service areas. That authority rests solely with the Commission after a recommendation from a Designated Official Planning Agency as stated in Rule 41-2.002.(4) F.A.C. It states the "Designated Service Area means a geographical area recommended by a designated official planning agency, subject to approval by the Commission, which defines the community where coordinated transportation services will be provided to the transportation disadvantaged."

Therefore, the Commission has the authority, provided under Chapter 41-2 Florida Administrative Code, to approve recommendations to create a multi-county Coordinating Board, as well the authority to designate a combined service area.

Also, by Rule 41-2.012 F.A.C., a coordinating board "is recognized as an advisory body to the Commission in its service area." The Commission

values advice provided by all entities on the coordinating boards, especially when making major decisions. Coordinating boards not only contain local transportation disadvantaged advocates, but also eight to ten state agencies and organizations. These agencies and organizations are the experts in their programs and funding mechanisms. Much of the funding provided to each county for transportation disadvantaged services comes from federal and state funding streams.

The Commission values its relationships with coordinating boards, local communities, designated official planning agencies, community transportation coordinators, plus many other groups to serve older adults, persons with disabilities, people with low incomes and at-risk children. Before making major decisions the Commission seeks input from all affected parties. Thus, to ensure the Commission receives appropriate information in making a decision to combine service areas and create a multi-county coordinating board for Columbia, Suwannee and Hamilton Counties the Commission needs three recommendations.

First, is a recommendation from each county coordinating board to consolidate service areas. Please send this recommendation through the North Central Regional Planning Council for inclusion in its recommendation.

Second, is a written recommendation from each Board of County Commission recommending a merger of the three Coordinating Boards into a multi-county one.

Third, is a recommendation from the North Central Florida Regional Planning Council to combine the service areas. Once the Commission receives these three recommendations, then we will be prepared to make a decision. To date, the Commission has approved all five areas in the state that have recommended a combination of service areas and creation of multi-county Coordinating Boards.



**Transportation
Disadvantaged**


Rick Scott
Governor

David Darm
Chairman

Mike Willingham
Vice Chairman

Steve Holmes
Executive Director

MEMORANDUM

DATE: April 25, 2013
TO: North Central Florida Regional Planning Council
FROM: 
Steve Holmes, Executive Director
SUBJECT: Organizational Overview of Proposed Regional Advisory Board to Combine Hamilton, Suwannee and Columbia Counties Service Areas and Local Coordinating Board

The Proposed Coordinated Transportation System in Hamilton, Suwannee and Columbia Counties

1. Transportation Disadvantaged Persons

- Are those persons in the Hamilton, Suwannee and Columbia Counties Service Area who because of physical or mental disability, income status, or age are unable to transport themselves or to purchase transportation and are, therefore, dependent upon others to obtain access to health care, employment, education, shopping, social activities, or other life-sustaining activities, or children who are handicapped or high-risk or at-risk as defined in s. 411.202. Chapter 427.011 (1) F.S.

2. Commission for the Transportation Disadvantaged

- Is an independent state agency that

-- Accomplishes the coordination of transportation services provided to the transportation disadvantaged in the Hamilton, Suwannee and Columbia Counties Service Area. Chapter 427.013 F.S.

-- Assures the cost-effective provision of transportation by Suwannee Valley Transit Authority for the transportation disadvantaged in the Hamilton, Suwannee and Columbia Counties Service Area. Chapter 427.013 F.S.

3. North Central Florida Regional Planning Council (Designated Official Planning Agency)

- Is the official agency designated by the Commission to fulfill the functions of transportation disadvantaged planning in the Hamilton, Suwannee and Columbia Counties Service Area. Rule 41-2.002(3) F.A.C.

- Is under contract with the Commission to provide staff support and resources to enable the multi-county Coordinating Board to fulfill its responsibilities. Rule 41-2.009(3) F.A.C.

4. Hamilton, Suwannee, Columbia Regional Advisory Board (Multi-County Coordinating Board)

- Is an advisory entity in the Hamilton, Suwannee and Columbia Counties Service Area composed of representatives appointed by the North Central Florida Regional Planning Council to provide assistance to Suwannee Valley Transit Authority relative to the coordination of transportation services in Hamilton, Suwannee and Columbia Counties Service Area. Chapter 427.011 (7) F.S.

- Is a board that develops local service needs and provides information, advice, and direction to Suwannee Valley Transit Authority on coordination of transportation disadvantaged services. Chapter 427.0157 F.S.

- Is an advisory body to the Commission in the Hamilton, Suwannee and Columbia Counties Service Area. Rule 41-2.012 F.A.C.

5. Suwannee Valley Transit Authority (Community Transportation Coordinator)

- Is the transportation entity recommended by the North Central Florida Regional Planning Council and approved by the Commission to ensure that coordinated transportation services are provided to the transportation disadvantaged population in the Hamilton, Suwannee and Columbia Counties Service Area. Chapter 427.011 (5) F.S., Chapter 427.015 (2) F.S. and Rule 41-2.010(1) F.A.C.

- Is under contract with the Commission for the Transportation Disadvantaged as the Community Transportation Coordinator responsible for the arrangement of the provision of transportation disadvantaged services for Hamilton, Suwannee and Columbia Counties Service Area. Rule 41-2.002(10)

- Is under contract with the Commission for the Transportation Disadvantaged to provide non-sponsored transportation disadvantaged services to the transportation disadvantaged in the Hamilton, Suwannee and Columbia Counties Service Area. Chapter Rule 427.011 (12) F.S.

6. Departments of Children and Families, Elderly Affairs, Education, Economic Opportunity (Workforce Board) and Veterans Affairs; Agencies for Health Care Administration and Persons with Disabilities; and Divisions of Vocational Rehabilitation or Blind Services. (Purchasing Agency)

- Are state health and human service agencies may purchase transportation services through Suwannee Valley Transit Authority for its clients, unless they meet the criteria outlined in rule or statute to use an alternative provider. Chapter 427.011 (8) F.S. and Chapter 427.0135 (1) F.S.

- Are members of the Hamilton, Suwannee and Columbia Counties Regional Advisory Board as appointed by North Central Florida Regional Planning Council. Rule 41-2.012(3)(a)-(p) F.A.C.

Forming a Multi-County Coordinating Board

1. Each county coordinating board recommends combining service areas.
2. Hamilton, Suwannee and Columbia Boards of County Commissions recommend the creation of a multi-county coordinating board in the combined Hamilton, Suwannee and Columbia Service Area. Rule 41-2.012 F.A.C.
3. North Central Florida Regional Planning Council recommends combining service areas.
4. Commission for the Transportation Disadvantaged
 - Approve the new combined Hamilton, Suwannee and Columbia Counties Service Area. Rule 41-2.002(4) F.A.C.
 - Approve the creation of a multi-county coordinating board for the Hamilton, Suwannee and Columbia Counties Service Area. Rule 41-2.012 F.A.C.
 - Enter into a contract with North Central Florida Regional Planning Council to provide staff support and resources to enable the Regional Advisory Board to fulfill its responsibilities. Rule 41-2.009(3) F.A.C.
- 5.. Upon approval of the combined service area and multi-county coordinating board, North Central Florida Regional Planning Council will
 - Appoint three elected officials, one from Columbia, Suwannee and Hamilton Counties to serve on the Regional Advisory Board. Rule 41-2.012(3) F.A.C.
 - Appoint an elected official from Columbia, Suwannee or Hamilton Counties to serve as Chairperson of the Regional Advisory Board. Rule 41-2.012(1) F.A.C.
 - Appoint an elected official from Columbia, Suwannee or Hamilton Counties to serve as Vice-Chairperson. Rule 41-2.012(3) F.A.C.
 - Appoint members to the coordinating board in accordance with Rule 41-2.012(3)(a) through (p) F.A.C.
 - Enter into a contract with the Commission to provide staff support and resources to enable the Regional Advisory Board to fulfill its responsibilities. Rule 41-2.009(3) F.A.C.
 - Provide sufficient staff support and resources to enable the Regional Advisory Board to fulfill its responsibilities. Rule 41-2.009(3) F.A.C.
 - In coordination with the Regional Advisory Board, draft by-laws for the new combined Hamilton, Suwannee and Columbia Counties Service Area.

6. Hamilton, Suwannee, Columbia Regional Advisory Board

- Approve the Regional Advisory Board's By-Laws for the new combined Hamilton, Suwannee and Columbia Counties Service Area.
- Appoint a Grievance Committee to process and investigate complaints from agencies, users, transportation operators, potential users of the system and Suwannee Valley Transit in the Hamilton, Suwannee and Columbia Counties Service Area. Rule 41-2.012(5)(c) F.A.C.

Transitioning Coordinated Transportation Services to the Combined Service Area

1. Commission for the Transportation Disadvantaged

- Enter into a new contract with Suwannee Valley Transit Authority for the arrangement of the provision of transportation disadvantaged services for Hamilton, Suwannee and Columbia Counties Service Area using a Memorandum of Agreement, effective July 1, 2013. Rule 41-2.008(1) F.A.C. and Rule 41-2.002(10) F.A.C.
- Enter into a contract with Suwannee Valley Transit Authority to provide non-sponsored transportation disadvantaged services to the transportation disadvantaged in the Hamilton, Suwannee and Columbia Counties Service Area. Chapter 427.011(12) F.S.
- Approve the Transportation Disadvantaged Service Plan, which includes service rates. Rule 41-2.011(3) F.A.C.

2. North Central Florida Regional Planning Council

- Complete any outstanding tasks from each county coordinating board.
- Develop a Transportation Disadvantaged Service Plan for the combined Hamilton, Suwannee and Columbia Counties Service Area in consultation with the Regional Advisory Board and Suwannee Valley Transit Authority. Rule 41-2.009(4) F.A.C.

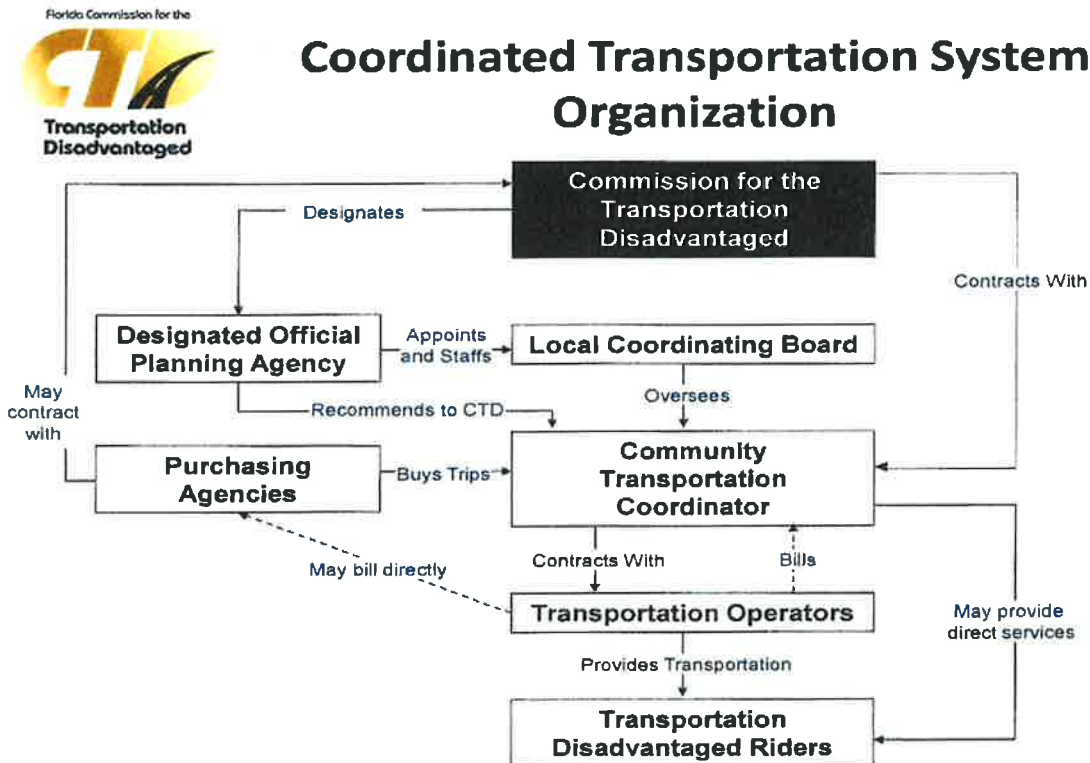
3. Suwannee Valley Transit Authority

- Complete any outstanding tasks from each county coordinating board.
- Develop a Transportation Disadvantaged Service Plan in consultation with the North Central Florida Regional Planning Council. Rule 41-2.009(4) F.A.C. and Rule 41-2.011(3) F.A.C.
- Develop service rates for the combined Hamilton, Suwannee and Columbia Counties Service Area.
- Continue to submit Annual Operations Report data by county, as currently practiced.
- Continue to submit Medicaid encounter data by county, as currently practiced.

- Enter into a new contract with the Commission for the arrangement of the provision of transportation disadvantaged services for Hamilton, Suwannee and Columbia Counties Service Area, effective July 1, 2013. Rule 41-2.008(1) F.A.C. and Rule 41-2.002(10) F.A.C.
- Enter into a contract with the Commission to provide non-sponsored transportation disadvantaged services to the transportation disadvantaged in the Hamilton, Suwannee and Columbia Counties Service Area, effective July 1, 2013. Chapter 427.011 (12) F.S.

4. Hamilton, Suwannee, Columbia Regional Advisory Board

- Provide guidance to the North Central Florida Regional Planning Council for developing the Transportation Disadvantaged Service Plan. Rule 41-2.012 F.A.C.
- Review the Transportation Disadvantaged Service Plan before submitting it to the Commission for approval. Rule 41-2.009(4) F.A.C. and Rule 41-2.011(3) F.A.C.
- Review the Memorandum of Agreement between the Commission and Suwannee Valley Transit Authority. Rule 41-2.008(1) F.A.C.
- Evaluate Suwannee Valley Transit Authority using Commission approved evaluation criteria at least annually. Rule 41-2.012(5)(b) F.A.C.



605 Suwannee Street, MS-49 ☎ Tallahassee, FL 32399-0450
 Phone: (850) 410-5700 ☎ Toll Free: (800) 983-2435 ☎ Fax: (850) 410-5752
www.dot.state.fl.us/ctd



Organizational Overview

Proposed Combined Transportation
Disadvantaged Program Service Area
of Columbia, Hamilton and Suwannee
Counties

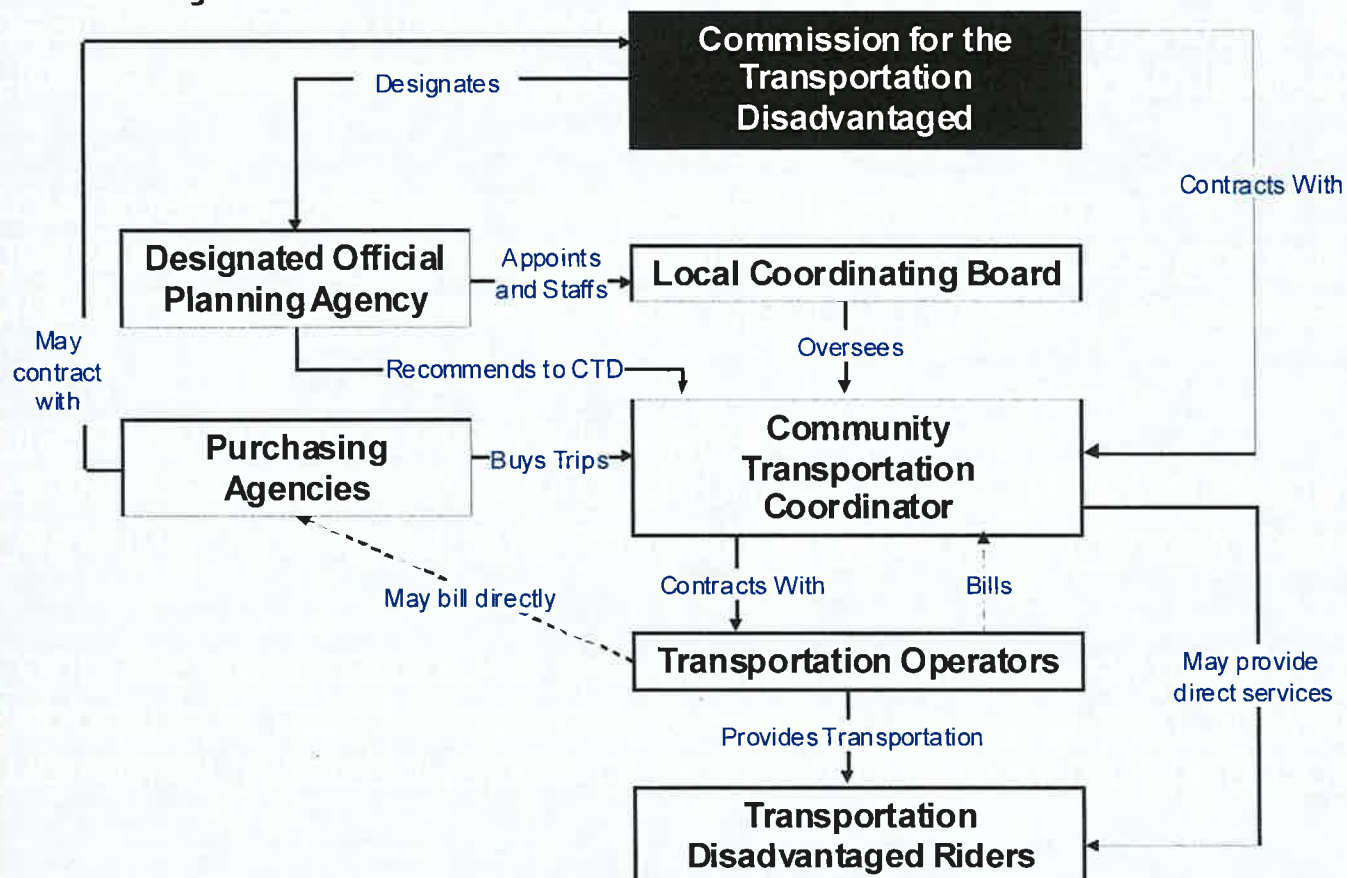
Proposed Coordinated Transportation System in Columbia, Hamilton and Suwannee Counties

- Florida Commission for the Transportation Disadvantaged
- North Central Florida Regional Planning Council (Designated Official Planning Agency)
- Columbia, Hamilton and Suwannee Multi-County Transportation Disadvantaged Coordinating Board
- Suwannee Valley Transit Authority (Community Transportation Coordinator)





Coordinated Transportation System Organization



2

Forming a Combined Designated Service Area

- Individual Transportation Disadvantaged Coordinating Boards support the designation of Columbia, Hamilton and Suwannee Counties as a combined designated service area (May 3, 2013).
- Columbia, Hamilton and Suwannee Boards of County Commissions recommend the creation of a multi-county Transportation Disadvantaged Coordinating Board.
- North Central Florida Regional Planning Council recommends the designation of Columbia, Hamilton and Suwannee Counties as a combined designated service area (May 23, 2013).
- Florida Commission for the Transportation Disadvantaged designates Columbia, Hamilton and Suwannee Counties as a combined designated service area (May 21, 2013).



Upon Approval of a Combined Designated Service Area

- Florida Commission for the Transportation Disadvantaged will enter into a new Memorandum of Agreement with Suwannee Valley Transit Authority effective July 1, 2013.
- Florida Commission for the Transportation Disadvantaged will approve the creation of a multi-county Transportation Disadvantaged Coordinating Board.

Upon Approval of a Combined Designated Service Area - Continued

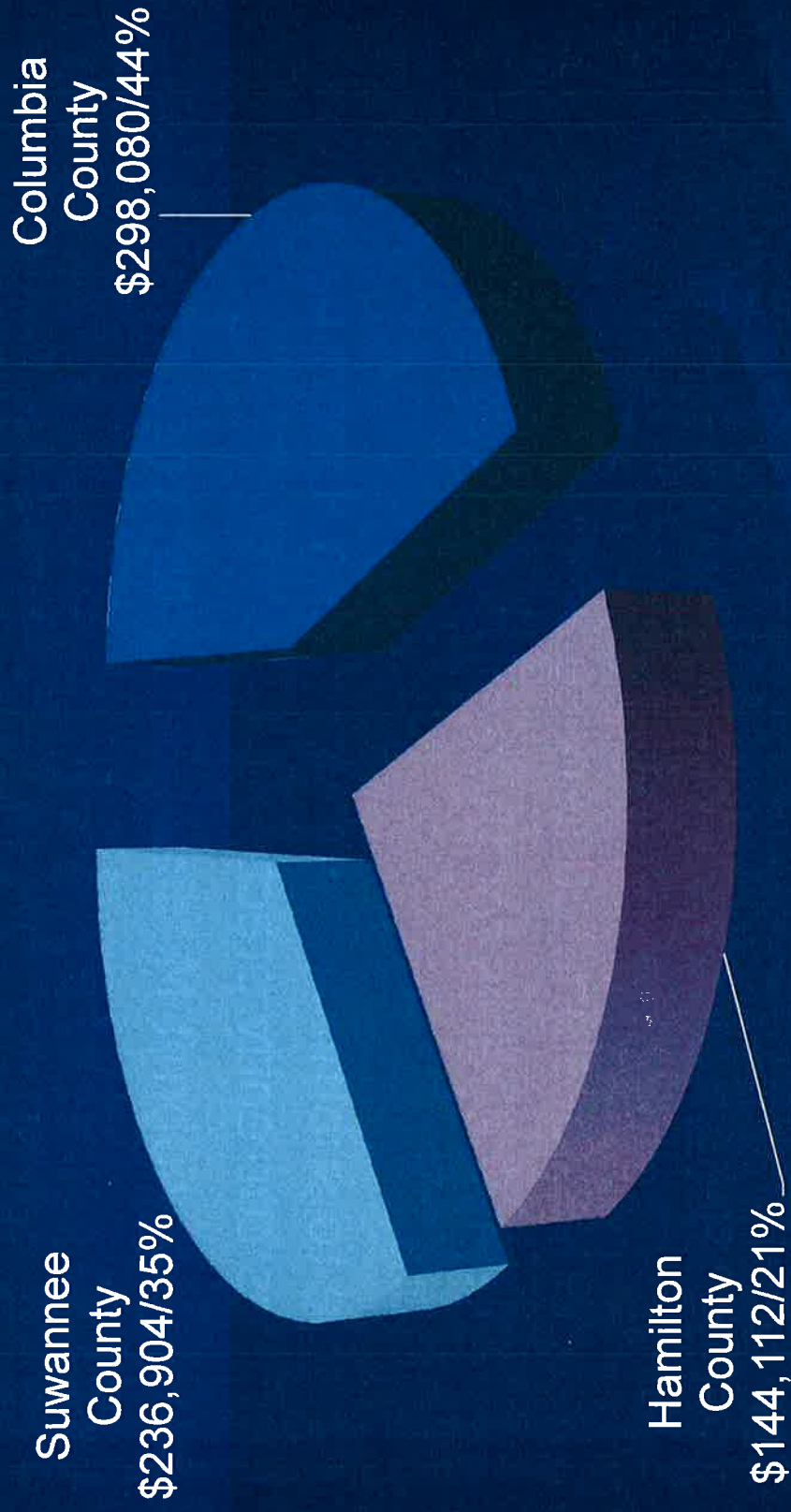
- Florida Commission for the Transportation Disadvantaged will enter into an agreement with the North Central Florida Regional Planning Council to provide staff support and resources to the multi-county Transportation Disadvantaged Coordinating Board.
- North Central Florida Regional Planning Council will appoint members to serve on the multi-county Transportation Disadvantaged Coordinating Board in accordance with Rule 41-2.012(3)(a) through (p), Florida Administrative Code.



Transitioning to a Combined Service Area

- Develop a Transportation Disadvantaged Service Plan for the combined designated service area.
- Develop service rates for the combined designated service area.
- Continue to submit Annual Operating Report data by county as currently practiced.
- Continue to submit Medicaid Program encounter data by county as currently practiced.
- Create Bylaws for the multi-county Transportation Disadvantaged Coordinating Board.

Fiscal Year 2012/13 Transportation Disadvantaged Trust Fund Allocations



Source: Florida Commission for the Transportation Disadvantaged



Individuals Served by the Transportation Disadvantaged Program July 2012 – March 2013



Source: Florida Commission for the Transportation Disadvantaged

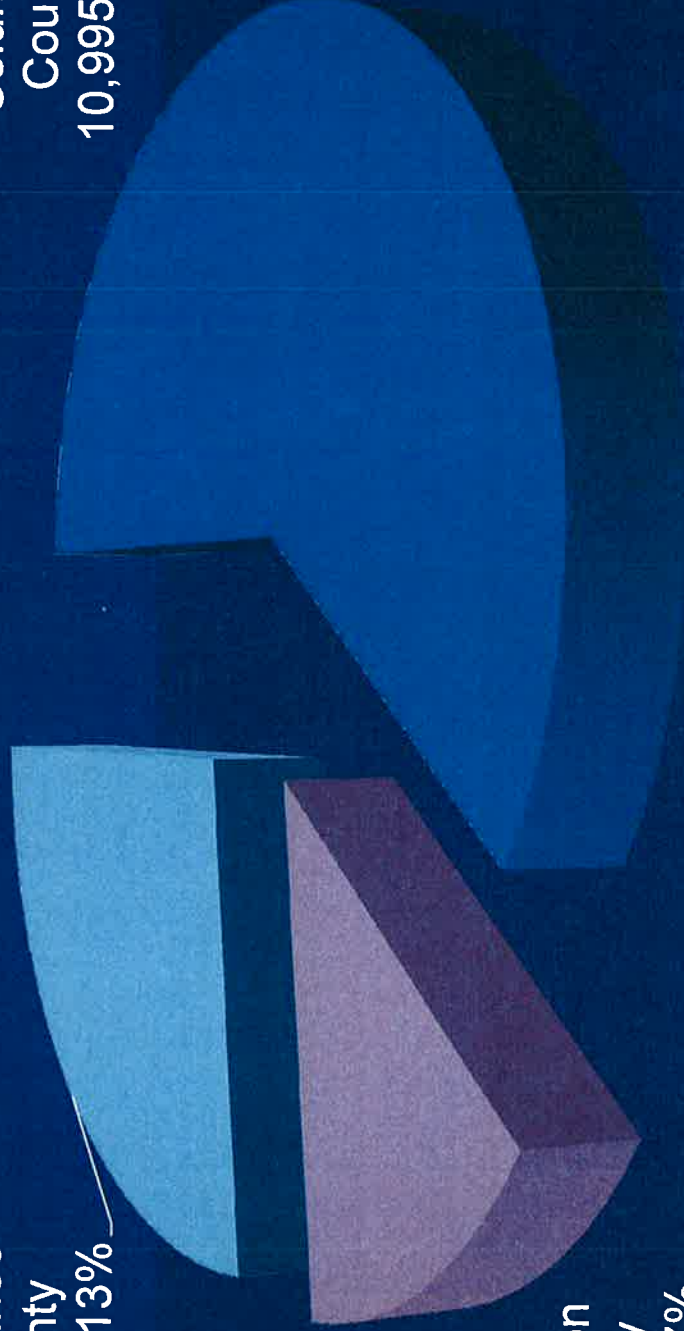


Transportation Disadvantaged Program Trips July 2012 – March 2013

Suwannee
County
4,926/13%

Columbia
County
10,995/60%

Hamilton
County
2,475/27%



Source: Florida Commission for the Transportation Disadvantaged



Average Cost Per Transportation Disadvantaged Program Trip July 2012 – March 2013



Source: Florida Commission for the Transportation Disadvantaged



Fiscal Year 2012/13 Medicaid Non-Emergency Transportation Program Allocations



Source: Florida Commission for the Transportation Disadvantaged

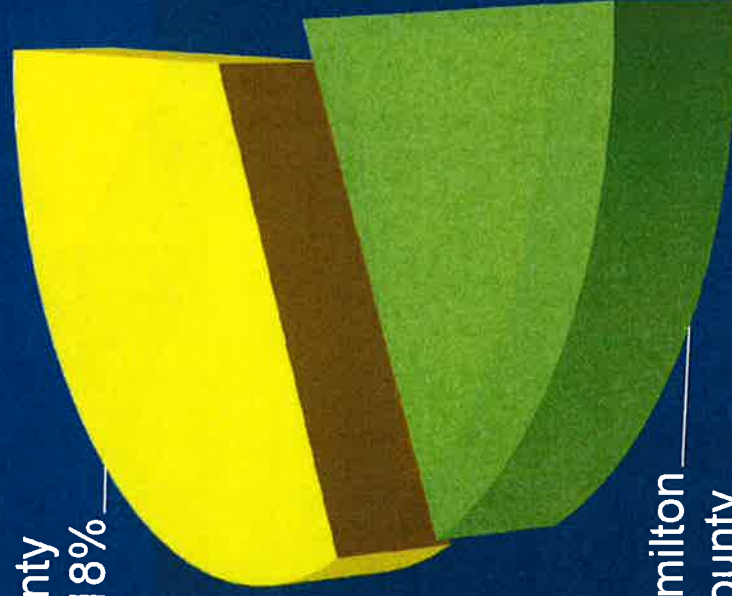


Individuals Served by the Medicaid Transportation Program July 2012- March 2013

Suwannee

County

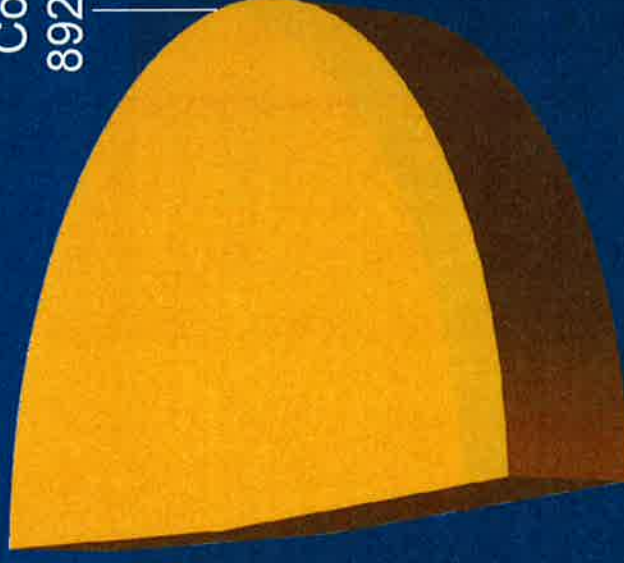
597/18%



Columbia

County

892/49%



North
Central
Florida
Regional
Planning
Council

Source: Florida Commission for the Transportation Disadvantaged



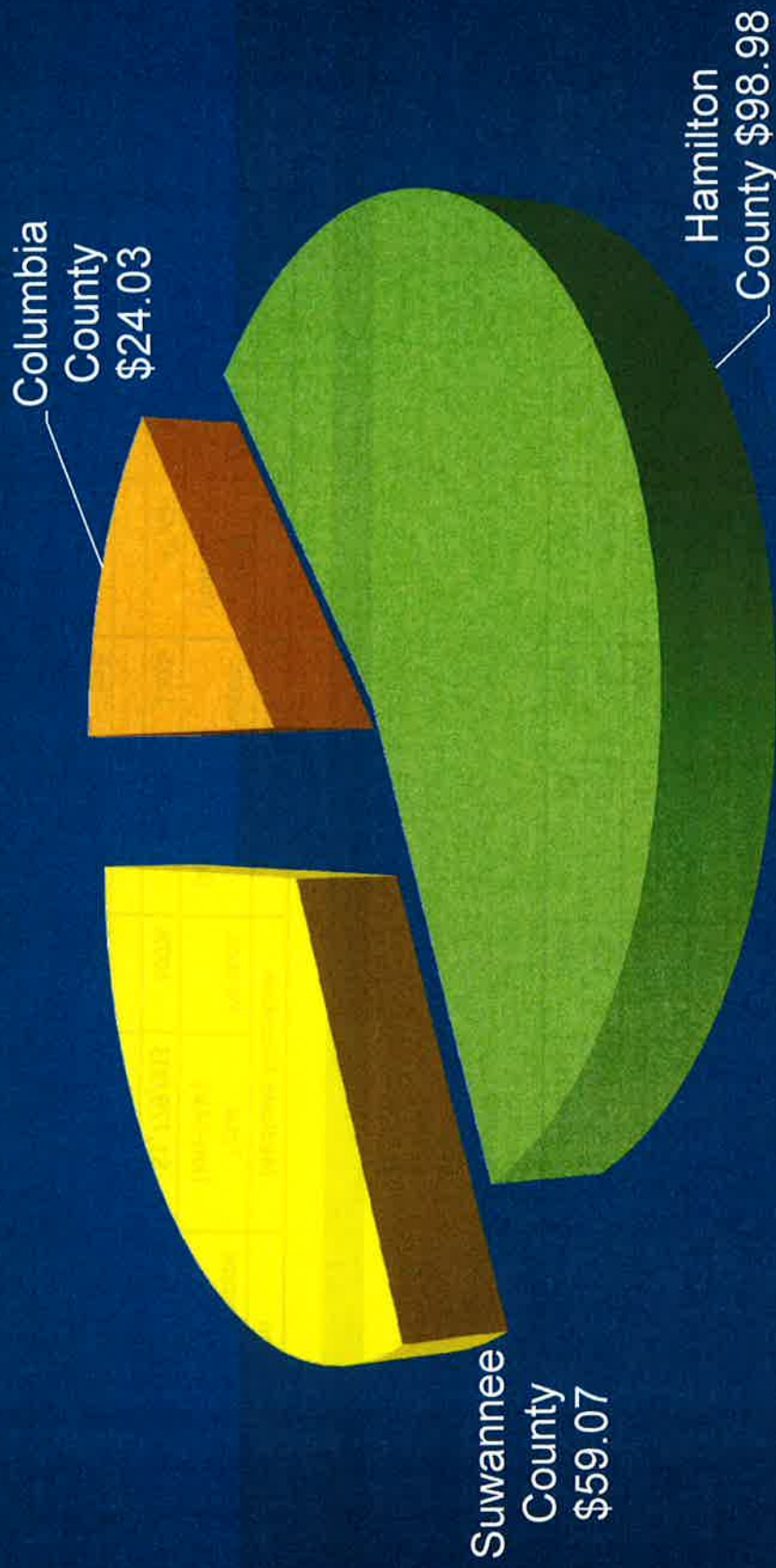
Medicaid Transportation Program Trips July 2012 – March 2013



Source: Florida Commission for the Transportation Disadvantaged



Average Cost Per Medicaid Transportation Program Trip July 2012 – March 2013



Source: Florida Commission for the Transportation Disadvantaged



Suwannee Valley Transit Authority: Comparison of Funding and Services Across Counties for Fiscal Year 2012-13*

Transportation Disadvantaged

	Population		TD Allocation		People Served		Trips		Miles		Cost
	2012 Estimate	Percent	Total (July-Mar)	Percent	Avg / Month (July-Mar)	Percent	Total (July-Mar)	Percent	Total (July-Mar)	Percent	Per Trip (July-Mar)
SVTA	126,330	100%	\$679,096	100%	287	100%	18,396	100%	323,631	100%	\$36.92
Columbia	67,966	54%	\$298,080	44%	167	58%	10,995	60%	144,294	45%	\$27.11
Suwannee	43,656	35%	\$236,904	35%	80	28%	4,926	27%	109,397	34%	\$48.09
Hamilton	14,708	12%	\$144,112	21%	39	14%	2,475	13%	69,940	22%	\$58.23

Columbia	Monthly \$24,825
Suwannee	\$19,742
Hamilton	\$12,009

Medicaid

	Population		Medicaid Allocation		People Served		Trips		Miles		Cost
	2012 Estimate	Percent	Total (July-Mar)	Percent	Total (July-Mar)	Percent	Total (July-Mar)	Percent	Total (July-Mar)	Percent	Per Trip (July-Mar)
SVTA	126,330	100%	\$1,779,003	100%	1,811	100%	47,407	100%	815,106	100%	\$43.94
Columbia	67,966	54%	\$565,776	32%	892	49%	29,572	62%	266,893	33%	\$24.03
Suwannee	43,656	35%	\$749,439	42%	597	33%	9,840	21%	225,953	28%	\$59.07
Hamilton	14,708	12%	\$463,788	26%	322	18%	7,995	17%	322,260	40%	\$98.98

Columbia	Monthly \$62,864
Suwannee	\$83,271
Hamilton	\$51,532

* Transportation Disadvantaged data from SVTA invoices to the Commission for the Transportation Disadvantaged. Medicaid information from AHCA's Encounter Data System.

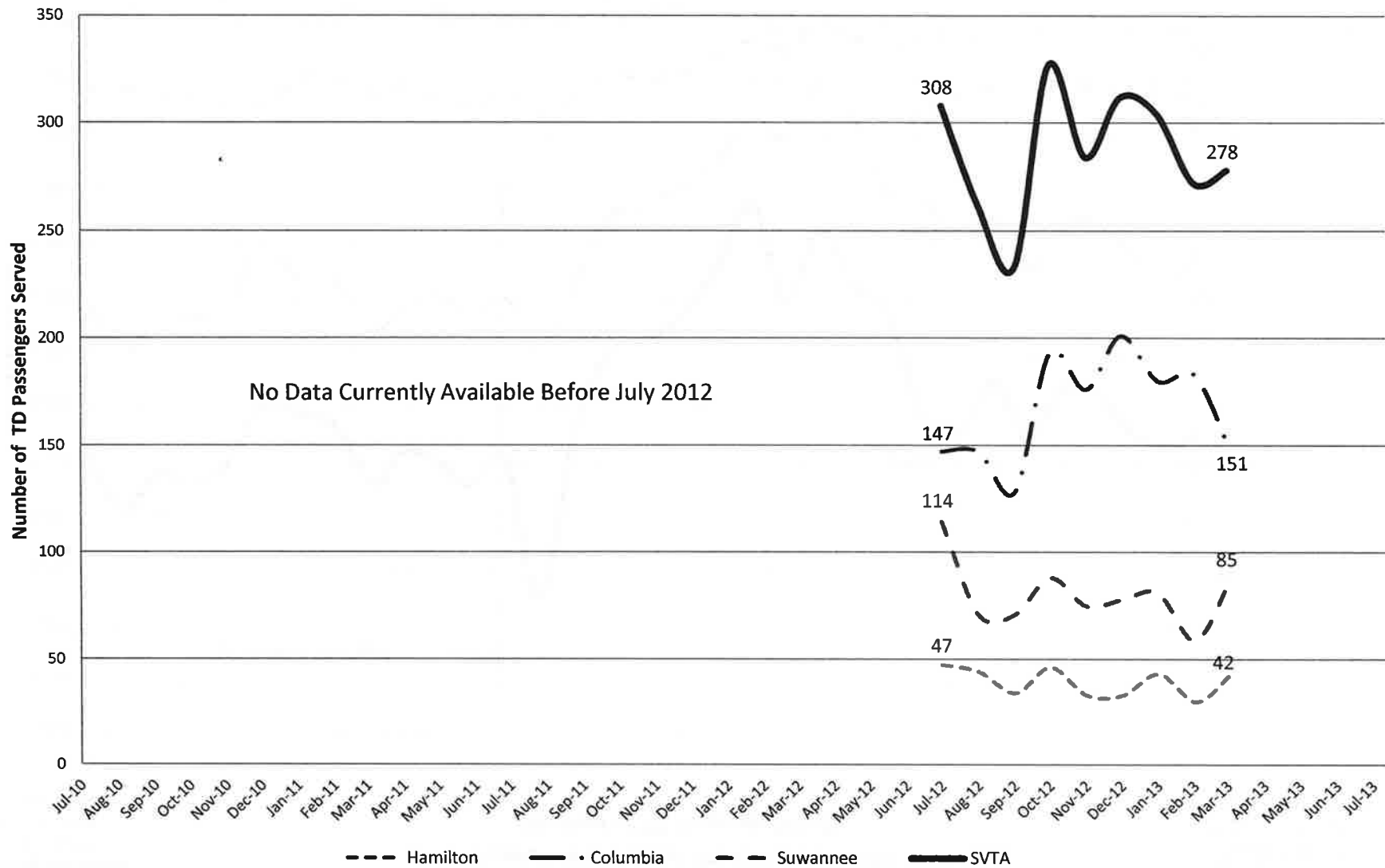
Suwannee Valley Transit Authority

Transportation Disadvantaged Data Package

July 2010 – March 2013

**Avg # Passengers Served
per Month**
FY12-13 = 287 YTD

Suwannee Valley Transit Authority Number of Unduplicated TD Passengers Served by Month

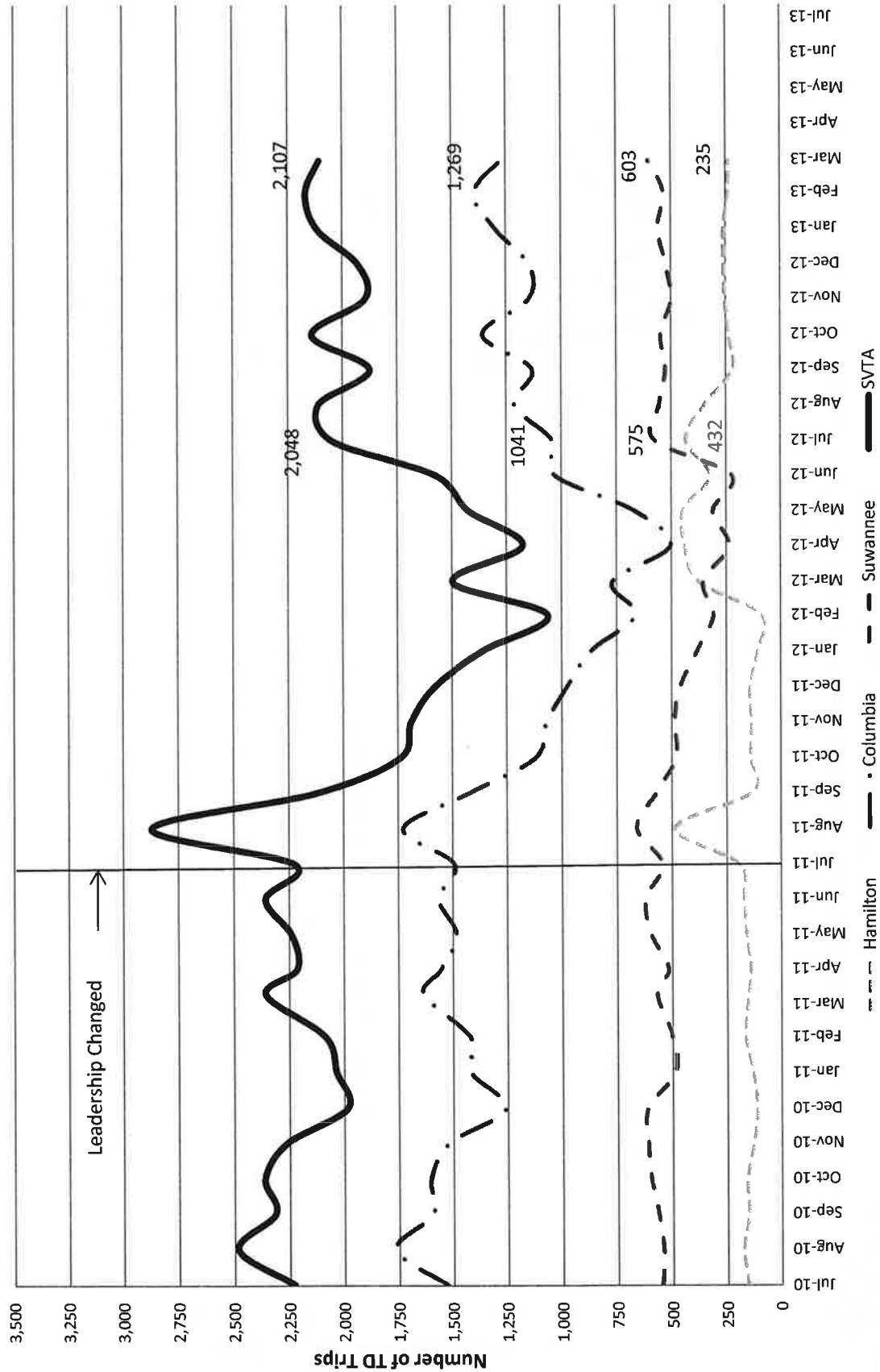


Data Source: SVTA TD invoices to Commission

Avg Trips per Month
 FY10-11 = 2,245
 FY11-12 = 1,693
 FY12-13 = 2,044 YTD

Suwannee Valley Transit Authority **Number of TD Trips per Month**

Trips per Year
 FY10-11 = 26,937
 FY11-12 = 20,317
 FY12-13 = 18,396 YTD



Data Source: SVTA TD invoices to Commission

Avg # of Miles per Month

FY10-11 = 32,635

FY11-12 = 20,155

FY12-13 = 35,959 YTD

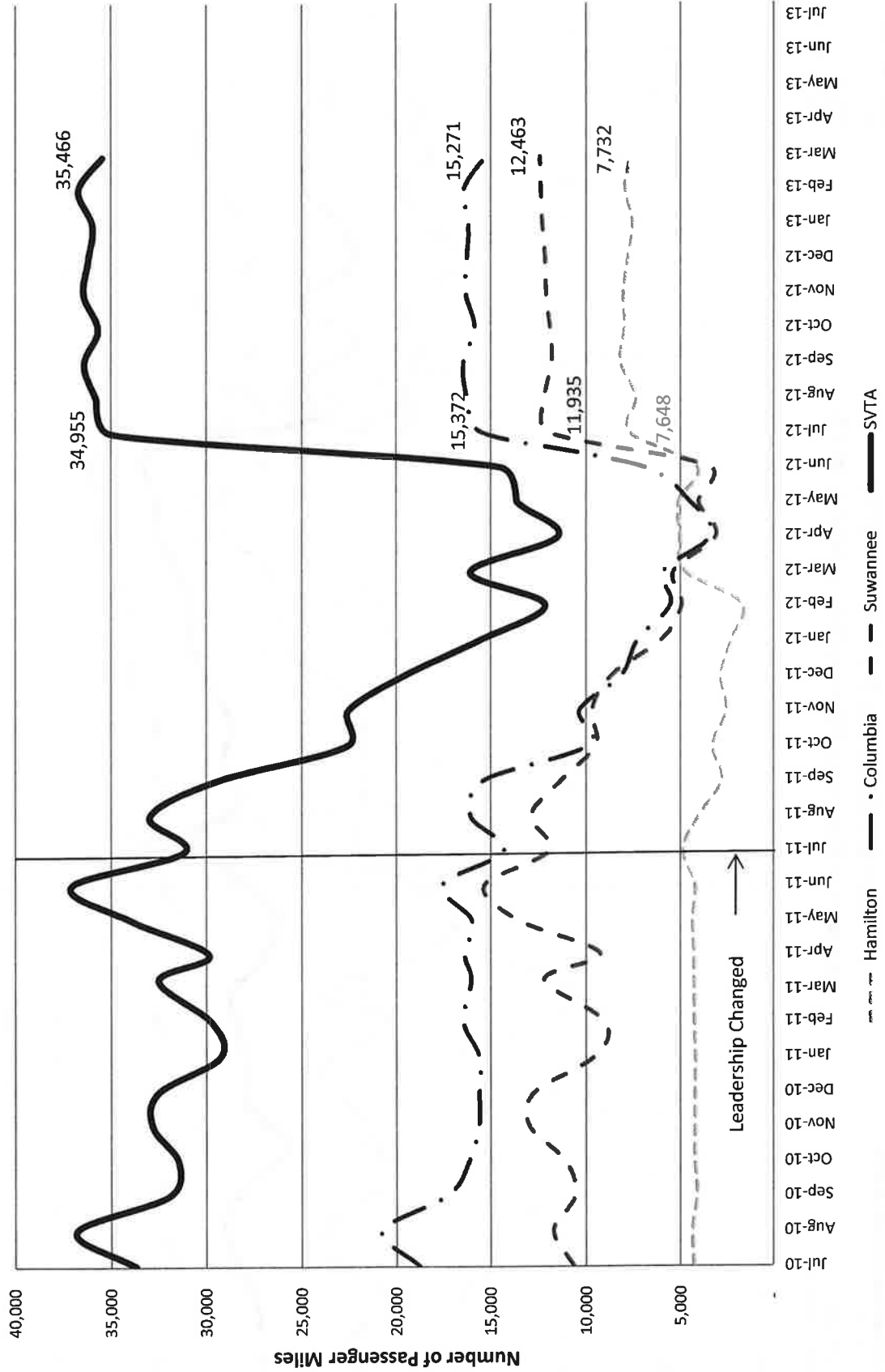
Miles per Year

FY10-11 = 391,614

FY11-12 = 241,858

FY12-13 = 323,631 YTD

**Suwannee Valley Transit Authority
Number of Passenger Miles per Month for TD Trips**



Data Source: SVTA TD invoices to Commission

Avg # of Trips per Mile per Month

FY10-11 = 14.5

FY11-12 = 11.9

FY12-13 = 17.6 YTD

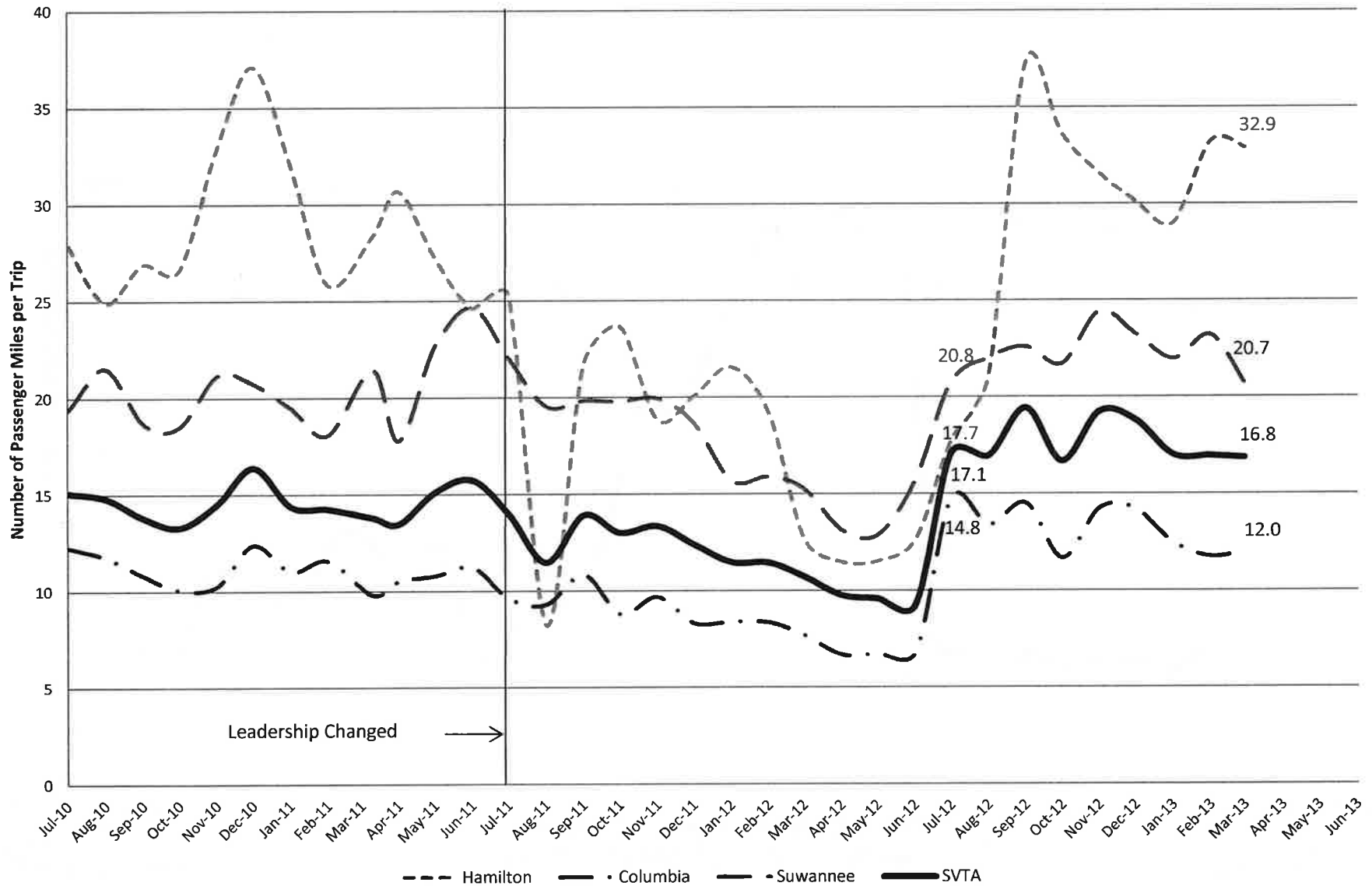
**Suwannee Valley Transit Authority
Number of Passenger Miles per Trip by Month for TD**

Trips per Year

FY10-11 = 14.5

FY11-12 = 11.9

FY12-13 = 17.6 YTD



Data Source: SVTA TD invoices to Commission

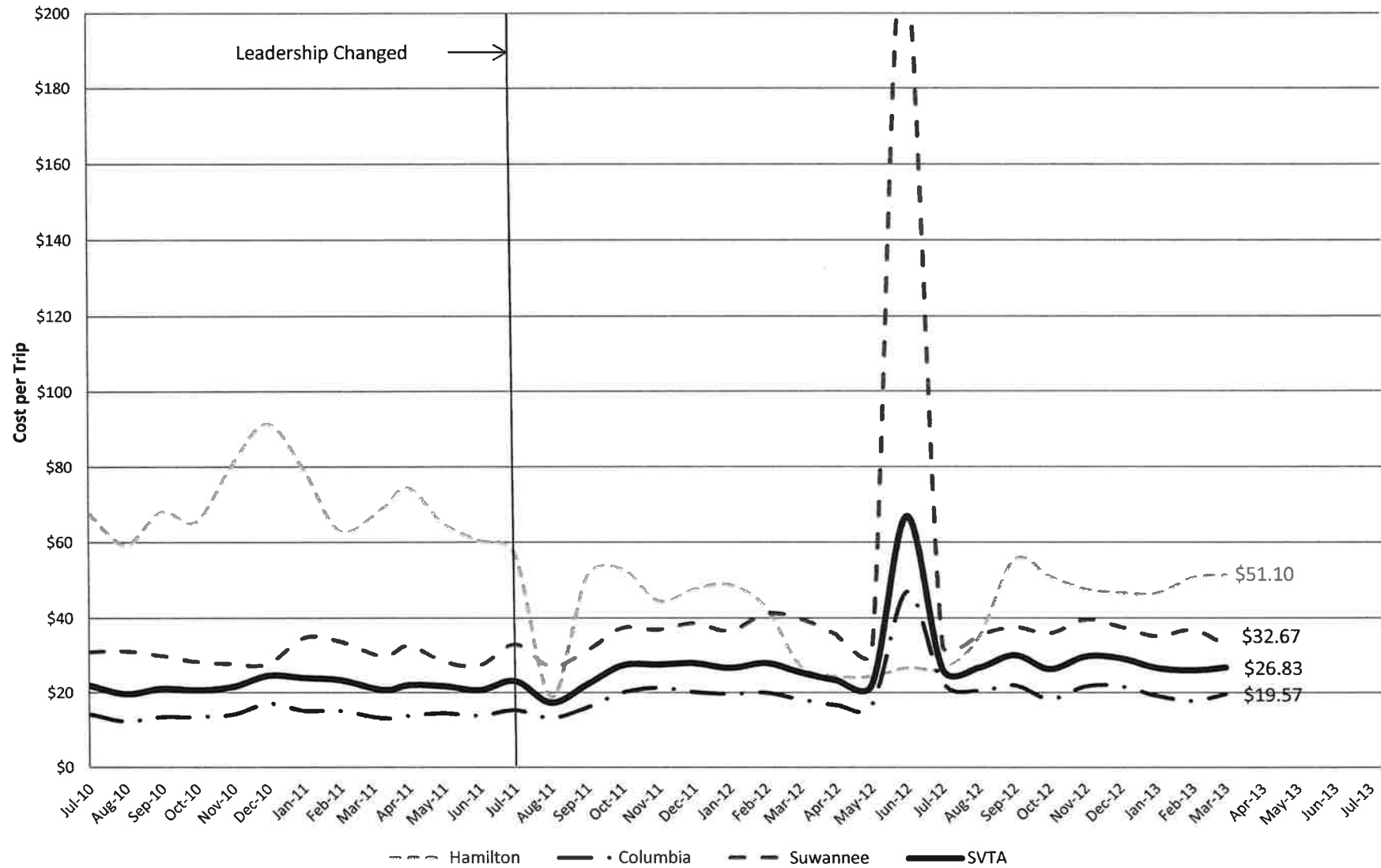
Cost per Trip per Month

FY10-11 = \$21.86
FY11-12 = \$28.19
FY12-13 = \$31.05 YTD

**Suwannee Valley Transit Authority
Cost per TD Trip by Month**

Cost per Trip

FY10-11 = \$21.77
FY11-12 = \$30.46
FY12-13 = \$27.69 YTD



Data Source: SVTA TD invoices to Commission

Suwannee Valley Transit Authority

Non-Emergency Medicaid Transportation Data Package

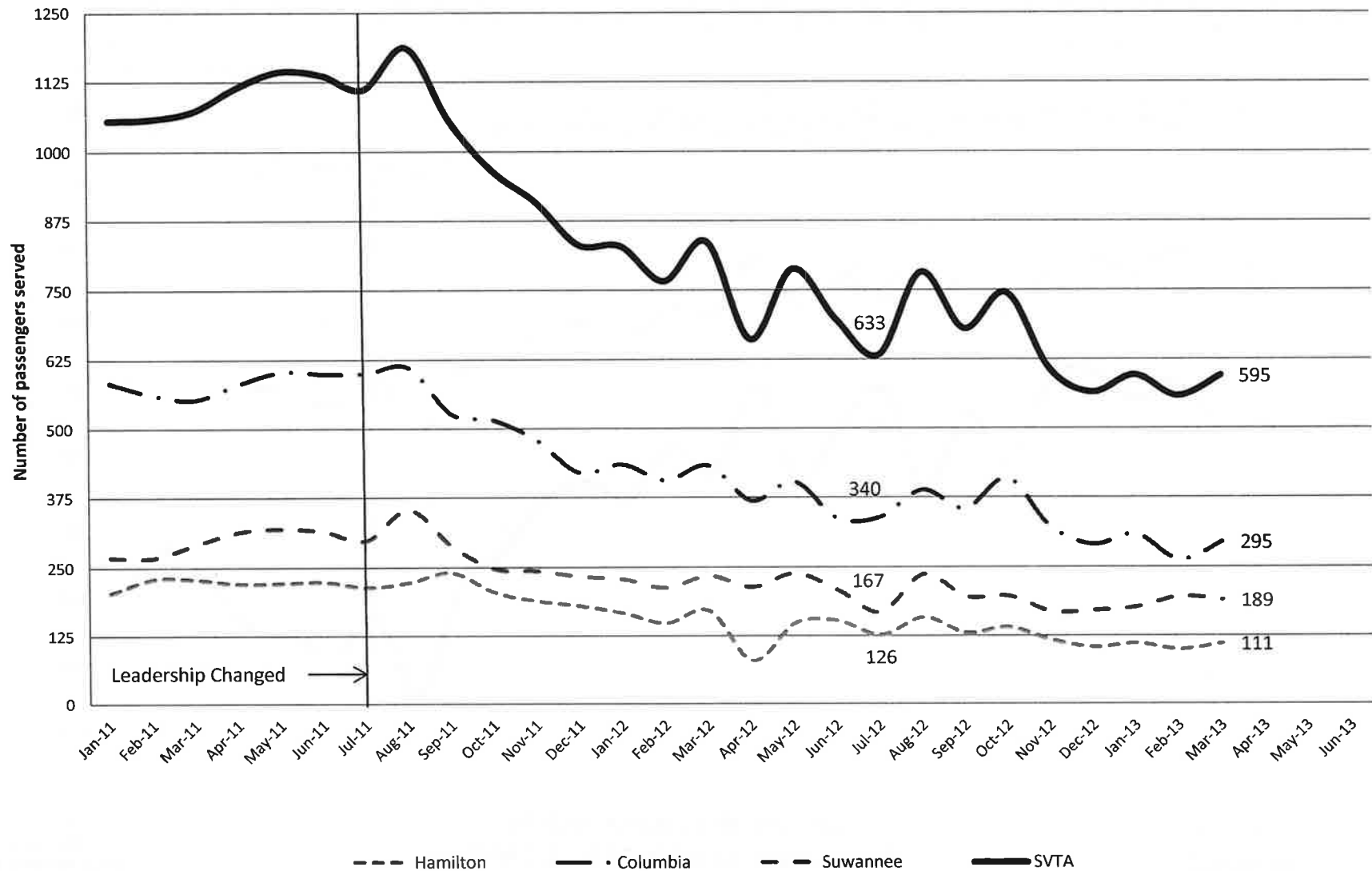
January 2011 – March 2013

Avg # of Passengers
Served per Month
FY11-12 = 887
FY12-13 = 640 YTD

Suwannee Valley Transit Authority

Number of unduplicated Medicaid recipients served per month

Passengers Served
per Year
FY11-12 = 2,894
FY12-13 = 1,811 YTD

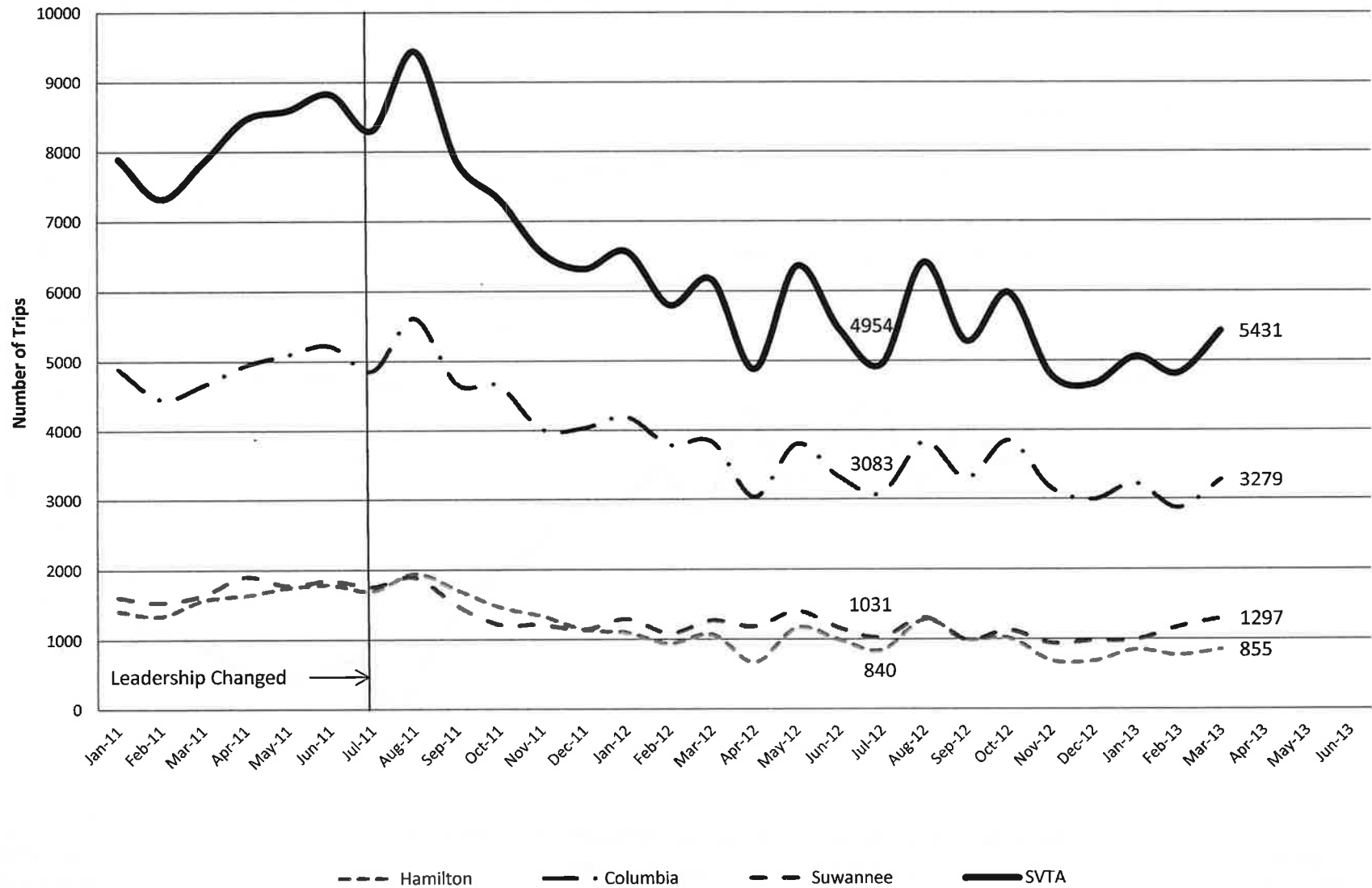


Data Source: Medicaid Encounter Data

Avg # Trips per Month
 FY11-12 = 6,752
 FY12-13 = 5,267 YTD

Suwannee Valley Transit Authority Number of NEMT trips per month

Trips per Year
 FY11-12 = 81,025
 FY12-13 = 47,407 YTD

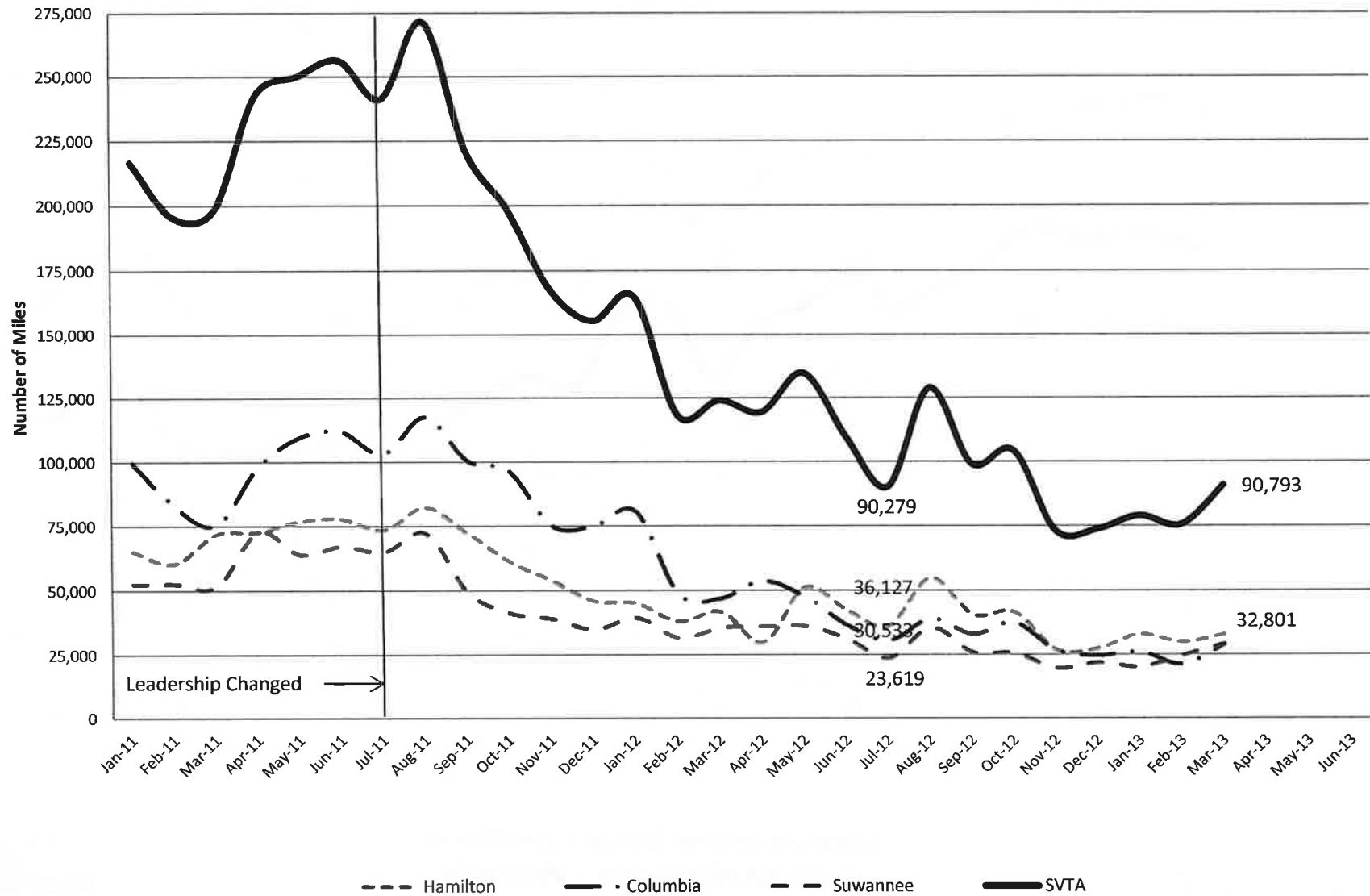


Data Source: Medicaid Encounter Data

Avg Miles per Month
 FY11-12 = 168,956
 FY12-13 = 90,567 YTD

Suwannee Valley Transit Authority Number of NEMT trip miles per month

Miles per Year
 FY11-12 = 2,027,476
 FY12-13 = 2,083,109 YTD

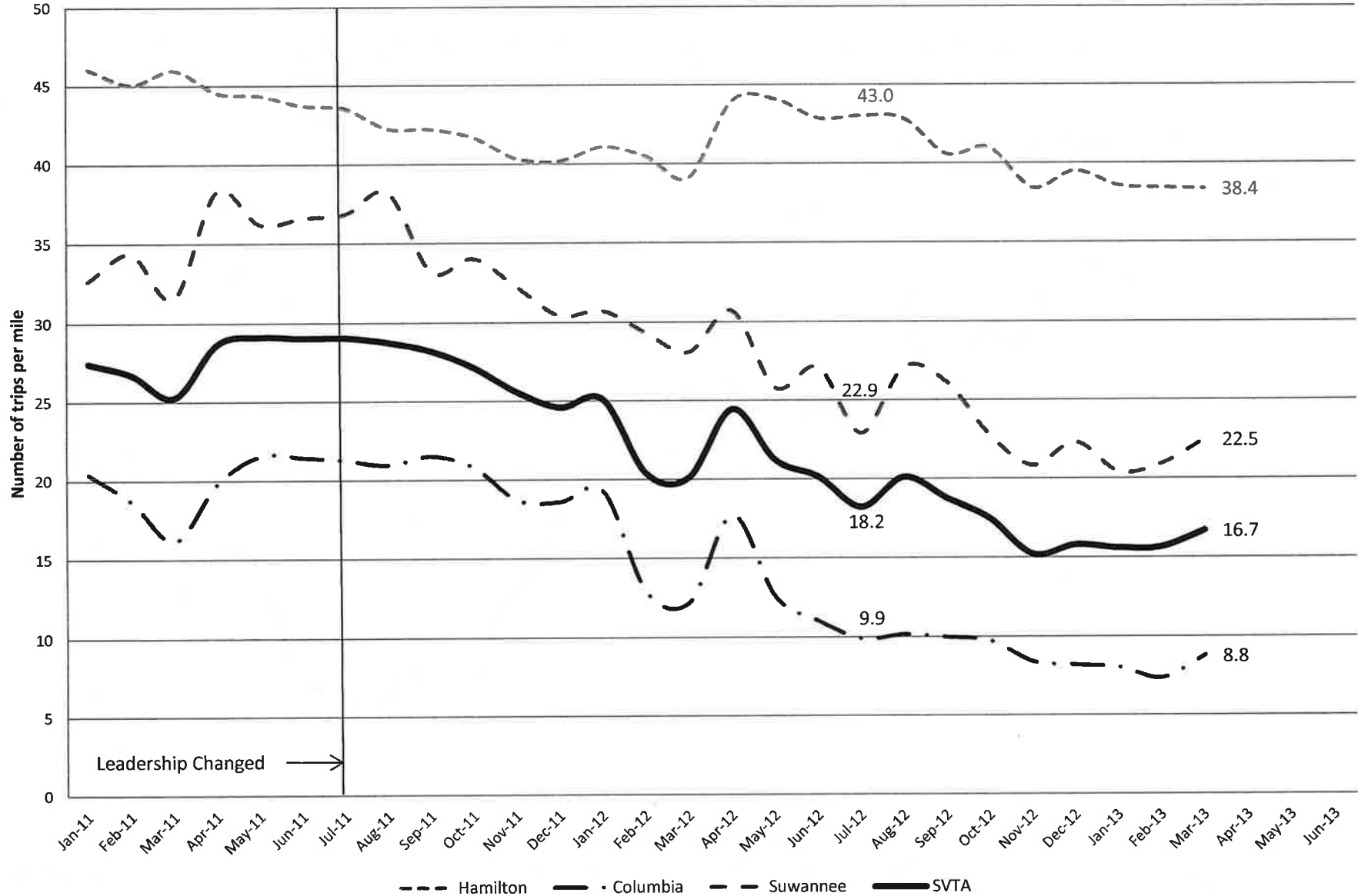


Data Source: Medicaid Encounter Data

Avg # Miles per Trip
per Month
FY11-12 = 24.6
FY12-13 = 17.1 YTD

Suwannee Valley Transit Authority Number of NEMT trips per mile per month

Miles per Trip per Year
FY11-12 = 25.0
FY12-13 = 17.2 YTD



Data Source: Medicaid Encounter Data

Cost per Trip per Month

FY11-12 = \$36.57

FY12-13 = \$43.60 YTD

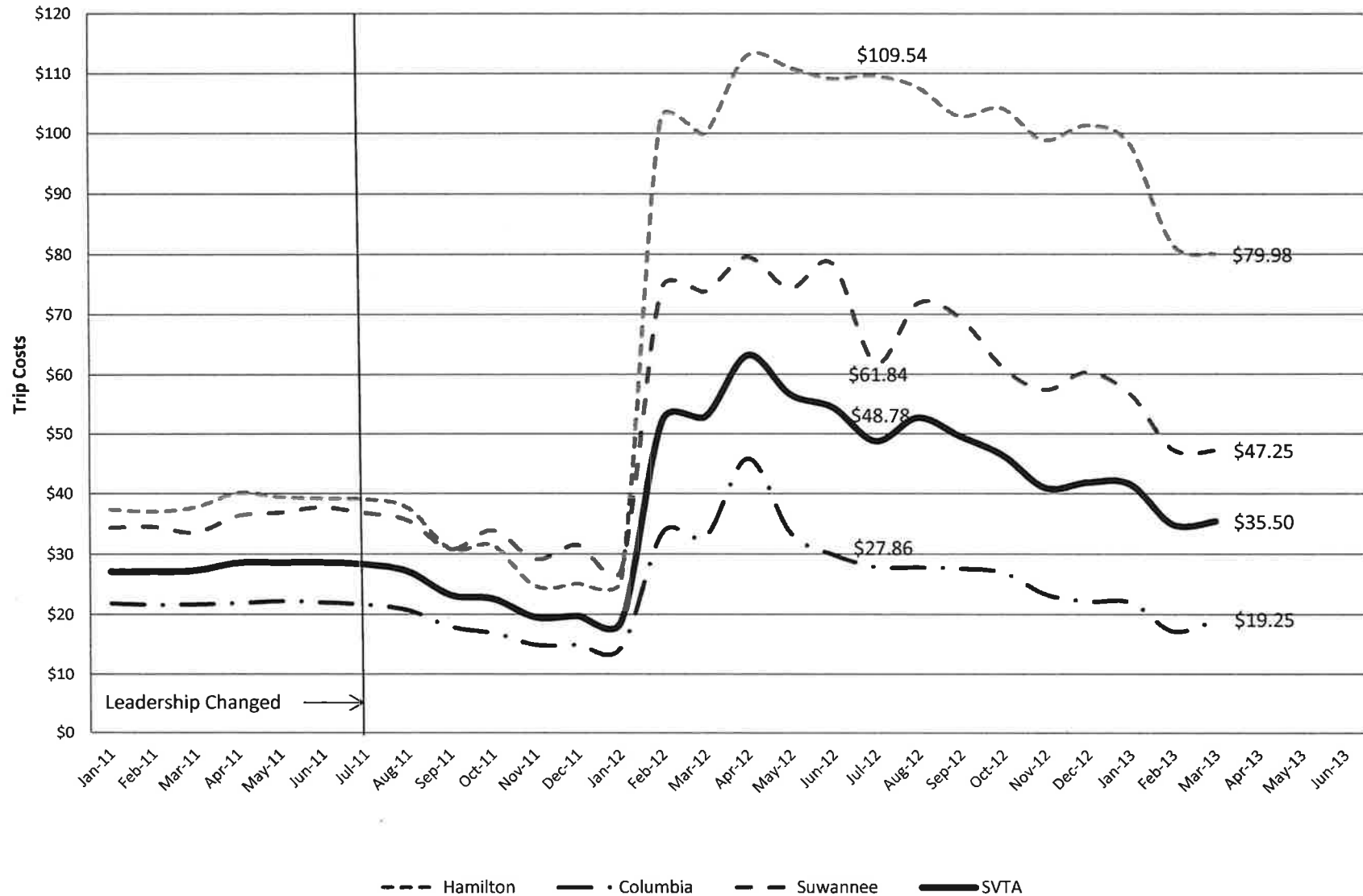
Suwannee Valley Transit Authority

Cost per NEMT trip by month

Cost per Trip

FY11-12 = \$34.69

FY12-13 = \$43.94 YTD



Data Source: Medicaid Encounter Data

TRANSPORTATION DISADVANTAGED COORDINATING BOARD VOTING MEMBERS	COLUMBIA COUNTY	HAMILTON COUNTY	SUWANNEE COUNTY
Chair - Local Elected Official	Commissioner Bucky Nash	Commissioner Beth Burnam	Commissioner Jason Bashaw
Florida Department of Transportation	Sandra Collins	Sandra Collins	Sandra Collins
Florida Department of Children and Families	Jaime Sanchez-Bianchi	Kay Tice	Kay Tice
Florida Department of Education	Rayford Riels	Vacant	Vacant
Florida Department of Elder Affairs	Deborah Freeman	Vacant	Bruce Evans
Florida Agency for Health Care Administration - Medicaid	Alana McKay	Alana McKay	Alana McKay
Regional Workforce Board	Michelle Gianossa	Sheryl Rehberg	Sheryl Rehberg
Community Action Agency	Matthew Pearson	Matthew Pearson	Matthew Pearson
Public Education	Keith Couey	Ward Daniels	Vacant
Veterans Representative	James Thrasher	Clay Lambert	Ellis A. Gray, III
Citizen Advocate	Jeannie Carr	Danny Johnson	Vacant
Citizen Advocate - User	LJ Johnson	Vacant	Vacant
Elderly Representative	Sandra Buck-Camp	Isaac Chandler	Charles Burke
Medical Community Representative	Kathy Barrs	Vacant	Vacant
Children at Risk	Vacant	Vacant	Colleen Cody
Private Transit Representative	Chris Samson	Vacant	Robin Lumpkins



Serving
 Alachua • Bradford
 Columbia • Dixie • Gilchrist
 Hamilton • Lafayette • Madison
 Suwannee • Taylor • Union Counties

2009 NW 67th Place, Gainesville, FL 32653-1603 • 352.955.2200

April 25, 2013

TO: Columbia, Hamilton and Suwannee County Transportation Disadvantaged Coordinating Boards

FROM: Lynn Godfrey, AICP, Senior Planner

SUBJECT: Designation of a Combined Designated Service Area and Establishment of a Multi-County Transportation Disadvantaged Coordinating Board

STAFF RECOMMENDATION

Consider adopting the attached resolutions supporting the designation of Columbia, Hamilton and Suwannee Counties by the Florida Commission for the Transportation Disadvantaged as a combined designated service area under Florida's Transportation Disadvantaged Program and the establishment of a multi-county Transportation Disadvantaged Coordinating Board for Columbia, Hamilton and Suwannee Counties.

BACKGROUND

The Columbia, Hamilton and Suwannee County Transportation Disadvantaged Coordinating Boards have discussed the designation of Columbia, Hamilton and Suwannee Counties as a combined designated service area under Florida's Transportation Disadvantaged Program. The Boards have also discussed the establishment of a multi-county Transportation Disadvantaged Coordinating Board for Columbia, Hamilton and Suwannee Counties.

Attached are draft resolutions supporting the designation of Columbia, Hamilton and Suwannee Counties as a combined designated service area under Florida's Transportation Disadvantaged Program and the establishment of a multi-county Transportation Disadvantaged Coordinating Board for Columbia, Hamilton and Suwannee Counties. The Boards need to consider adopting the attached resolutions.

If you have any questions concerning this matter, please do not hesitate to contact me.

Attachment

t:\lynn\td13\columbia\memos\multires.docx

RESOLUTION NO. 2013-01

A RESOLUTION OF THE COLUMBIA COUNTY TRANSPORTATION DISADVANTAGED COORDINATING BOARD SUPPORTING THE DESIGNATION OF COLUMBIA, HAMILTON AND SUWANNEE COUNTIES BY THE FLORIDA COMMISSION FOR THE TRANSPORTATION DISADVANTAGED AS A COMBINED DESIGNATED SERVICE AREA UNDER FLORIDA'S TRANSPORTATION DISADVANTAGED PROGRAM AND SUPPORTING THE ESTABLISHMENT OF A MULTI-COUNTY TRANSPORTATION DISADVANTAGED COORDINATING BOARD FOR COLUMBIA, HAMILTON AND SUWANNEE COUNTIES

WHEREAS, Rule 41-2.002(4) of the Florida Administrative Code defines a designated service area as a geographical area recommended by a designated official planning agency, subject to approval by the Florida Commission for the Transportation Disadvantaged;

WHEREAS, the designated service area defines the community where coordinated transportation services will be provided to the transportation disadvantaged;

WHEREAS, the Columbia County Transportation Disadvantaged Coordinating Board is the Coordinating Board for Florida's Transportation Disadvantaged Program for Columbia County;

WHEREAS, the purpose of the Columbia County Transportation Disadvantaged Coordinating Board is to identify local service needs and to provide information, advice and direction to the Community Transportation Coordinator on the coordination of services to be provided to the transportation disadvantaged through the Florida Coordinated Transportation System;

WHEREAS, the Columbia County Transportation Disadvantaged Coordinating Board supports the designation of Columbia, Hamilton and Suwannee Counties by the Florida Commission for the Transportation Disadvantaged as a combined designated service area under Florida's Transportation Disadvantaged Program; and

WHEREAS, the Columbia County Transportation Disadvantaged Coordinating Board supports the establishment of a multi-county Transportation Disadvantaged Coordinating Board for Columbia, Hamilton and Suwannee Counties and supports the appointment of members to a multi-county Transportation Disadvantaged Coordinating Board for Columbia, Hamilton and Suwannee Counties by the North Central Florida Regional Planning Council, serving as the Designated Official Planning Agency as designated by the Florida Commission for the Transportation Disadvantaged in accordance with Rule 41-2.012 of the Florida Administrative Code.

NOW, THEREFORE, BE IT RESOLVED BY THE COLUMBIA COUNTY TRANSPORTATION DISADVANTAGED COORDINATING BOARD THAT:

1. In accordance with Chapter 427, Florida Statutes and Rule 41-2 of the Florida Administrative Code, the Columbia County Transportation Disadvantaged Coordinating Board supports the designation of a combined designated service area by the Florida Commission for the Transportation Disadvantaged under Florida's Transportation Disadvantaged Program; and

2. In accordance with Chapter 427, Florida Statutes and Rule 41-2 of the Florida Administrative Code, the Columbia County Transportation Disadvantaged Coordinating Board supports the establishment of a multi-county Transportation Disadvantaged Coordinating Board for Columbia, Hamilton and Suwannee Counties and supports the appointment of members to a multi-county Transportation Disadvantaged Coordinating Board for Columbia, Hamilton and Suwannee Counties by the North Central Florida Regional Planning Council, serving as the Designated Official Planning Agency as designated by the Florida Commission for the Transportation Disadvantaged.

APPROVED AND DULY ADOPTED by the Columbia County Transportation Disadvantaged Coordinating Board, this 3rd day of May 2013.

Bucky Nash, Chair

Date

RESOLUTION NO. 2013-01

A RESOLUTION OF THE HAMILTON COUNTY TRANSPORTATION DISADVANTAGED COORDINATING BOARD SUPPORTING THE DESIGNATION OF COLUMBIA, HAMILTON AND SUWANNEE COUNTIES BY THE FLORIDA COMMISSION FOR THE TRANSPORTATION DISADVANTAGED AS A COMBINED DESIGNATED SERVICE AREA UNDER FLORIDA'S TRANSPORTATION DISADVANTAGED PROGRAM AND SUPPORTING THE ESTABLISHMENT OF A MULTI-COUNTY TRANSPORTATION DISADVANTAGED COORDINATING BOARD FOR COLUMBIA, HAMILTON AND SUWANNEE COUNTIES

WHEREAS, Rule 41-2.002(4) of the Florida Administrative Code defines a designated service area as a geographical area recommended by a designated official planning agency, subject to approval by the Florida Commission for the Transportation Disadvantaged;

WHEREAS, the designated service area defines the community where coordinated transportation services will be provided to the transportation disadvantaged;

WHEREAS, the Hamilton County Transportation Disadvantaged Coordinating Board is the Coordinating Board for Florida's Transportation Disadvantaged Program for Hamilton County;

WHEREAS, the purpose of the Hamilton County Transportation Disadvantaged Coordinating Board is to identify local service needs and to provide information, advice and direction to the Community Transportation Coordinator on the coordination of services to be provided to the transportation disadvantaged through the Florida Coordinated Transportation System;

WHEREAS, the Hamilton County Transportation Disadvantaged Coordinating Board supports the designation of Columbia, Hamilton and Suwannee Counties by the Florida Commission for the Transportation Disadvantaged as a combined designated service area under Florida's Transportation Disadvantaged Program; and

WHEREAS, the Hamilton County Transportation Disadvantaged Coordinating Board supports the establishment of a multi-county Transportation Disadvantaged Coordinating Board for Columbia, Hamilton and Suwannee Counties and supports the appointment of members to a multi-county Transportation Disadvantaged Coordinating Board for Columbia, Hamilton and Suwannee Counties by the North Central Florida Regional Planning Council, serving as the Designated Official Planning Agency as designated by the Florida Commission for the Transportation Disadvantaged in accordance with Rule 41-2.012 of the Florida Administrative Code.

NOW, THEREFORE, BE IT RESOLVED BY THE HAMILTON COUNTY TRANSPORTATION DISADVANTAGED COORDINATING BOARD THAT:

1. In accordance with Chapter 427, Florida Statutes and Rule 41-2 of the Florida Administrative Code, the Hamilton County Transportation Disadvantaged Coordinating Board supports the designation of a combined designated service area by the Florida Commission for the Transportation Disadvantaged under Florida's Transportation Disadvantaged Program; and

2. In accordance with Chapter 427, Florida Statutes and Rule 41-2 of the Florida Administrative Code, the Hamilton County Transportation Disadvantaged Coordinating Board supports the establishment of a multi-county Transportation Disadvantaged Coordinating Board for Columbia, Hamilton and Suwannee Counties and supports the appointment of members to a multi-county Transportation Disadvantaged Coordinating Board for Columbia, Hamilton and Suwannee Counties by the North Central Florida Regional Planning Council, serving as the Designated Official Planning Agency as designated by the Florida Commission for the Transportation Disadvantaged.

APPROVED AND DULY ADOPTED by the Hamilton County Transportation Disadvantaged Coordinating Board, this 3rd day of May 2013.

Beth Burnam, Chair

Date

RESOLUTION NO. 2013-01

A RESOLUTION OF THE SUWANNEE COUNTY TRANSPORTATION DISADVANTAGED COORDINATING BOARD SUPPORTING THE DESIGNATION OF COLUMBIA, HAMILTON AND SUWANNEE COUNTIES BY THE FLORIDA COMMISSION FOR THE TRANSPORTATION DISADVANTAGED AS A COMBINED DESIGNATED SERVICE AREA UNDER FLORIDA'S TRANSPORTATION DISADVANTAGED PROGRAM AND SUPPORTING THE ESTABLISHMENT OF A MULTI-COUNTY TRANSPORTATION DISADVANTAGED COORDINATING BOARD FOR COLUMBIA, HAMILTON AND SUWANNEE COUNTIES

WHEREAS, Rule 41-2.002(4) of the Florida Administrative Code defines a designated service area as a geographical area recommended by a designated official planning agency, subject to approval by the Florida Commission for the Transportation Disadvantaged;

WHEREAS, the designated service area defines the community where coordinated transportation services will be provided to the transportation disadvantaged;

WHEREAS, the Suwannee County Transportation Disadvantaged Coordinating Board is the Coordinating Board for Florida's Transportation Disadvantaged Program for Suwannee County;

WHEREAS, the purpose of the Suwannee County Transportation Disadvantaged Coordinating Board is to identify local service needs and to provide information, advice and direction to the Community Transportation Coordinator on the coordination of services to be provided to the transportation disadvantaged through the Florida Coordinated Transportation System;

WHEREAS, the Suwannee County Transportation Disadvantaged Coordinating Board supports the designation of Columbia, Hamilton and Suwannee Counties by the Florida Commission for the Transportation Disadvantaged as a combined designated service area under Florida's Transportation Disadvantaged Program; and

WHEREAS, the Suwannee County Transportation Disadvantaged Coordinating Board supports the establishment of a multi-county Transportation Disadvantaged Coordinating Board for Columbia, Hamilton and Suwannee Counties and supports the appointment of members to a multi-county Transportation Disadvantaged Coordinating Board for Columbia, Hamilton and Suwannee Counties by the North Central Florida Regional Planning Council, serving as the Designated Official Planning Agency as designated by the Florida Commission for the Transportation Disadvantaged in accordance with Rule 41-2.012 of the Florida Administrative Code.

NOW, THEREFORE, BE IT RESOLVED BY THE SUWANNEE COUNTY TRANSPORTATION DISADVANTAGED COORDINATING BOARD THAT:

1. In accordance with Chapter 427, Florida Statutes and Rule 41-2 of the Florida Administrative Code, the Suwannee County Transportation Disadvantaged Coordinating Board supports the designation of a combined designated service area by the Florida Commission for the Transportation Disadvantaged under Florida's Transportation Disadvantaged Program; and

2. In accordance with Chapter 427, Florida Statutes and Rule 41-2 of the Florida Administrative Code, the Suwannee County Transportation Disadvantaged Coordinating Board supports the establishment of a multi-county Transportation Disadvantaged Coordinating Board for Columbia, Hamilton and Suwannee Counties and supports the appointment of members to a multi-county Transportation Disadvantaged Coordinating Board for Columbia, Hamilton and Suwannee Counties by the North Central Florida Regional Planning Council, serving as the Designated Official Planning Agency as designated by the Florida Commission for the Transportation Disadvantaged.

APPROVED AND DULY ADOPTED by the Suwannee County Transportation Disadvantaged Coordinating Board, this 3rd day of May 2013.

Jason Bashaw, Chair

Date