



North Central Florida Regional Planning Council

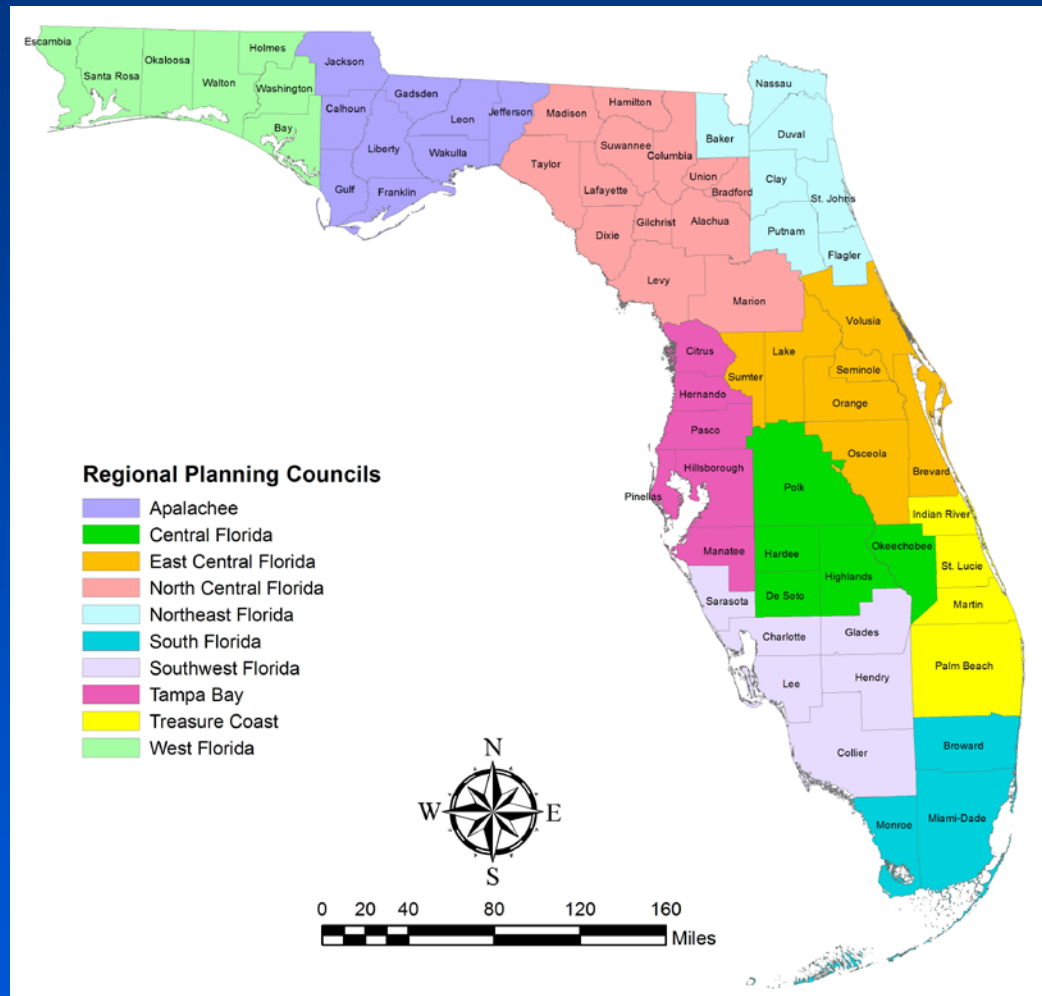


Overview

- ❑ Who We Are
- ❑ What We Do
- ❑ Summary



Regional Planning Councils



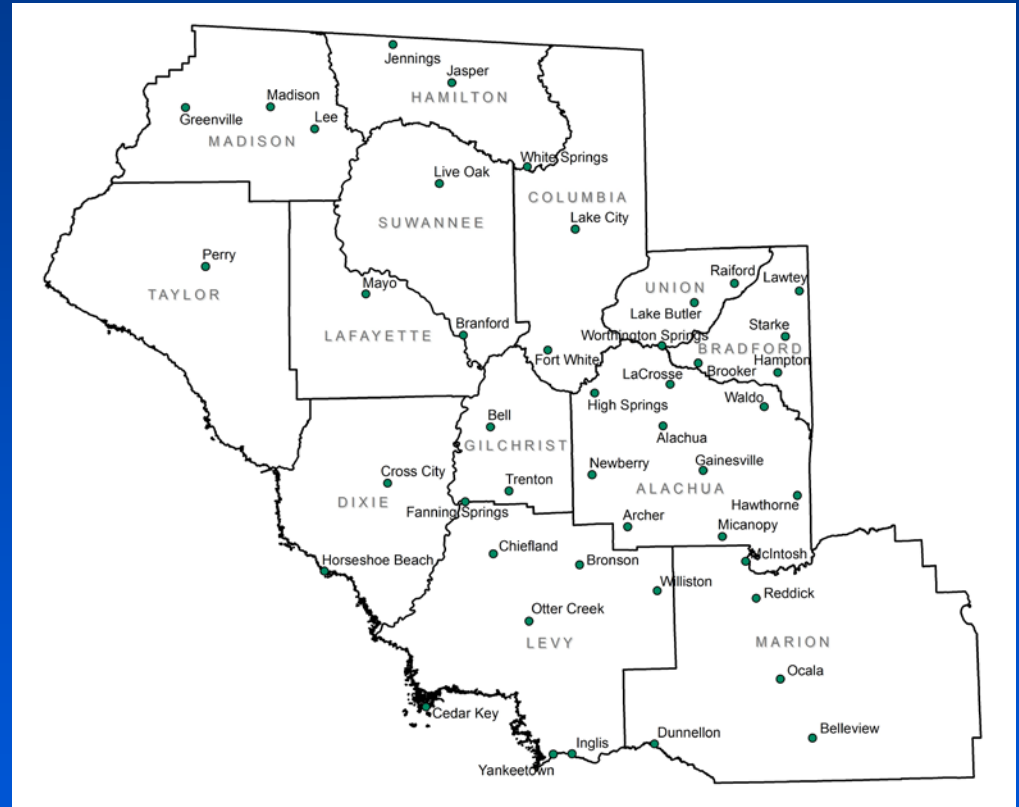
Mission Statement

*To improve the quality of life
of the Region's citizens,
by coordinating growth management,
protecting regional resources,
promoting economic development and
providing technical services to local governments.*



The Region

- ❑ 13 counties and 45 municipalities (13 member cities)
- ❑ 10,000 square miles
- ❑ 900,000 population



The Council

- ❑ 2/3 Local Elected Officials and 1/3 Gubernatorial Appointees
- ❑ Counties Mandatory and Cities Voluntary



The Council

❑ Member Counties

- ❑ Alachua County
- ❑ Bradford County
- ❑ Columbia County
- ❑ Dixie County
- ❑ Gilchrist County
- ❑ Hamilton County
- ❑ Lafayette County
- ❑ Levy County
- ❑ Madison County
- ❑ Marion County
- ❑ Suwannee County
- ❑ Taylor County
- ❑ Union County



The Council

❑ Member Cities

- ❑ Alachua
- ❑ Archer
- ❑ Gainesville
- ❑ Hawthorne
- ❑ High Springs
- ❑ Jasper
- ❑ Lake City
- ❑ Live Oak
- ❑ Madison
- ❑ Newberry
- ❑ Perry
- ❑ Starke
- ❑ Waldo



The Council

❑ Executive Committee Members

- ❑ Rick Davis, Chair
- ❑ Lorene Thomas, Vice-Chair
- ❑ Louie Davis, Secretary-Treasurer
- ❑ Robert Wilford, Executive Committee Member
- ❑ Daniel Riddick, Immediate Past Chair



The Council

❑ Board of Directors

- ❑ LaBarfield Bryant, Jasper
- ❑ Charles Chestnut IV, Alachua County
- ❑ William Hunter, Hamilton County
- ❑ James Montgomery, Columbia County
- ❑ Garth Nobles, Jr., Live Oak
- ❑ Larry Sessions, Suwannee County
- ❑ Kenrick Thomas, Gilchrist County
- ❑ Daniel Webb, Union County
- ❑ Mike Williams, Madison County
- ❑ Stephen Witt, Lake City



The Council

❑ Ex-Officio Members

- ❑ Florida Department of Economic Opportunity
- ❑ Florida Department of Environmental Protection
- ❑ Florida Department of Transportation
- ❑ Southwest Florida
Water Management District
- ❑ St. Johns River
Water Management District
- ❑ Suwannee River
Water Management District



Regional Planning Council Programs

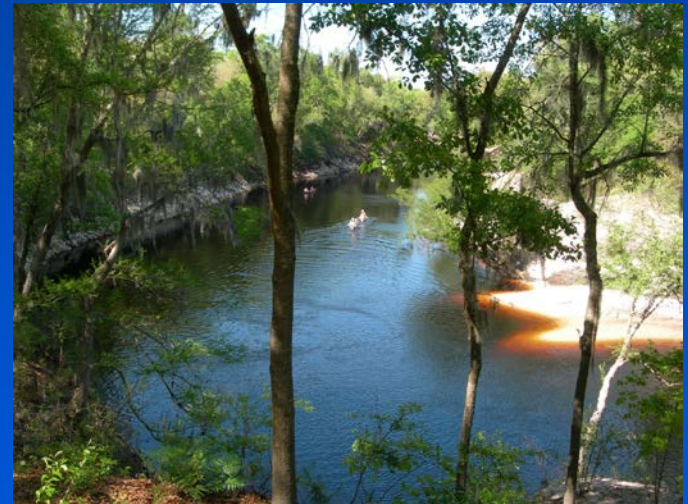
□ Regional

- North Central Florida Strategic Regional Policy Plan contains goals and policies to assist in the preservation of the regional water supply
 - Affordable Housing
 - Economic Development
 - Emergency Preparedness
 - Natural Resources of Regional Significance
 - Regional Transportation



Regional Planning Council Programs

- ❑ Regional Review Activities
 - ❑ Council designated as areawide clearinghouse review agency
 - ❑ Federally funded projects
 - ❑ Other review activities



Regional Planning Council Programs

□ Regional Review Activities

□ 85 projects

- Applications for federal assistance totaling \$32.8 million
- 34 local government comprehensive plan amendments
- 21 U.S. Department of Housing and Urban Development Community Development Block Grant applications



Regional Planning Council Programs

□ Regional Review Activities

□ 85 projects (Continued)

- 24 Federal Transit Administration grant applications

- 3 U.S. Department of Agriculture grant/loan applications

- 3 other review items



Regional Planning Council Programs

- ❑ Public Safety and Regulatory Compliance
 - ❑ Local Emergency Planning Committee
 - ❑ Updated Regional Emergency Response Plan



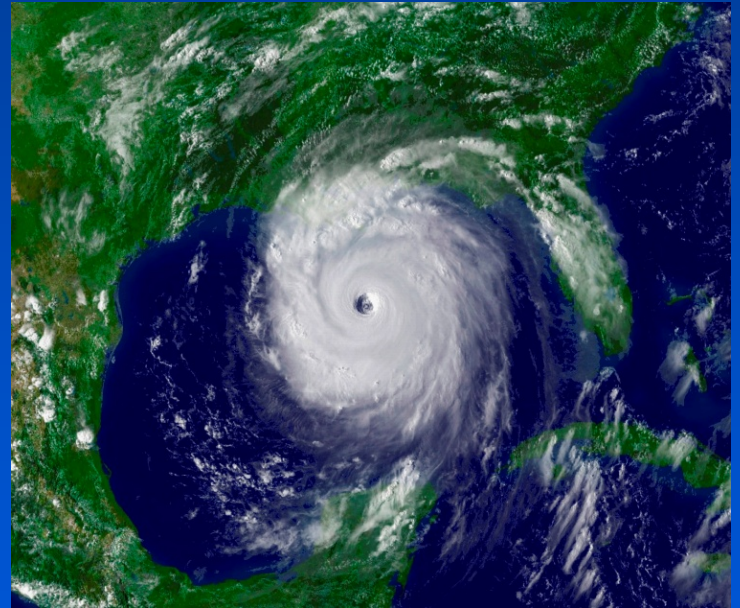
Regional Planning Council Programs

- ❑ Public Safety and Regulatory Compliance
 - ❑ Regional Hazardous Materials Response Team
 - ❑ Alachua County
 - ❑ Bradford County
 - ❑ Columbia County
 - ❑ Dixie County
 - ❑ Gilchrist County
 - ❑ Lafayette County
 - ❑ Suwannee County
 - ❑ Union County
 - ❑ Gainesville
 - ❑ Lake City
 - ❑ Starke



Regional Planning Council Programs

- ❑ Public Safety and Regulatory Compliance
 - ❑ Emergency Management
 - ❑ Updated transportation analysis for Regional Evacuation Study



Regional Planning Council Programs

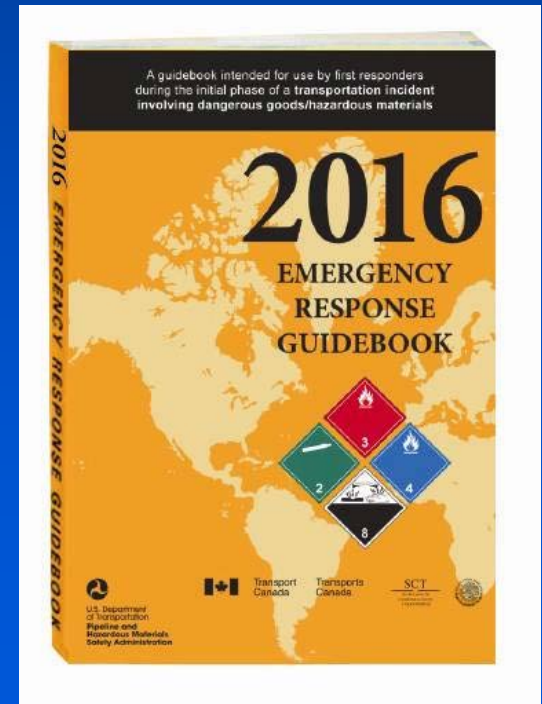
❑ Public Safety and Regulatory Compliance

❑ First Responder Training

❑ Coordinated 26 hazardous materials emergency response training classes

- ❑ Over 350 emergency responders completed over 4,800 hours of training

❑ Distributed copies of Emergency Response Guidebook to first responders



Regional Planning Council Programs

❑ Public Safety and Regulatory Compliance

❑ Hazardous Waste

❑ Conducted hazardous waste compliance site visits for ten counties

- ❑ Bradford County
- ❑ Columbia County
- ❑ Dixie County
- ❑ Gilchrist County
- ❑ Hamilton County
- ❑ Lafayette County
- ❑ Levy County
- ❑ Madison County
- ❑ Suwannee County
- ❑ Union County



Regional Planning Council Programs

❑ Economic Development

❑ Economic Development Planning

- ❑ Council designated an Economic Development District in 1978 by U.S. Department of Commerce, Economic Development Administration
- ❑ Council serves as primary regional economic development planning organization for region

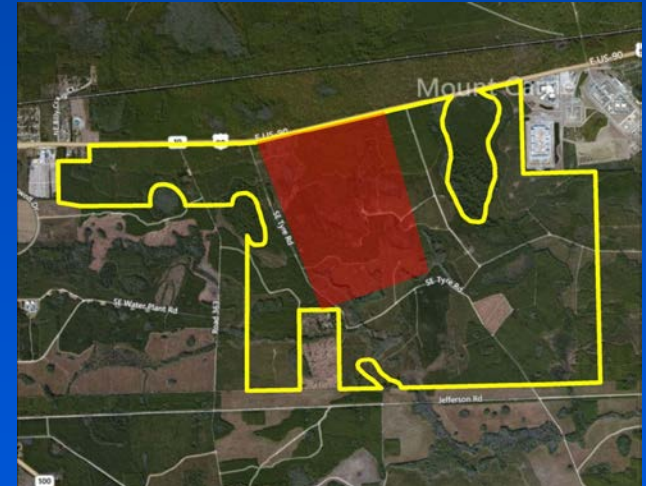


Regional Planning Council Programs

□ Economic Development

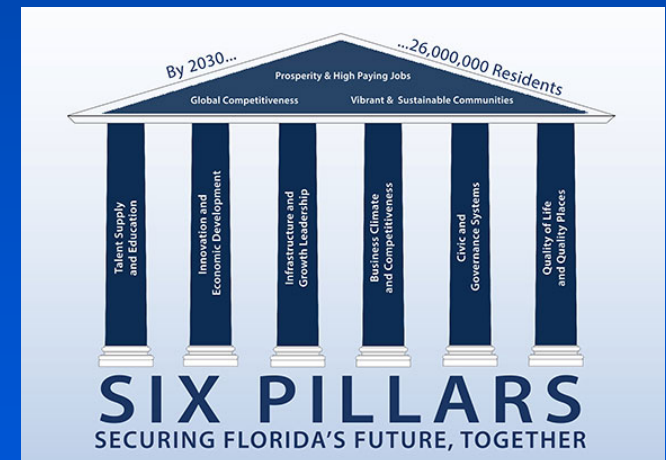
□ Economic Development Planning

- Provided technical assistance to local governments and economic development organizations to promote economic growth of the region
- Completed three economic development project impact analysis reports



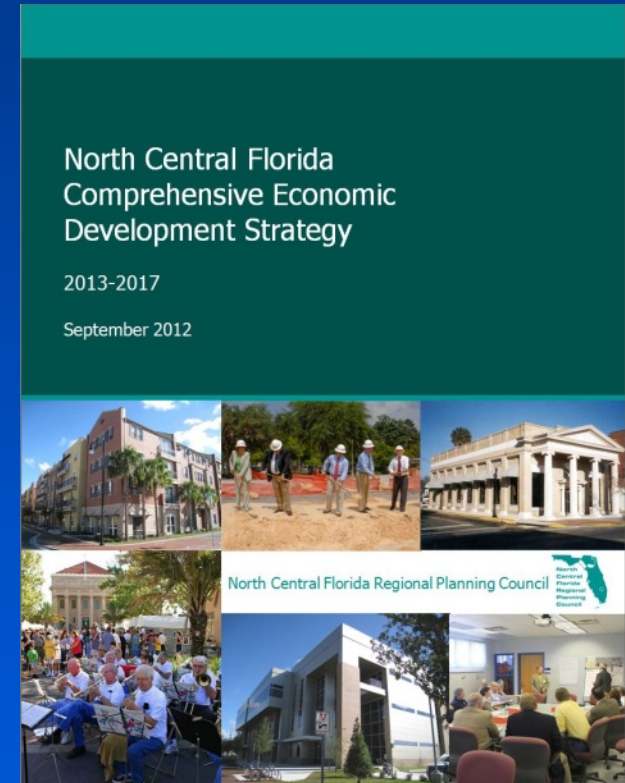
Regional Planning Council Programs

- ❑ Economic Development
 - ❑ Comprehensive Economic Development Strategy
 - ❑ Uses Florida Chamber Foundation Six Pillars to Secure Florida's Future
 - ❑ Coordinates with other regional planning councils
 - ❑ Aligns with State Economic Development Plan and private business



Regional Planning Council Programs

- ❑ Economic Development
 - ❑ Comprehensive Economic Development Strategy
 - ❑ Promotes initiatives that support regional Comprehensive Economic Development Strategy
 - ❑ Reported over 580 jobs created and over \$110 million private investment leveraged

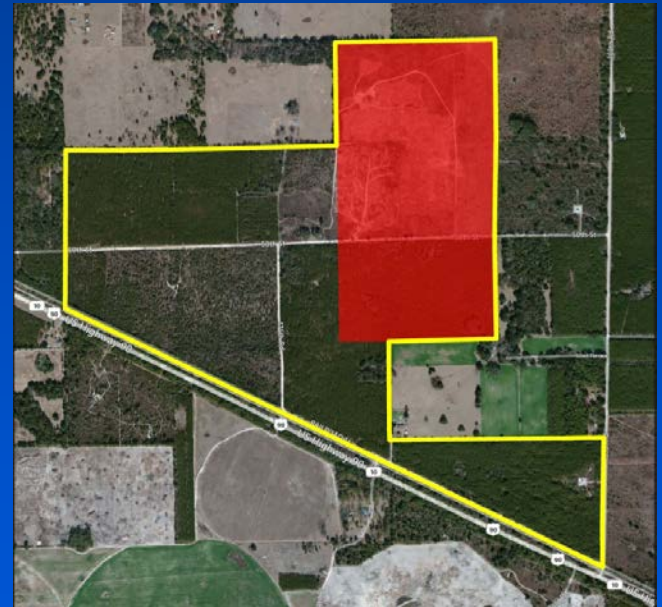


Regional Planning Council Programs

❑ Economic Development

❑ Regional Comprehensive Economic Development Strategies

- ❑ Support two rural economic development catalyst sites
- ❑ Promote regional tourism
- ❑ Create strategies to increase labor force in healthcare and life sciences industries



Regional Planning Council Programs

❑ Economic Development

❑ Regional Comprehensive Economic Development Strategies

- ❑ Seek opportunities to improve multi-modal infrastructure
- ❑ Expand and support regional business incubators and research parks



Regional Planning Council Programs

❑ Economic Development

❑ The Original Florida Tourism Task Force

- ❑ Created by Council in 1992
- ❑ Promotes the development of nature, culture and heritage-based tourism
- ❑ Council provides staff services to Task Force
- ❑ Innovation Award for Online Bicycle Trail Maps



Regional Planning Council Programs

❑ Economic Development

❑ The Original Florida Tourism Task Force

- ❑ Alachua County
- ❑ Bradford County
- ❑ Columbia County
- ❑ Dixie County
- ❑ Gilchrist County
- ❑ Hamilton County
- ❑ Jefferson County
- ❑ Lafayette County
- ❑ Levy County
- ❑ Madison County
- ❑ Suwannee County
- ❑ Taylor County
- ❑ Union County
- ❑ Wakulla County



Regional Planning Council Programs

❑ Economic Development

❑ The Original Florida Tourism Task Force

- ❑ Updated and maintained website
VisitNaturalNorthFlorida.com

- ❑ Coordinated travel
show participation

- ❑ Distributed collateral
materials to meet goals
of Task Force



Regional Planning Council Programs

❑ Local Government Assistance

❑ Comprehensive Planning

- ❑ Assisted counties and cities in complying with Community Planning Act



Regional Planning Council Programs

❑ Local Government Assistance

❑ Comprehensive Planning

❑ Provided comprehensive planning assistance to six counties

- ❑ Bradford County
- ❑ Columbia County
- ❑ Dixie County
- ❑ Lafayette County
- ❑ Taylor County
- ❑ Union County



Regional Planning Council Programs

❑ Local Government Assistance

❑ Comprehensive Planning

❑ Provided comprehensive planning assistance to 11 municipalities

- ❑ Archer
- ❑ Chiefland
- ❑ Fanning Springs
- ❑ High Springs
- ❑ Inglis
- ❑ Lake Butler
- ❑ Lake City
- ❑ Madison
- ❑ Perry
- ❑ Starke
- ❑ Williston



Regional Planning Council Programs

❑ Local Government Assistance

❑ Comprehensive Planning

- ❑ 83 development applications
 - ❑ 26 comprehensive plan map and text amendments
 - ❑ 36 land development regulation map and text amendments
 - ❑ 7 special exceptions and special permits
 - ❑ 14 concurrency assessments



Regional Planning Council Programs

❑ Local Government Assistance

❑ Comprehensive Planning

- ❑ Prepared concurrency assessments for roads, water, sanitary sewer, solid waste, storm water drainage and recreation facilities
- ❑ Assisted three local governments prepare evaluations of comprehensive plans



Regional Planning Council Programs

❑ Local Government Assistance

❑ Community Development Block Grants

❑ Purpose

- ❑ Reduce and reverse community decline and restore community vitality

❑ Grants in four categories

- ❑ Housing
 - ❑ Neighborhood Revitalization
 - ❑ Commercial Revitalization
 - ❑ Economic Development
- ❑ Secured \$55.1 million for 108 projects over 40 years



Regional Planning Council Programs

❑ Local Government Assistance

❑ Community Development Block Grants

- ❑ Assisted with applications for Housing, Commercial Revitalization and Neighborhood Revitalization

- ❑ Bradford County Housing - \$750,000
- ❑ City of Lake City Commercial - \$750,000
- ❑ City of Live Oak Neighborhood - \$700,000



Regional Planning Council Programs

❑ Local Government Assistance

❑ Community Development Block Grants

❑ Provided administrative assistance

- ❑ Suwannee County
Economic - \$3,000,000

- ❑ City of Madison
Housing - \$700,000

- ❑ Town of Mayo
Housing - \$650,000



Regional Planning Council Programs

❑ Transportation

❑ Metropolitan Transportation Planning

❑ 2040 Long Range Transportation Plan

- ❑ Addresses highway, transit, bicycle and pedestrian transportation needs

❑ Transportation Improvement Plan

- ❑ Includes \$176 million of transportation projects for Fiscal Year 2015-16



Regional Planning Council Programs

□ Transportation

□ Metropolitan Transportation Planning

□ State Road 26 Multi-Modal Study

- Assesses conditions to determine automobile, transit, bicycle and pedestrian needs
- Identifies projects to address needs



Regional Planning Council Programs

❑ Transportation

❑ Transportation Disadvantaged

- ❑ Provided access to employment, healthcare, education and other life-sustaining activities for elderly, disabled or low-income residents
- ❑ Coordinated over 265,000 trips in the region
- ❑ Majority of trips were provided for medical purposes



Regional Planning Council Programs

❑ Transportation

❑ Transportation Disadvantaged

❑ Council is official planning agency for

- ❑ Bradford County
- ❑ Columbia County
- ❑ Dixie County
- ❑ Gilchrist County
- ❑ Hamilton County
- ❑ Lafayette County
- ❑ Levy County
- ❑ Madison County
- ❑ Suwannee County
- ❑ Union County



Regional Planning Council Programs

□ Transportation

□ Transportation Disadvantaged

- Metropolitan Transportation Planning Organization for the Gainesville Urbanized Area is the official planning agency for Alachua County



Regional Planning Council Team

Team Leaders

Scott R. Koons, AICP
Executive Director

Andre M. Davis
Finance Director

Dwayne L. Mundy
Public Safety and Regulatory Compliance
Program Director

Kevin D. Parrish
Information Technology and
Property Management Director



Regional Planning Council Team

Team Members

Steven Dopp, Senior Planner

Michael Escalante, AICP, Senior Planner

Carmelita Franco, Planning Administrative Assistant

Lynn Franson-Godfrey, AICP, Senior Planner

Sandra Joseph, Senior Planner

Jean Strong, Executive Assistant to the
Executive Director

Tara Tucker, Secretary II

Lauren Yeatter, AICP, Senior Planner



Summary

- ❑ 10 Regional Planning Councils
- ❑ 2/3 Local Elected Officials and 1/3 Gubernatorial Appointees
- ❑ Planning and Coordinating Role
- ❑ Programs
 - ❑ Regional
 - ❑ Public Safety
 - ❑ Economic Development
 - ❑ Local Government Assistance
 - ❑ Transportation





North Central Florida Regional Planning Council

2009 NW 67th Place
Gainesville, FL 32653-1603
352.955.2200
www.ncfrpc.org

