



North Central Florida Regional Planning Council



Public Safety and Regulatory Compliance



**North
Central
Florida
Regional
Planning
Council**

A map of the North Central Florida region, showing the outlines of Alabama, Georgia, and Florida. The Florida peninsula is highlighted in a light blue color, and the surrounding areas are in a darker blue. The text "North Central Florida Regional Planning Council" is overlaid on the map in a bold, black, sans-serif font.

Dwayne Mundy, Public Safety
and Regulatory Compliance
Program Director

June 12, 2015

Public Safety and Regulatory Compliance

❑ Overview

- ❑ Local Emergency Planning Committee
- ❑ Regional Hazardous Materials Response Team
- ❑ Emergency Management Technical Assistance
- ❑ First Responder Training Program
- ❑ Hazards Analysis for Chemical Releases
- ❑ Hazardous Waste Compliance



Public Safety and Regulatory Compliance

- ❑ Local Emergency Planning Committee
 - ❑ Has the Responsibility to increase chemical safety in our communities
 - ❑ Accomplished through increasing response capability and accident prevention



Public Safety and Regulatory Compliance

- ❑ Local Emergency Planning Committee
 - ❑ Planning
 - ❑ Training
 - ❑ Reviewing
 - ❑ Exercising
 - ❑ How-to-Comply Assistance
 - ❑ Public Education
 - ❑ Chemical Inventories to Emergency Responders



Public Safety and Regulatory Compliance

- ❑ Local Emergency Planning Committee
 - ❑ Annual meeting and workshops for all facilities with reportable hazardous materials
 - ❑ Improving coordination with local fire departments, emergency management and regional hazmat team
 - ❑ Local emergency responders need to know how to access information on locally stored chemicals



Public Safety and Regulatory Compliance

❑ Regional Hazardous Materials Response Team

- ❑ Alachua County
- ❑ Bradford County
- ❑ Columbia County
- ❑ Dixie County
- ❑ Gilchrist County
- ❑ Lafayette County
- ❑ Suwannee County
- ❑ Union County
- ❑ Gainesville
- ❑ Lake City
- ❑ Starke

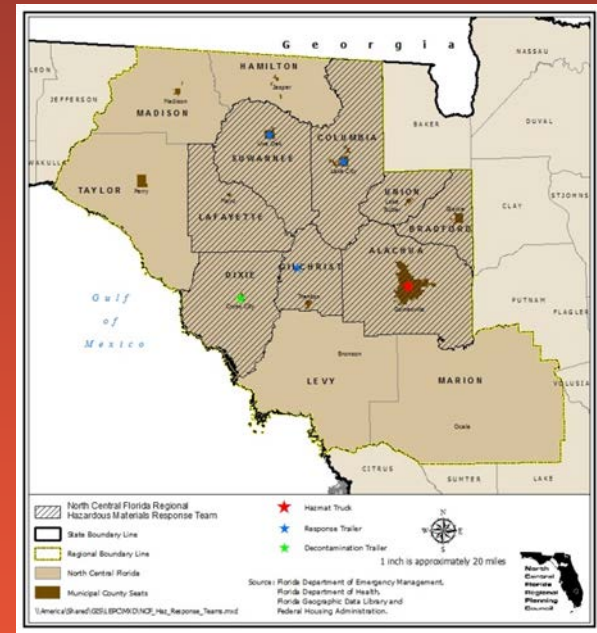


Public Safety and Regulatory Compliance

□ Regional Hazardous Materials Response Team

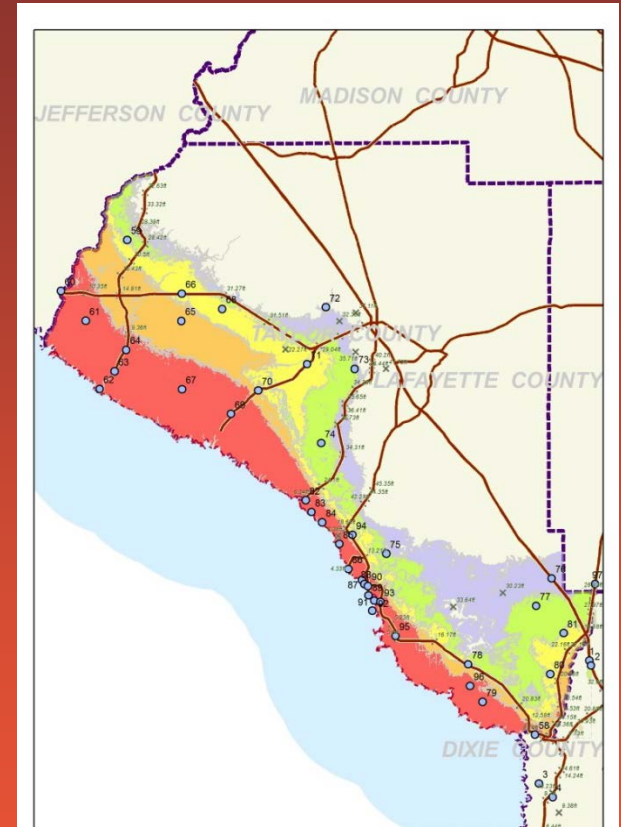
□ Potential New Members

- Taylor County
- Levy County
- City of Madison



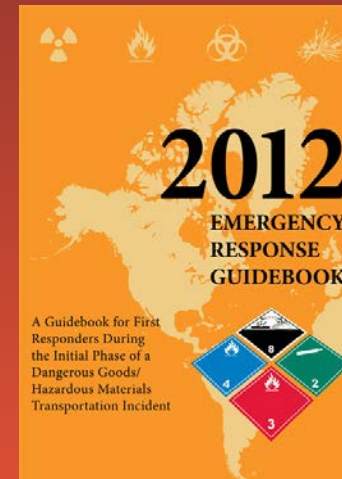
Public Safety and Regulatory Compliance

- Emergency Management Technical Assistance
 - Directional Hurricane Surge Maps for Dixie, Gilchrist, Lafayette and Taylor Counties
 - Updating Transportation Study and Clearance Times



Public Safety and Regulatory Compliance

- ❑ First Responder Training Program
 - ❑ Awareness (4 or 8 hr)
 - ❑ Operations (24 hr)
 - ❑ Technician (160 hr)
 - ❑ Incident Commander (Operations +24 hr)
 - ❑ HazMedic (24 hr)
 - ❑ Technician Refresher (16 hr)



Public Safety and Regulatory Compliance

❑ First Responder Training Program

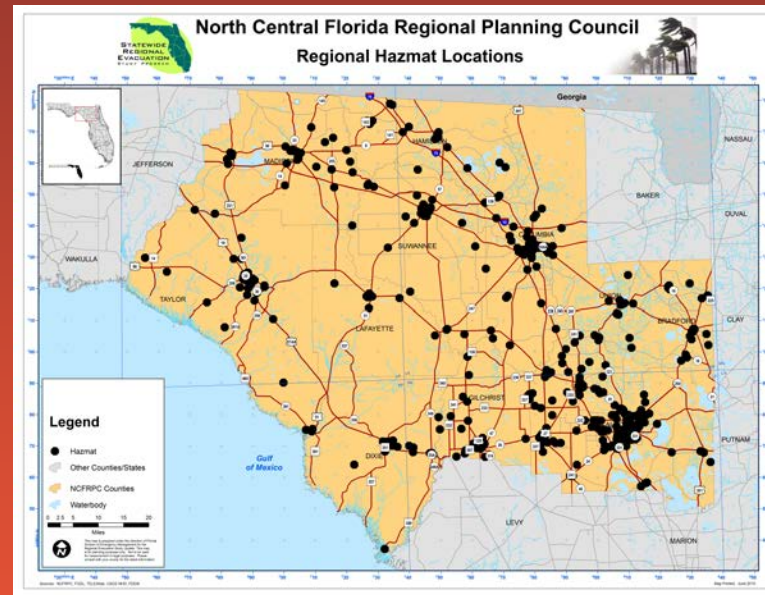
- ❑ Coordinated 27 hazardous materials emergency response classes with 333 emergency responders completing 5,273 hours of training (2014)
- ❑ Public Sector Employer Training Responsibility
- ❑ Free Four-Hour Classes Available for Local Government Employees who might discover a spill and have a duty to report it



Public Safety and Regulatory Compliance

❑ Hazards Analyses for Chemical Releases

- ❑ Columbia County
- ❑ Dixie County
- ❑ Hamilton County
- ❑ Lafayette County
- ❑ Levy County
- ❑ Madison County
- ❑ Marion County
- ❑ Taylor County



Public Safety and Regulatory Compliance

- Hazards Analyses Scenarios for Worst Case Chemical Releases
- Anhydrous Ammonia:



Public Safety and Regulatory Compliance

❑ Hazards Analyses Scenarios for Worst Case Chemical Releases

❑ Chlorine:

- ❑ 150 Pound Cylinder (0.5 mile)
- ❑ Ton Container (3.1 miles)
- ❑ 90-Ton Rail Car (10 miles)



Public Safety and Regulatory Compliance

❑ Hazardous Waste Compliance

❑ Conducted hazardous waste compliance site visits

- ❑ Bradford County
- ❑ Columbia County
- ❑ Dixie County
- ❑ Gilchrist County
- ❑ Hamilton County
- ❑ Lafayette County
- ❑ Levy County
- ❑ Madison County
- ❑ Suwannee County
- ❑ Union County



Public Safety and Regulatory Compliance

❑ Hazardous Waste Compliance

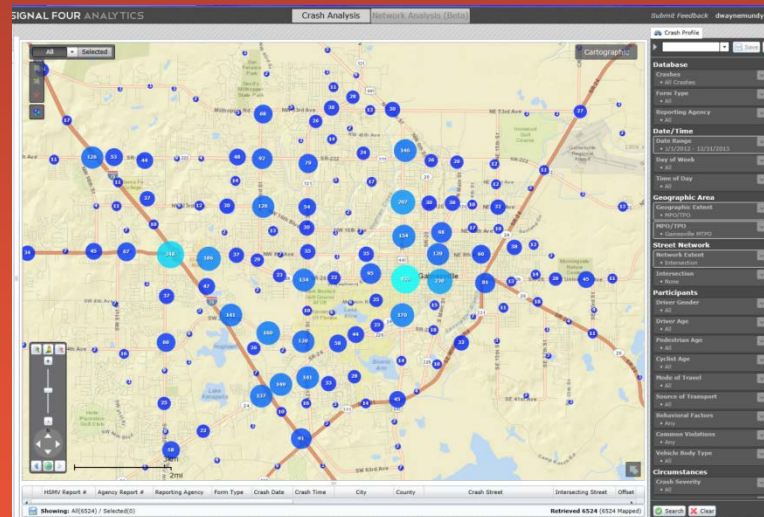
- ❑ Approximately 120 site visits per year
- ❑ Florida Statutes requires counties to conduct
- ❑ Helps businesses save money and stay out of trouble



Public Safety and Regulatory Compliance

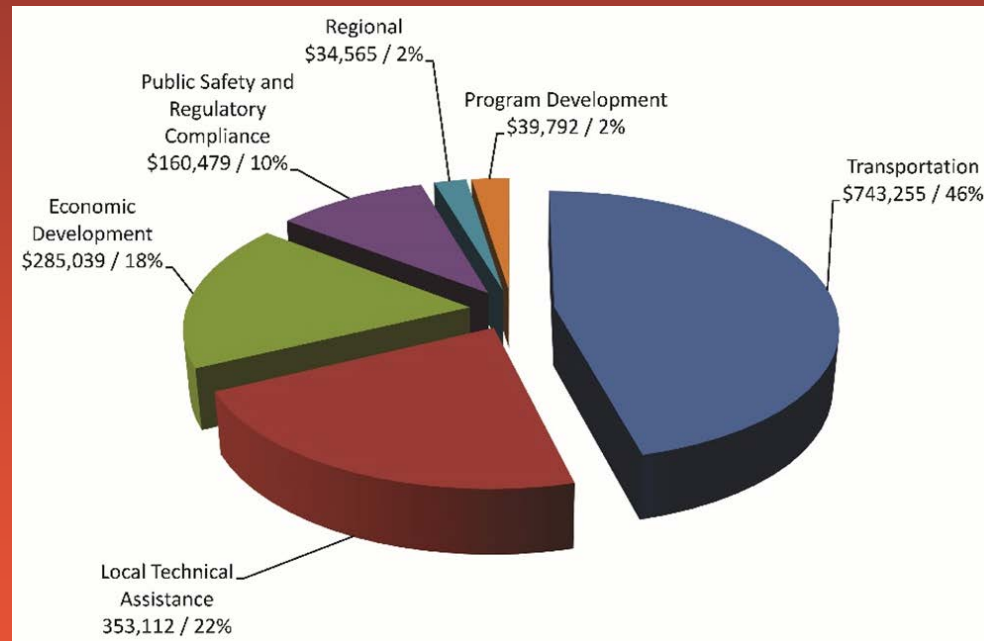
❑ Transit Safety Study (On Going)

- ❑ Accident Data in Geographic Information System Format
- ❑ Ability to Analyze and Identify Most Dangerous Bus Stops
- ❑ Signal Four Analytics – University of Florida



Public Safety and Regulatory Compliance

In 2014 - \$160,479 / 10%



Public Safety and Regulatory Compliance

❑ Summary

- ❑ Local Emergency Planning Committee
- ❑ Regional Hazardous Materials Response Team
- ❑ Emergency Management Technical Assistance
- ❑ First Responder Training Program
- ❑ Hazards Analysis for Chemical Releases
- ❑ Hazardous Waste Compliance



Public Safety and Regulatory Compliance

Contact Information:

Voice: 352.955.2200, ext. 108

Cell: 352.318.2544

Fax: 352.955.2209

mundy@ncfrpc.org





North Central Florida Regional Planning Council

2009 NW 67th Place
Gainesville, FL 32653-1603
352.955.2200
www.ncfrpc.org

