



North Central Florida Regional Planning Council



North Central Florida Strategic Regional Policy Plan



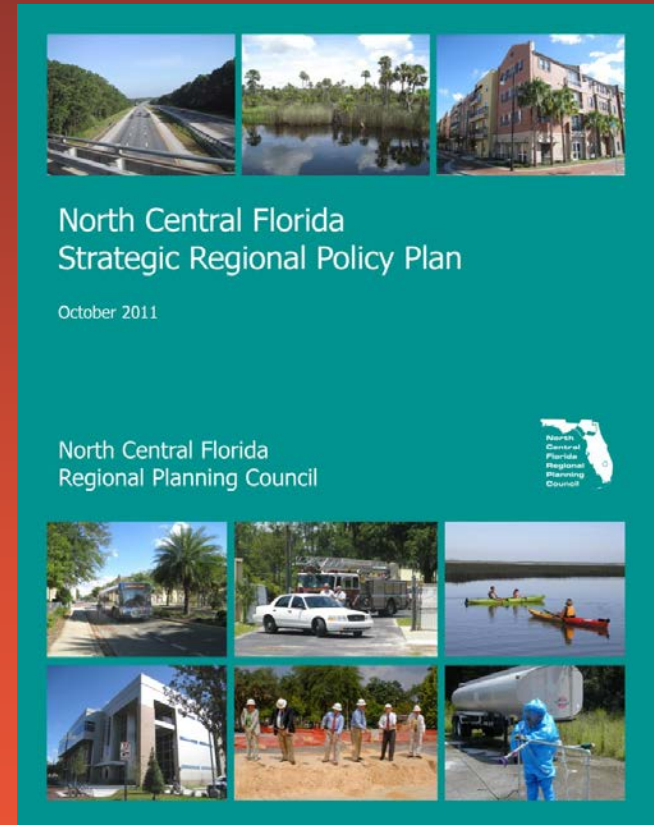
**North
Central
Florida
Regional
Planning
Council**

Steven Dopp, Senior Planner
Regional Planning

June 12, 2015

Overview

- ❑ What is a Strategic Regional Policy Plan?
- ❑ Regional Plan History
- ❑ How is it Used?
- ❑ Strategic Regional Subject Areas
- ❑ Summary



What is a Strategic Regional Policy Plan?

- ❑ A long-range guide for physical, economic, and social development of the region
- ❑ Focus on regional rather than local resources and facilities
- ❑ Strategic rather than comprehensive
- ❑ Must be consistent with and further the State Comprehensive Plan



North Central Florida Regional Plan History

- ❑ First Regional Plan adopted by the Council in 1979
- ❑ Comprehensive Regional Policy Plan adopted by the Council July 1, 1987
- ❑ North Central Florida Strategic Regional Policy Plan adopted by the Council May 23, 1996
- ❑ Amended August 28, 1997, February 27, 2003 and October 11, 2011



How is it Used?

- Basis for Regional Review of
 - Local Government Comprehensive Plans by the Council and by the State
 - Developments of Regional Impact
 - Federally Assisted Projects
 - Other Regional Comment Functions



Strategic Regional Subject Areas

- ❑ Affordable Housing
- ❑ Economic Development
- ❑ Emergency Preparedness
- ❑ Natural Resources of Regional Significance
- ❑ Regional Transportation



Strategic Regional Subject Areas

- ❑ Conditions and Trends
- ❑ Problems, Needs and Opportunities
- ❑ Regional Goals and Policies
- ❑ Regional Indicators



Affordable Housing

- ❑ Conditions and Trends
 - ❑ Over 50 percent of region's very-low income households spend more than 30 percent of income on housing
 - ❑ The region's wages increased at a rate less than the average mortgage increase



Affordable Housing

- Problems, Needs and Opportunities
 - Need to reduce percentage of low-income households who spend more than 30 percent of income on housing
 - Need to update Development of Regional Impact affordable housing analysis methodology



Affordable Housing

□ Goals and Policies

- Goal. To reduce the percentage of the region's very low-, low- and moderate-income households spending 30.0 percent or more of their annual household income on housing
- Goal. To mitigate significant affordable housing impacts associated with Developments of Regional Impact



Economic Development

- Economic Development Subject Area Contains Council-adopted Comprehensive Economic Development Strategies



Economic Development

□ Conditions and Trends

- Few urban areas in region have excess water and sewer capacity. Not all of the region's urban areas have municipal water and sewer systems
- Local resources are scarce - the combined taxable value of all north central Florida counties less than the average taxable value of a single Florida county



Economic Development

□ Conditions and Trends

- Most north central Florida counties are near or at 10 mil millage rate cap



Economic Development

- ❑ Problems, Needs and Opportunities
 - ❑ An opportunity for tourism development
 - ❑ Need for a skilled labor force
 - ❑ Need for additional infrastructure, particularly water and sanitary sewer
 - ❑ An opportunity for regional cooperation and facilities



Economic Development

□ Goals and Policies

- Goal. To diversify the economy of the region and thereby increase the level of employment opportunities and decrease out-migration of productive members of the labor force. This includes non-traditional job sectors and high-skill, high-wage job sectors



Economic Development

□ Goals and Policies

- Goal. To guide infrastructure to areas where needed, and where development would not strain already overloaded infrastructure
- Goal. To encourage regional or multi-county cooperation wherever possible to avoid duplication and to lower costs



Emergency Preparedness

- Conditions and Trends
 - Planning for Coastal Storms
 - Riverine and Freshwater Flooding
 - Tornadoes
 - Regionally Significant Emergency Preparedness Facilities
 - Hazardous Materials Releases
 - Mutual Aid Agreements



Emergency Preparedness

- ❑ Problems, Needs & Opportunities
 - ❑ Need Weather Station Radio to Better Serve Suwannee County
 - ❑ Need a Weather Monitoring Buoy in Gulf of Mexico 10 to 50 miles Southwest of Steinhatchee
 - ❑ Need Emergency Warning Sirens in Some Coastal Communities



Emergency Preparedness

- Problems, Needs & Opportunities
 - Opportunity to Make Flood Hazard Insurance Available in all North Central Florida Local Governments
 - Need and Opportunity for Local Governments to Receive Assistance from Other Local Governments During Emergencies by Signing Statewide Mutual Aid Agreement



Natural Resources of Regional Significance

- What is a Natural Resource of Regional Significance?

“... a natural resource or system of interrelated natural resources, that due to its function, size, rarity, or endangerment retains or provides benefit of regional significance to the natural or human environment.”
(27E-5.002(4), Florida Administrative Code)



Natural Resources of Regional Significance

- Conditions and Trends
 - 213 natural resources of regional significance
 - Sizes range from 1 acre (a spring) to the entire region (Floridan Aquifer)
 - Classified as Coastal and Marine Resources, Groundwater Resources, Natural Systems, Planning and Resource Management Areas, and Surface Water Systems

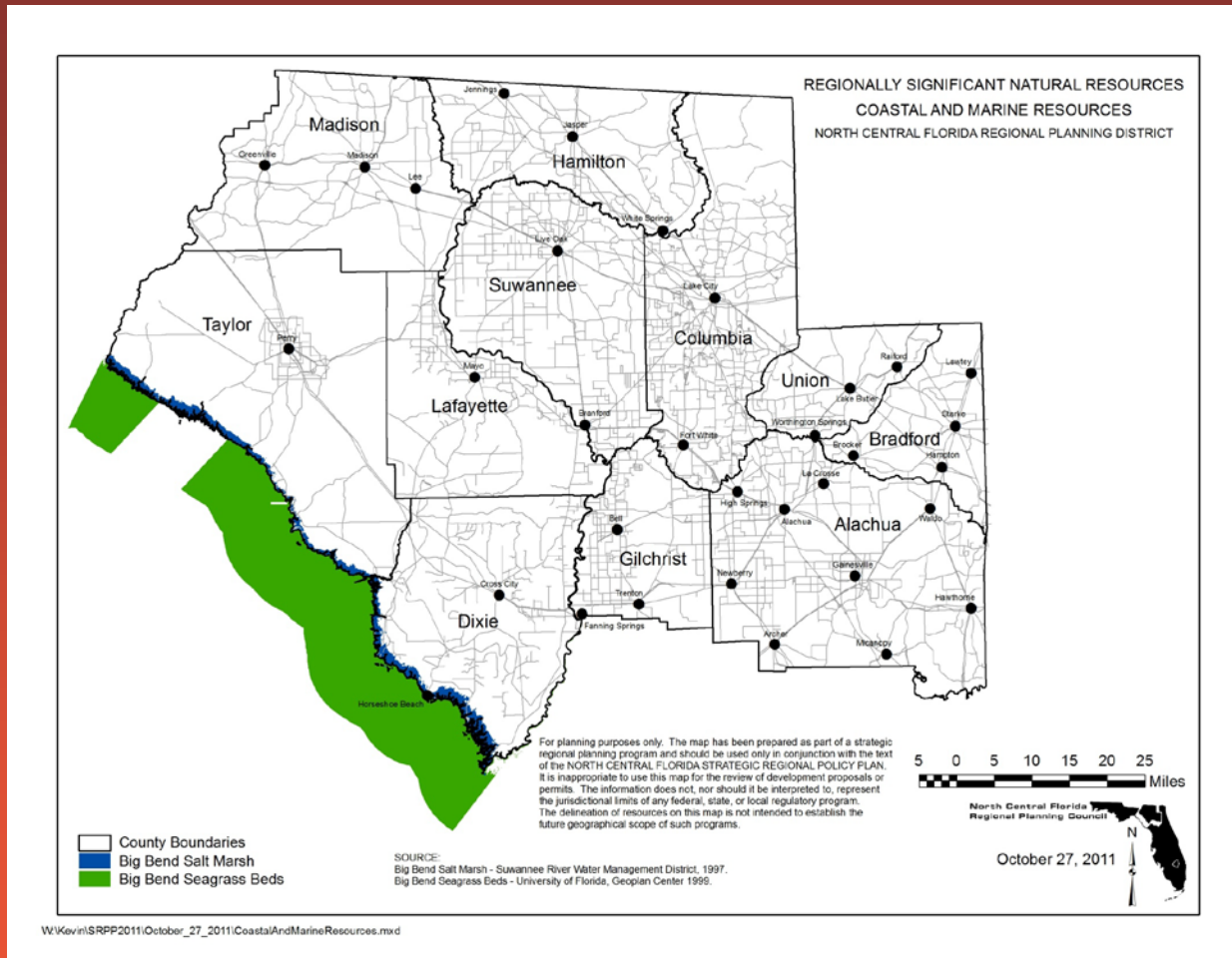


Natural Resources of Regional Significance

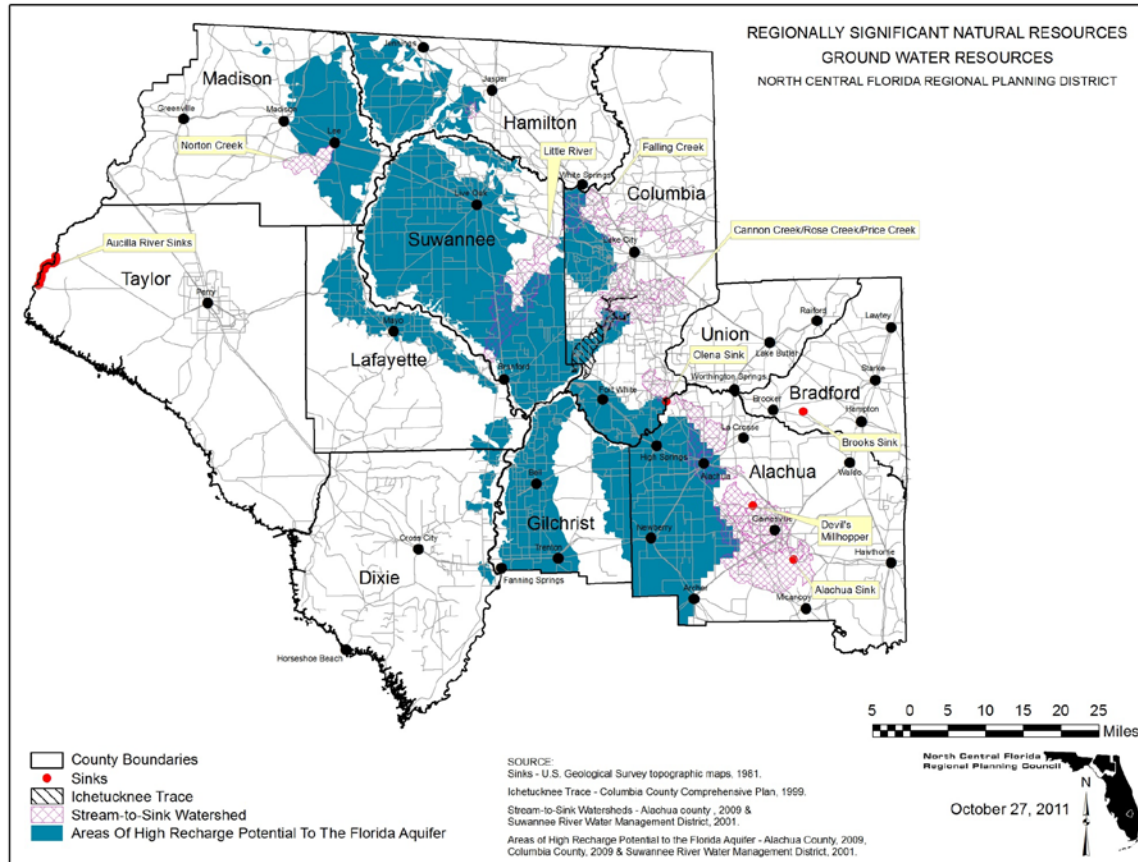
- ❑ Conditions and Trends
 - ❑ No-drill buffer off Dixie and Taylor County coastline to extent of Big Bend Seagrass Beds
 - ❑ High Aquifer Recharge Area Maps in Alachua and Columbia Counties based on County-prepared aquifer vulnerability maps
 - ❑ Regional Ecological Greenway is a Natural Resource of Regional Significance



Coastal & Marine Resources



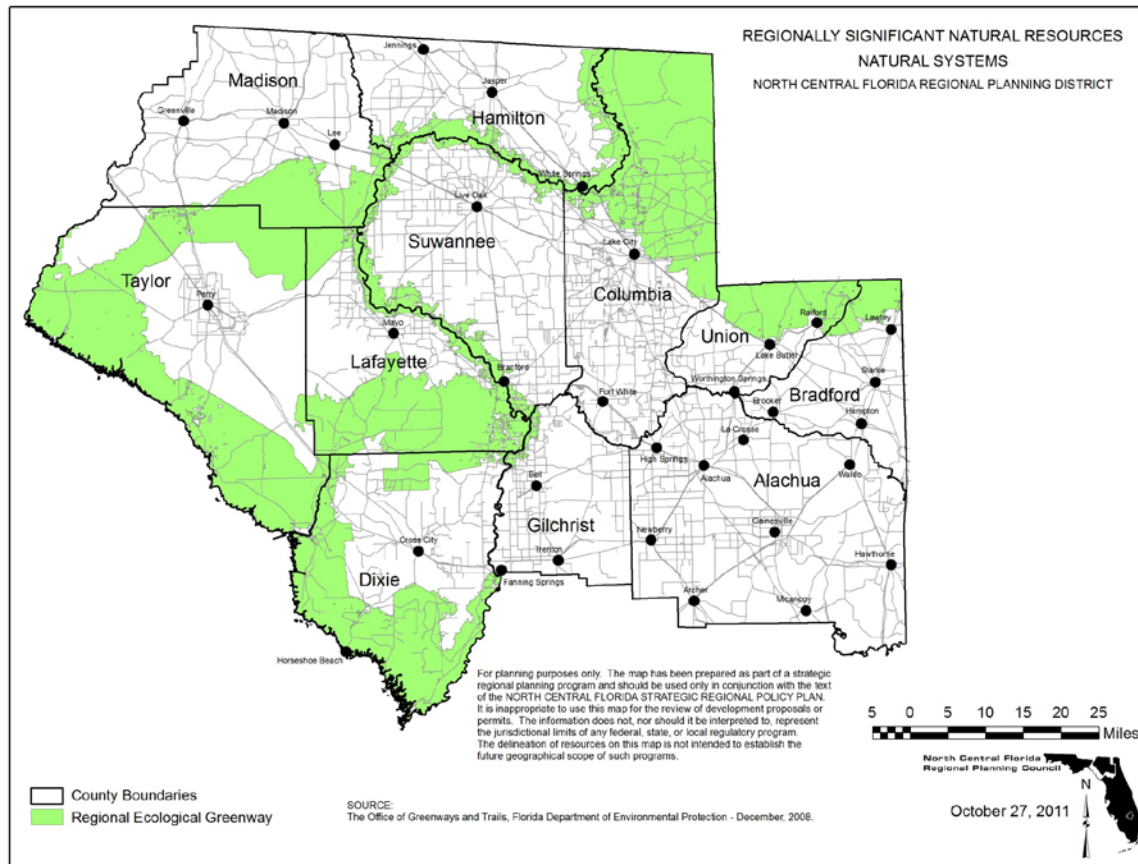
Groundwater Resources



W:\Kevin\SRPP2011\October_27_2011\GroundWaterResources2.mxd



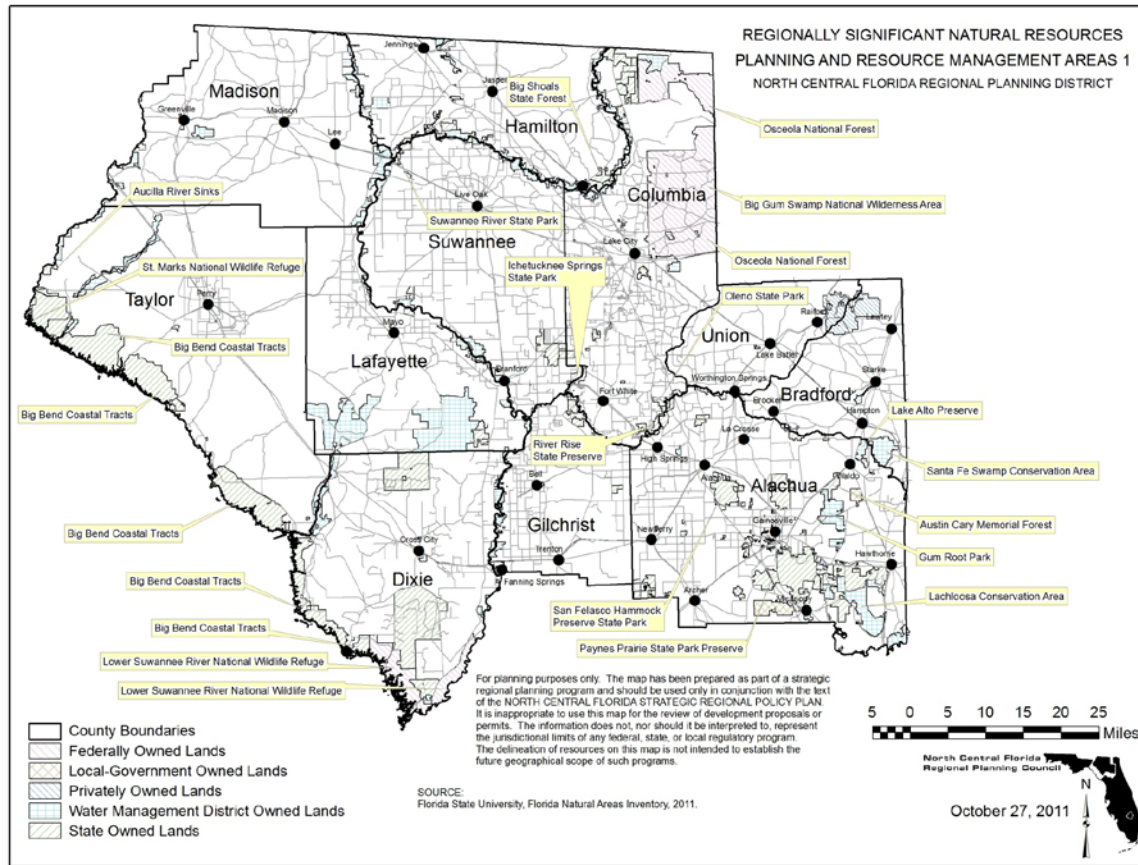
Natural Systems



W:\Kevin\SRPP2011\October_27_2011\NaturalSystems.mxd



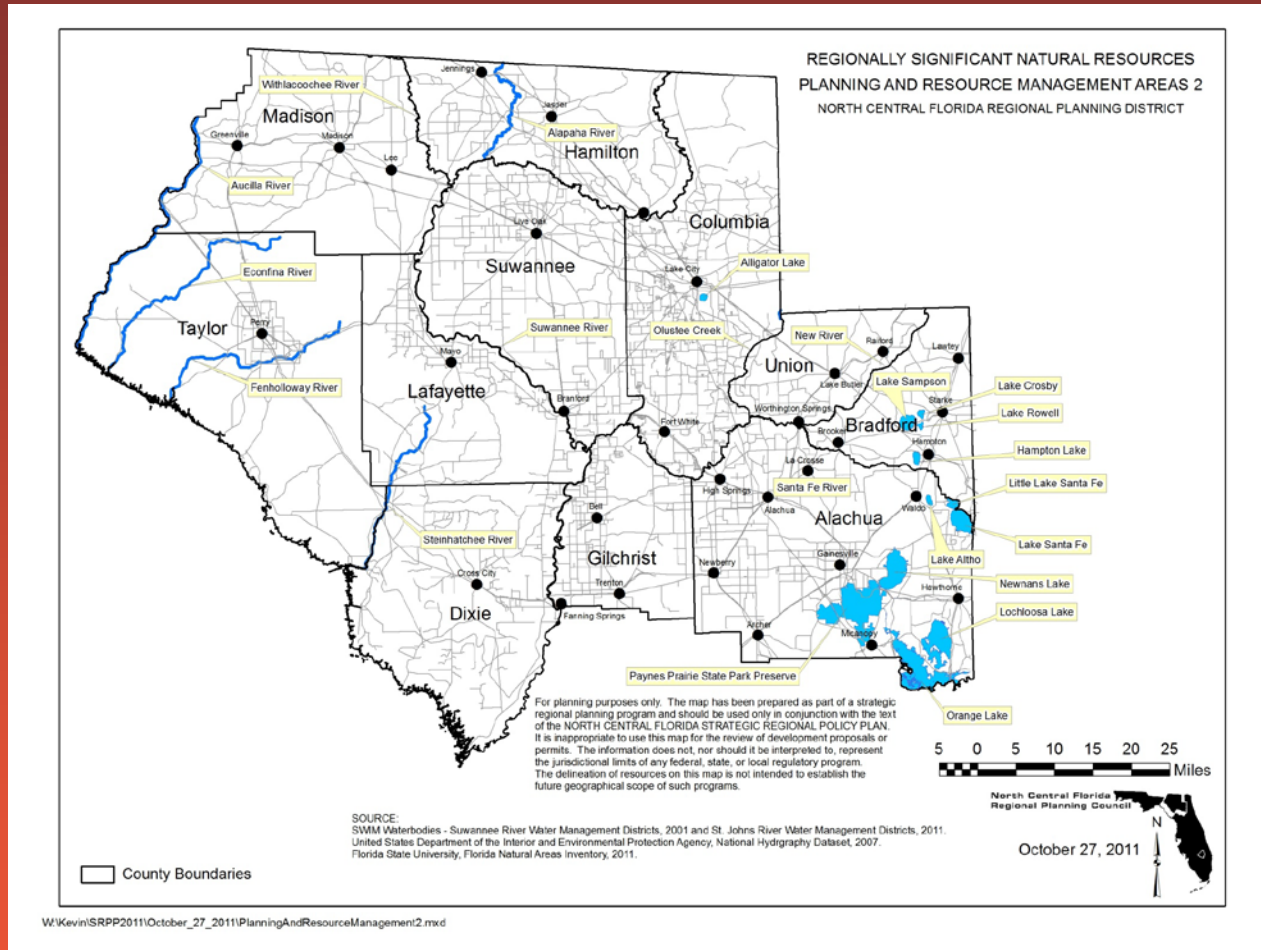
Planning & Management Areas



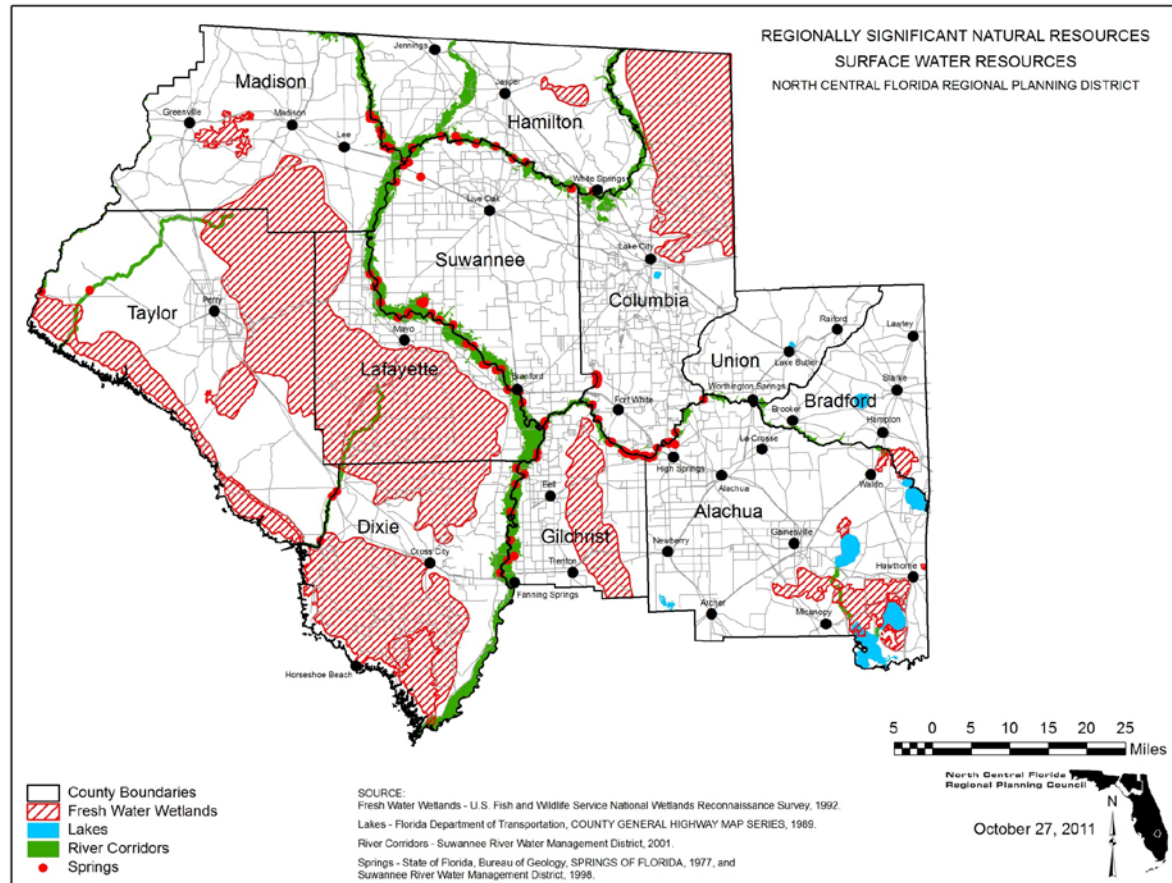
W:\Kevin\SRPP2011\October_27_2011\PlanningAndResourceManagement1.mxd



Planning & Management Areas



Surface Water Resources



W:\Kevin\SRPP\2011\October_27_2011\SurfaceWaterResources.mxd



Natural Resources of Regional Significance

- ❑ Problems, Needs and Opportunities
 - ❑ Need to preserve Big Bend coastal and marine resources
 - ❑ Need to maintain adequate groundwater supply for future generations
 - ❑ Need to ensure survival of native flora and fauna
 - ❑ Need to balance environmental concerns with needs of industry



Natural Resources of Regional Significance

□ Goals and Policies

- Goal. To use the natural resources of the region in sustainable manner, such as:
- Policy. To encourage the use of low impact development techniques within Natural Resources of Regional Significance
- Policy. To encourage the use of energy conservation design principles



Natural Resources of Regional Significance

□ Goals and Policies

- Policy. To discourage the transfer of water between water management districts until receiving jurisdiction has implemented all practicable water supply alternatives and conservation measures
- Policy. To encourage cooperative efforts to develop local and regional water supplies within water management districts instead of transporting water across district boundaries, and use sources nearest the area of use whenever practicable



Natural Resources of Regional Significance

□ Goals and Policies

- Policy. To discourage transfer of groundwater and surfacewater across water management district boundaries where current and projected water needs of the transfer area cannot be met
- Policy. To encourage water management districts to take into account minimum flows and levels of adjoining districts

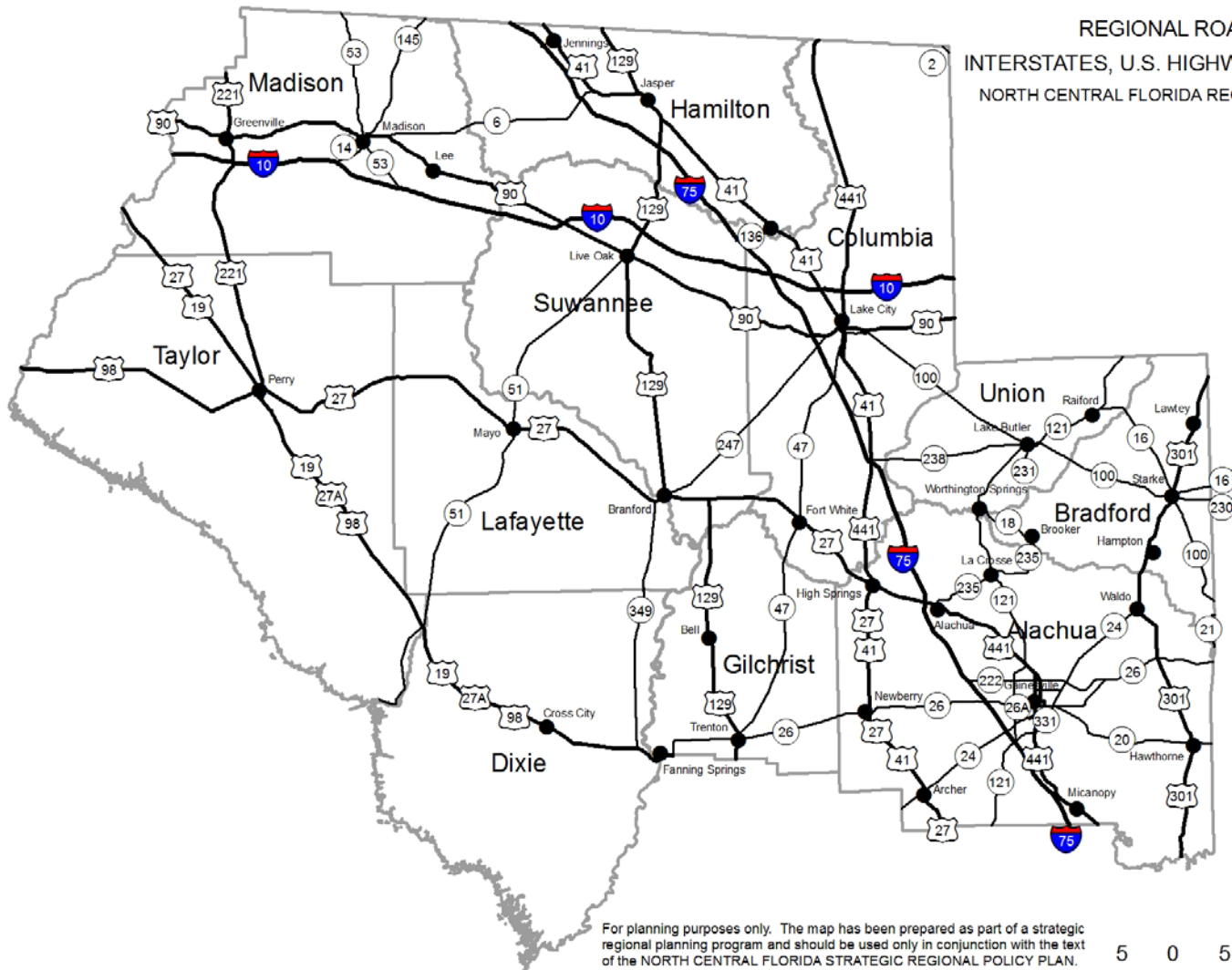


Regional Transportation

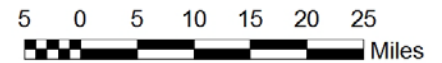
- ❑ Regional Transportation Facilities
 - ❑ Public Transit Service Providers
 - ❑ Regional Rail Lines
 - ❑ Gainesville Regional Airport
 - ❑ Regional Road Network



REGIONAL ROAD NETWORK
INTERSTATES, U.S. HIGHWAYS AND STATE ROADS
 NORTH CENTRAL FLORIDA REGIONAL PLANNING DISTRICT



For planning purposes only. The map has been prepared as part of a strategic regional planning program and should be used only in conjunction with the text of the NORTH CENTRAL FLORIDA STRATEGIC REGIONAL POLICY PLAN. It is inappropriate to use this map for the review of development proposals or permits. The information does not, nor should it be interpreted to, represent the jurisdictional limits of any federal, state, or local regulatory program. The delineation of resources on this map is not intended to establish the future geographical scope of such programs.



North Central Florida
 Regional Planning Council

May 1, 2009



- Interstate
- U.S. Road
- State Road
- County Boundaries

SOURCE:
 FLORIDA DEPARTMENT OF TRANSPORTATION, 2005.

Regional Transportation

- ❑ Transportation Planning Best Practices
 - ❑ Enhance Road Network Connectivity
 - ❑ Promote Access Management Strategies
 - ❑ Develop Multi-Modal Transportation Systems



Summary

- ❑ A Long-Range Guide for the Development of the Region
- ❑ Focus is Regional Rather than Local
- ❑ Basis for Council review of all Activities, Including Local Government Comprehensive Plans



North Central Florida Strategic Regional Policy Plan

For more information

- www.ncfrpc.org
(see Council Publications,
Strategic Regional Policy Plan)
- Steven Dopp, dopp@ncfrpc.org
352-955-2200, ext. 109





North Central Florida Regional Planning Council

209 NW 67th Place
Gainesville, FL 32653-1603
352.955.2200
www.ncfrpc.org

