

Dwayne Mundy, Director
Public Safety and Regulatory Compliance,
352-955-2200 ext. 108

mundy@ncfrpc.org

www.ncflepc.org

North Central Florida
Regional Planning Council



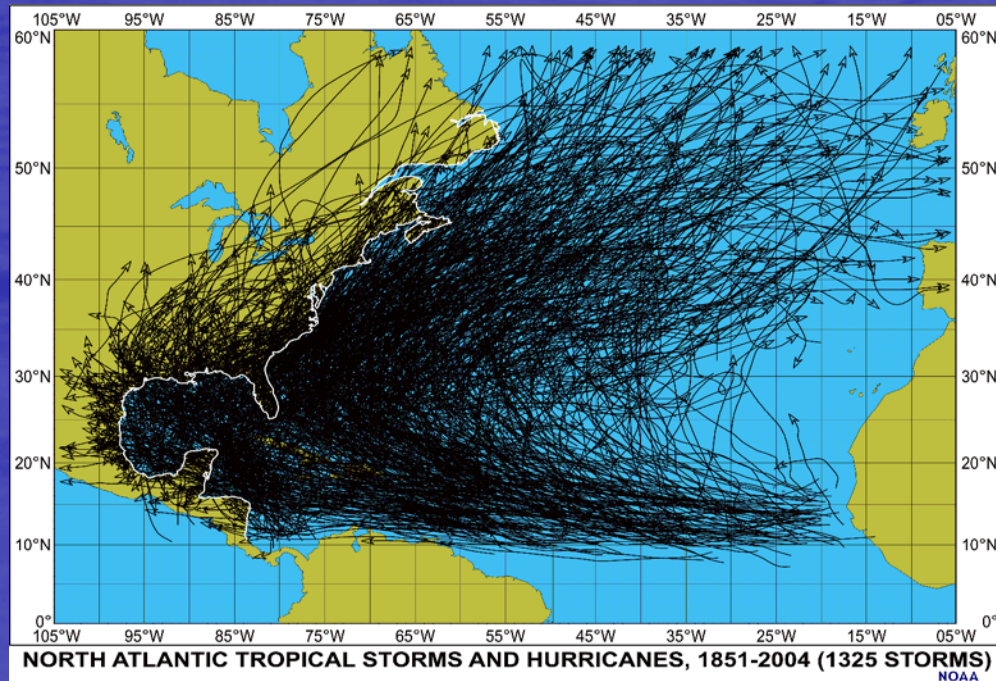
June 11, 2010

Today's Issues

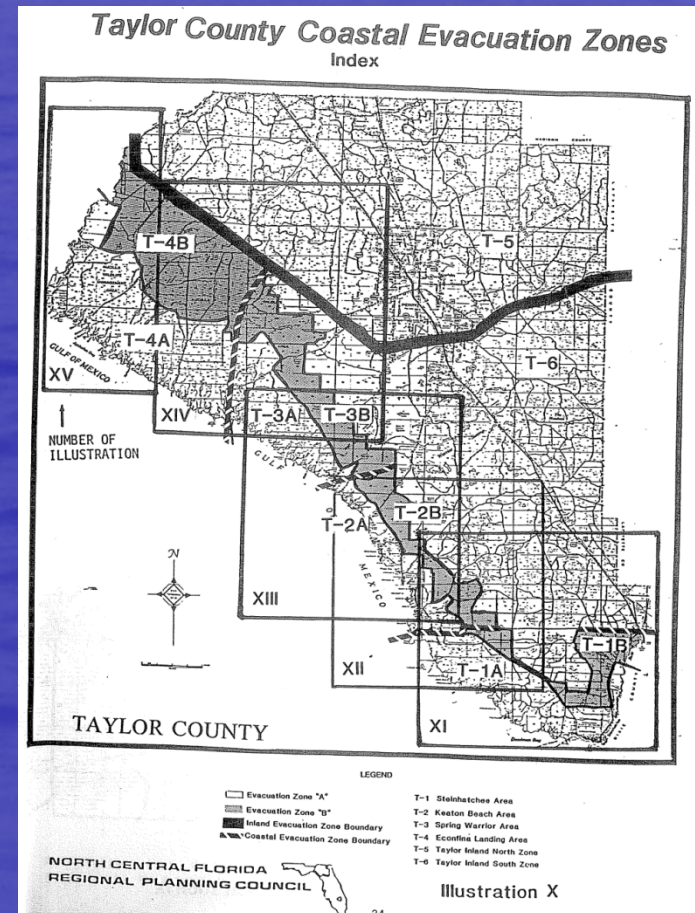
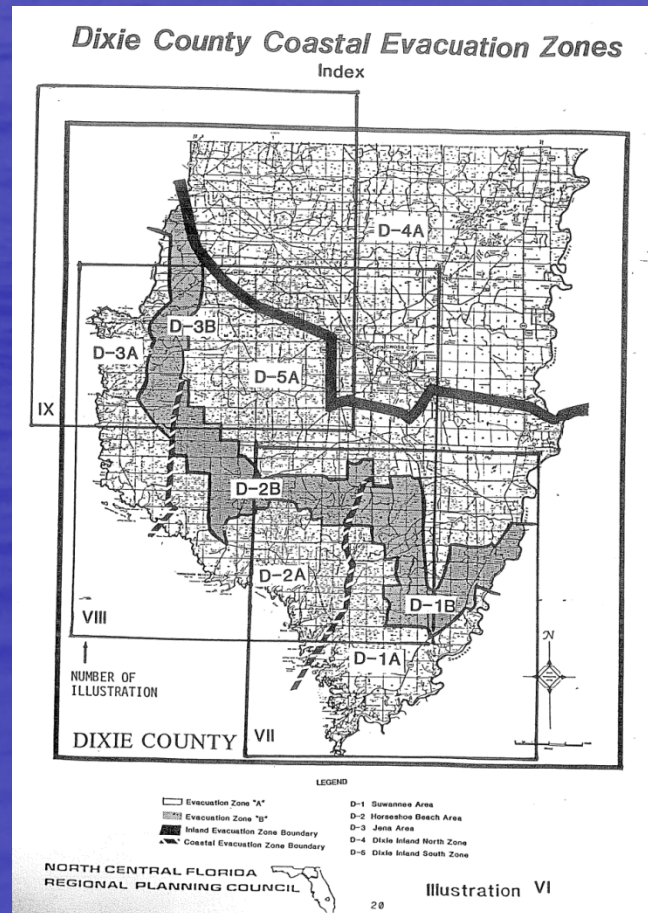
1. Regional Evacuation Study
2. Hazardous Waste Compliance
3. Tactical Interoperable
Communications
4. Current Issues in Hazardous
Materials Emergency Response



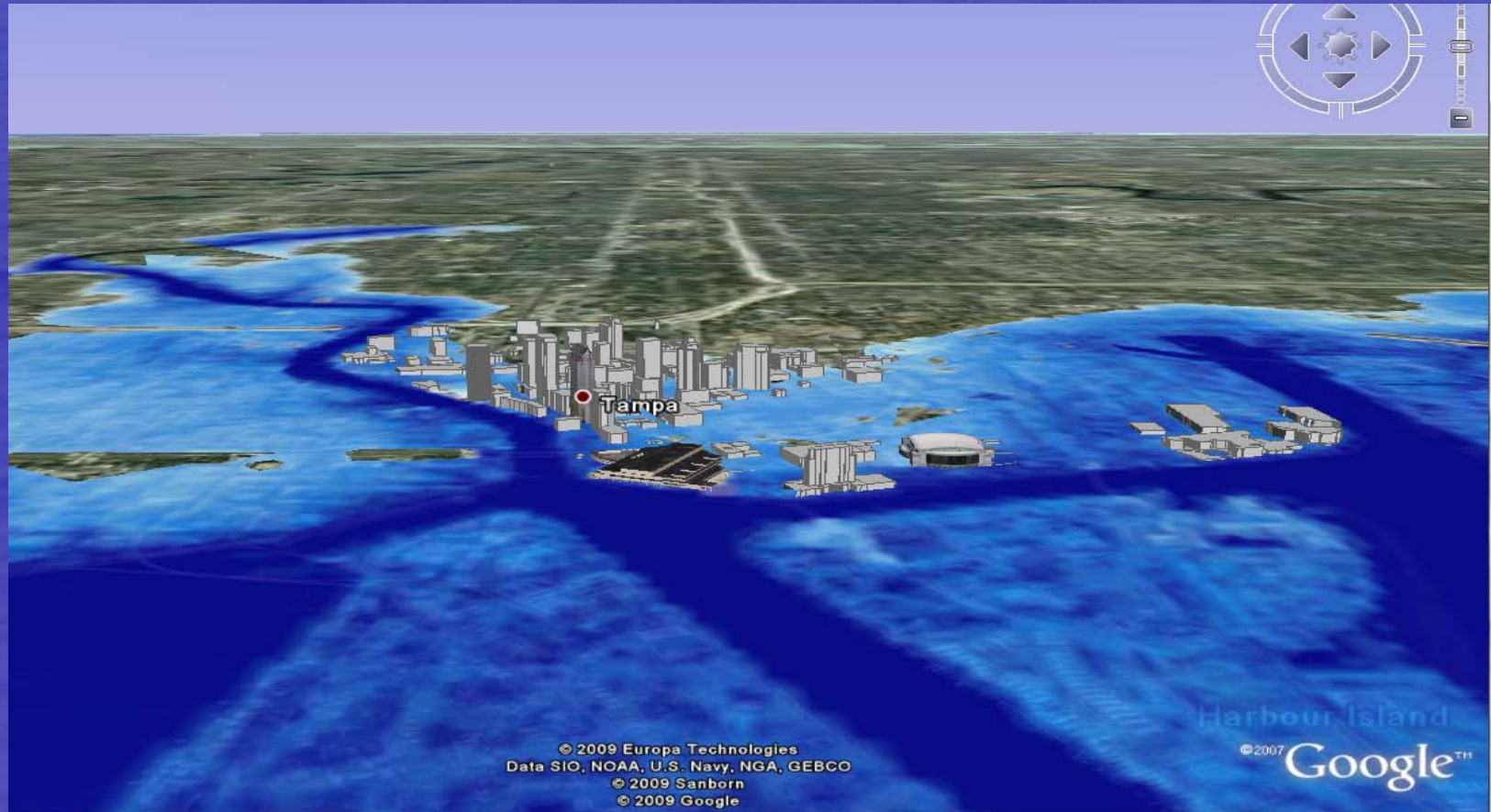
1. Regional Evacuation Study (Hurricane Update)



The Past...



The Future...



The Present...

- Study and Update Regional Hurricane Evacuation in light of new legislation
- Utilize New LIDAR data combined with updated SLOSH modeling
- Utilize Consistent methodology and format to ensure complete transparency
- Expected completion in June 2010



Phase One

- Regional Evacuation Transportation Network Analyses
- Definition of relevant terms Behavioral Analysis
- Demographic and Land Use
- Critical Facilities Inventory
- Shelter Analysis



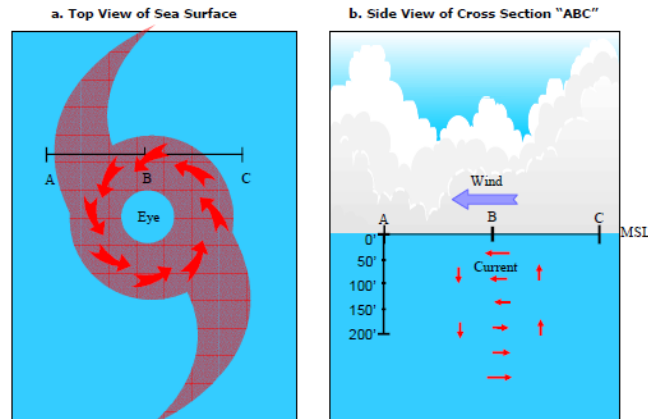
Phase Two

- Vulnerability Analysis consisting of the delineation of the surge and evacuation zones
- Identification of population-at-risk and evacuation populations
- Evacuation Transportation Analysis
- Products include printed documents and digital data, including GIS products

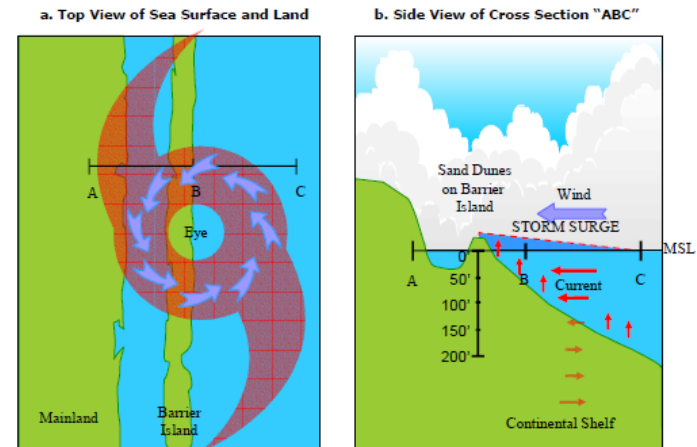


How Surge Builds

Deep Water



Landfall



As the water depth decreases closer to the shore, the excess water that is built up by the central pressure of the storm is not able to dissipate. The increased water has no place to go except up onto the shore. Radius of Maximum Winds can greatly increase surge height.

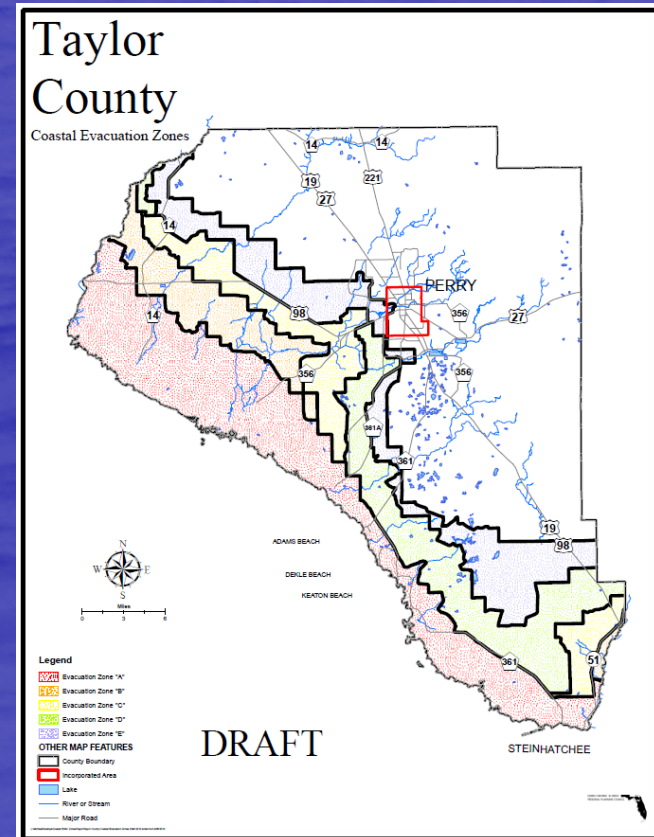
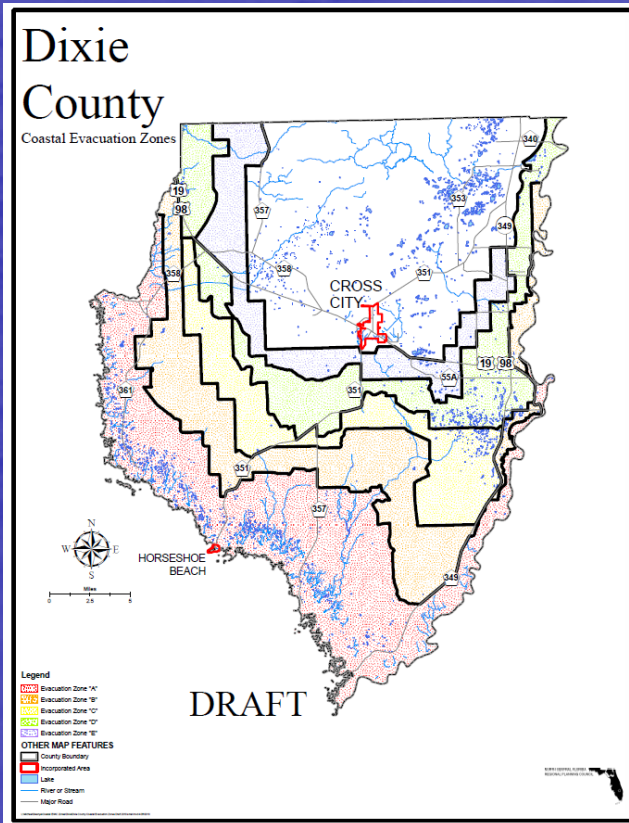


Storm Surge Ranges

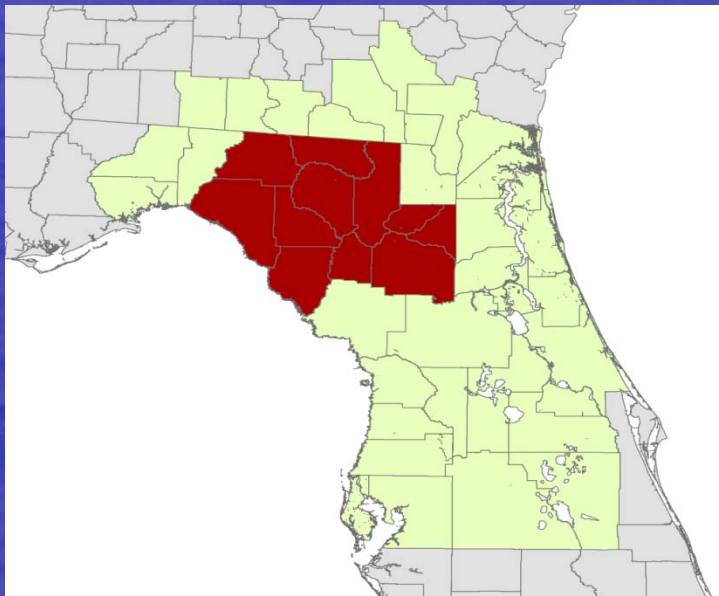
	Cat.	low	high
Dixie	1	5.3	10.6
	2	8.2	17.4
	3	18	23.6
	4	22.6	29.3
	5	26.9	34.2
	Cat.	low	high
Taylor	1	8.9	11.1
	2	15.6	19.5
	3	21.6	27.7
	4	26.9	33.5
	5	31.2	38.5



Evacuation Zone Maps



Next Week...



Transportation Analysis

Once the surge and evacuation zones are established, the evacuation transportation analysis can be completed. The crucial information relies on the shelters, demographics, the evacuation zones, and the established evacuation routes. The transportation analysis derives clearance times from all these variables.



2. Hazardous Waste Compliance



Florida Department of Environmental Protection Enforcement Priority

- Used Oil Storage
- Dry Cleaners



Used Oil Prohibitions



- May not pour or spill used oil onto soil, waterways, storm drains, etc.
- May not mix used oil with solid waste.
- May not use used oil for road oiling or weed control.



Used Oil Management

- Used oil must be managed in tanks or containers that are:
 - **In good condition**



Used Oil Management

- Used oil must be managed in tanks or containers that are:
 - **Not leaking**



Used Oil Management

- Used oil must be managed in tanks or containers that are:
 - Labeled "Used Oil"



Used Oil Management

- Used oil must be managed in tanks or containers that are:
 - Closed or otherwise protected from the weather

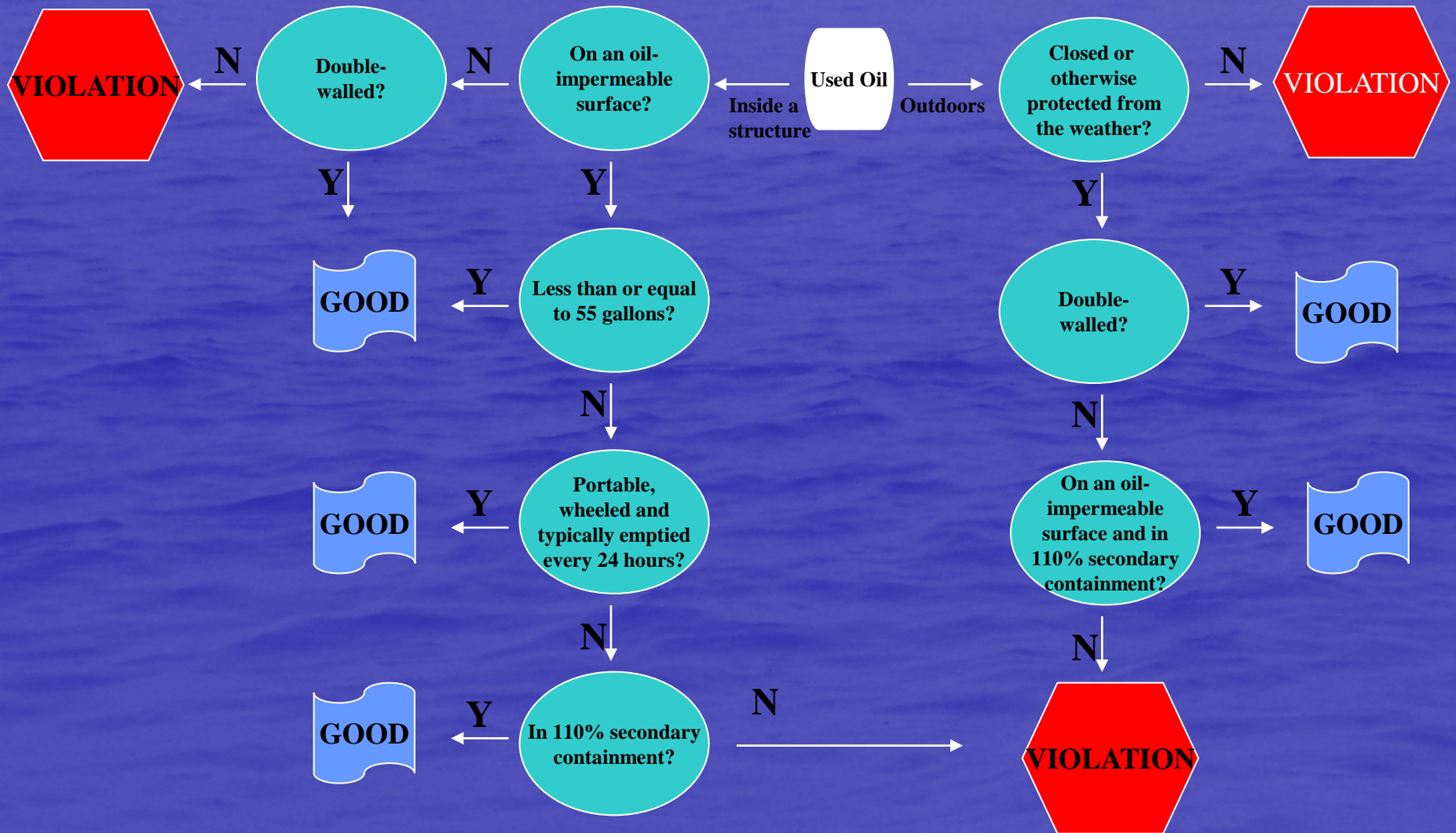


Used Oil Management

- Outdoor tanks or containers must be:
 - **Double-walled *or* on an oil-impermeable surface in 110% secondary containment**



62-710.401(6) Used Oil Guidance Flowchart



"Don't"



"Don't"



"Do"



3. Tactical Interoperable Communications





North Central Florida Regional Planning Council







North Central Florida Regional Planning Council



4. Current Issues in Hazardous Materials Emergency Response



North Central Florida Regional Hazardous Materials Response Team

- No Longer Doing Hazmat Response:
Alachua County, Bradford County,
City of Starke
- Awarded Response Trailer: Suwannee Co.
- Decontamination Trailer: Gilchrist County



Free Hazmat Training for First Responders

- Awareness (4 hr)
- Operations (24 hr)
- Technician (160 hr)
- Incident Commander (Operations +24 hr)
- HazMedic (24 hr)



Oil Spill Clean Up Training

- OSHA HAZWOPER - Hazardous Waste Operations and Emergency Response Site Clean Up (40 hr)
- OSHA Hazmat Technician (24 hr)
- Volunteers (?)

