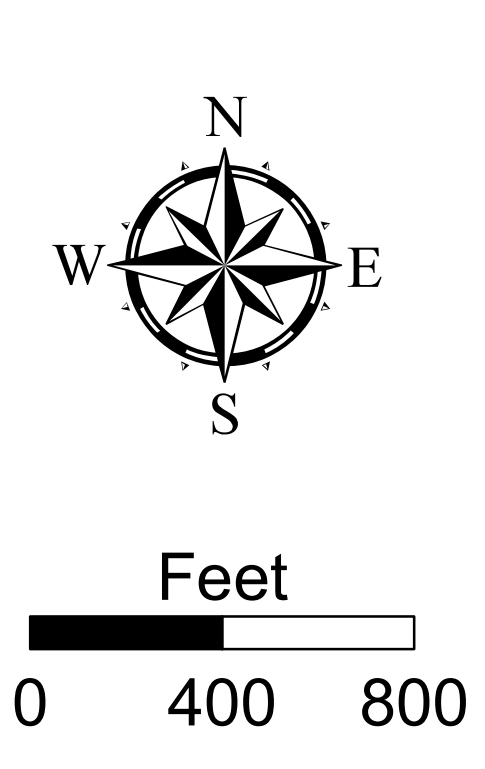
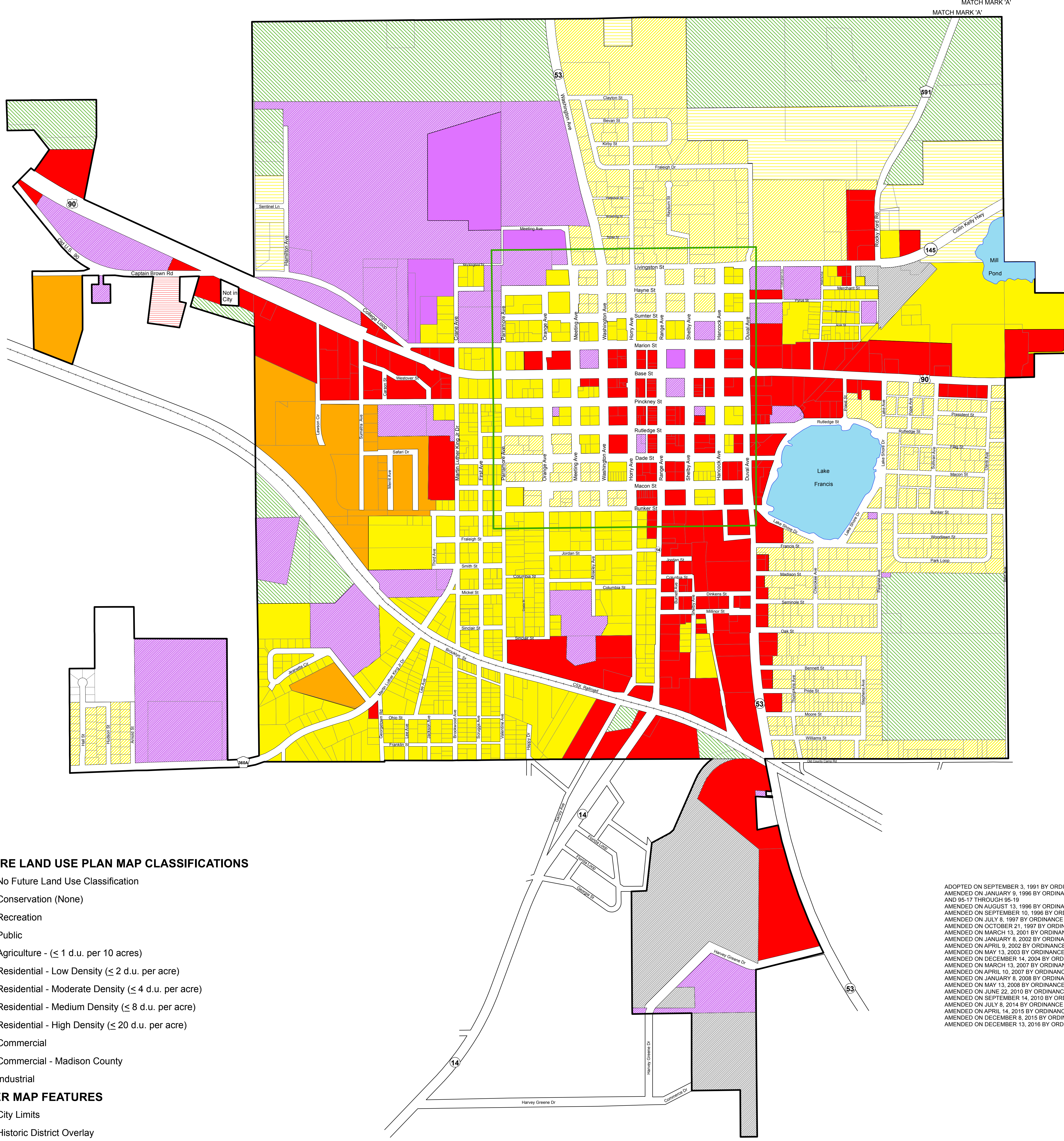
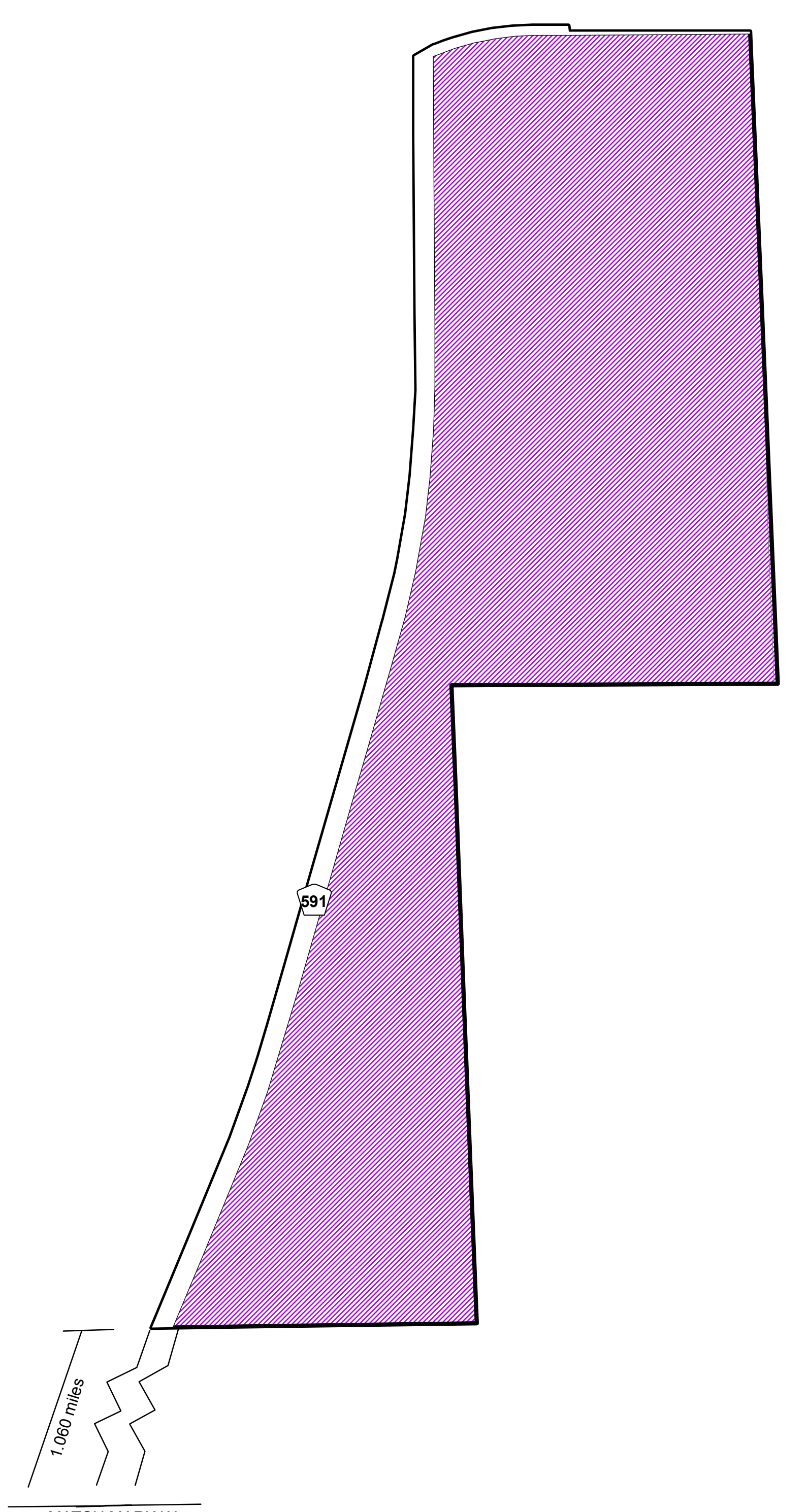


City of Madison

Future Land Use Plan Map 2025



- FUTURE LAND USE PLAN MAP CLASSIFICATIONS**
- No Future Land Use Classification
 - Conservation (None)
 - Recreation
 - Public
 - Agriculture - (≤ 1 d.u. per 10 acres)
 - Residential - Low Density (≤ 2 d.u. per acre)
 - Residential - Moderate Density (≤ 4 d.u. per acre)
 - Residential - Medium Density (≤ 8 d.u. per acre)
 - Residential - High Density (≤ 20 d.u. per acre)
 - Commercial
 - Commercial - Madison County
 - Industrial
- OTHER MAP FEATURES**
- City Limits
 - Historic District Overlay
 - Railroad
 - U.S. Highway
 - State Highway
 - County Road

ADOPTED ON SEPTEMBER 3, 1991 BY ORDINANCE NO. 91-6
 AMENDED ON JANUARY 9, 1996 BY ORDINANCE NOS. 95-7 AND 95-9 THROUGH 95-14
 AND 95-17 THROUGH 95-19
 AMENDED ON AUGUST 13, 1996 BY ORDINANCE NOS. 96-14 AND 96-17 THROUGH 96-24
 AMENDED ON SEPTEMBER 10, 1996 BY ORDINANCE NO. 96-13
 AMENDED ON OCTOBER 21, 1997 BY ORDINANCE NO. 97-4
 AMENDED ON JULY 8, 1997 BY ORDINANCE NO. 97-1
 AMENDED ON MARCH 13, 2001 BY ORDINANCE NO. 2001-2
 AMENDED ON JANUARY 8, 2002 BY ORDINANCE NOS. 2001-10 THROUGH 2001-12
 AMENDED ON APRIL 9, 2002 BY ORDINANCE NO. 2002-3
 AMENDED ON MAY 13, 2003 BY ORDINANCE NOS. 2003-5 THROUGH 2003-7
 AMENDED ON JANUARY 8, 2008 BY ORDINANCE NOS. 2007-11 THROUGH 2007-13
 AMENDED ON MARCH 13, 2007 BY ORDINANCE NOS. 2006-8 AND 2006-9
 AMENDED ON APRIL 10, 2007 BY ORDINANCE NO. 2006-6
 AMENDED ON JANUARY 8, 2008 BY ORDINANCE NOS. 2007-11 THROUGH 2007-13
 AMENDED ON MAY 13, 2008 BY ORDINANCE NO. 2007-10
 AMENDED ON JUNE 22, 2010 BY ORDINANCE NOS. 2010-7 THROUGH 2010-11
 AMENDED ON SEPTEMBER 14, 2010 BY ORDINANCE NO. 2010-12
 AMENDED ON JULY 8, 2014 BY ORDINANCE NO. 2014-2
 AMENDED ON APRIL 14, 2015 BY ORDINANCE NO. 2015-2
 AMENDED ON DECEMBER 8, 2015 BY ORDINANCE NO. 2015-5
 AMENDED ON DECEMBER 13, 2016 BY ORDINANCE NOS. 2016-7 THROUGH 2016-27



Source: County Property Appraiser, 2016.
 W:\FLUM_ZN\Madison\City_of_Madison\MADFU20.mxd