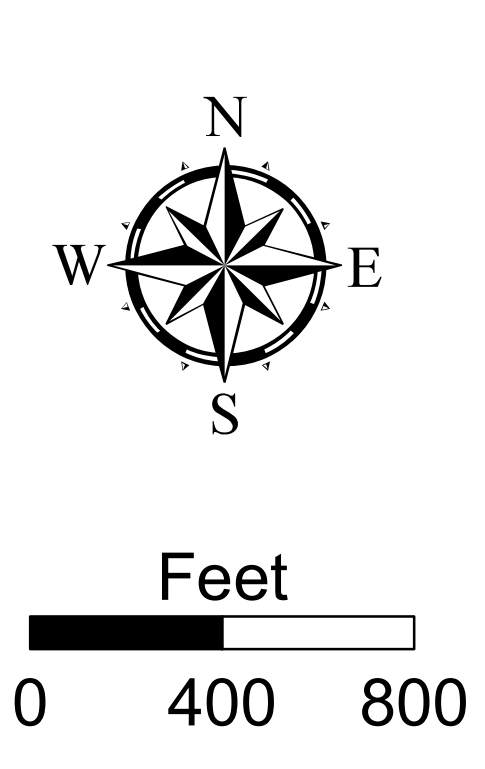
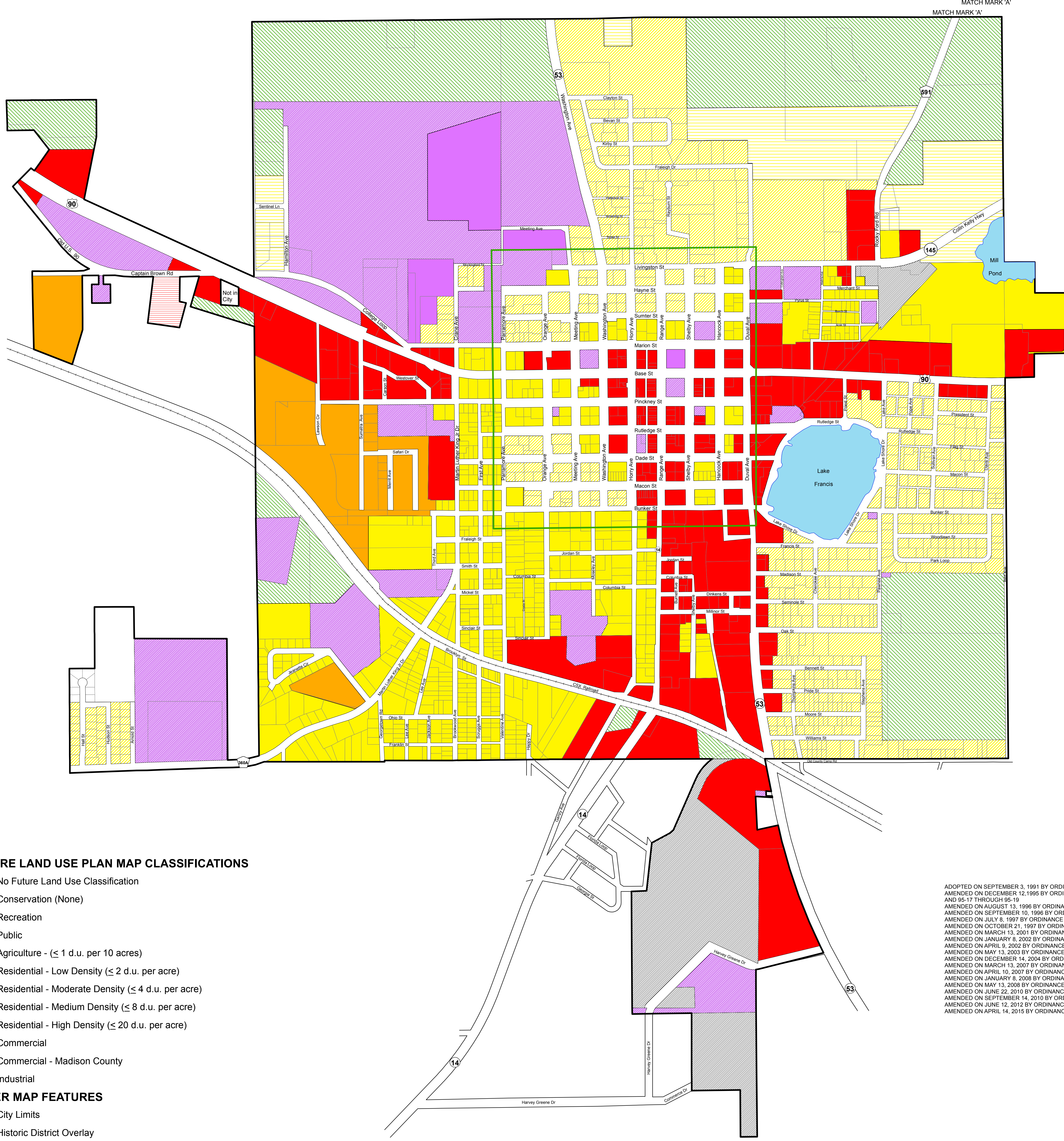
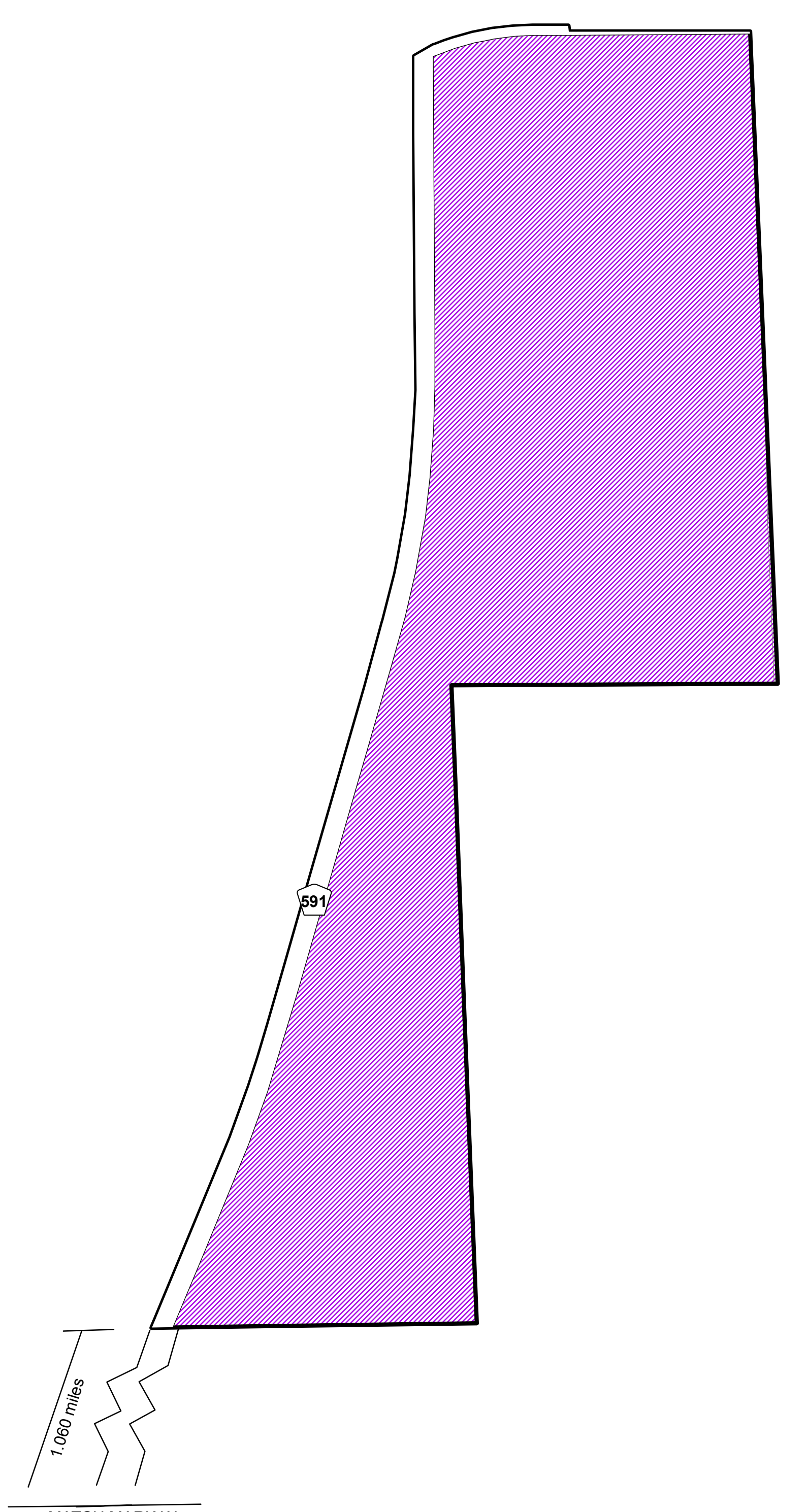


City of Madison

Future Land Use Plan Map 2017



FUTURE LAND USE PLAN MAP CLASSIFICATIONS

- No Future Land Use Classification
- Conservation (None)
- Recreation
- Public
- Agriculture - (≤ 1 d.u. per 10 acres)
- Residential - Low Density (≤ 2 d.u. per acre)
- Residential - Moderate Density (≤ 4 d.u. per acre)
- Residential - Medium Density (≤ 8 d.u. per acre)
- Residential - High Density (≤ 20 d.u. per acre)
- Commercial
- Commercial - Madison County
- Industrial

OTHER MAP FEATURES

- City Limits
- Historic District Overlay
- Railroad
- U.S. Highway
- State Highway
- County Road

ADOPTED ON SEPTEMBER 3, 1991 BY ORDINANCE NO. 91-6
 AMENDED ON DECEMBER 12, 1995 BY ORDINANCE NOS. 95-7 AND 95-9 THROUGH 95-14
 AND 95-17 THROUGH 95-19
 AMENDED ON AUGUST 13, 1996 BY ORDINANCE NOS. 96-14 AND 96-17 THROUGH 96-24
 AMENDED ON SEPTEMBER 10, 1996 BY ORDINANCE NO. 96-13
 AMENDED ON OCTOBER 21, 1997 BY ORDINANCE NO. 97-4
 AMENDED ON JULY 8, 1997 BY ORDINANCE NO. 97-1
 AMENDED ON MARCH 13, 2001 BY ORDINANCE NO. 01-2
 AMENDED ON JANUARY 8, 2002 BY ORDINANCE NOS. 01-10 THROUGH 01-12
 AMENDED ON APRIL 9, 2002 BY ORDINANCE NO. 02-3
 AMENDED ON MAY 13, 2003 BY ORDINANCE NOS. 03-5 THROUGH 03-7
 AMENDED ON DECEMBER 14, 2004 BY ORDINANCE NO. 04-4
 AMENDED ON MARCH 13, 2007 BY ORDINANCE NOS. 06-8 AND 06-9
 AMENDED ON APRIL 10, 2007 BY ORDINANCE NO. 06-6
 AMENDED ON JANUARY 8, 2008 BY ORDINANCE NOS. 07-11, 07-12 AND 07-13
 AMENDED ON MAY 13, 2008 BY ORDINANCE NO. 07-10
 AMENDED ON JUNE 22, 2010 BY ORDINANCE NOS. 10-7 THROUGH 10-11
 AMENDED ON SEPTEMBER 14, 2010 BY ORDINANCE NO. 10-12
 AMENDED ON JUNE 12, 2012 BY ORDINANCE NO. 12-02
 AMENDED ON APRIL 14, 2015 BY ORDINANCE NO. 15-02

Source: County Property Appraiser, 2014.
 W:\FLUM_ZN\Madison\City_of_Madison\MADFU19.mxd

