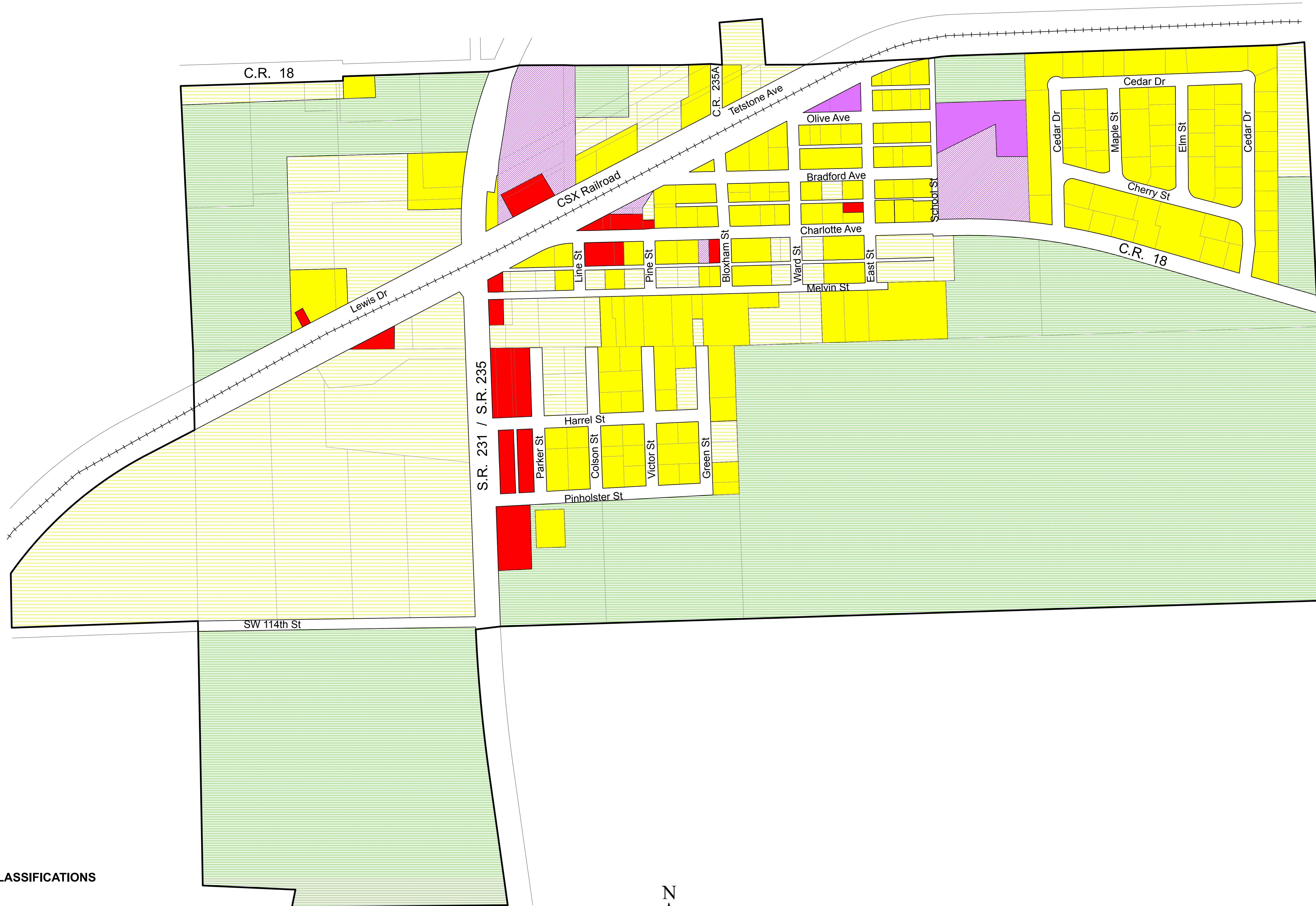


# Town of Brooker

Future Land Use Plan Map 2010



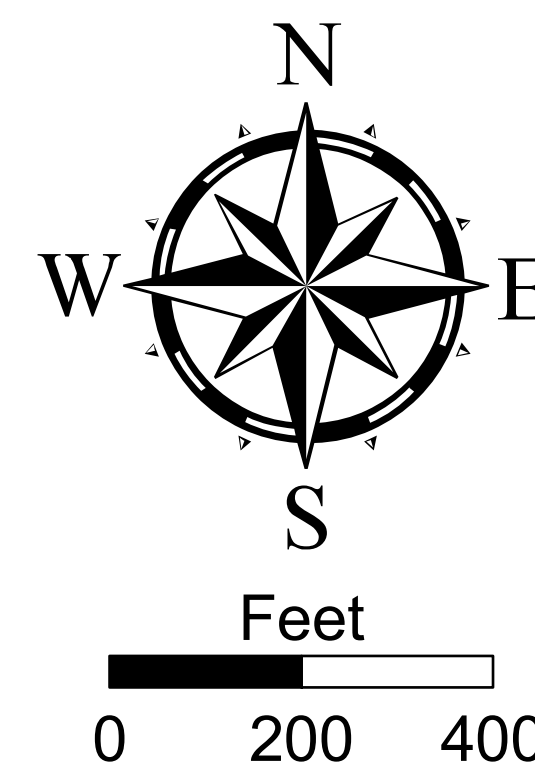
**FUTURE LAND USE PLAN MAP CLASSIFICATIONS**

- Conservation (None)
- Recreation
- Public
- Agriculture ( ≤ 1 d.u. per 3 acres)
- Residential - Low Density ( ≤ 2 d.u. per acre)
- Residential Low Density - ( ≤ 2 d.u. per acre) (Bradford County)\*\*
- Residential Medium Density ( > than 2 d.u. per acre but ≤ 8 d.u. per acre)
- Residential High Density ( > than 8 d.u. per acre but ≤ 20 d.u. per acre) (None)
- Commercial
- Industrial (None)

**OTHER MAP FEATURES**

- Town Limits
- Railroad

\*\* 2 Units/acre unless served by central water and sewer which will permit up to 20 units per acre.



ADOPTED ON MARCH 17, 1992 BY ORDINANCE NO. 92-01  
 AMENDED ON MAY 11, 1993 BY ORDINANCE NO. 93-01  
 AMENDED ON FEBRUARY 14, 1995 BY ORDINANCE NO. 95-01  
 AMENDED ON JULY 18, 1995 BY ORDINANCE NO. 95-02  
 AMENDED ON MAY 13, 1997 BY ORDINANCE NO. 97-01  
 AMENDED ON NOVEMBER 11, 1997 BY ORDINANCE NO. 97-03  
 AMENDED ON MARCH 12, 2002 BY ORDINANCE NO. 02-01  
 AMENDED ON SEPTEMBER 11, 2007 BY ORDINANCE NO. 07-02  
 AMENDED ON JUNE 15, 2010 BY ORDINANCE NO. 10-03  
 AMENDED ON JULY 20, 2010 BY ORDINANCE NO. 10-02  
 AMENDED ON AUGUST 17, 2010 BY ORDINANCE NO. 10-01  
 AMENDED ON JANUARY 18, 2011 BY ORDINANCE NO. 10-10

