



Serving Alachua
Bradford • Columbia
Dixie • Gilchrist • Hamilton
Lafayette • Levy • Madison
Suwannee • Taylor • Union Counties

2009 NW 67th Place, Gainesville, FL 32653-1603 • 352.955.2200

MEETING NOTICE

REGIONAL PLANNING COMMITTEE

There will be a meeting of the Regional Planning Committee of the North Central Florida Regional Planning Council on **May 24, 2018**. The meeting will be held at the **Holiday Inn Hotel & Suites, 213 SW Commerce Boulevard, Lake City**, beginning at **5:30 p.m.**

(Location Map on Back)

Holiday Inn Hotel & Suites

213 SW Commerce Blvd
Lake City, Florida 32025

Directions: From the intersection of Interstate 75 and U.S. Highway 90 (exit 427) in the City of Lake City turn, East onto U.S. Highway 90, travel approximately 450 feet to SW Commerce Blvd, turn right (South) onto SW Commerce Blvd, travel approximately 720 feet and the Holiday Inn Hotel & Suites is on the left.



1 inch = 500 feet

Holiday Inn
Hotel & Suites





**North
Central
Florida
Regional
Planning
Council**

Serving Alachua
Bradford • Columbia
Dixie • Gilchrist • Hamilton
Lafayette • Levy • Madison
Suwannee • Taylor • Union Counties

2009 NW 67th Place, Gainesville, FL 32653-1603 • 352.955.2200

AGENDA

REGIONAL PLANNING COMMITTEE

Holiday Inn Hotel & Suites
Lake City, Florida

May 24, 2018
5:30 p.m.

PAGE NO.

- | | | | |
|---|------|---|----------|
| * | I. | APPROVAL OF THE MARCH 22, 2018 MEETING MINUTES | 5 |
| | II. | REVIEW OF ADDITIONAL LOCAL GOVERNMENT CONSERVATION LANDS OF 100 ACRES OR MORE IN SIZE | 7 |
| | III. | REVIEW OF REGIONAL ECOLOGICAL GREENWAYS NETWORK NATURAL RESOURCE OF REGIONAL SIGNIFICANCE MAP | 9 |

Please be advised that the Proposed Evaluation and Appraisal Reported-Based Amendments to the North Central Florida Strategic Regional Policy Plan are posted on the Council website at http://ncfrpc.org/Publications/SRPP/2017/Draft2017SRPP_10-26-17.pdf

v:\srpp\committe\meeting\agenda.180524.rpc.docx

Dedicated to improving the quality of life of the Region's citizens,
by coordinating growth management, protecting regional resources,
promoting economic development and providing technical services to local governments.

NORTH CENTRAL FLORIDA REGIONAL PLANNING COUNCIL

REGIONAL PLANNING COMMITTEE

MINUTES

Holiday Inn Hotel & Suites
Lake City, Florida

March 22, 2018
5:30 p.m.

MEMBERS PRESENT

Anthony Adams
Charles Chestnut, IV
Thomas Demps
Fletcher Hope
William Hunter
Helen Warren, Chair

MEMBERS ABSENT

Mike Deming
James Montgomery
Tim Murphy, Vice-Chair

STAFF PRESENT

Steven Dopp
Scott Koons

OTHERS PRESENT

Steven Hofstetter, Alachua County
Environmental Protection
Department

The meeting was called to order by Chair Warren at 5:40 p.m.

I. APPROVAL OF THE MARCH 22, 2018 MEETING AGENDA

ACTION: It was moved by Commissioner Hope and seconded by Commissioner Demps approve the March 22, 2018 meeting agenda as circulated. The motion carried unanimously.

II. APPROVAL OF THE OCTOBER 26, 2017 MEETING MINUTES

ACTION: It was moved by Commissioner Chesnut and seconded by Commissioner Hope to approve the October 26, 2017 Committee meeting minutes as circulated. The motion carried unanimously.

III. MARCH 13, 2018 AND MARCH 15, 2018 RULE DEVELOPMENT WORKSHOPS

Mr. Dopp reported on the March 13, 2018 and March 15, 2018 rule development workshops held in Bronson, Florida and Gainesville, Florida. Mr. Dopp stated that the workshops were to inform the public of the proposed amendments to the regional plan and to gather public comments. Mr. Dopp stated that the Council has also distributed a memorandum to state agencies, regional agencies and local governments requesting comments on the proposed amendments be received no later than April 16, 2018. Mr. Dopp noted that comments have been received from the Levy County Planner and the Alachua County Growth Management Department which identify editorial changes. In addition, Mr. Dopp noted that the Alachua County Growth Management Department recommended additional text be added to the Affordable Housing Element Conditions and Trends Statement.

The Committee agreed by consensus to the recommended changes received by the Council from the Levy County Planner and the Alachua County Growth Management Department.

IV. CONSIDERATION OF ALACHUA COUNTY BOARD OF COUNTY COMMISSIONERS REQUEST FOR AMENDMENTS TO THE REGIONAL ECOLOGICAL GREENWAY NETWORK NATURAL RESOURCES OF REGIONAL SIGNIFICANCE MAP

Mr. Dopp reported that the Alachua County Board of County Commissioners has requested that all lands classified as Priority 3 within the Florida Ecological Greenway Network, at least within Alachua County, be added to the Regional Ecological Greenway map.

Mr. Dopp reported that staff recommends that the Committee replace the currently proposed Regional Ecological Greenway Map with a map of Priority Levels 1 and 2 contained in the 2016 Regional Ecological Greenway Map. He further noted that staff recommends that Priority Level 3 areas not be included in the Florida Ecological Greenway map as such areas are considered to be alternate routes to the primary greenway network (Priority Levels 1 and 2) should the primary greenway network fail. Mr. Dopp further advised that staff recommends, should the Committee include Priority Level 3 areas as part of the Regional Ecological Greenway, the Committee include all such designated areas within the region and not just Priority Level 3 areas located within Alachua County. He stated that all Priority Level 3 areas within the region need to be addressed in the same manner.

Steven Hofstetter of the Alachua County Environmental Protection Department requested that the Priority Level 3 areas be added to the Regional Ecological Greenway Network Map. He stated that no Priority 1 and 2 levels are located within the County and that the County desires to protect the Priority Level 3 area should the primary corridor located to the east of the County fail. He stated that the designation may assist the County in obtaining grants to acquire the Priority Level 3 property within Alachua County.

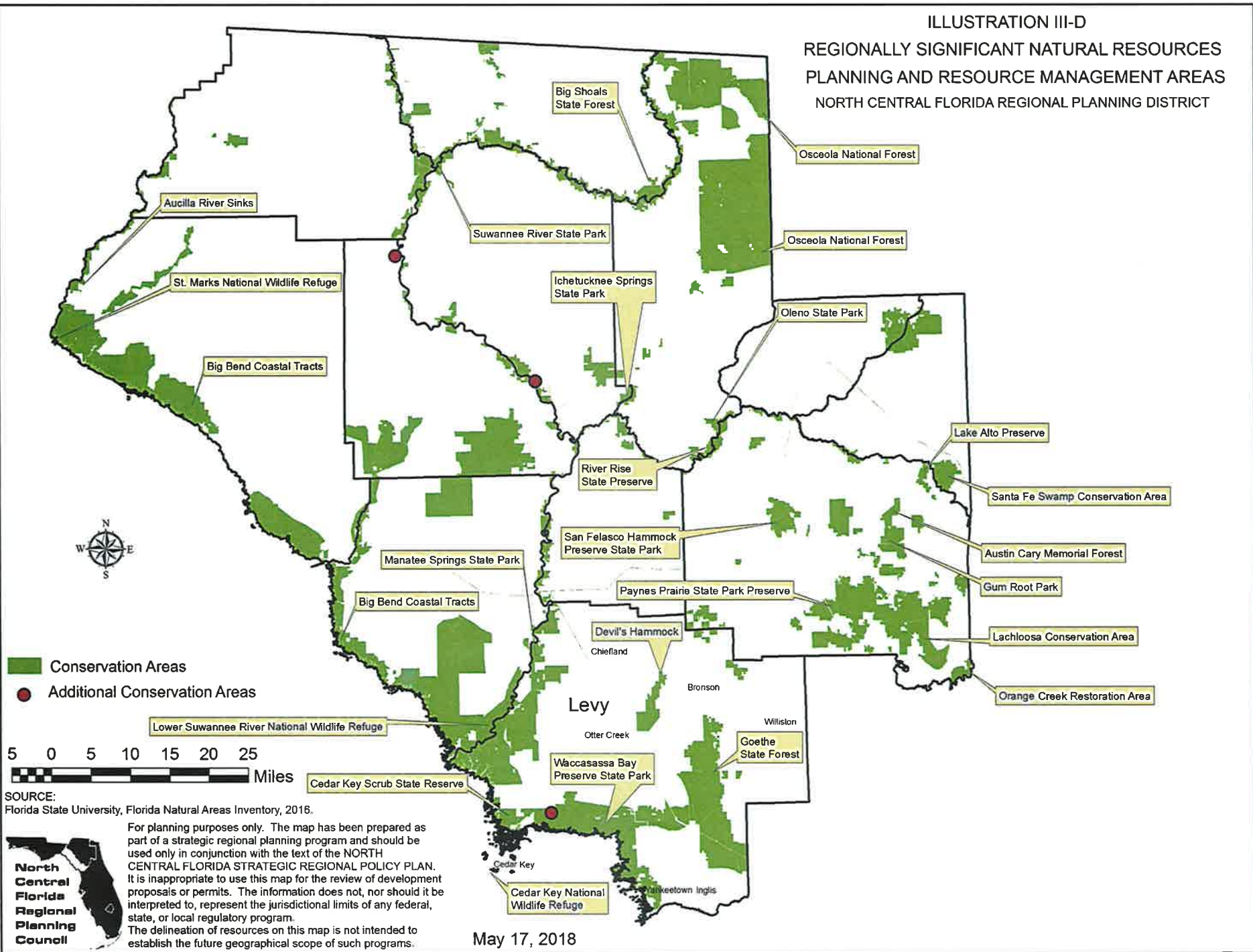
ACTION: It was moved by Commissioner Chesnut and seconded by Commissioner Hope to replace the proposed Regional Ecological Greenway Map with Priority Levels 1 and 2 from the 2016 Florida Ecological Greenway Map for all such areas designated within the region and to add Priority Level 3 areas located within Alachua County. The motion carried with five ayes (Adams, Chesnut, Demps, Hope and Warren) and one nay (Hunter).

The meeting adjourned at 6:25 p.m.

Helen Warren, Chair

Date

ILLUSTRATION III-D
 REGIONALLY SIGNIFICANT NATURAL RESOURCES
 PLANNING AND RESOURCE MANAGEMENT AREAS
 NORTH CENTRAL FLORIDA REGIONAL PLANNING DISTRICT



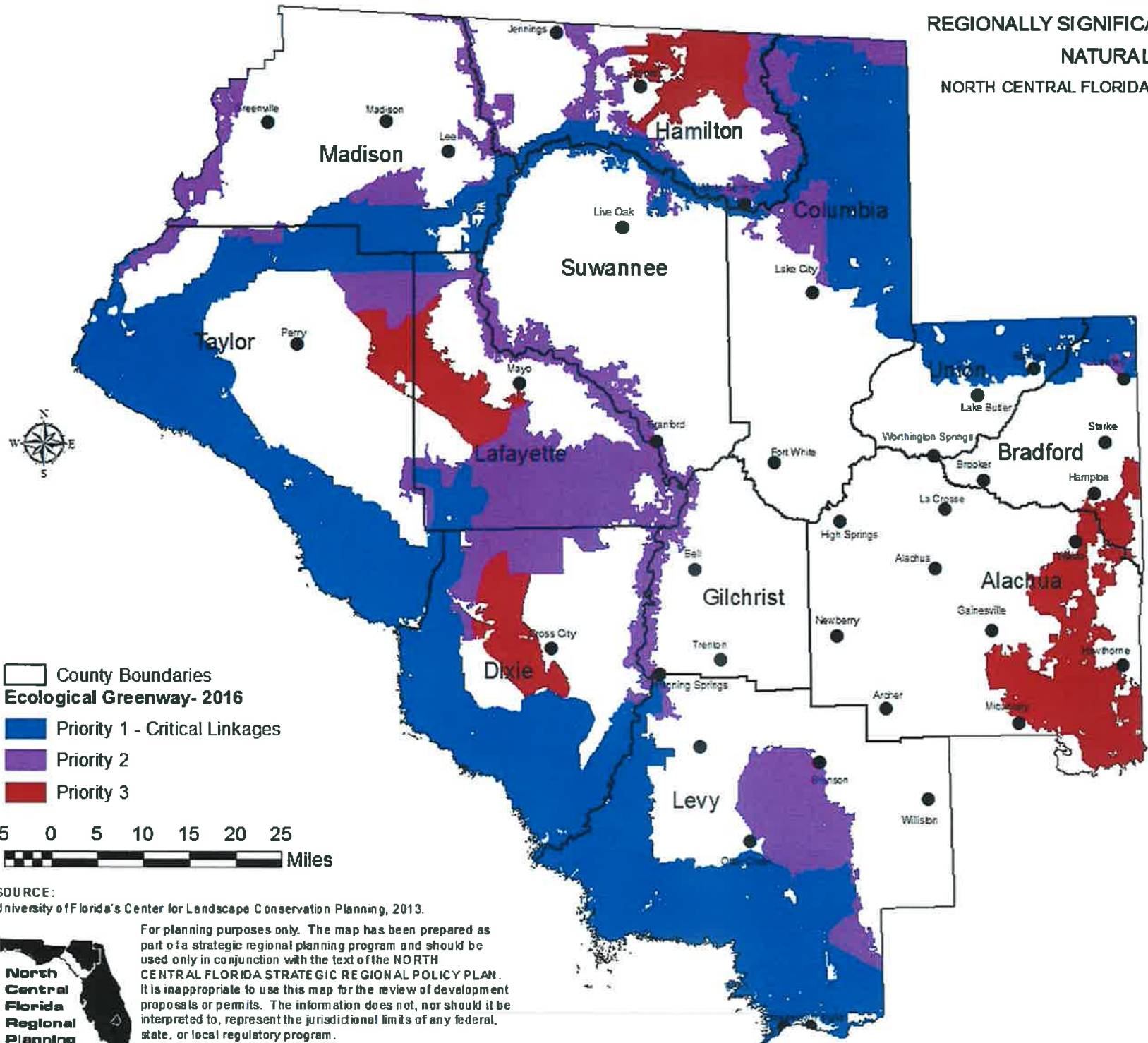
SOURCE:
 Florida State University, Florida Natural Areas Inventory, 2016.

For planning purposes only. The map has been prepared as part of a strategic regional planning program and should be used only in conjunction with the text of the NORTH CENTRAL FLORIDA STRATEGIC REGIONAL POLICY PLAN. It is inappropriate to use this map for the review of development proposals or permits. The information does not, nor should it be interpreted to, represent the jurisdictional limits of any federal, state, or local regulatory program. The delineation of resources on this map is not intended to establish the future geographical scope of such programs.



May 17, 2018

ILLUSTRATION III-C
 REGIONALLY SIGNIFICANT NATURAL RESOURCES
 NATURAL SYSTEMS
 NORTH CENTRAL FLORIDA REGIONAL PLANNING DISTRICT



- County Boundaries
- Ecological Greenway-2016**
- Priority 1 - Critical Linkages
- Priority 2
- Priority 3



SOURCE:
 University of Florida's Center for Landscape Conservation Planning, 2013.



For planning purposes only. The map has been prepared as part of a strategic regional planning program and should be used only in conjunction with the text of the NORTH CENTRAL FLORIDA STRATEGIC REGIONAL POLICY PLAN. It is inappropriate to use this map for the review of development proposals or permits. The information does not, nor should it be interpreted to, represent the jurisdictional limits of any federal, state, or local regulatory program. The delineation of resources on this map is not intended to establish the future geographical scope of such programs.

December 14, 2017