



Florida Department of Environmental Protection

Basin Management Action Plans (BMAP)

Terry Hansen P.G., PG Administrator

850-245-8561

terry.hansen@dep.state.fl.us





Water Quality Framework

Monitor and report progress annually

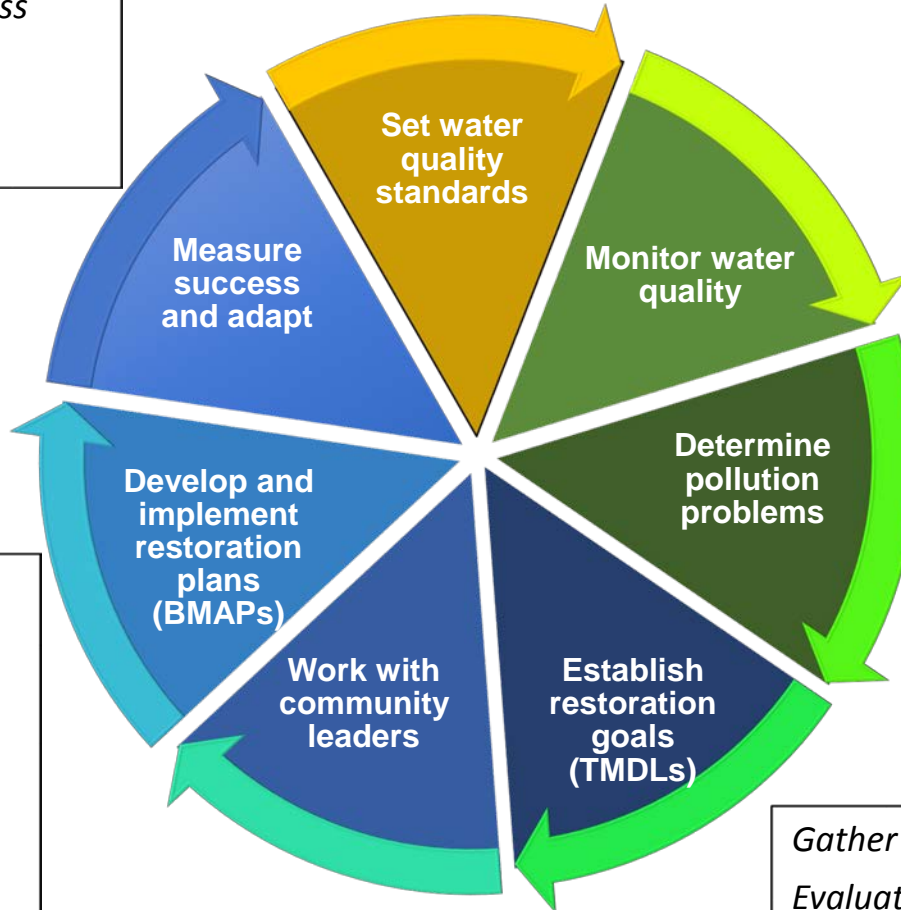
Adapt and change – new statewide annual report

Collect data

Analyze and verify

List “impaired” waters

REPEAT



Allocate responsibilities

Identify projects

- Infrastructure
- Best Management Practices (BMPs)

Establish schedules

Identify success criteria

Monitor water quality

Determine pollution problems

Establish restoration goals (TMDLs)

Work with community leaders

Develop and implement restoration plans (BMAPs)

Set water quality standards

Measure success and adapt

Excessive nutrients

Bacteria, Metals, and Other Impairments

Gather additional data

Evaluate water quality

Adopt pollutant reduction targets



Suwannee River Basin Regional Setting

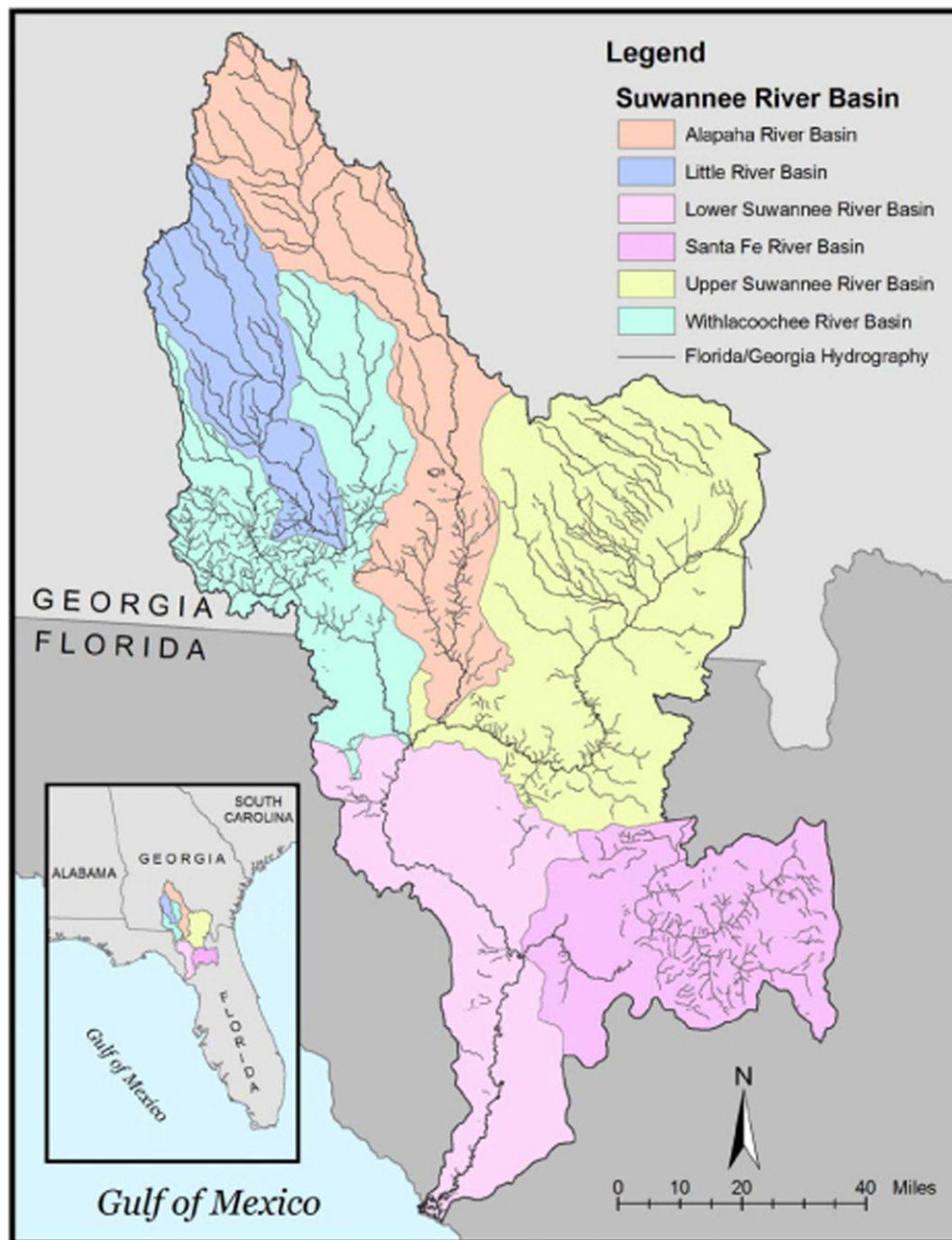


Figure 1-1. Basins of the Suwannee River System (Hornsby and Raulston, 2000).



Regulatory Framework

The process for preparing BMAPs is found in:

- Section 403.067, Florida Statutes (F.S.), known as the “Florida Watershed Restoration Act”
- The 2016 Florida Springs and Aquifer Protection Act lists requirements for BMAPs for OFS
- Requirement is to achieve TMDL in 20 years
 - Plan is to achieve:
 - 30 % reduction in 5 years
 - 80 % in 10 years
 - 100 % in 15 years





Suwannee River BMAP Area

Withlacoochee River:

OFS* – Madison Blue

Middle Suwannee River:

OFS* – Falmouth, Lafayette Blue, Peacock, and Troy

Lower Suwannee River:

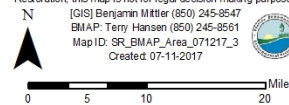
OFS* – Fanning and Manatee

*OFS = Outstanding Florida Spring



Suwannee River BMAP Area

Map prepared by the Division of Environmental Assessment and Restoration, this map is not for legal decision making purposes.
[GIS] Benjamin Mittler (850) 245-8547
BMAP: Terry Hansen (850) 245-8561
Map ID: SR_BMAP_Area_071217_3
Created: 07-11-2017



- Springs
- Springsheds
- Stream River
- Waterbodies
- Florida Counties
- PFAs
- Cities
- Interstate
- Suwannee River BMAP

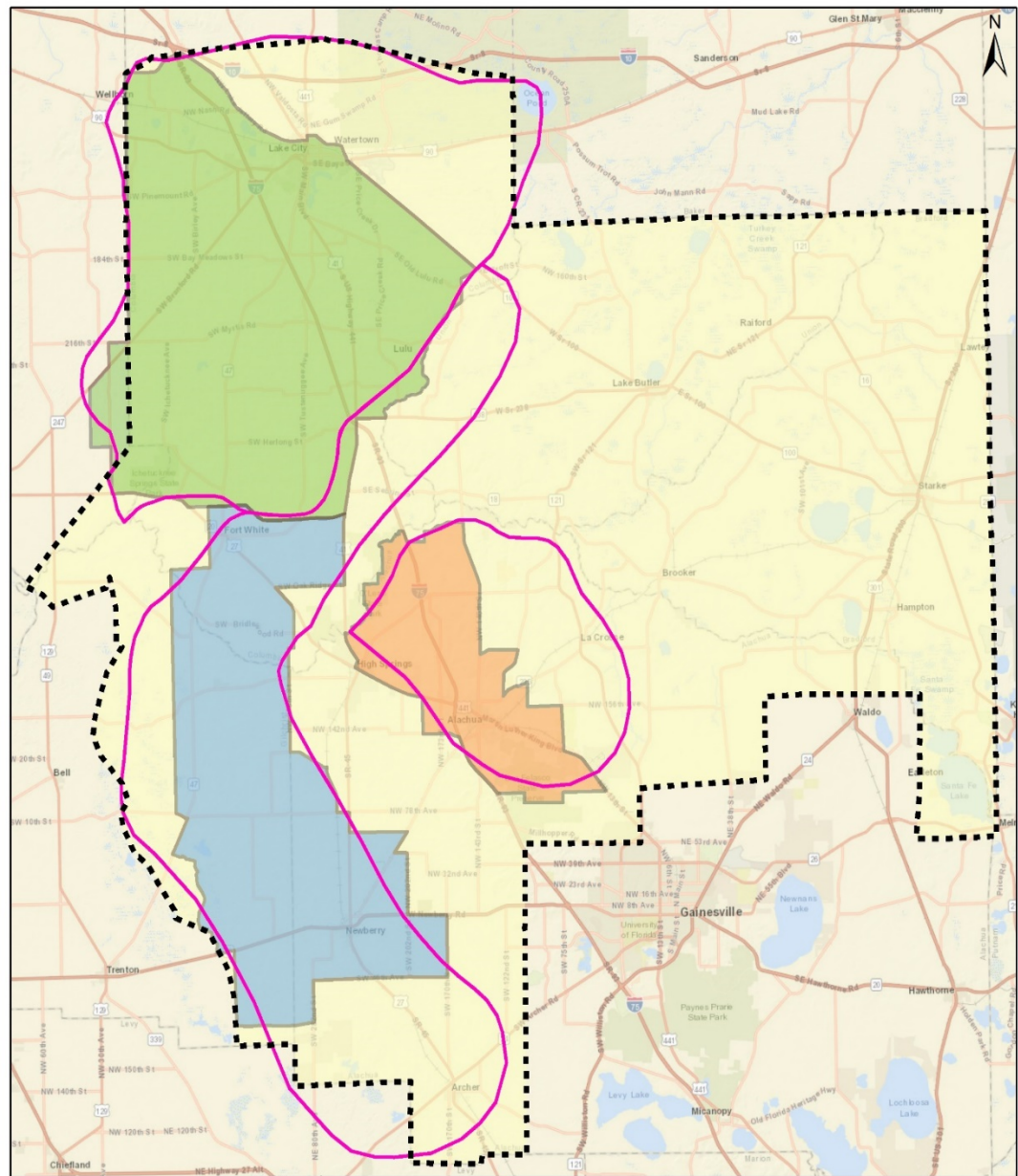




Santa Fe River BMAP Area

OFS* – Ichetucknee, Hornsby, Treehouse, Columbia, & Devils Complex

*OFS = Outstanding Florida Spring



Santa Fe River Basin PFA and Springsheds

Map prepared by the Division of Environmental Assessment and Restoration. This map is not for legal decision making purposes.
GIS/Andrew Morris (850) 245-8428
BMAP/ Terry Hansen (850) 245-8561
Map ID: Santa Fe BMAP PFA Springsheds
Created: 06-11-2018



Santa Fe BMAP Area



Springsheds



Devils Complex PFA



Hornsby PFA



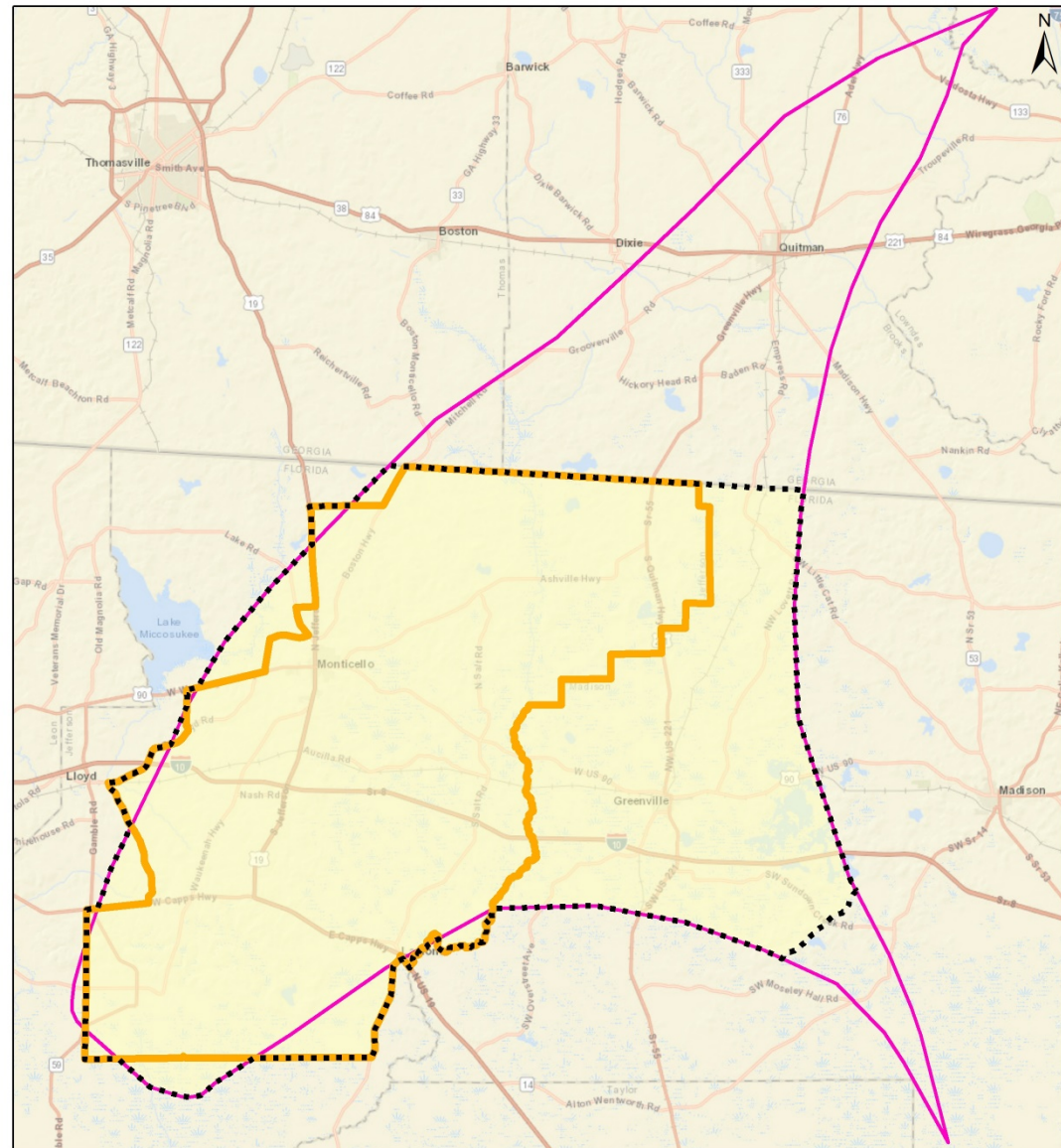
Ichetucknee PFA





Wacissa BMAP Area

OFS* – Wacissa



*OFS = Outstanding Florida Spring

<p>Wacissa River Basin PFA</p>	<ul style="list-style-type: none">  Wacissa BMAP Area  Wacissa Springshed  Wacissa PFA 	 <p>0 100 200 Miles</p>
<p>Map prepared by the Division of Environmental Assessment and Restoration. This map is not for legal decision making purposes. [GIS] Andrew Morris (850) 245-8426 [BMAP] Terry Hansen (850) 245-8561 Map ID: Wacissa BMAP PFA Created: 06-11-2018</p> <p>0 1.25 2.5 5 Miles</p> 		