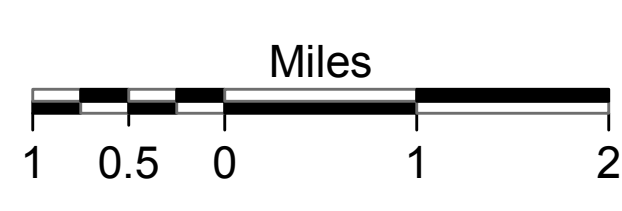
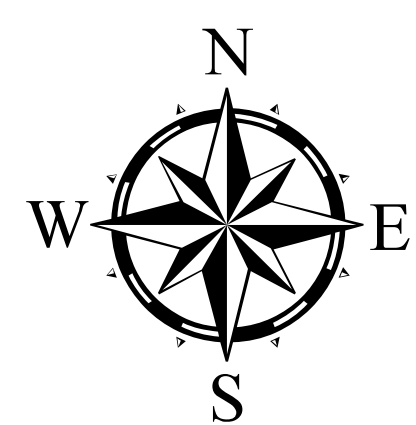
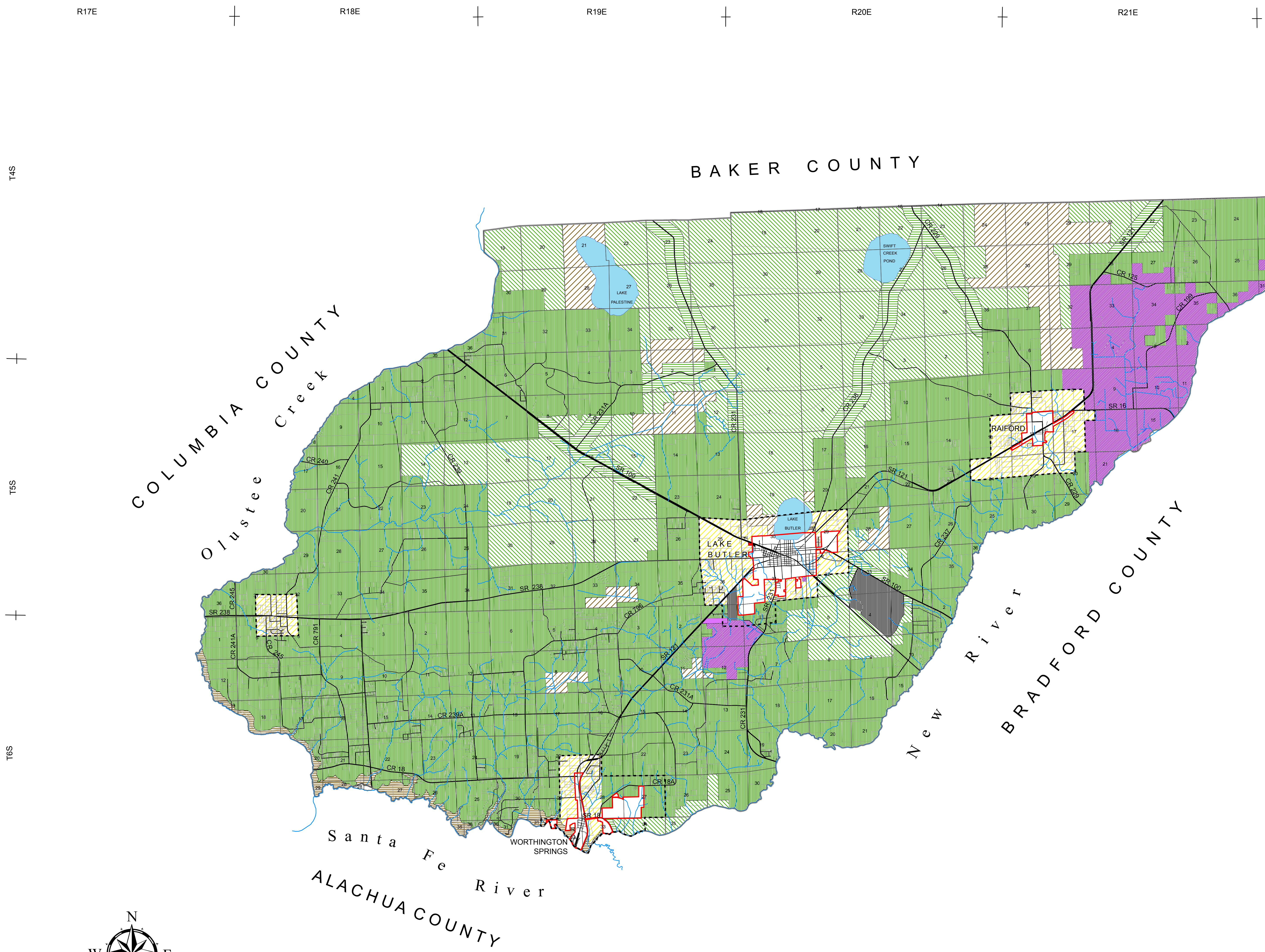


# Union County

Future Land Use Plan Map 2027



**FUTURE LAND USE PLAN MAP CLASSIFICATIONS**

- Recreation
- Public
- Environmentally Sensitive Areas - 1 (≤ 1 d.u. per 40 acres)
- Environmentally Sensitive Areas - 2 (≤ 1 d.u. per 10 acres) none
- Environmentally Sensitive Areas - 3 (≤ 1 d.u. per 5 acres)
- Agriculture - 1 (≤ 1 d.u. per 40 acres) (none)
- Agriculture - 2 (≤ 1 d.u. per 20 acres)
- Agriculture - 3 (≤ 1 d.u. per 10 acres)
- Agriculture - 4 (≤ 1 d.u. per 5 acres except as provided in Policy 1.2.2)
- Residential - Low Density (≤ 2 d.u. per acre)
- Residential - Moderate Density (≤ 4 d.u. per acre) none
- Residential - Medium Density (≤ 8 d.u. per acre) none
- Residential - High Density (≤ 20 d.u. per acre) none
- Commercial (none)
- Industrial

**OTHER MAP FEATURES**

- County Boundary Line
- Incorporated Area
- Designated Urban Development Area
- Lake
- River or Stream

ADOPTED ON DECEMBER 3, 1991 BY ORDINANCE NO. 91-7  
 AMENDED ON JULY 19, 1993 BY ORDINANCE NO. 93-6  
 AMENDED ON DECEMBER 23, 1993 BY ORDINANCE NO. 93-7  
 AMENDED ON NOVEMBER 14, 1995 BY ORDINANCE NO. 95-8  
 AMENDED ON DECEMBER 18, 1995 BY ORDINANCE NO. 95-10  
 AMENDED ON FEBRUARY 19, 1996 BY ORDINANCE NO. 96-01  
 AMENDED ON MARCH 22, 1996 BY ORDINANCE NO. 96-4  
 AMENDED ON AUGUST 19, 1996 BY ORDINANCE NO. 96-13  
 AMENDED ON MARCH 3, 1997 BY ORDINANCE NO. 97-1  
 AMENDED ON OCTOBER 15, 2001 BY ORDINANCE NO. 01-004  
 AMENDED ON OCTOBER 16, 2006 BY ORDINANCE NO. 06-03  
 AMENDED ON MARCH 16, 2009 BY ORDINANCE NO. 09-03  
 AMENDED ON JUNE 26, 2014 BY ORDINANCE NO. 14-02  
 AMENDED DECEMBER 18, 2017 BY ORDINANCE NO. 2017-01

Note: Land use classifications of 10 acres or less in size are not shown on the Future Land Use Plan Map due to the scale of the map. Please refer to Appendix "A" of the County's Comprehensive Plan and amendment ordinances for legal description of properties 10 acres or less in size and the corresponding land use classifications for these properties.

