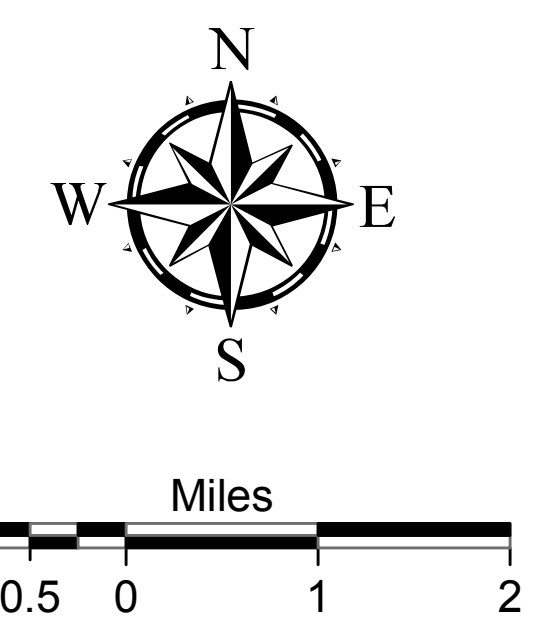
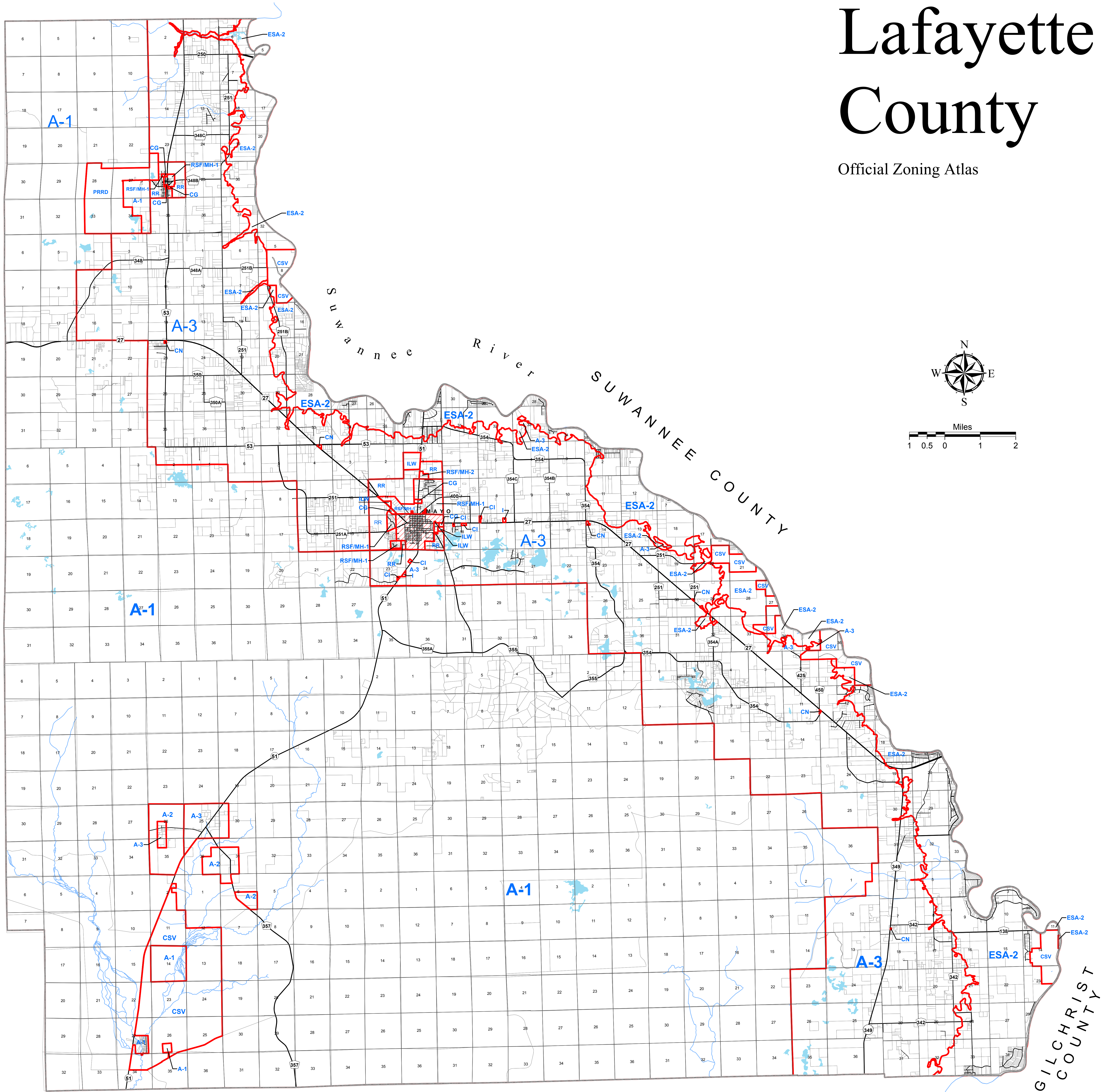


Lafayette County

Official Zoning Atlas



- Legend**
- Zoning Boundary
 - Incorporated Area
 - County Boundary Line
 - Lake
 - River or Stream
 - 27 U.S. Highway
 - 51 State Highway
 - 53 County Road

ZONING DISTRICTS

CSV	CONSERVATION
ESA-2	ENVIRONMENTALLY SENSITIVE AREAS
A-1,2,3	AGRICULTURAL
RE	RESIDENTIAL, ESTATE
RSF-1,2	RESIDENTIAL, (CONVENTIONAL) SINGLE FAMILY
RSF/MH-1,2	RESIDENTIAL, (MIXED) SINGLE FAMILY/MOBILE HOME
RMH-1,2	RESIDENTIAL, MOBILE HOME
RMH-P	RESIDENTIAL, MOBILE HOME PARK
RMF-1,2	RESIDENTIAL, MULTIPLE FAMILY
CN	COMMERCIAL, NEIGHBORHOOD
CG	COMMERCIAL, GENERAL
CI	COMMERCIAL, INTENSIVE
ILW	INDUSTRIAL, LIGHT AND WAREHOUSING
I	INDUSTRIAL
PRD	PLANNED RESIDENTIAL DEVELOPMENT
PRRD	PLANNED RURAL RESIDENTIAL DEVELOPMENT

ADOPTED MAY 22, 2000 BY ORDINANCE NO. 2000-5
 AMENDED JULY 28, 2003 BY ORDINANCE NO. 2003-04
 AMENDED AUGUST 22, 2005 BY ORDINANCE NO. 05-07
 AMENDED OCTOBER 9, 2006 BY ORDINANCE NO. 06-04
 AMENDED OCTOBER 8, 2007 BY ORDINANCE NO. 2007-07
 AMENDED JANUARY 28, 2008 BY ORDINANCE NO. 2008-02
 AMENDED MAY 12, 2008 BY ORDINANCE NOS. 08-04 AND 08-05
 AMENDED NOVEMBER 10, 2008 BY ORDINANCE NO. 08-09
 AMENDED DECEMBER 14, 2009 BY ORDINANCE NO. 2009-08
 AMENDED SEPTEMBER 27, 2010 BY ORDINANCE NO. 2010-02
 AMENDED NOVEMBER 22, 2010 BY ORDINANCE NO. 10-06
 AMENDED MAY 23, 2011 BY ORDINANCE NO. 11-01
 AMENDED MAY 13, 2013 BY ORDINANCE NO. 2013-02
 AMENDED JULY 28, 2014 BY ORDINANCE NO. 2014-04
 AMENDED AUGUST 22, 2016 BY ORDINANCE NO. 2016-02
 AMENDED MAY 22, 2017 BY ORDINANCE NO. 17-03

Note: Please refer to amendment ordinances for legal description of properties 10 acres or less in size and the corresponding zoning district for these properties.

