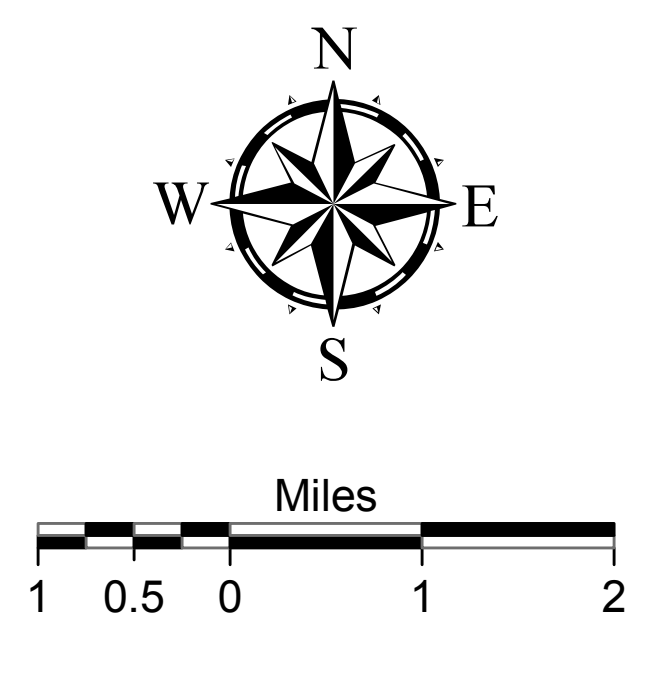
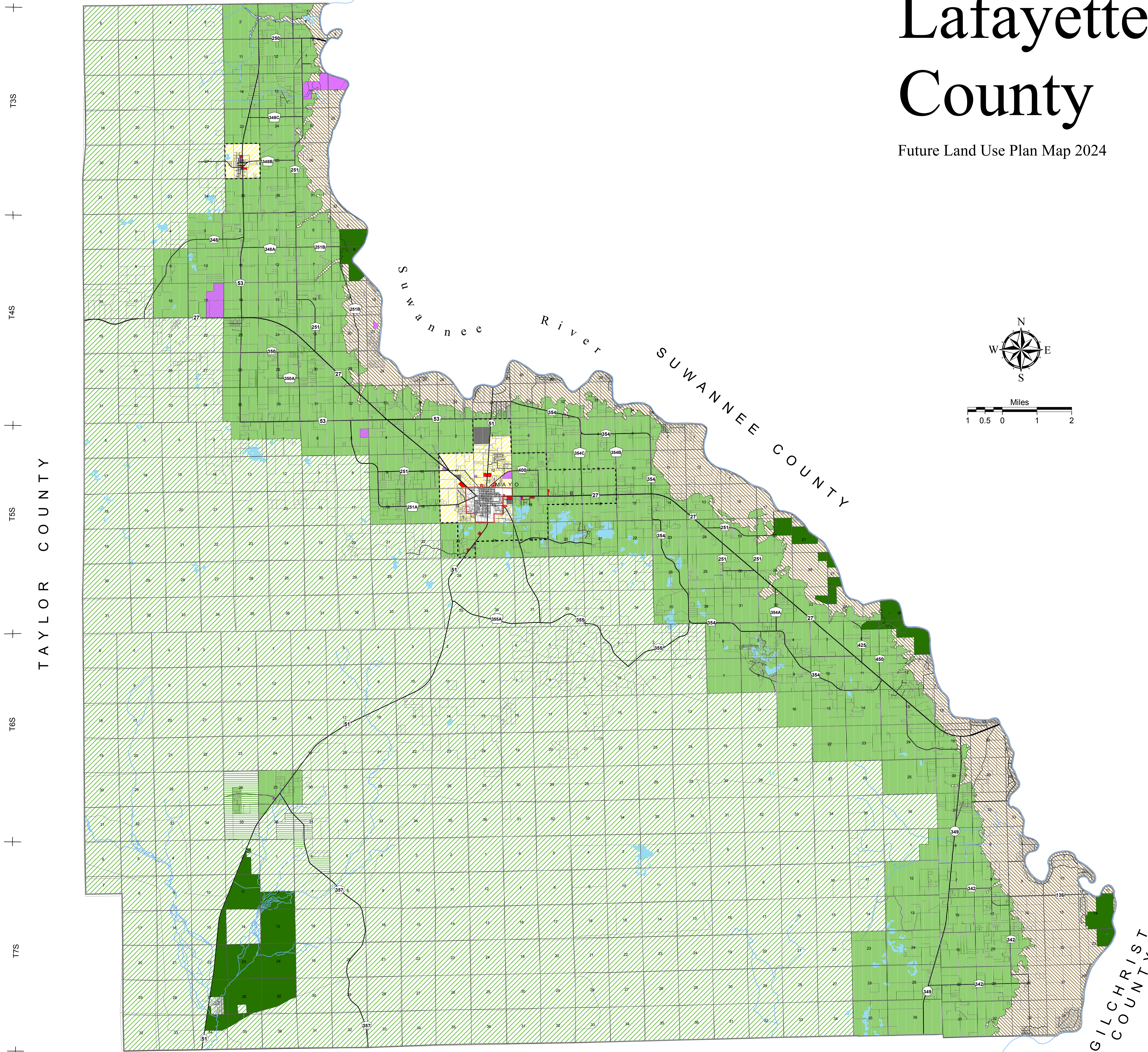


Lafayette County

Future Land Use Plan Map 2024



- FUTURE LAND USE PLAN MAP CLASSIFICATIONS**
- Conservation
 - Recreation
 - Public
 - Environmentally Sensitive Areas - 2 (≤ 1 d.u. per 10 acres)
 - Agriculture - 1 (≤ 1 d.u. per 40 acres)
 - Agriculture - 2 (≤ 1 d.u. per 10 acres)
 - Agriculture - 3 (≤ 1 d.u. per 5 acres)
 - Residential - Low Density (≤ 1 d.u. per acre)
 - Residential - Moderate Density (≤ 2 d.u. per acre)
 - Residential - Medium Density (≤ 8 d.u. per acre) none
 - Residential - High Density (≤ 20 d.u. per acre) none
 - Commercial
 - Industrial
- OTHER MAP FEATURES**
- County Boundary Line
 - Incorporated Area
 - Designated Urban Development Area
 - Lake
 - River or Stream
 - U.S. Highway
 - State Highway
 - County Road

ADOPTED AUGUST 12, 1991 BY ORDINANCE NO. 91-5
 AMENDED JANUARY 8, 1996 BY ORDINANCE NO. 96-01
 AMENDED JUNE 24, 1996 BY ORDINANCE NO. 96-6
 AMENDED JULY 22, 1996 BY ORDINANCE NOS. 96-9 AND 96-10
 AMENDED JUNE 23, 1997 BY ORDINANCE NOS. 97-2 AND 97-3
 AMENDED JULY 27, 1998 BY ORDINANCE NOS. 98-4 THROUGH 98-6
 AMENDED MAY 24, 1999 BY ORDINANCE NOS. 99-4 AND 99-5
 AMENDED JUNE 11, 2001 BY ORDINANCE NO. 2001-03
 AMENDED JANUARY 27, 2003 BY ORDINANCE NO. 2003-01
 AMENDED JULY 28, 2003 BY ORDINANCE NO. 2003-03
 AMENDED ON NOVEMBER 28, 2005 BY ORDINANCE NOS. 05-10 AND 05-11
 AMENDED OCTOBER 8, 2007 BY ORDINANCE NO. 2007-06
 AMENDED JANUARY 28, 2008 BY ORDINANCE NO. 2008-01
 AMENDED MAY 12, 2008 BY ORDINANCE NO. 2008-03
 AMENDED JUNE 22, 2009 BY ORDINANCE NO. 2009-05
 AMENDED DECEMBER 14, 2009 BY ORDINANCE NOS. 2009-07 AND 2009-09
 AMENDED SEPTEMBER 27, 2010 BY ORDINANCE NO. 2010-03
 AMENDED MAY 13, 2013 BY ORDINANCE NO. 2013-01
 AMENDED JULY 28, 2014 BY ORDINANCE NOS. 2014-02 AND 2014-3
 AMENDED AUGUST 22, 2016 BY ORDINANCE NO. 2016-03
 AMENDED MAY 22, 2017 BY ORDINANCE NO. 17-04

Note: Please refer to amendment ordinances for legal description of properties 10 acres or less in size and the corresponding land use classifications for these properties.

