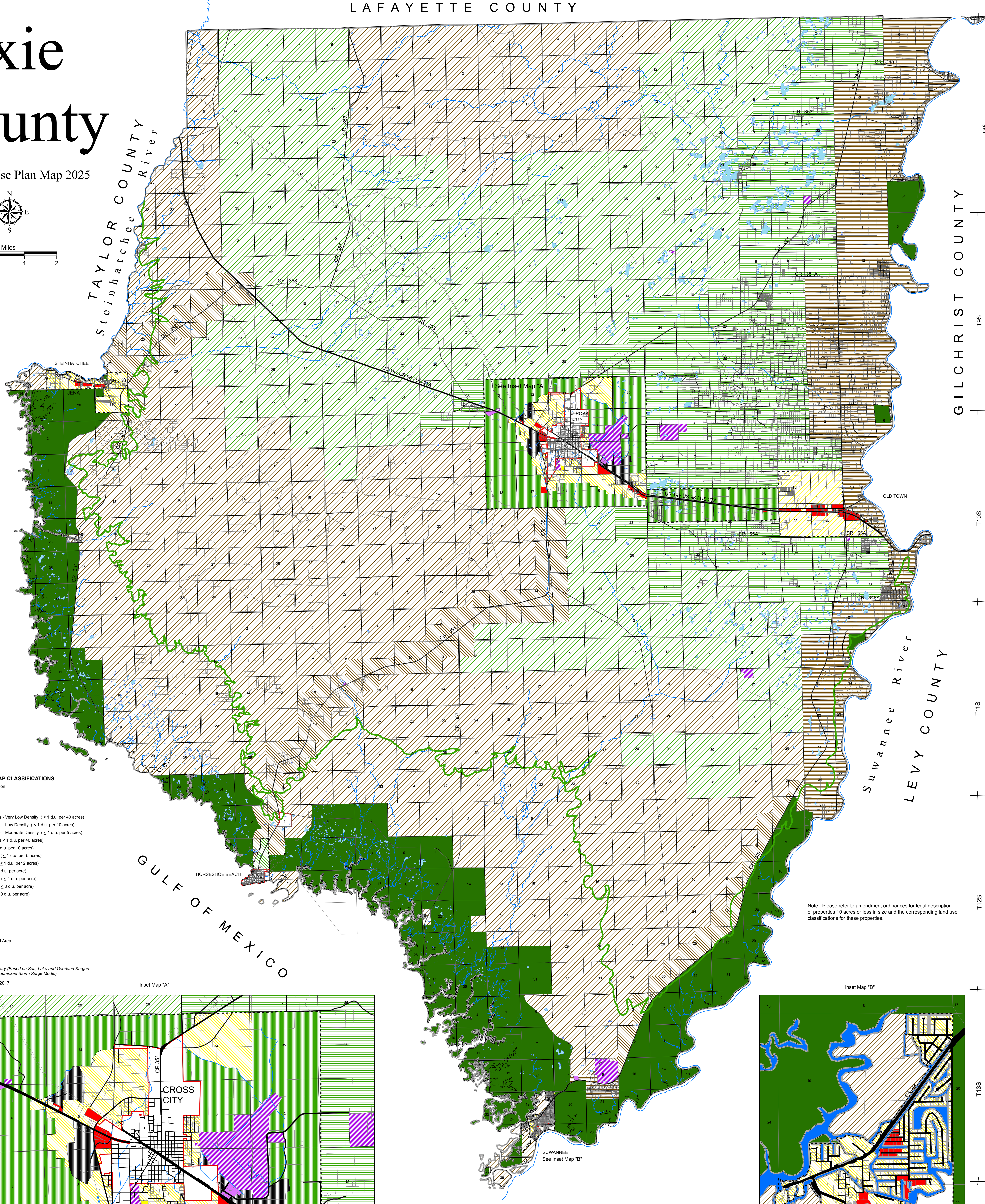
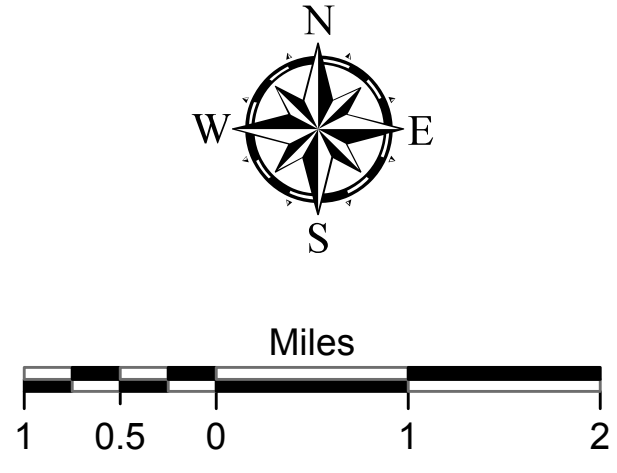


Dixie County

Future Land Use Plan Map 2025



FUTURE LAND USE PLAN MAP CLASSIFICATIONS

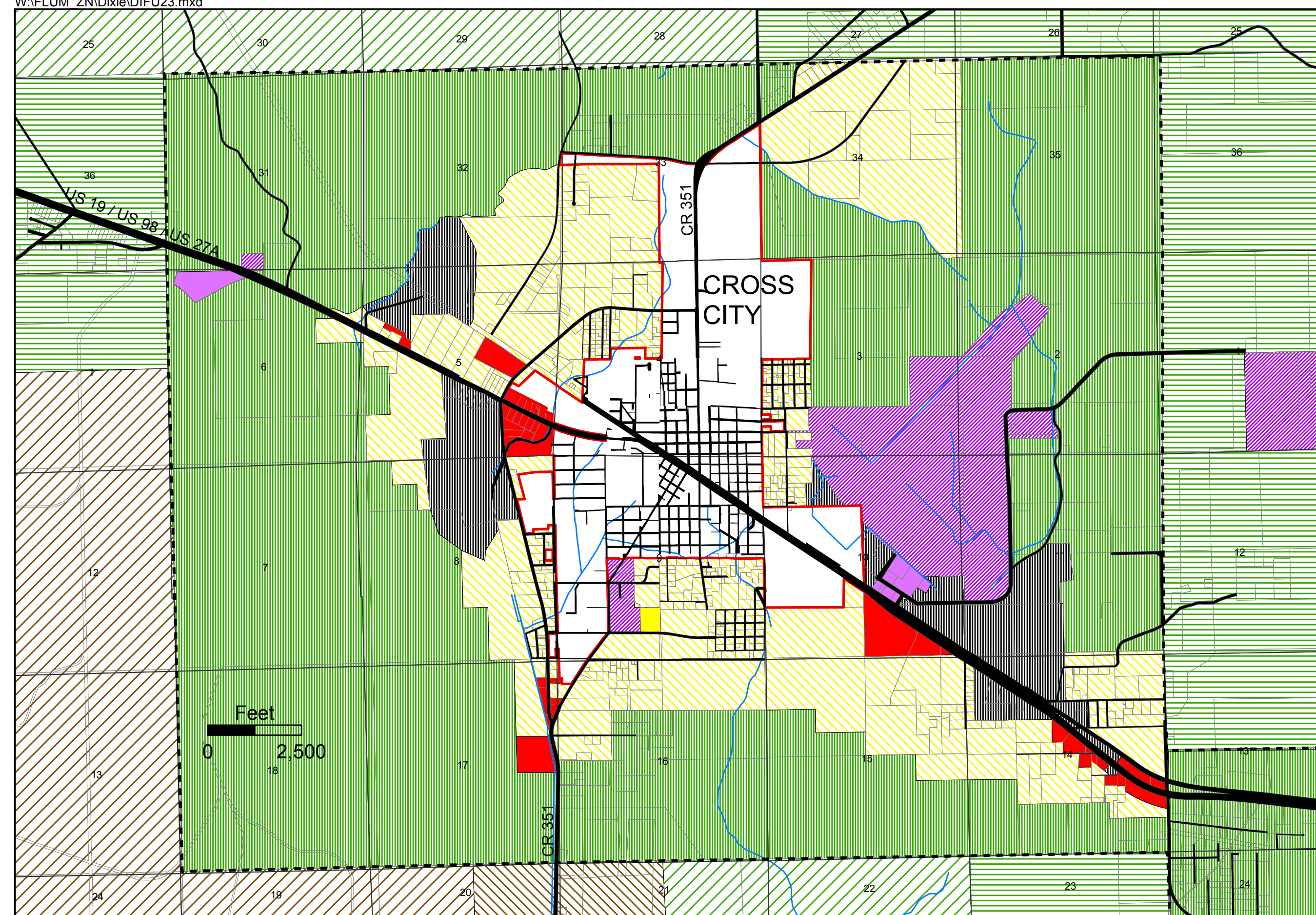
- No Future Land Use Classification
- Conservation
- Recreation
- Public
- Environmentally Sensitive Areas - Very Low Density (≤ 1 d.u. per 40 acres)
- Environmentally Sensitive Areas - Low Density (≤ 1 d.u. per 10 acres)
- Environmentally Sensitive Areas - Moderate Density (≤ 1 d.u. per 5 acres)
- Agriculture - Very Low Density (≤ 1 d.u. per 40 acres)
- Agriculture - Low Density (≤ 1 d.u. per 10 acres)
- Agriculture - Moderate Density (≤ 1 d.u. per 5 acres)
- Agriculture - Medium Density (≤ 1 d.u. per 2 acres)
- Residential - Low Density (≤ 2 d.u. per acre)
- Residential - Moderate Density (≤ 4 d.u. per acre)
- Residential - Medium Density (≤ 8 d.u. per acre)
- Residential - High Density (≤ 20 d.u. per acre)
- Commercial
- Industrial

OTHER MAP FEATURES

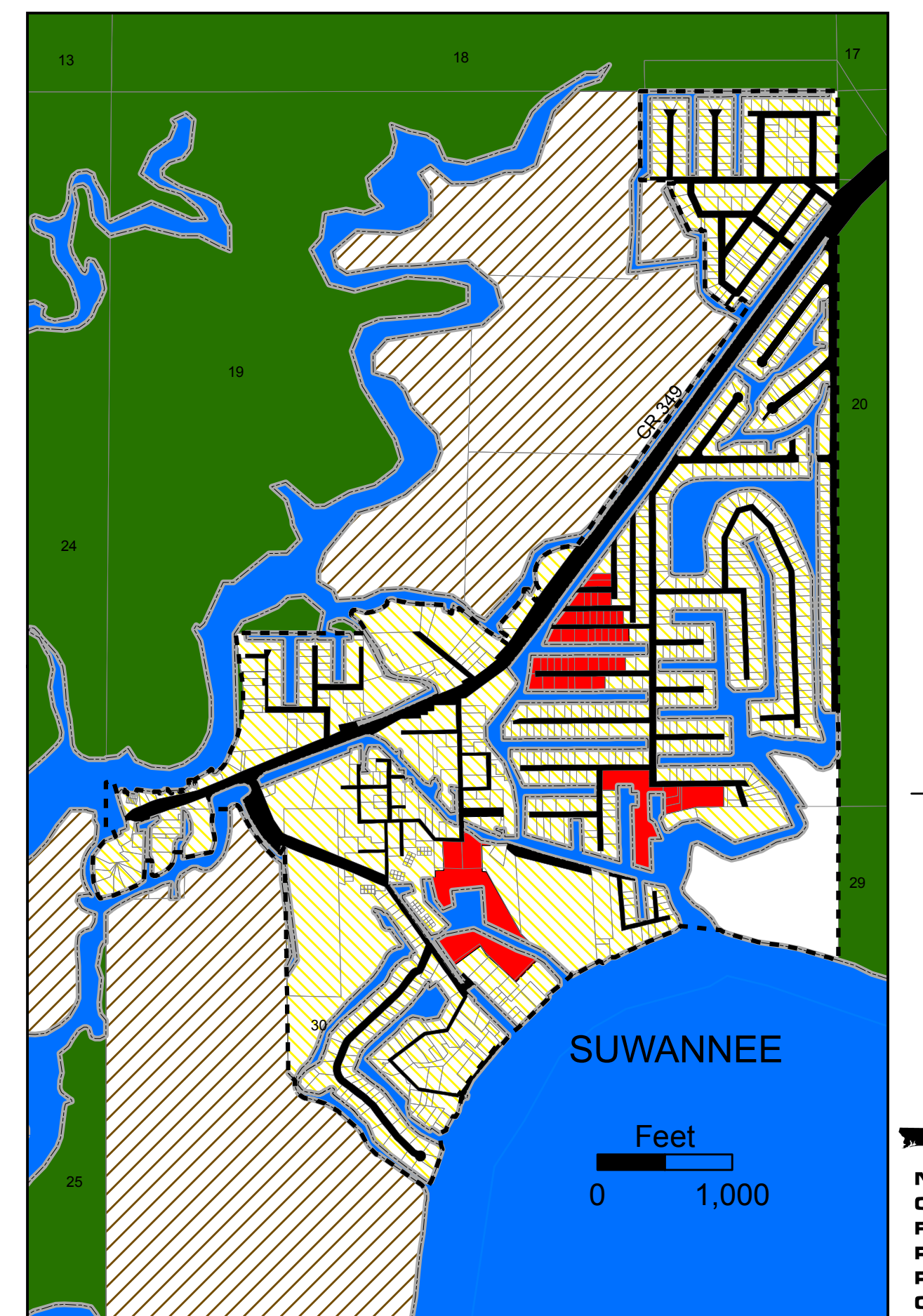
- County Boundary Line
- Incorporated Area
- Designated Urban Development Area
- Lake
- River or Stream
- Coastal High Hazard Area
- Category 1 Storm Surge Boundary (Based on Sea, Lake and Overland Surges from Hurricanes (SLOSH) Computerized Storm Surge Model)

Source: County Property Appraiser, 2017.

Inset Map "A"



Inset Map "B"



ADOPTED ON MARCH 15, 1990 BY ORDINANCE NO. 90-02
 AMENDED ON NOVEMBER 7, 1991 BY ORDINANCE NO. 91-06
 AMENDED ON DECEMBER 21, 1995 BY ORDINANCE NO. 95-14
 AMENDED ON NOVEMBER 7, 1996 BY ORDINANCE NO. 96-15
 AMENDED ON NOVEMBER 2, 2000 BY ORDINANCE NO. 2011-05
 AMENDED ON FEBRUARY 1, 2001 BY ORDINANCE NO. 01-02
 AMENDED ON AUGUST 16, 2001 BY ORDINANCE NO. 01-06
 AMENDED ON NOVEMBER 16, 2006 BY ORDINANCE NO. 06-05
 AMENDED ON SEPTEMBER 15, 2011 BY ORDINANCE NO. 2011-05
 AMENDED ON MAY 3, 2012 BY ORDINANCE NOS. 2012-02 AND 2012-03
 AMENDED ON APRIL 2, 2013 BY ORDINANCE NO. 2013-01
 AMENDED ON JUNE 5, 2014 BY ORDINANCE NO. 2014-07
 AMENDED ON JANUARY 15, 2015 BY ORDINANCE NO. 2015-02
 AMENDED ON APRIL 16, 2015 BY ORDINANCE NO. 2015-05

AMENDED ON MAY 5, 2016 BY ORDINANCE NO. 2016-05
 AMENDED ON MAY 19, 2016 BY ORDINANCE NO. 2016-07
 AMENDED ON JULY 21, 2016 BY ORDINANCE NO. 2016-10
 AMENDED ON JANUARY 19, 2017 BY ORDINANCE NO. 2017-01
 AMENDED ON JULY 6, 2017 BY ORDINANCE NO. 2017-12
 AMENDED ON AUGUST 17, 2017 BY ORDINANCE NO. 2017-17
 AMENDED ON FEBRUARY 15, 2018 BY ORDINANCE NO. 2018-02
 AMENDED ON APRIL 19, 2018 BY ORDINANCE NO. 2018-08
 AMENDED ON AUGUST 18, 2018 BY ORDINANCE NO. 2018-14
 AMENDED ON SEPTEMBER 25, 2018 BY ORDINANCE NO. 2018-17
 AMENDED ON NOVEMBER 15, 2018 BY ORDINANCE NO. 2018-21
 AMENDED ON JANUARY 17, 2019 BY ORDINANCE NO. 2019-01
 AMENDED ON JUNE 20, 2019 BY ORDINANCE NOS. 2019-06 AND 2019-08

Note: Please refer to amendment ordinances for legal description of properties 10 acres or less in size and the corresponding land use classifications for these properties.

